

HOTEL SITE FOR SALE

I-49 / 71 Highway & Y Highway



Hotel Site in the New Gateway Development
Y Highway & 71 Highway/Interstate 49, Belton, MO | A GREATER KANSAS CITY SUBURB



Estimated Population
68,620

Average Household Income
\$66,767

Five Mile Radius

- Prime Interstate visibility
- Join Academy Sports + Outdoors, Hobby Lobby, Menard's, Heartland Dental, Fazoli's, Dicky's BBQ, and Raising Cane's with more announcements coming soon
- Three acres available for sale

BLOCK & COMPANY, INC., Realtors 816.753.6000
In the Skelly Building on the Country Club Plaza
605 West 47th Street, Suite 200, Kansas City, Missouri 64112

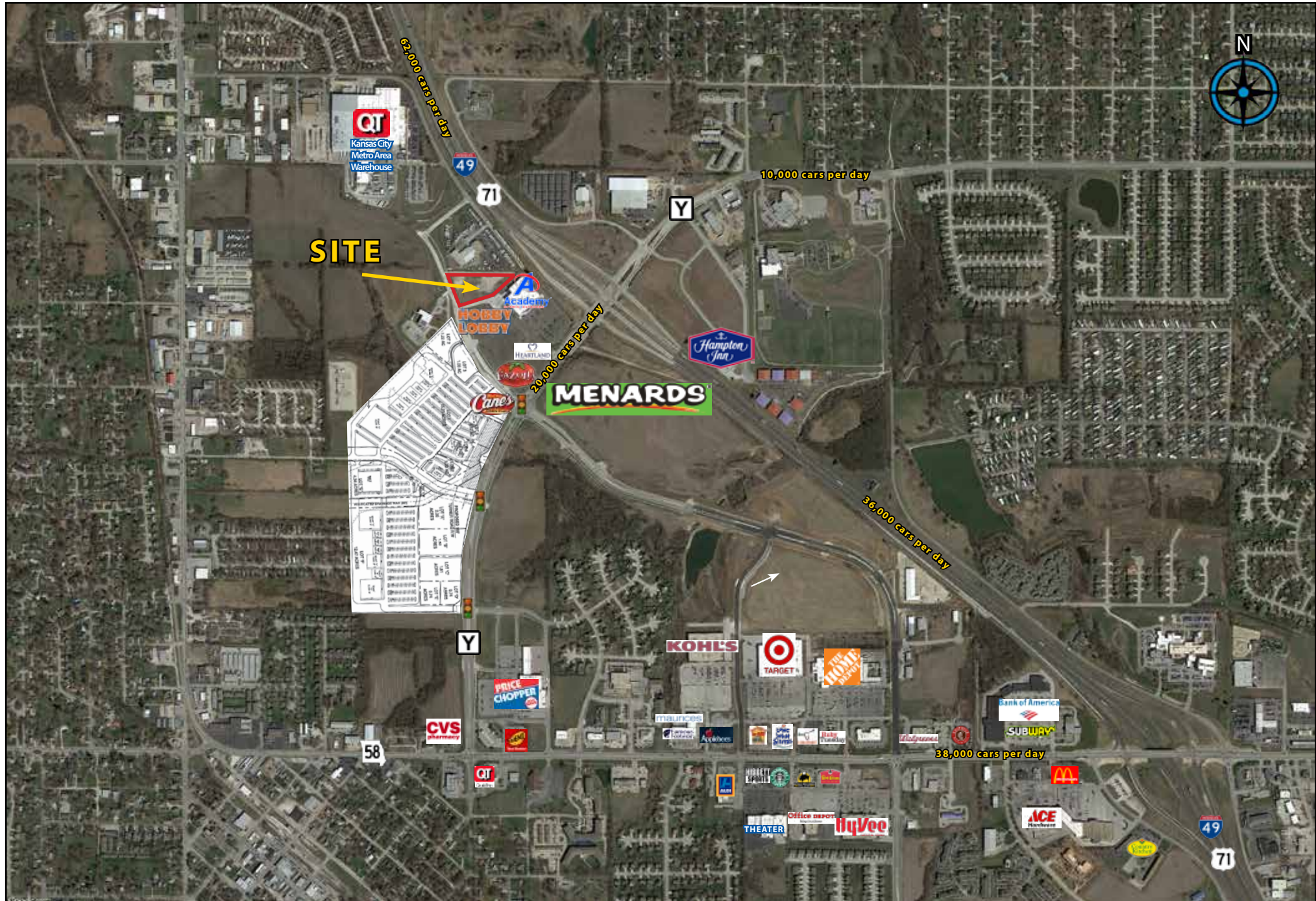
For Information Contact:

Max Kosoglad
816.412.7363
mkosoglad@blockandco.com

David Block
816.412.7400
dblock@blockandco.com

All information furnished regarding property for sale or lease is from sources deemed reliable, but no warranty or representation is made as to the accuracy thereof and the same is subject to errors, omissions, changes of prices, rental or other conditions, prior sale or lease or withdrawal without notice.

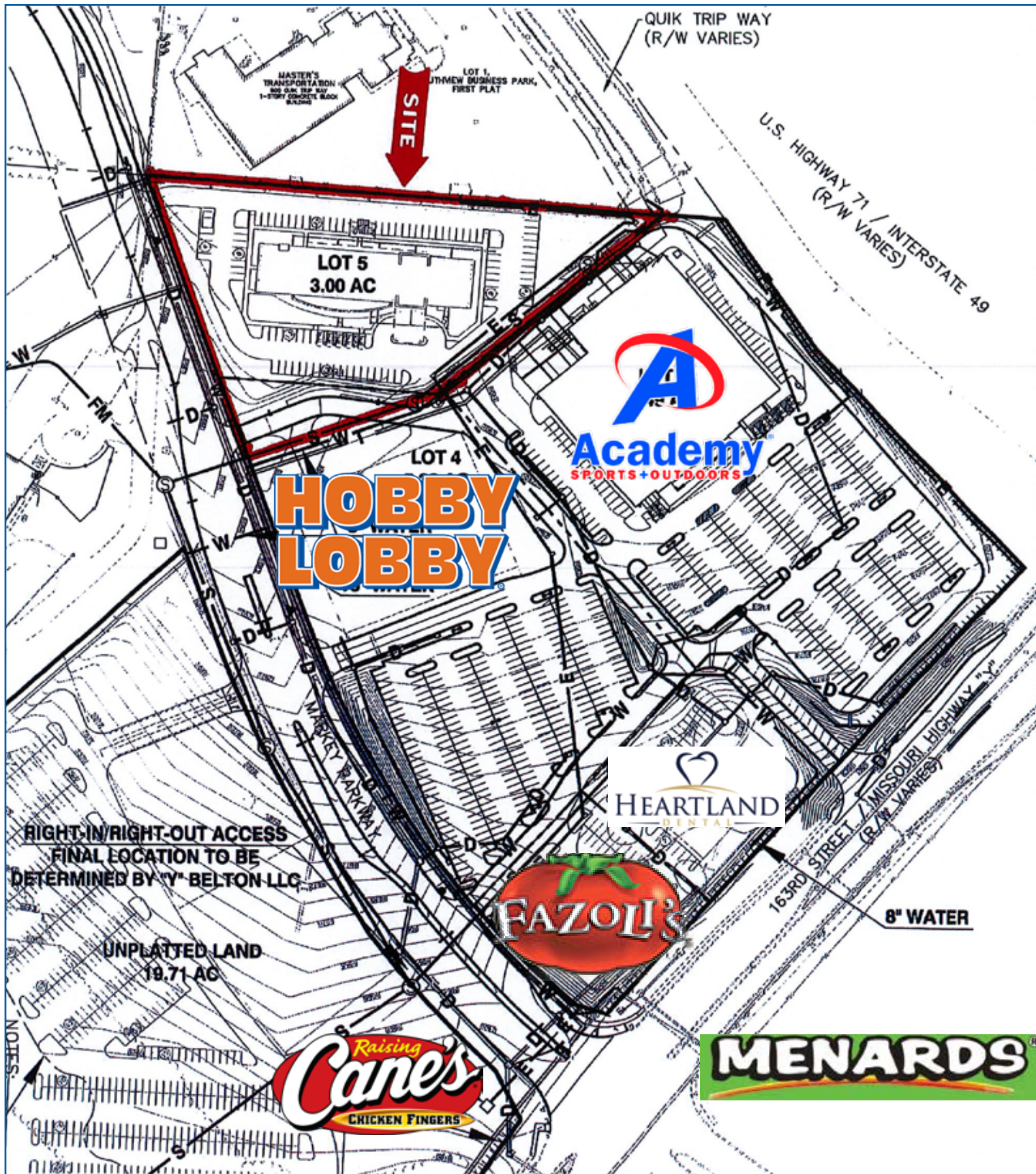
Belton Gateway Hotel Site

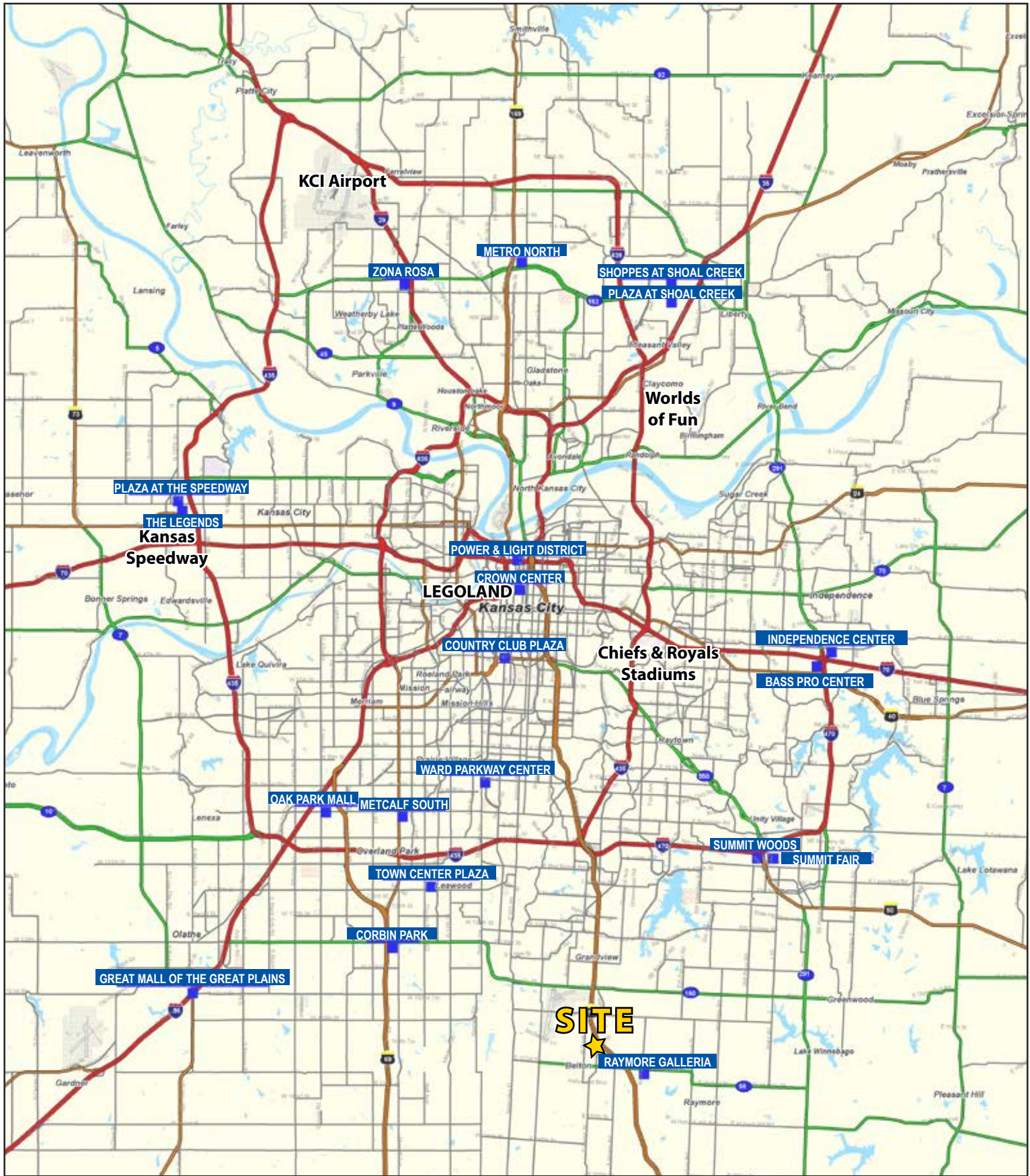


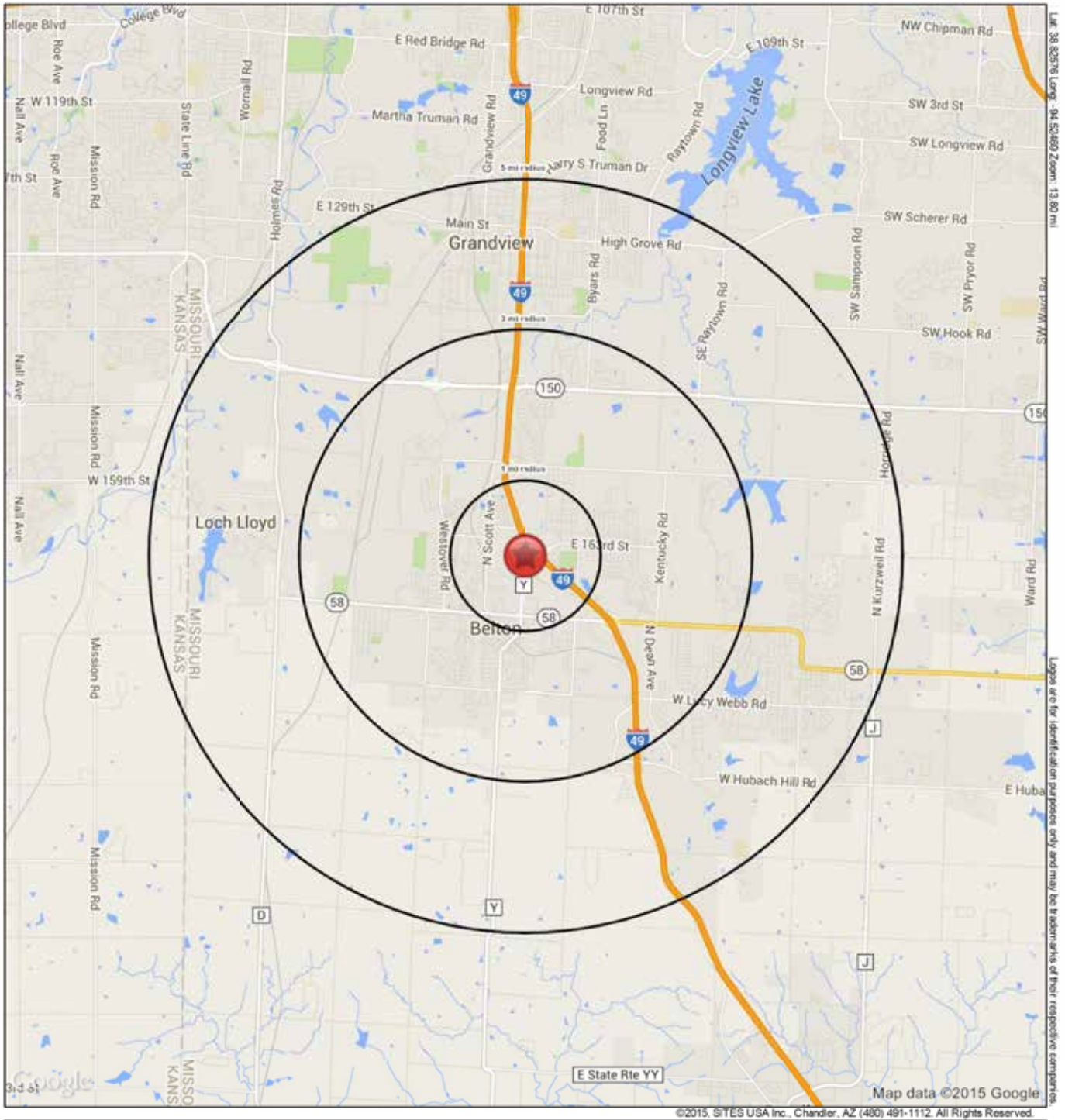
Belton Gateway Hotel Site



Belton Gateway Hotel Site Plan







Y Highway and 71 Highway / I-49 (NWQ)

Belton, MO 64012

August 2015

This map was produced using data from private and government sources deemed to be reliable. The information herein is provided without representation or warranty.

SUMMARY PROFILE

2000-2010 Census, 2015 Estimates with 2020 Projections

Calculated using Weighted Block Centroid from Block Groups

Lat/Lon: 38.8258/-94.5247

RS1

Y Highway and 71 Highway / I-49 (NWQ)

Belton, MO 64012

1 mi radius 3 mi radius 5 mi radius

POPULATION	2015 Estimated Population	5,637	35,228	68,620
	2020 Projected Population	5,702	35,913	69,855
	2010 Census Population	5,573	34,606	67,215
	2000 Census Population	5,779	29,241	57,652
	Projected Annual Growth 2015 to 2020	0.2%	0.4%	0.4%
	Historical Annual Growth 2000 to 2015	-0.2%	1.4%	1.3%
	2015 Median Age	34.8	34.5	36.1
HOUSEHOLDS	2015 Estimated Households	2,217	13,857	26,918
	2020 Projected Households	2,293	14,397	27,886
	2010 Census Households	2,101	13,067	25,396
	2000 Census Households	2,213	10,866	21,621
	Projected Annual Growth 2015 to 2020	0.7%	0.8%	0.7%
	Historical Annual Growth 2000 to 2015	-	1.8%	1.6%
RACE AND ETHNICITY	2015 Estimated White	82.2%	79.3%	75.1%
	2015 Estimated Black or African American	4.0%	12.2%	16.7%
	2015 Estimated Asian or Pacific Islander	1.4%	1.2%	1.2%
	2015 Estimated American Indian or Native Alaskan	0.9%	0.6%	0.5%
	2015 Estimated Other Races	11.5%	6.7%	6.5%
	2015 Estimated Hispanic	14.3%	7.8%	7.3%
INCOME	2015 Estimated Average Household Income	\$53,129	\$61,779	\$66,767
	2015 Estimated Median Household Income	\$49,937	\$54,777	\$57,916
	2015 Estimated Per Capita Income	\$20,895	\$24,359	\$26,249
EDUCATION (AGE 25+)	2015 Estimated Elementary (Grade Level 0 to 8)	2.3%	3.1%	3.7%
	2015 Estimated Some High School (Grade Level 9 to 11)	16.9%	10.6%	10.2%
	2015 Estimated High School Graduate	29.1%	27.6%	26.9%
	2015 Estimated Some College	23.1%	24.1%	23.4%
	2015 Estimated Associates Degree Only	7.6%	7.1%	7.5%
	2015 Estimated Bachelors Degree Only	11.6%	14.4%	14.7%
	2015 Estimated Graduate Degree	9.4%	13.2%	13.7%
BUSINESS	2015 Estimated Total Businesses	347	1,011	2,112
	2015 Estimated Total Employees	2,954	11,305	27,553
	2015 Estimated Employee Population per Business	8.5	11.2	13.0
	2015 Estimated Residential Population per Business	16.2	34.9	32.5

This report was produced using data from private and government sources deemed to be reliable. The information herein is provided without representation or warranty.