

FOR SALE OR LEASE

NEC of 350 Highway & Lane Avenue



Former Verizon Wireless

9000 E. 350 Highway, Raytown, MO. 64133



Estimated Population
127,866

Average Household Income
\$51,817

Five Mile Radius

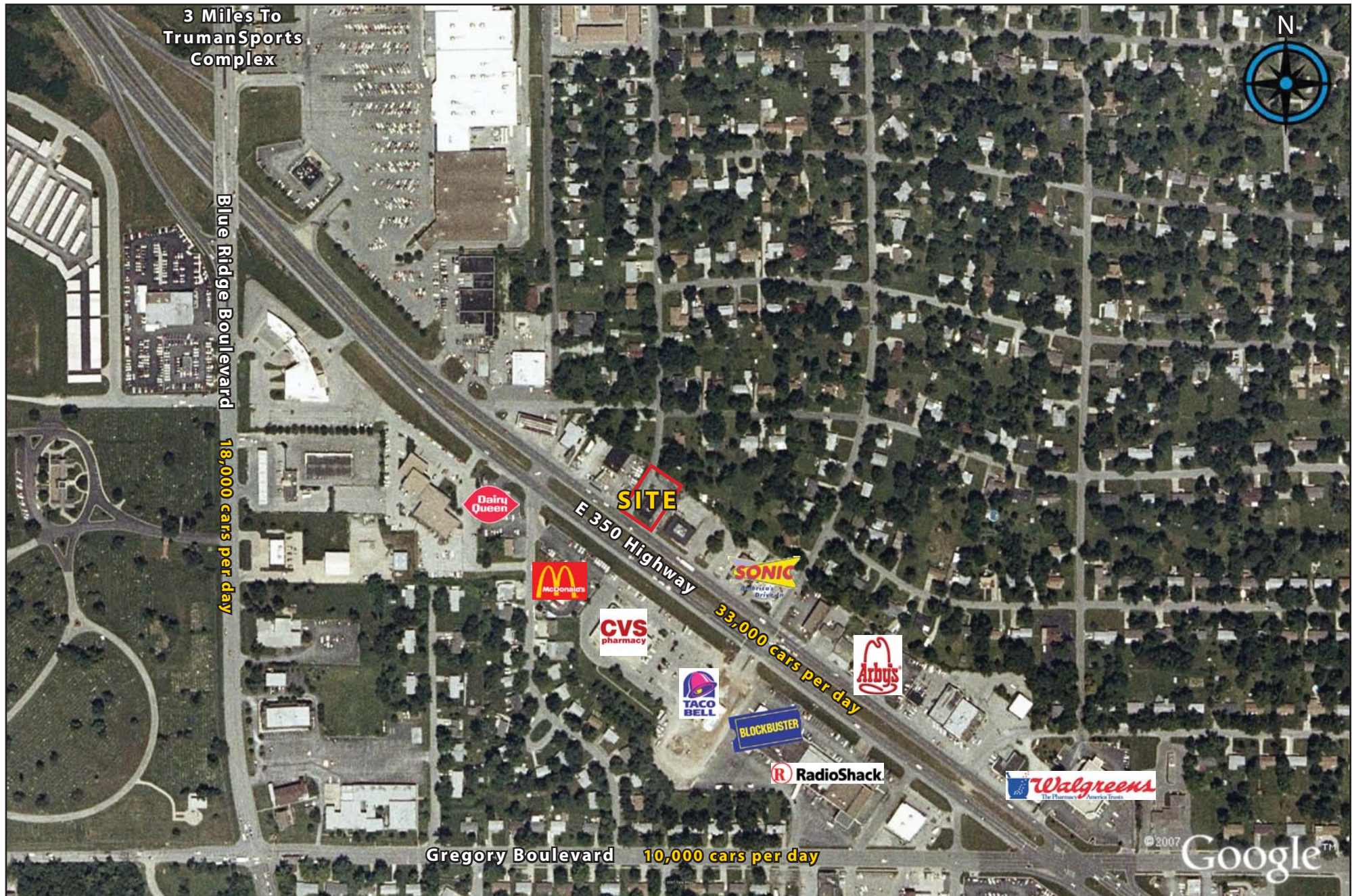
- 3,200+/- sq ft freestanding building
- 13,615+/- sq ft corner site (0.31 acre)
- Building fully renovated in 2008
- Retail display, office, and storage area
- Traffic counts over 33,000 cars per day
- Major retail corridor of Raytown, Missouri
- Highly visible with monument sign

BLOCK & COMPANY, INC., Realtors 816.753.6000
In the Skelly Building on the Country Club Plaza
605 West 47th Street, Suite 200, Kansas City, Missouri 64112

For Information Contact:

Bob Wallen
816.412.7371
bwallen@blockandco.com

9000 E 350 Highway, Raytown, Missouri



9000 E. 350 Highway, Raytown, Missouri



Lat: 38.9977 Lon: -94.478 Zoom: 11 mi Logos are for identification purposes only and may be trademarks of their respective companies.



©2013, SITES USA Inc., Chandler, AZ (480) 491-1112. All Rights Reserved.

9000 E. 350 Highway Raytown, Missouri

March 2013

This map was produced using data from private and government sources deemed to be reliable. The information herein is provided without representation or warranty.

SUMMARY DEMOGRAPHIC PROFILE

2000 - 2010 Census, 2011 Estimates & 2016 Projections

Calculated using Proportional Block Groups

Lat/Lon: 38.99765/-94.47801

March 2013

RS1

9000 E. 350 Highway Raytown, Missouri		1.00 mi radius	3.00 mi radius	5.00 mi radius
POPULATION	2011 Estimated Population	6,874	52,067	127,866
	2016 Projected Population	6,623	49,505	121,395
	2010 Census Population	6,950	52,858	129,705
	2000 Census Population	7,393	53,831	135,680
	Historical Annual Growth 2000 to 2011	-0.6%	-0.3%	-0.5%
	Projected Annual Growth 2011 to 2016	-0.7%	-1.0%	-1.0%
	2011 Median Age	37.0	35.6	35.2
HOUSEHOLDS	2011 Estimated Households	3,038	21,548	53,297
	2016 Projected Households	3,123	21,894	54,047
	2010 Census Households	3,022	21,469	53,231
	2000 Census Households	3,313	22,298	55,317
	Historical Annual Growth 2000 to 2011	-0.4%	-0.2%	-0.2%
	Projected Annual Growth 2011 to 2016	0.6%	0.3%	0.3%
POPULATION BY RACE	2011 Estimated White	66.7%	58.2%	45.9%
	2011 Estimated Black or African American	25.4%	34.1%	46.9%
	2011 Estimated Asian & Pacific Islander	1.3%	1.3%	1.1%
	2011 Estimated American Indian & Native Alaskan	0.5%	0.4%	0.4%
	2011 Estimated Other Races	6.1%	6.0%	5.6%
	2011 Estimated Hispanic	5.8%	5.8%	5.5%
INCOME	2011 Estimated Average Household Income	\$ 49,513	\$ 58,545	\$ 51,817
	2011 Estimated Median Household Income	\$ 44,204	\$ 51,132	\$ 45,004
	2011 Estimated Per Capita Income	\$ 22,024	\$ 24,625	\$ 21,874
EDUCATION (AGE 25+)	2011 Elementary	4.0%	3.2%	3.7%
	2011 Some High School	5.0%	6.8%	9.8%
	2011 High School Graduate	33.6%	33.9%	35.9%
	2011 Some College	24.5%	25.0%	23.3%
	2011 Associates Degree Only	8.4%	6.9%	5.9%
	2011 Bachelors Degree Only	16.5%	16.0%	14.0%
	2011 Graduate Degree	8.0%	8.3%	7.3%
BUSINESS	Number of Businesses	347	1,256	3,569
	Total Number of Employees	3,635	16,199	47,974
	Employee Population per Business	10.5	12.9	13.4
	Residential Population per Business	19.8	41.5	35.8

This report was produced using data from private and government sources deemed to be reliable. The information herein is provided without representation or warranty.