

# JOHNSON DRIVE RETAIL SPACE FOR LEASE

## Mission West Shopping Center



1,650 & 2,450 Sq Ft Available  
6500 Johnson Drive, Mission, Kansas



Estimated Population  
87,633

Average Household Income  
\$72,745

Three Mile Radius

- Join Hobby Lobby, Salsa Grill, Avelluto's Italian Restaurant, and the Kansas Drivers License Bureau
- Great signage on Johnson Drive
- Just seconds from Metcalf Avenue (69 Highway) and Shawnee Mission Parkway
- Near Hy-Vee, Target, and Mission Mall Redevelopment
- Intersection carries over 31,000 cars per day

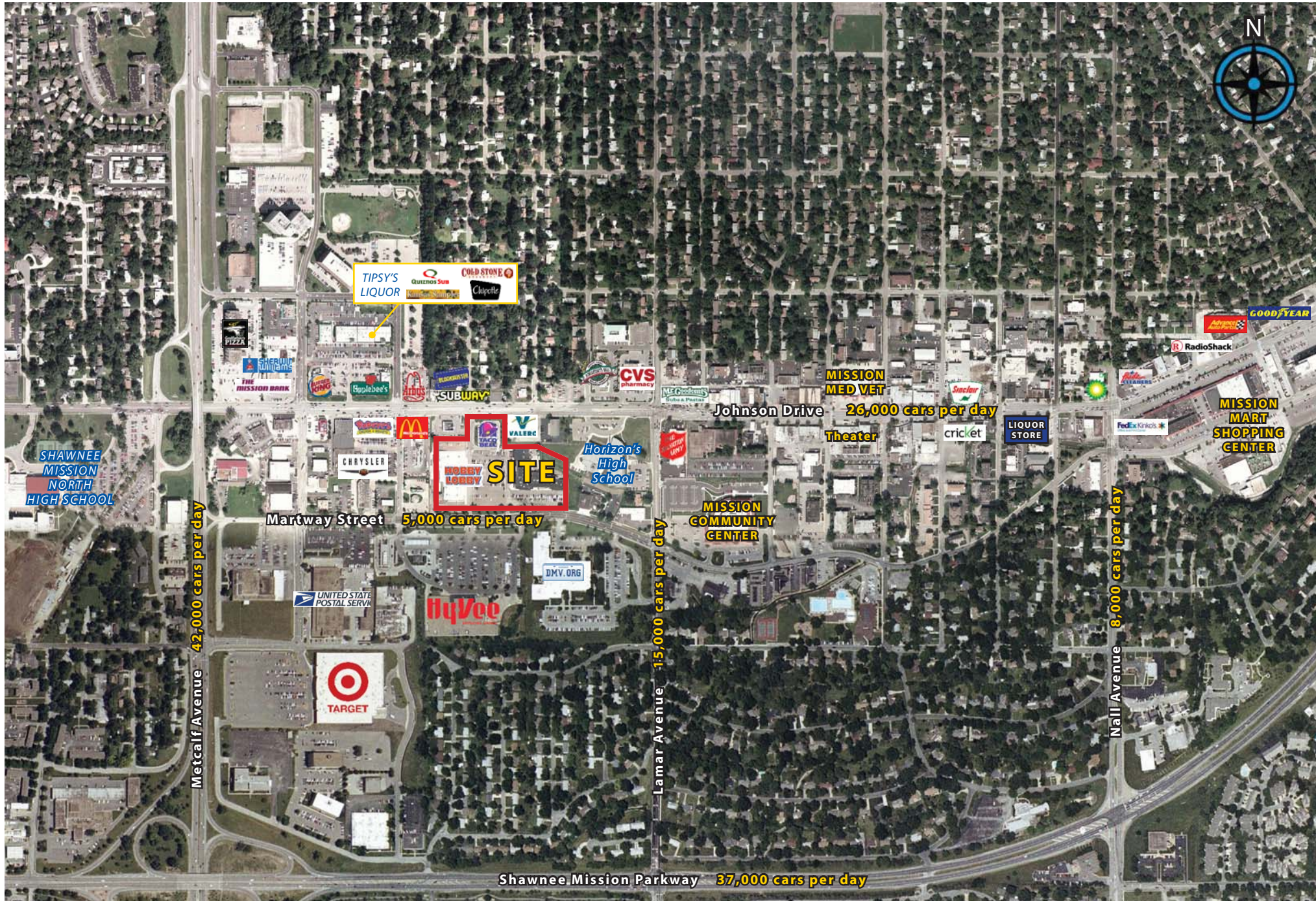
For Information Contact:

BLOCK & COMPANY, INC., Realtors 816.753.6000  
In the Skelly Building on the Country Club Plaza  
605 West 47th Street, Suite 200, Kansas City, Missouri 64112

**Darren Siegel**  
816.412.7377  
dsiegel@blockandco.com

**Phil Peck**  
816.412.7364  
ppeck@blockandco.com

# Mission West Shopping Center | 6500 Johnson Drive, Mission, Kansas



Mission West Shopping Center | 6500 Johnson Drive, Mission, Kansas



# Mission West Shopping Center | 6500 Johnson Drive, Mission, Kansas

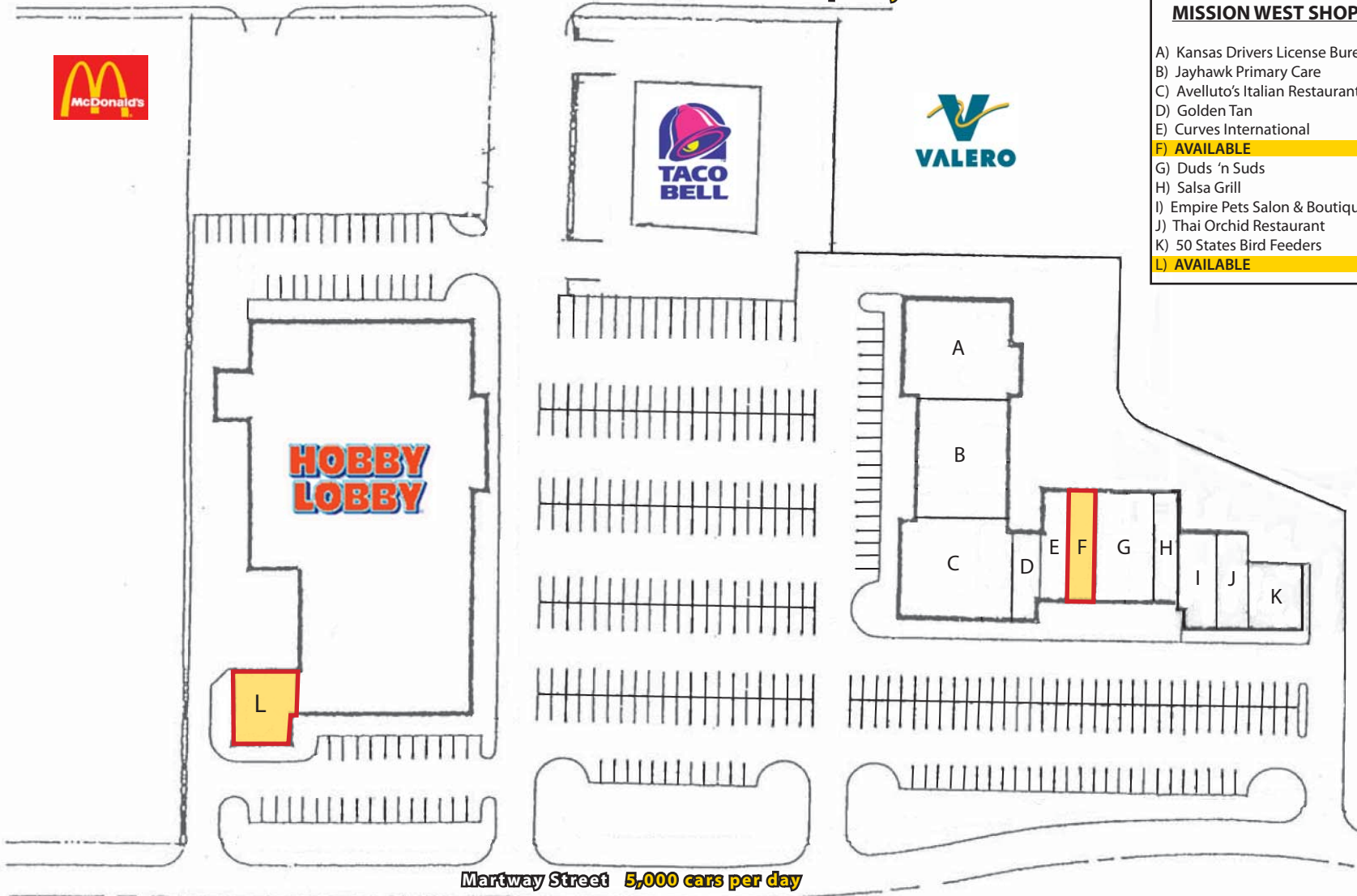


Johnson Drive 26,000 cars per day



## MISSION WEST SHOPPING CENTER

A) Kansas Drivers License Bureau	6,000 sf
B) Jayhawk Primary Care	5,600 sf
C) Avelluto's Italian Restaurant	4,050 sf
D) Golden Tan	1,300 sf
E) Curves International	1,300 sf
F) AVAILABLE	1,650 sf
G) Duds 'n Suds	3,200 sf
H) Salsa Grill	3,200 sf
I) Empire Pets Salon & Boutique	1,750 sf
J) Thai Orchid Restaurant	1,750 sf
K) 50 States Bird Feeders	2,000 sf
L) AVAILABLE	2,450 sf



Martway Street 5,000 cars per day



Lat: 39.0225 Lon: -94.6611 Zoom: 11 mi Logos are for identification purposes only and may be trademarks of their respective companies.



©2010, SITES USA Inc., Chandler, AZ (480) 491-1112. All Rights Reserved.

## 6500 Johnson Drive Mission, Kansas

May 2010

This map was produced using data from private and government sources deemed to be reliable. The information herein is provided without representation or warranty.



# SUMMARY DEMOGRAPHIC PROFILE

1990 - 2000 Census, 2009 Estimates & 2014 Projections

Calculated using Proportional Block Groups

Lat/Lon: 39.022462/-94.661124

May 2010

RS1

6500 Johnson Drive Mission, Kansas		1.00 mi radius	3.00 mi radius	5.00 mi radius
<b>POPULATION</b>	2009 Estimated Population	10,728	87,633	241,706
	2014 Projected Population	10,676	87,858	240,959
	2000 Census Population	11,101	91,575	252,774
	1990 Census Population	11,328	95,069	261,946
	Historical Annual Growth 1990 to 2009	-0.3%	-0.4%	-0.4%
	Projected Annual Growth 2009 to 2014	-0.1%	0.1%	-0.1%
	2009 Median Age	39.0	38.3	38.1
<b>HOUSEHOLDS</b>	2009 Estimated Households	4,943	37,391	106,055
	2014 Projected Households	4,520	35,277	102,248
	2000 Census Households	5,319	40,291	113,098
	1990 Census Households	5,308	40,328	113,959
	Historical Annual Growth 1990 to 2009	-0.4%	-0.4%	-0.4%
	Projected Annual Growth 2009 to 2014	-1.7%	-1.1%	-0.7%
<b>POPULATION BY RACE</b>	2009 Estimated White	83.5%	84.4%	81.5%
	2009 Estimated Black or African American	6.3%	5.6%	8.0%
	2009 Estimated Asian & Pacific Islander	2.2%	2.3%	2.7%
	2009 Estimated American Indian & Native Alaskan	0.7%	0.7%	0.6%
	2009 Estimated Other Races	7.2%	7.0%	7.2%
	2009 Estimated Hispanic	9.4%	11.3%	12.7%
<b>INCOME</b>	2009 Estimated Average Household Income	\$ 62,996	\$ 72,745	\$ 69,053
	2009 Estimated Median Household Income	\$ 58,849	\$ 69,567	\$ 64,200
	2009 Estimated Per Capita Income	\$ 29,932	\$ 31,512	\$ 30,698
<b>EDUCATION (AGE 25+)</b>	2009 Elementary	1.3%	1.8%	2.1%
	2009 Some High School	2.5%	3.9%	4.3%
	2009 High School Graduate	22.9%	22.9%	21.7%
	2009 Some College	21.6%	20.5%	20.6%
	2009 Associates Degree Only	7.1%	7.4%	7.1%
	2009 Bachelors Degree Only	30.7%	29.2%	28.8%
	2009 Graduate Degree	13.9%	14.4%	15.5%
<b>BUSINESS</b>	Number of Businesses	974	4,050	13,505
	Total Number of Employees	15,051	57,654	188,723
	Employee Population per Business	15.4	14.2	14.0
	Residential Population per Business	11.0	21.6	17.9

This report was produced using data from private and government sources deemed to be reliable. The information herein is provided without representation or warranty.