

AVAILABLE
For Sale or For Lease



7,850 +/- Sq Ft Office / Warehouse Building
821 Commerce Drive, Lee's Summit, Missouri



Estimated Population
85,734

Average Household Income
\$78,458

Five Mile Radius

- 2,500 +/- sq ft office and 5,350 +/- sq ft warehouse
- Drive-in and dock high doors
- Located northeast of Chipman Road & Commerce Drive
- Chipman Road carries over 14,000 cars per day

BLOCK & COMPANY, INC., Realtors
4963 NE Goodview Circle, Suite C
Lee's Summit, Missouri 64064

816.753.6000

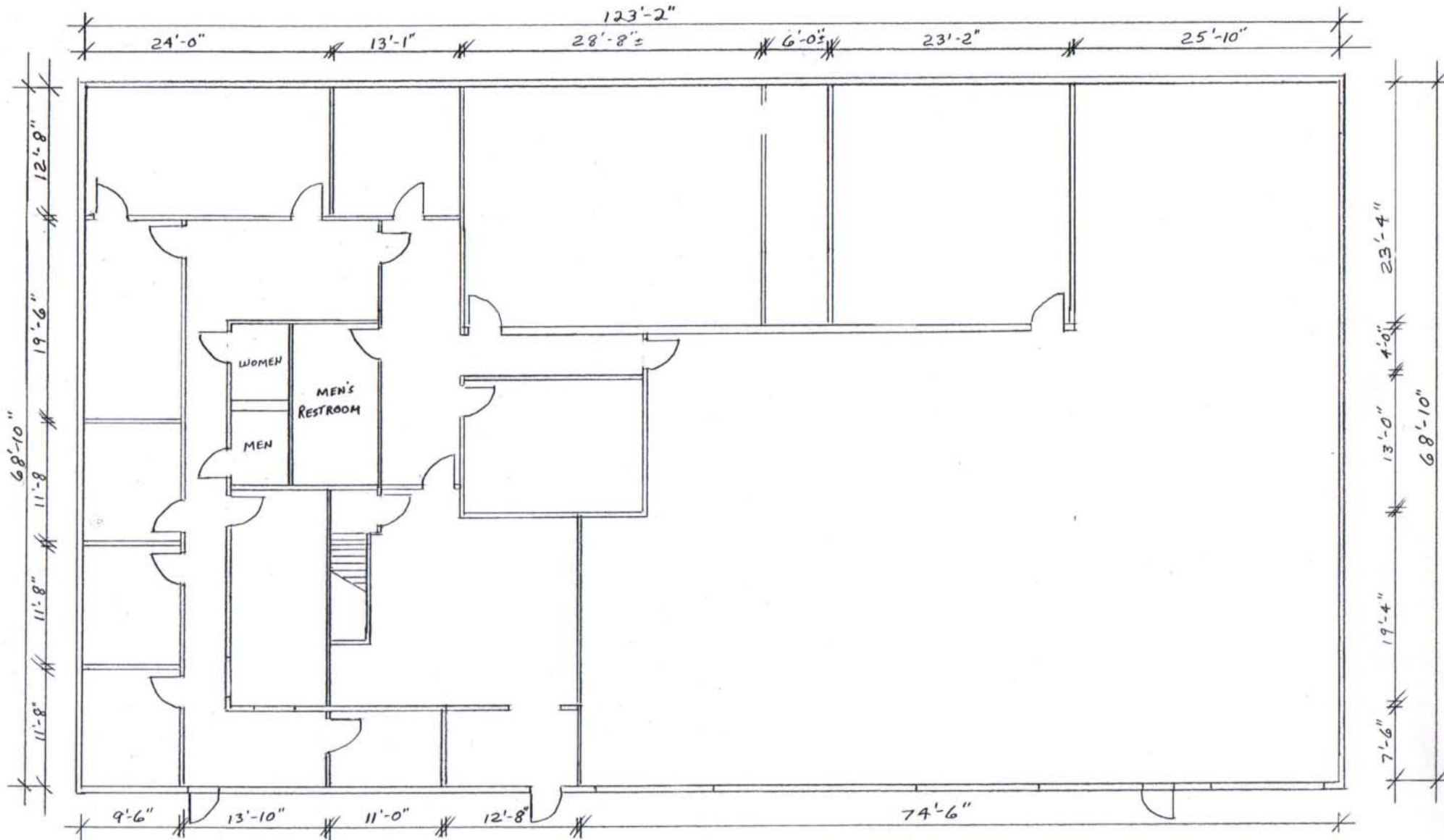
For Information Contact:

William Glasgow
816.412.7210
wglasgow@blockandco.com

821 Commerce Drive, Lee's Summit, Missouri



821 Commerce Drive, Lee's Summit, Missouri



Lat: 38.9297 Lon: -94.3871 Zoom: 11 mi Logos are for identification purposes only and may be trademarks of their respective companies.



©2009, SITES USA Inc., Chandler, AZ (480) 491-1112. All Rights Reserved.

821 Commerce Drive Lees Summit, Missouri

March 2009

This map was produced using data from private and government sources deemed to be reliable. The information herein is provided without representation or warranty.



SUMMARY DEMOGRAPHIC PROFILE

1990 - 2000 Census, 2009 Estimates & 2014 Projections

Calculated using Proportional Block Groups

Lat/Lon: 38.92793/-94.385188

December 2010

RS1

821 Commerce Drive Lee's Summit, Missouri		1.00 mi radius	3.00 mi radius	5.00 mi radius
POPULATION	2009 Estimated Population	5,929	49,979	85,734
	2014 Projected Population	7,307	53,109	91,549
	2000 Census Population	5,577	45,704	72,780
	1990 Census Population	5,010	36,038	52,991
	Historical Annual Growth 1990 to 2009	1.0%	2.0%	3.3%
	Projected Annual Growth 2009 to 2014	4.7%	1.3%	1.4%
	2009 Median Age	34.5	37.8	37.6
HOUSEHOLDS	2009 Estimated Households	2,575	19,569	32,102
	2014 Projected Households	3,301	20,980	34,465
	2000 Census Households	2,377	17,948	27,507
	1990 Census Households	2,078	14,151	20,132
	Historical Annual Growth 1990 to 2009	1.3%	2.0%	3.1%
Projected Annual Growth 2009 to 2014	5.6%	1.4%	1.5%	
POPULATION BY RACE	2009 Estimated White	91.8%	91.9%	90.1%
	2009 Estimated Black or African American	4.1%	4.6%	6.3%
	2009 Estimated Asian & Pacific Islander	0.9%	1.0%	1.1%
	2009 Estimated American Indian & Native Alaskan	0.5%	0.3%	0.3%
	2009 Estimated Other Races	2.6%	2.3%	2.2%
	2009 Estimated Hispanic	5.5%	5.6%	5.5%
INCOME	2009 Estimated Average Household Income	\$ 54,331	\$ 67,482	\$ 78,458
	2009 Estimated Median Household Income	\$ 55,466	\$ 70,921	\$ 80,007
	2009 Estimated Per Capita Income	\$ 23,623	\$ 26,673	\$ 29,625
EDUCATION (AGE 25+)	2009 Elementary	1.9%	1.5%	1.3%
	2009 Some High School	5.4%	4.7%	4.2%
	2009 High School Graduate	29.5%	24.6%	23.9%
	2009 Some College	25.4%	24.5%	23.7%
	2009 Associates Degree Only	9.0%	8.5%	8.4%
	2009 Bachelors Degree Only	19.8%	23.5%	24.5%
	2009 Graduate Degree	9.1%	12.7%	14.0%
BUSINESS	Number of Businesses	465	2,267	3,043
	Total Number of Employees	6,157	30,089	38,857
	Employee Population per Business	13.2	13.3	12.8
	Residential Population per Business	12.7	22.0	28.2

This report was produced using data from private and government sources deemed to be reliable. The information herein is provided without representation or warranty.