

JR'S RESTAURANT FOR SALE

NEC 152 Highway & N. Oak Trafficway



4,942 Sq Ft Freestanding Restaurant | **CONFIDENTIAL**
9321 N. Oak Trafficway, Kansas City, Missouri



Estimated Population
107,556

Average Household Income
\$71,949

Five Mile Radius

- Excellent Northland location off 152 Highway
- Turn-key 4,942 sq ft restaurant and bar
- Includes all fixtures, furniture, and equipment
- 1,000 sq ft outdoor patio
- 152 Highway & N. Oak Trafficway carries over 45,000 cars per day

BLOCK & COMPANY, INC., Realtors 816.753.6000
In the Skelly Building on the Country Club Plaza
605 West 47th Street, Suite 200, Kansas City, Missouri 64112

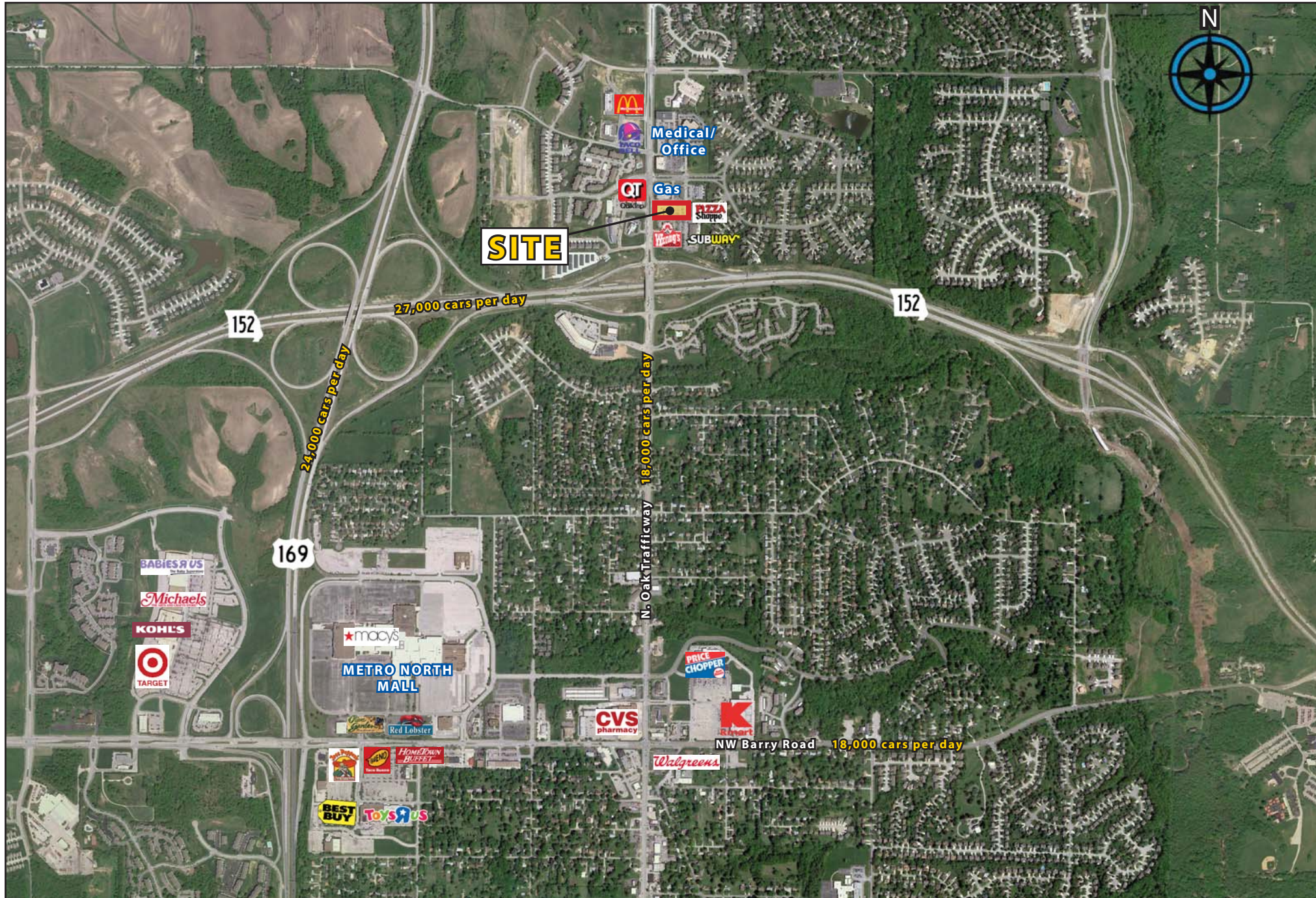
For Information Contact:

Jody Minder
816.412.7358
jminder@blockandco.com

David Block
816.412.7400
dblock@blockandco.com

All information furnished regarding property for sale or lease is from sources deemed reliable, but no warranty or representation is made as to the accuracy thereof and the same is subject to errors, omissions, changes of prices, rental or other conditions, prior sale or lease or withdrawal without notice.

9321 N. Oak Trafficway, Kansas City, Missouri



9321 N. Oak Trafficway, Kansas City, Missouri



9321 N. Oak Trafficway, Kansas City, Missouri





Lat: 39.2632 Lon: -94.575 Zoom: 11.01 mi Logos are for identification purposes only and may be trademarks of their respective companies.

©2010, SITES USA Inc., Chandler, AZ (480) 491-1112. All Rights Reserved.

9321 N. Oak Trafficway Kansas City, Missouri

July 2010

This map was produced using data from private and government sources deemed to be reliable. The information herein is provided without representation or warranty.

SUMMARY DEMOGRAPHIC PROFILE

1990 - 2000 Census, 2009 Estimates & 2014 Projections

Calculated using Proportional Block Groups

Lat/Lon: 39.263211/-94.575011

July 2010

RS1

9321 N. Oak Trafficway Kansas City, Missouri		1.00 mi radius	3.00 mi radius	5.00 mi radius
POPULATION	2009 Estimated Population	5,857	43,535	107,556
	2014 Projected Population	7,496	49,992	122,226
	2000 Census Population	4,440	33,217	84,491
	1990 Census Population	3,727	25,609	68,155
	Historical Annual Growth 1990 to 2009	3.0%	3.7%	3.0%
	Projected Annual Growth 2009 to 2014	5.6%	3.0%	2.7%
	2009 Median Age	37.2	37.3	36.7
HOUSEHOLDS	2009 Estimated Households	2,065	16,130	40,493
	2014 Projected Households	2,559	17,637	42,966
	2000 Census Households	1,652	13,035	34,484
	1990 Census Households	1,317	9,450	26,669
	Historical Annual Growth 1990 to 2009	3.0%	3.7%	2.7%
	Projected Annual Growth 2009 to 2014	4.8%	1.9%	1.2%
POPULATION BY RACE	2009 Estimated White	90.0%	89.4%	87.8%
	2009 Estimated Black or African American	2.2%	2.6%	3.4%
	2009 Estimated Asian & Pacific Islander	0.8%	0.9%	1.5%
	2009 Estimated American Indian & Native Alaskan	0.7%	0.7%	0.7%
	2009 Estimated Other Races	6.2%	6.3%	6.6%
	2009 Estimated Hispanic	6.5%	5.7%	5.9%
INCOME	2009 Estimated Average Household Income	\$ 74,382	\$ 73,493	\$ 71,949
	2009 Estimated Median Household Income	\$ 77,954	\$ 71,311	\$ 69,052
	2009 Estimated Per Capita Income	\$ 26,345	\$ 27,405	\$ 27,298
EDUCATION (AGE 25+)	2009 Elementary	0.7%	1.3%	1.2%
	2009 Some High School	4.3%	4.7%	4.3%
	2009 High School Graduate	28.0%	27.5%	27.4%
	2009 Some College	23.7%	22.9%	22.6%
	2009 Associates Degree Only	8.8%	9.7%	9.2%
	2009 Bachelors Degree Only	25.0%	24.2%	24.2%
	2009 Graduate Degree	9.5%	9.8%	11.1%
BUSINESS	Number of Businesses	120	999	2,688
	Total Number of Employees	1,679	12,592	34,981
	Employee Population per Business	14.0	12.6	13.0
	Residential Population per Business	48.7	43.6	40.0

This report was produced using data from private and government sources deemed to be reliable. The information herein is provided without representation or warranty.