

RUSKIN HEIGHTS SHOPPING CENTER

Retail Space For Lease



1,088 & 5,400 Sq Ft Available
Red Bridge Road & Blue Ridge Boulevard (SWC), Kansas City, Missouri



Estimated Population
123,242

Average Household Income
\$62,508

Five Mile Radius

- Pylon sign
- Join co-tenants like Dollar General, Title Max, US Post Office, Cash America Pawn, and more
- Excellent visibility and access to Blue Ridge
- Across from Ruskin High School and Stadium, located near 71 Highway
- Center faces Blue Ridge Blvd which carries over 11,600 cars per day
- Minutes from I-435, 71 Highway, and Bannister area

BLOCK & COMPANY, INC., Realtors 816.753.6000
In the Skelly Building on the Country Club Plaza
605 West 47th Street, Suite 200, Kansas City, Missouri 64112

For Information Contact:

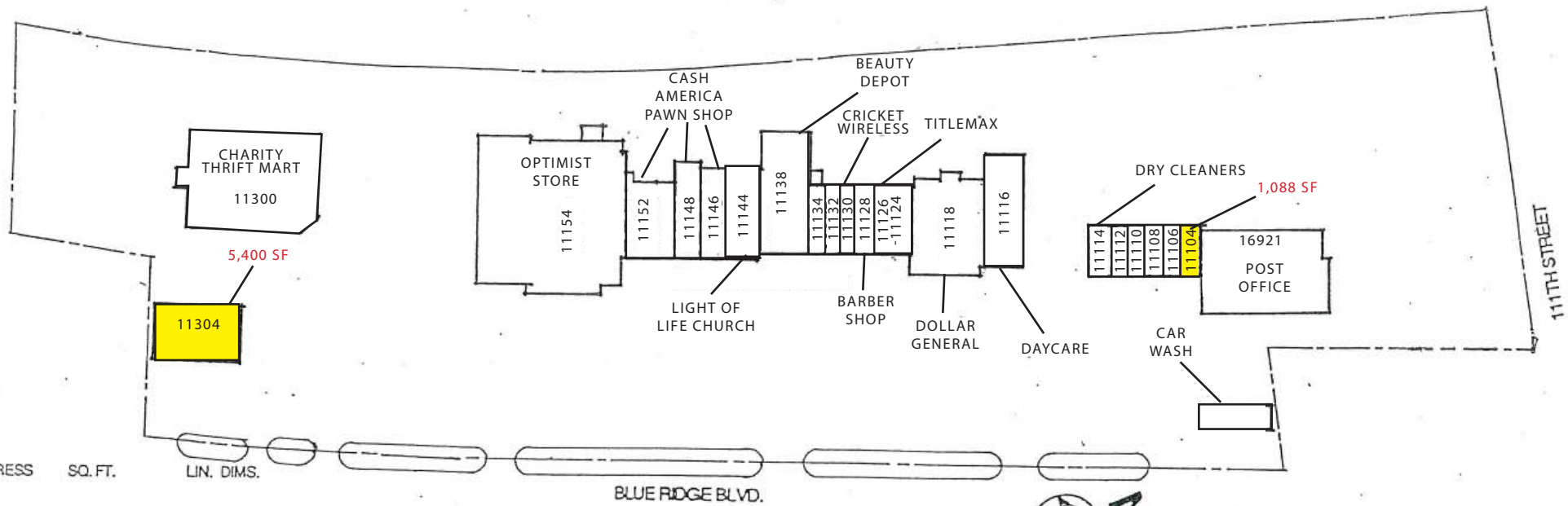
Darren Siegel
816.412.7377
dsiegel@blockandco.com

Ruskin Heights Shopping Center

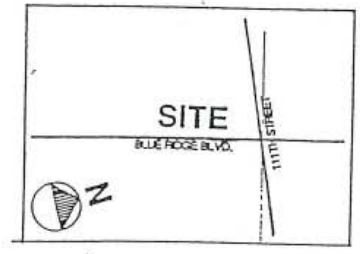
11102-11498 Blue Ridge Boulevard, Kansas City, Missouri



Red Bridge Road & Blue Ridge Boulevard (SWC), Kansas City, Missouri



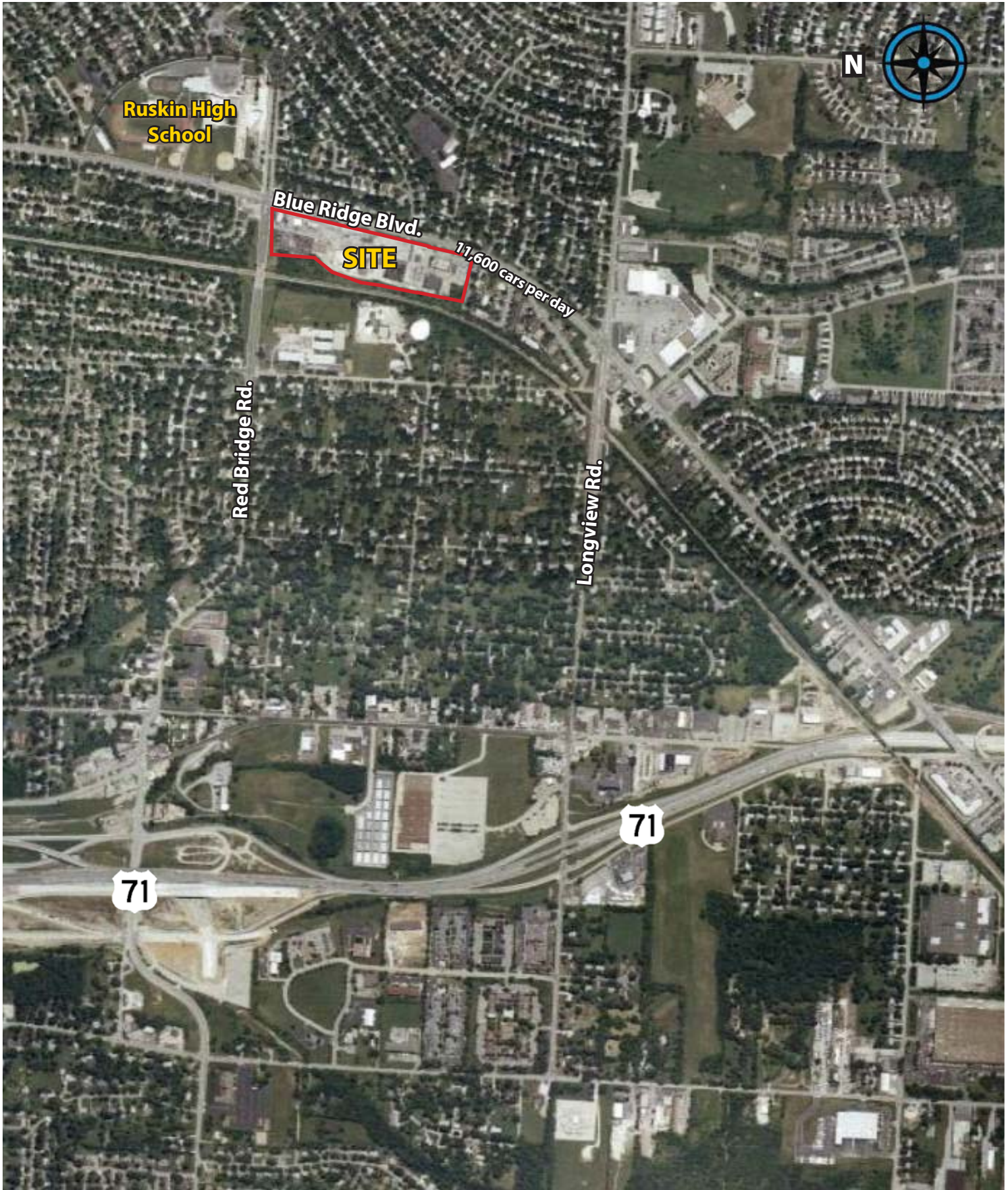
| ADDRESS | SQ. FT. | LIN. DIMS. |
|---------|---------|-------------------|
| 11104 | 1000 | 19'-5" X 53'-6" |
| 11106 | 625 | 12'-0" X 53'-6" |
| 11108 | 1503 | 24'-6" X 53'-6" |
| 11110 | 403 | 12'-6" X 16'-6" |
| 11112 | 625 | 16'-6" X 40'-6" |
| 11114 | 1605 | 11'-9" X 53'-6" |
| 11116 | 4500 | 30'-0" X 53'-6" |
| 11118 | 6915 | 41'-0" X 110'-0" |
| 11124 | 1156 | 70'-0" X 99'-0" |
| 11126 | 1292 | 17'-0" X 68'-0" |
| 11128 | 1000 | 19'-0" X 68'-0" |
| 11130 | 1088 | 14'-8" X 68'-0" |
| 11132 | 1156 | 16'-0" X 68'-0" |
| 11134 | 1088 | 17'-0" X 68'-0" |
| 11136 | 200 | 17'-6" X 68'-0" |
| 11138 | 9600 | 51'-0" X 120'-0" |
| 11145 | 1710 | 38'-0" X 90'-6" |
| 11148 | 2750 | 19'-0" X 90'-6" |
| 11152 | 3750 | 30'-0" X 92'-0" |
| 11154 | 23,000 | 50'-0" X 75'-0" |
| 1300 | 13,056 | 156'-5" X 147'-0" |
| 1304 | 5400 | 95'-0" X 137'-6" |
| 1498 | 1500 | 60'-0" X 90'-0" |
| 6921 | 10,369 | |



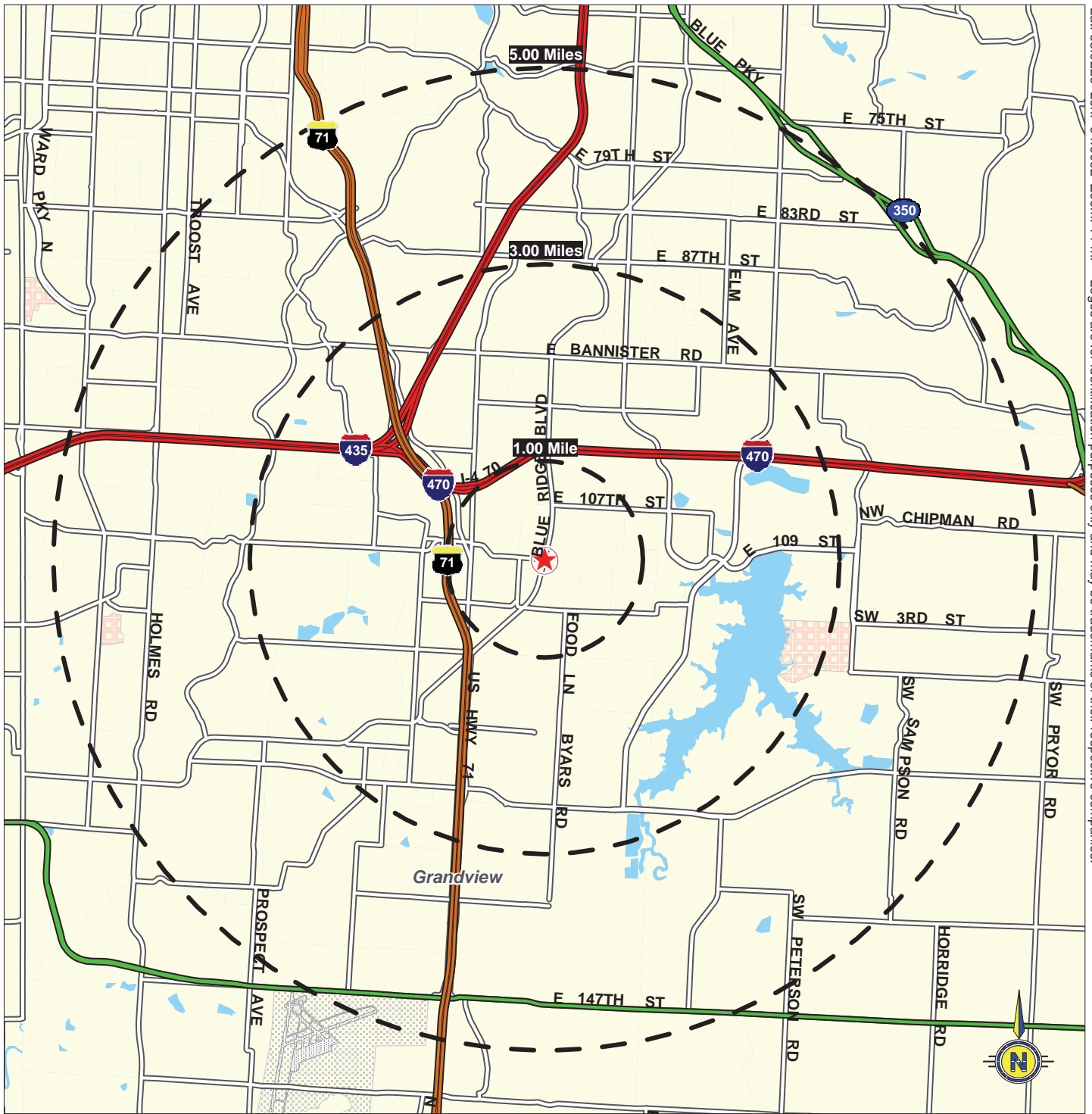
All information furnished regarding property for sale or lease is from sources deemed reliable, but no warranty or representation is made as to the accuracy thereof and the same is subject to errors, omissions, changes of prices, rental or other conditions, prior sale or lease or withdrawal without notice.

Ruskin Heights Shopping Center

11102-11498 Blue Ridge Boulevard, Kansas City, Missouri



Lat: 38.9226 Lon: -94.5092 Zoom: 1:1 mi Logos are for identification purposes only and may be trademarks of their respective companies.



©2008, SITES USA Inc., Chandler, AZ (480) 491-1112. All Rights Reserved.

11102-11498 Blue Ridge Boulevard
Kansas City, Missouri

January 2008

This map was produced using data from private and government sources deemed to be reliable. The information herein is provided without representation or warranty.

SUMMARY DEMOGRAPHIC PROFILE

1990 - 2000 Census, 2010 Estimates & 2015 Projections

Calculated using Proportional Block Groups

Prepared For

Lat/Lon: 38.92252/-94.50934

October 2011

RS1

| Red Bridge Road & Blue Ridge Boulevard Kansas City, Missouri | | 1.00 mi radius | 3.00 mi radius | 5.00 mi radius |
|---|---|-------------------|-------------------|-------------------|
| POPULATION | 2010 Estimated Population | 10,708 | 56,728 | 123,242 |
| | 2015 Projected Population | 11,143 | 59,054 | 129,232 |
| | 2000 Census Population | 10,452 | 53,884 | 113,112 |
| | 1990 Census Population | 10,675 | 54,195 | 110,822 |
| | Historical Annual Growth 1990 to 2010 | 0.0% | 0.2% | 0.6% |
| | Projected Annual Growth 2010 to 2015 | 0.8% | 0.8% | 1.0% |
| | 2010 Median Age | 32.4 | 34.8 | 36.7 |
| HOUSEHOLDS | 2010 Estimated Households | 3,767 | 20,965 | 46,775 |
| | 2015 Projected Households | 3,757 | 20,927 | 46,962 |
| | 2000 Census Households | 3,895 | 21,081 | 46,059 |
| | 1990 Census Households | 3,923 | 20,596 | 43,929 |
| | Historical Annual Growth 1990 to 2010 | -0.2% | 0.1% | 0.3% |
| | Projected Annual Growth 2010 to 2015 | -0.1% | -0.0% | 0.1% |
| POPULATION BY RACE | 2010 Estimated White | 52.1% | 57.0% | 65.4% |
| | 2010 Estimated Black or African American | 42.3% | 37.5% | 29.1% |
| | 2010 Estimated Asian & Pacific Islander | 1.0% | 1.6% | 1.8% |
| | 2010 Estimated American Indian & Native Alaskan | 0.6% | 0.5% | 0.5% |
| | 2010 Estimated Other Races | 3.9% | 3.5% | 3.1% |
| | 2010 Estimated Hispanic | 6.8% | 6.7% | 6.5% |
| INCOME | 2010 Estimated Average Household Income | \$ 47,662 | \$ 55,092 | \$ 62,508 |
| | 2010 Estimated Median Household Income | \$ 40,846 | \$ 46,589 | \$ 52,182 |
| | 2010 Estimated Per Capita Income | \$ 16,791 | \$ 20,651 | \$ 24,054 |
| EDUCATION (AGE 25+) | 2010 Elementary | 2.5% | 2.2% | 2.1% |
| | 2010 Some High School | 11.0% | 7.8% | 6.6% |
| | 2010 High School Graduate | 34.0% | 30.3% | 28.6% |
| | 2010 Some College | 26.9% | 27.0% | 25.1% |
| | 2010 Associates Degree Only | 7.5% | 8.7% | 8.7% |
| | 2010 Bachelors Degree Only | 12.2% | 15.7% | 18.0% |
| | 2010 Graduate Degree | 5.8% | 8.2% | 10.9% |
| BUSINESS | Number of Businesses | 238 | 1,334 | 2,951 |
| | Total Number of Employees | 1,811 | 16,638 | 48,543 |
| | Employee Population per Business | 7.6 | 12.5 | 16.5 |
| | Residential Population per Business | 45.0 | 42.5 | 41.8 |

This report was produced using data from private and government sources deemed to be reliable. The information herein is provided without representation or warranty.