



MULTI-USE BUILDINGS FOR SALE

728 S. Jonesville Lane, Joplin, Missouri

Joplin Missouri



SALE PRICE: \$550,000 | 1.5 ACRES

DEMOGRAPHICS

	1 mile	3 miles	5 miles
Estimated Population	508	8,876	30,312
Avg. Household Income	\$100,421	\$93,424	\$81,766

- Three buildings along US Route 66
- 2,600 SF shop building
- 3,840 SF office building with 2,000 SF shop
- 672 SF concrete building
- All buildings have HVAC
- Traffic count of 9,043 vehicles per day
- Perfect for dealership, mechanic and automotive uses
- Large building has a full kitchen and bathroom

 [CLICK HERE TO VIEW MORE LISTING INFORMATION](#)

[For More Information Contact:](#)

Exclusive Agents

GREG ROBERTS | 816.412.7384 | groberts@blockandco.com

BOB JAEKEL | 816.412.7365 | bjaekel@blockandco.com



DRONE PHOTOS





MULTI-USE BUILDINGS FOR SALE

728 S. Jonesville Lane, Joplin, Missouri

AERIAL

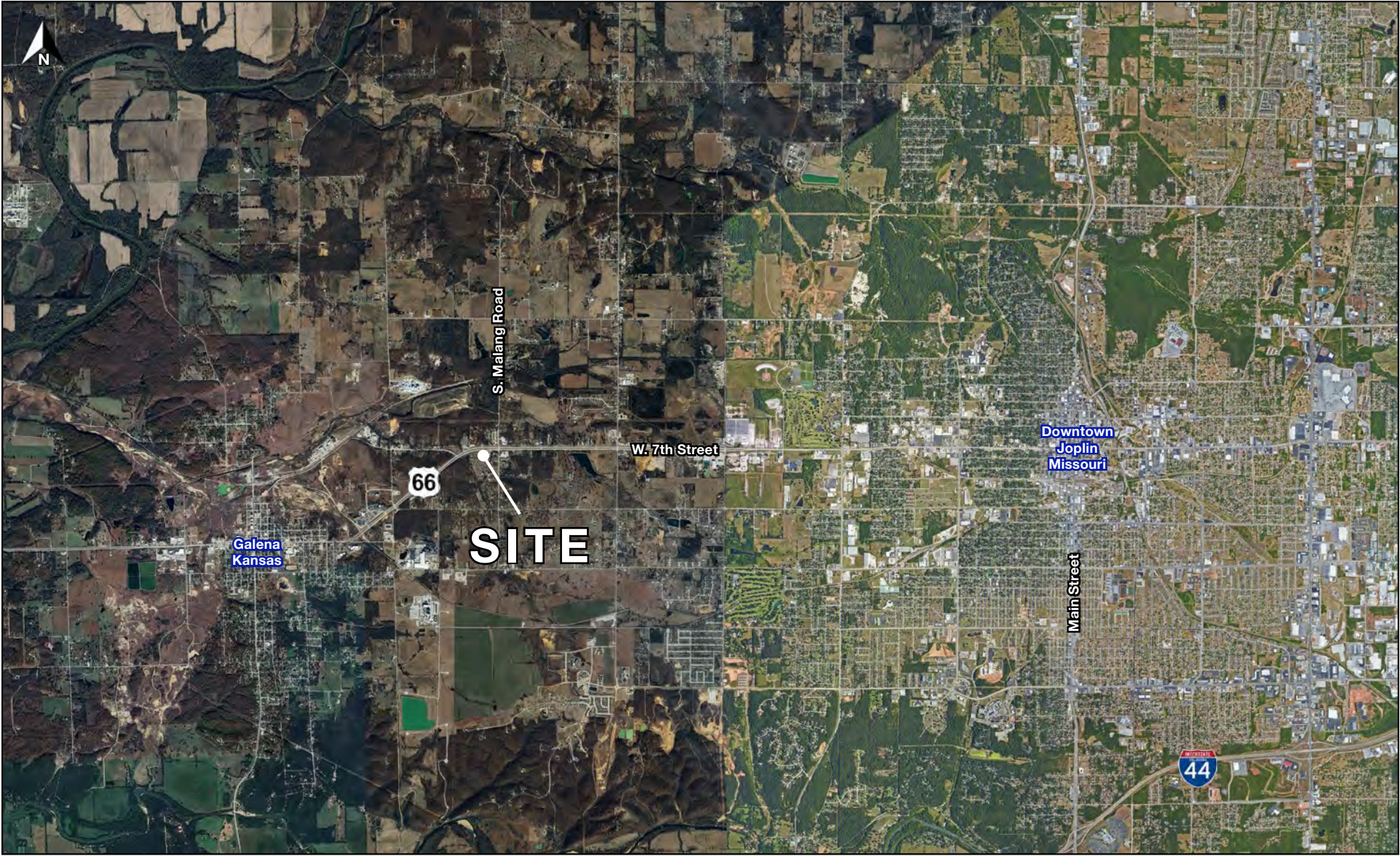


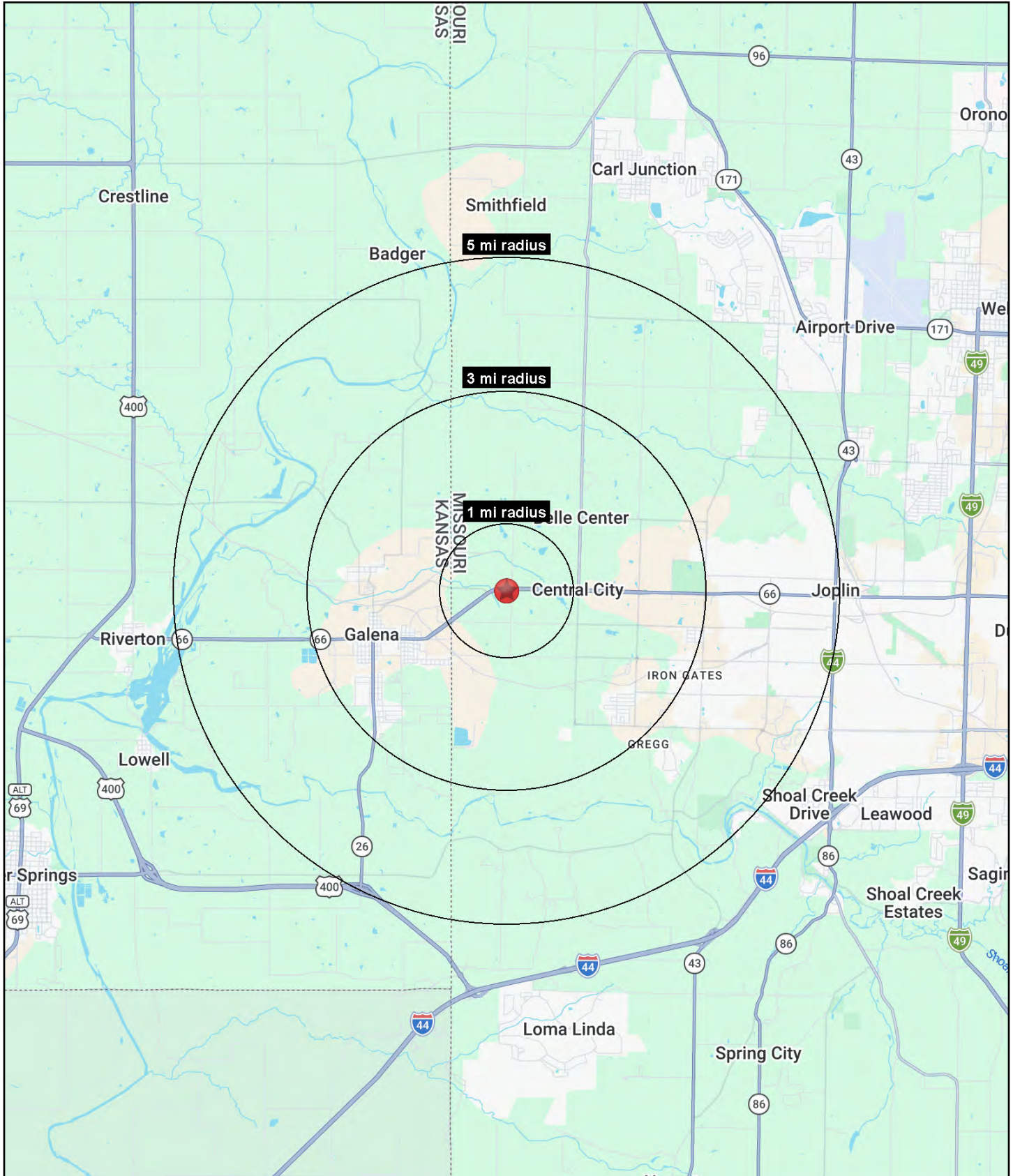


MULTI-USE BUILDINGS FOR SALE

728 S. Jonesville Lane, Joplin, Missouri

AERIAL







MULTI-USE BUILDINGS FOR SALE

728 S. Jonesville Lane, Joplin, Missouri

728 S. Jonesville Lane Joplin, MO 64801	1 mi radius	3 mi radius	5 mi radius
Population			
2025 Estimated Population	508	8,876	30,312
2030 Projected Population	546	9,361	31,471
2020 Census Population	542	8,555	29,205
2010 Census Population	461	8,110	28,875
Projected Annual Growth 2025 to 2030	1.5%	1.1%	0.8%
Historical Annual Growth 2010 to 2025	0.7%	0.6%	0.3%
2025 Median Age	39.7	40.0	37.8
Households			
2025 Estimated Households	212	3,646	12,729
2030 Projected Households	230	3,881	13,373
2020 Census Households	203	3,268	11,706
2010 Census Households	172	3,082	11,521
Projected Annual Growth 2025 to 2030	1.7%	1.3%	1.0%
Historical Annual Growth 2010 to 2025	1.6%	1.2%	0.7%
Race and Ethnicity			
2025 Estimated White	89.5%	87.8%	85.3%
2025 Estimated Black or African American	1.3%	1.5%	2.8%
2025 Estimated Asian or Pacific Islander	1.0%	1.2%	1.5%
2025 Estimated American Indian or Native Alaskan	1.4%	1.8%	1.6%
2025 Estimated Other Races	6.7%	7.7%	8.8%
2025 Estimated Hispanic	6.9%	5.5%	6.9%
Income			
2025 Estimated Average Household Income	\$100,421	\$93,424	\$81,766
2025 Estimated Median Household Income	\$72,429	\$69,641	\$61,414
2025 Estimated Per Capita Income	\$41,854	\$38,483	\$34,486
Education (Age 25+)			
2025 Estimated Elementary (Grade Level 0 to 8)	3.0%	1.9%	2.5%
2025 Estimated Some High School (Grade Level 9 to 11)	10.5%	6.5%	7.7%
2025 Estimated High School Graduate	34.9%	34.4%	32.5%
2025 Estimated Some College	19.0%	23.3%	25.0%
2025 Estimated Associates Degree Only	8.0%	7.6%	7.1%
2025 Estimated Bachelors Degree Only	16.3%	17.4%	16.1%
2025 Estimated Graduate Degree	8.4%	8.8%	9.2%
Business			
2025 Estimated Total Businesses	38	224	1,205
2025 Estimated Total Employees	448	2,875	18,660
2025 Estimated Employee Population per Business	11.7	12.8	15.5
2025 Estimated Residential Population per Business	13.2	39.7	25.2

©2026, Sites USA, Chandler, Arizona, 480-491-1112 Demographic Source: Applied Geographic Solutions 11/2025, TIGER Geography - RS1

