

# FORMER HY-VEE GROCERY STORE

For Lease



25,000 - 35,000 Sq Ft Available  
NEQ 65th Street & Quivira Road, Shawnee, Kansas



Estimated Population  
189,362

Average Household Income  
\$70,001

Five Mile Radius

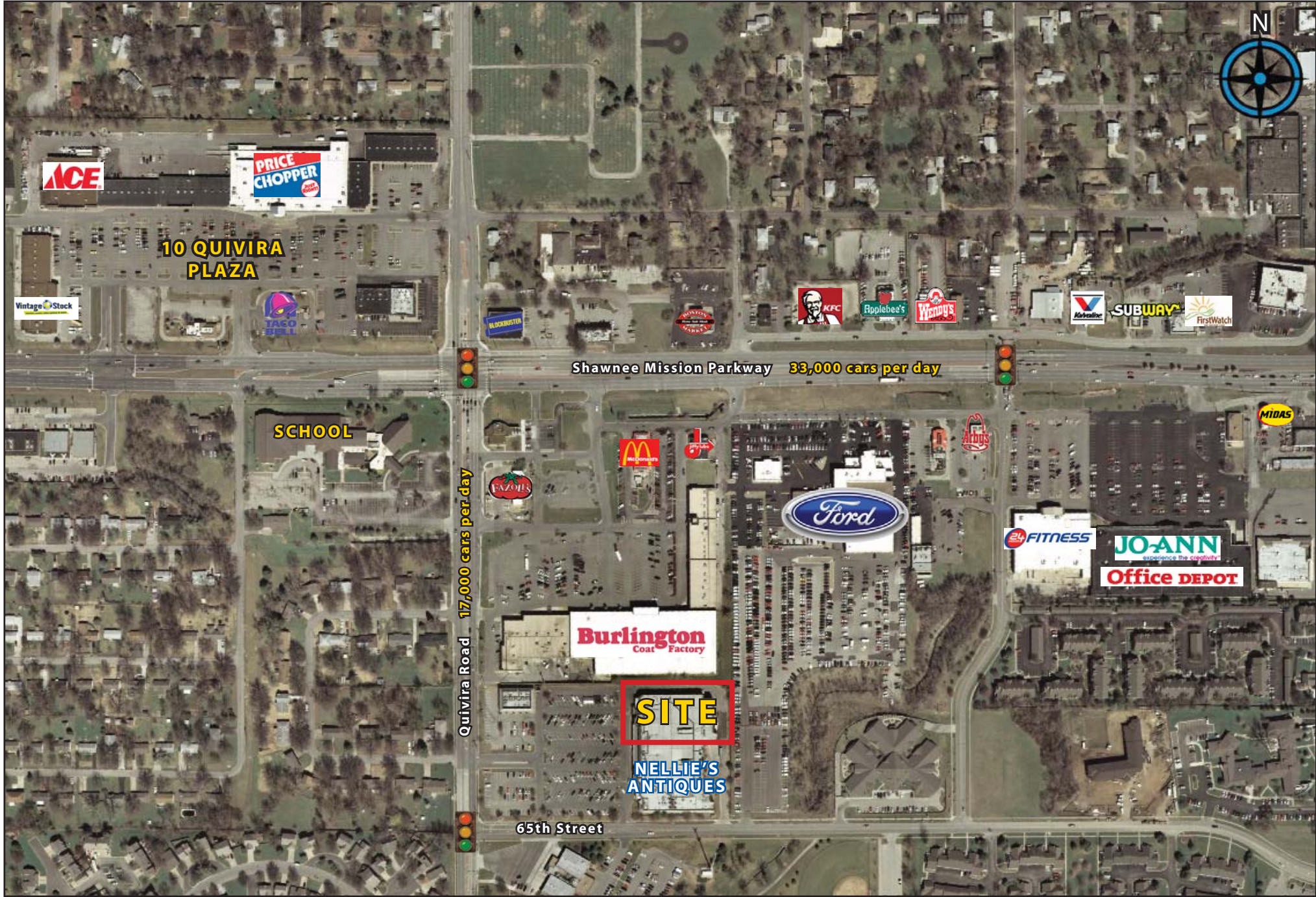
- High retail and residential density
- Divisible
- Competitive lease rate
- Located minutes from I-35 off of Shawnee Mission Parkway & Quivira Road
- Intersection carries over 50,000 cars per day
- Ample parking

BLOCK & COMPANY, INC., Realtors 816.753.6000  
In the Skelly Building on the Country Club Plaza  
605 West 47th Street, Suite 200, Kansas City, Missouri 64112

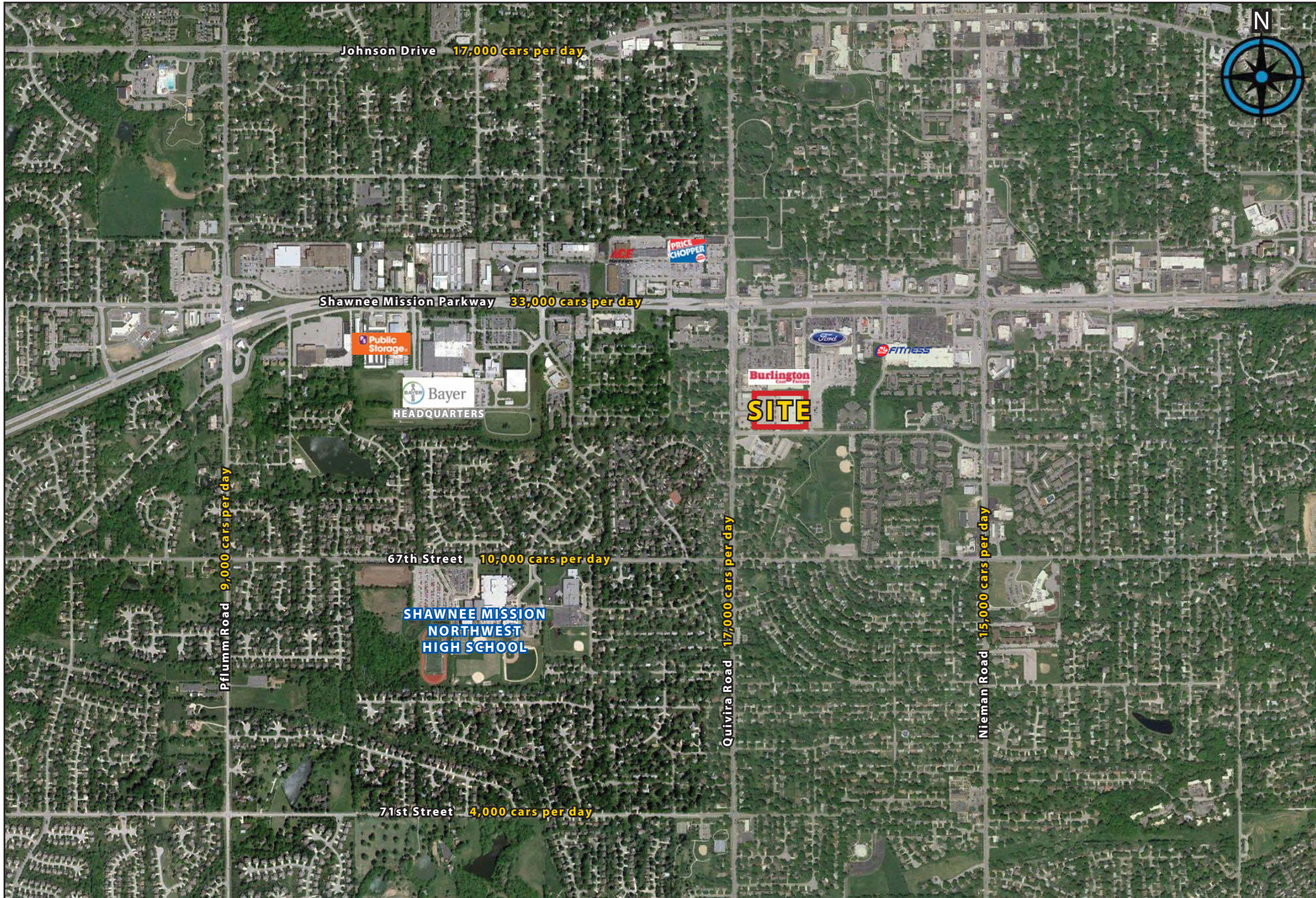
For Information Contact:

**Steve Gasperi**  
816.412.7365  
sgasperi@blockandco.com

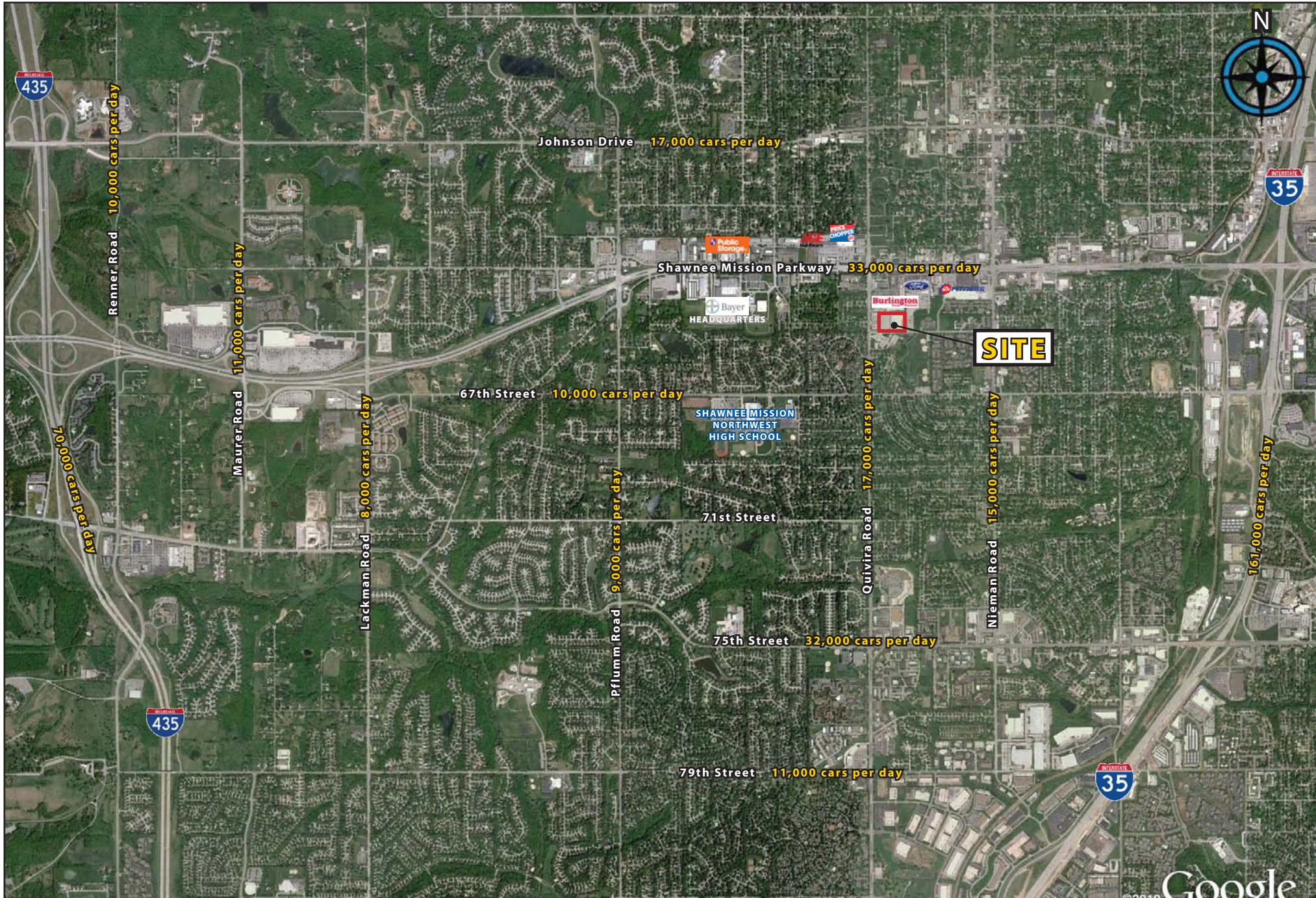
NEQ 65th Street & Quivira Road, Shawnee, Kansas



# NEQ 65th Street & Quivira Road, Shawnee, Kansas



# NEQ 65th Street & Quivira Road, Shawnee, Kansas



Lat: 39.011 Lon: -94.7238 Zoom: 11 mi Logos are for identification purposes only and may be trademarks of their respective companies.



©2010, SITES USA Inc., Chandler, AZ (480) 491-1112. All Rights Reserved.

## 65th Street & Quivira Road Shawnee, Kansas

February 2010

This map was produced using data from private and government sources deemed to be reliable. The information herein is provided without representation or warranty.

# SUMMARY DEMOGRAPHIC PROFILE

1990 - 2000 Census, 2009 Estimates & 2014 Projections

Calculated using Proportional Block Groups

Lat/Lon: 39.01114/-94.72382

June 2011

RS1

65th Street & Quivira Road Shawnee, Kansas		1.00 mi radius	3.00 mi radius	5.00 mi radius
<b>POPULATION</b>	2009 Estimated Population	10,750	79,854	189,220
	2014 Projected Population	10,768	82,566	193,266
	2000 Census Population	11,174	78,289	188,792
	1990 Census Population	11,488	75,758	186,527
	Historical Annual Growth 1990 to 2009	-0.3%	0.3%	0.1%
	Projected Annual Growth 2009 to 2014	0.0%	0.7%	0.4%
	2009 Median Age	38.1	37.5	38.1
<b>HOUSEHOLDS</b>	2009 Estimated Households	4,406	31,191	75,941
	2014 Projected Households	4,052	29,635	72,168
	2000 Census Households	4,800	32,052	78,847
	1990 Census Households	4,639	30,358	75,232
	Historical Annual Growth 1990 to 2009	-0.3%	0.1%	0.0%
	Projected Annual Growth 2009 to 2014	-1.6%	-1.0%	-1.0%
<b>POPULATION BY RACE</b>	2009 Estimated White	81.4%	82.1%	83.7%
	2009 Estimated Black or African American	6.8%	6.8%	6.0%
	2009 Estimated Asian & Pacific Islander	3.0%	3.4%	3.1%
	2009 Estimated American Indian & Native Alaskan	0.8%	0.8%	0.7%
	2009 Estimated Other Races	7.9%	6.9%	6.5%
	2009 Estimated Hispanic	9.3%	8.4%	8.9%
<b>INCOME</b>	2009 Estimated Average Household Income	\$ 62,074	\$ 72,527	\$ 69,966
	2009 Estimated Median Household Income	\$ 59,897	\$ 71,084	\$ 69,145
	2009 Estimated Per Capita Income	\$ 26,417	\$ 28,611	\$ 28,565
<b>EDUCATION (AGE 25+)</b>	2009 Elementary	2.5%	1.7%	1.7%
	2009 Some High School	4.4%	3.0%	3.2%
	2009 High School Graduate	25.5%	21.4%	22.0%
	2009 Some College	22.7%	22.6%	22.0%
	2009 Associates Degree Only	9.4%	8.9%	8.1%
	2009 Bachelors Degree Only	26.0%	29.2%	29.8%
	2009 Graduate Degree	9.6%	13.1%	13.2%
<b>BUSINESS</b>	Number of Businesses	546	3,391	8,693
	Total Number of Employees	5,786	54,416	134,241
	Employee Population per Business	10.6	16.0	15.4
	Residential Population per Business	19.7	23.6	21.8

This report was produced using data from private and government sources deemed to be reliable. The information herein is provided without representation or warranty.