

RETAIL SPACE AVAILABLE For Lease



Frolics Plaza Shopping Center 7101 - 7121 NW Barry Road, Kansas City, Missouri



Estimated Population
84,323

Average Household Income
\$75,101

Five Mile Radius

- Located at the intersection of I-29 & Barry Road
- Highly sought-after location for small to medium size shops
- Across from Zona Rosa Retail Center
- Excellent visibility and signage to Barry Road & Prairie View Road
- Intersection carries over 85,000 cars per day

BLOCK & COMPANY, INC., Realtors 816.753.6000
In the Skelly Building on the Country Club Plaza
605 West 47th Street, Suite 200, Kansas City, Missouri 64112

For Information Contact:

John Cobb
816.412.7326
jcobb@blockandco.com

Jody Minder
816.412.7358
jminder@blockandco.com

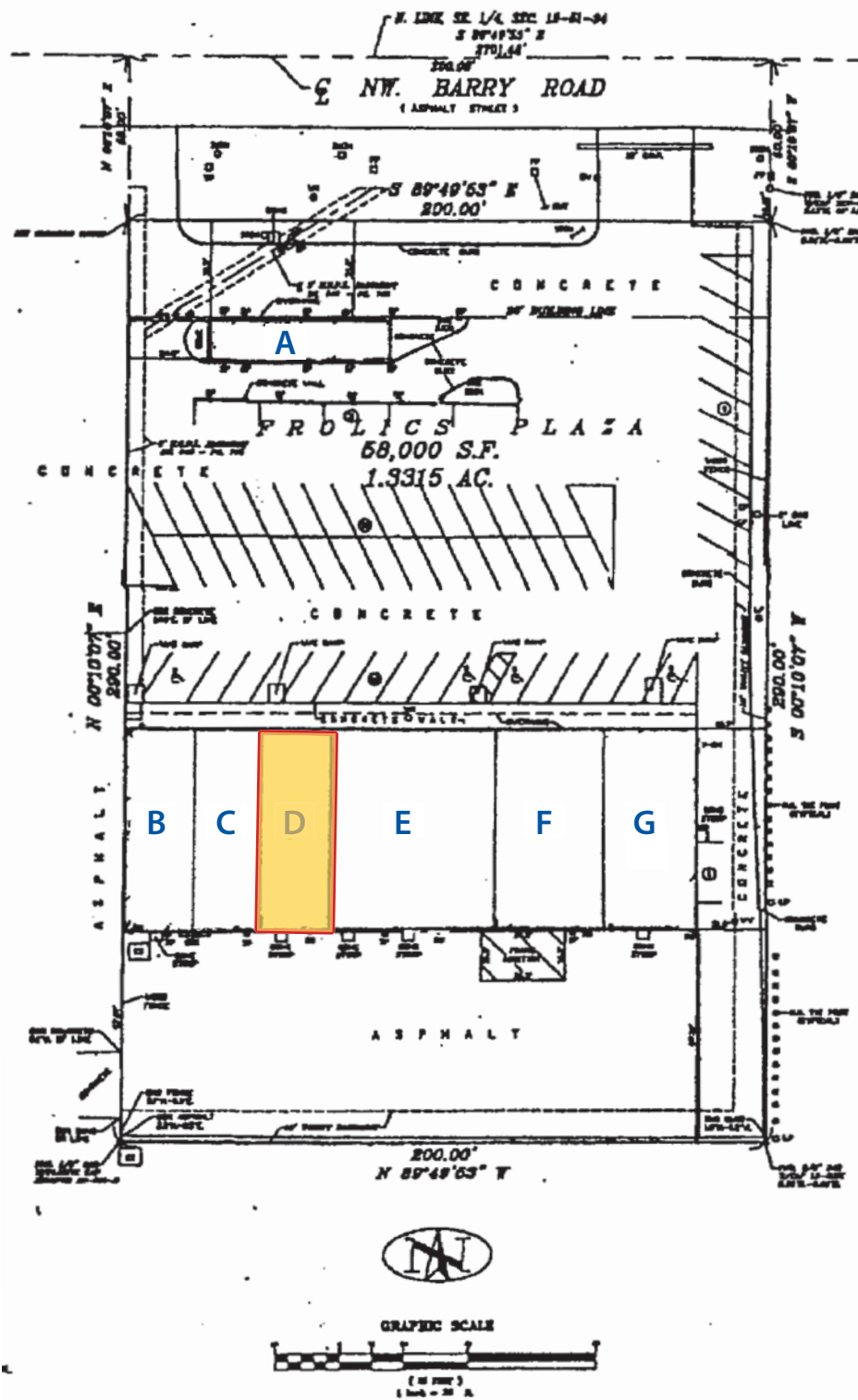
David Block
816.412.7400
dblock@blockandco.com

7101 - 7121 NW Barry Road, Kansas City, Missouri

TENANTS	
1	OUTBACK STEAKHOUSE
2	QT Quikrip
3	Minsky's PIZZA Cafe
4	PHILLIPS 66
5	Bank of America
6	SUPER 8 MOTEL
7	McDonald's
8	QUALITY INN
9	Ford Thoroughbred
10	HOBBY LOBBY
11	BLUENOSTER
12	Worldeats
13	TACO BELL PIZZA HUT
14	Wendy's
15	Applebee's
16	ON THE BORDER MEXICAN GRILL & CANTINA
17	chili's GRILL & BAR
18	HOOTERS
19	Tanner's



7101 - 7121 NW Barry Road, Kansas City, Missouri



<u>SPACE</u>	<u>TENANT</u>	<u>ADDRESS</u>	<u>SQ FT</u>
A	Italian Gardens To Go	7121 NW Barry Rd	1,160
B	Verizon Wireless	7115 NW Barry Rd	1,300
C	New Image Salon & Spa	7113 NW Barry Rd	1,300
D	AVAILABLE	7111 NW Barry Rd	1,300
E	Cirque d'Alex Creamery & Café	7107 NW Barry Rd	3,250
F	IXTAPA Mexican Cuisine	7103 NW Barry Rd	1,950
G	Rainbow Chinese Restaurant	7101 NW Barry Rd	2,600

Lat: 39.2469 Lon: -94.6584 Zoom: 11.01 mi Logos are for identification purposes only and may be trademarks of their respective companies.



©2010, SITES USA Inc., Chandler, AZ (480) 491-1112. All Rights Reserved.

I-29 & NW Barry Road Kansas City, Missouri

May 2010

This map was produced using data from private and government sources deemed to be reliable. The information herein is provided without representation or warranty.

SUMMARY DEMOGRAPHIC PROFILE

1990 - 2000 Census, 2009 Estimates & 2014 Projections

Calculated using Proportional Block Groups

Lat/Lon: 39.2469/-94.65933

May 2011

RS

I-29 & NW Barry Road Kansas City, Missouri		1.00 mi radius	3.00 mi radius	5.00 mi radius
POPULATION	2009 Estimated Population	7,959	36,747	84,323
	2014 Projected Population	8,409	39,466	93,813
	2000 Census Population	7,270	31,776	71,842
	1990 Census Population	5,251	24,591	56,090
	Historical Annual Growth 1990 to 2009	2.7%	2.6%	2.6%
	Projected Annual Growth 2009 to 2014	1.1%	1.5%	2.3%
	2009 Median Age	33.0	37.9	35.9
HOUSEHOLDS	2009 Estimated Households	3,210	14,266	31,633
	2014 Projected Households	2,983	13,479	31,805
	2000 Census Households	3,161	13,264	29,092
	1990 Census Households	2,161	9,713	21,840
	Historical Annual Growth 1990 to 2009	2.6%	2.5%	2.4%
	Projected Annual Growth 2009 to 2014	-1.4%	-1.1%	0.1%
POPULATION BY RACE	2009 Estimated White	84.1%	88.5%	87.1%
	2009 Estimated Black or African American	6.8%	5.1%	4.7%
	2009 Estimated Asian & Pacific Islander	5.3%	3.6%	2.8%
	2009 Estimated American Indian & Native Alaskan	-	0.0%	0.3%
	2009 Estimated Other Races	3.9%	2.9%	5.1%
	2009 Estimated Hispanic	7.4%	5.5%	6.2%
INCOME	2009 Estimated Average Household Income	\$ 68,060	\$ 74,566	\$ 75,101
	2009 Estimated Median Household Income	\$ 66,241	\$ 71,993	\$ 71,614
	2009 Estimated Per Capita Income	\$ 27,454	\$ 29,220	\$ 28,544
EDUCATION (AGE 25+)	2009 Elementary	0.4%	0.9%	0.9%
	2009 Some High School	2.5%	2.9%	3.6%
	2009 High School Graduate	23.7%	24.1%	26.1%
	2009 Some College	23.2%	22.3%	22.5%
	2009 Associates Degree Only	10.2%	9.8%	9.9%
	2009 Bachelors Degree Only	27.8%	26.2%	25.0%
	2009 Graduate Degree	12.2%	13.8%	12.0%
BUSINESS	Number of Businesses	362	1,135	2,698
	Total Number of Employees	5,017	16,677	37,689
	Employee Population per Business	13.9	14.7	14.0
	Residential Population per Business	22.0	32.4	31.3

This report was produced using data from private and government sources deemed to be reliable. The information herein is provided without representation or warranty.