

FOR LEASE OR REDEVELOPMENT

SE Corner of I-435 & Bannister Road



2,000 Sq Ft Former Bank Building

5373 Bannister Road, Kansas City, Missouri



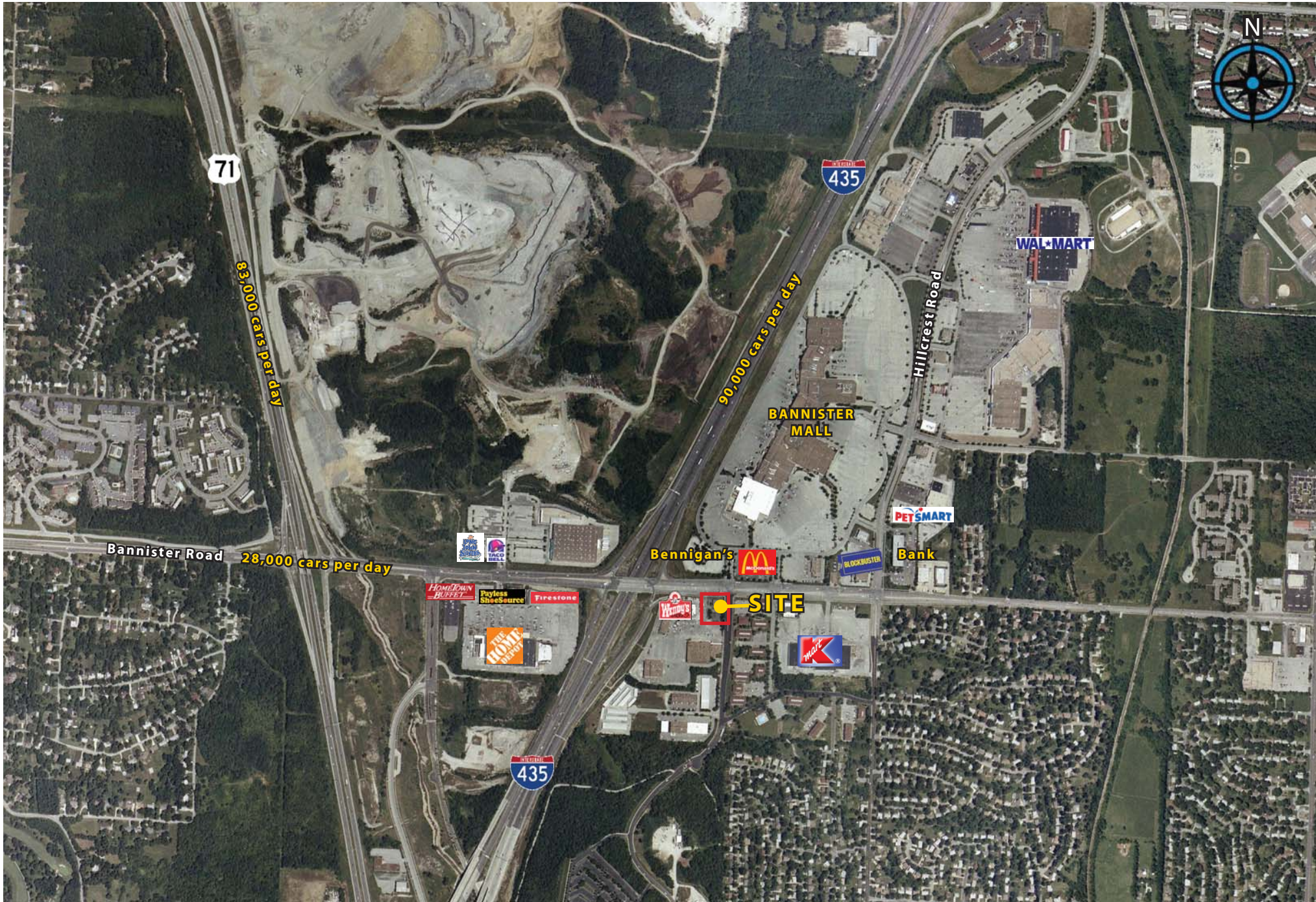
Estimated Population
162,988

Average Household Income
\$54,608

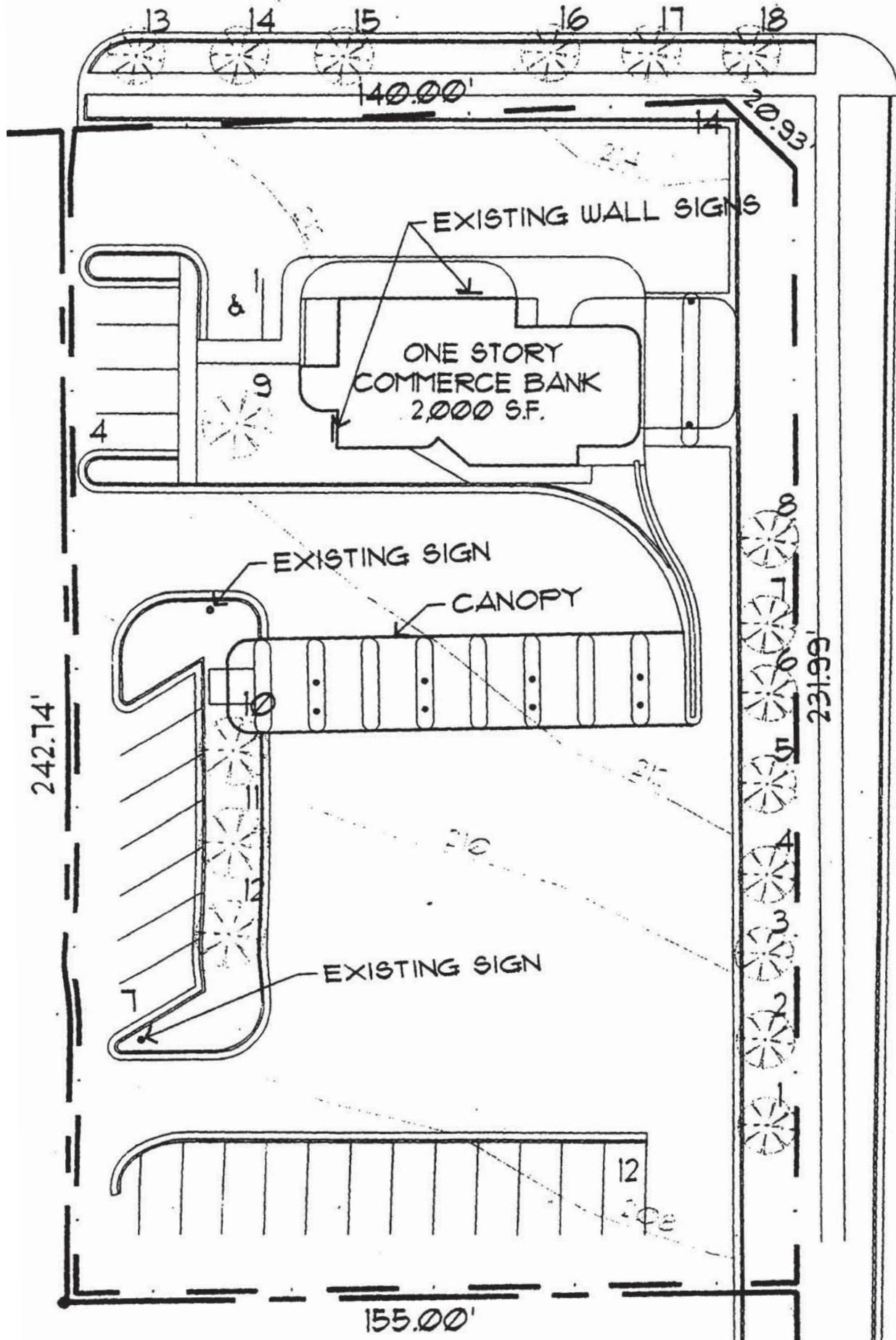
Five Mile Radius

- Bannister Square Shopping Center pad building
- 37,835 sq ft (.87 acre) lot size
- Directly across from Bannister Mall
- Next to Wendy's Restaurant
- Located at a controlled intersection
- ATM on site has over 5,000 transactions per month
- Intersection carries over 118,000 cars per day

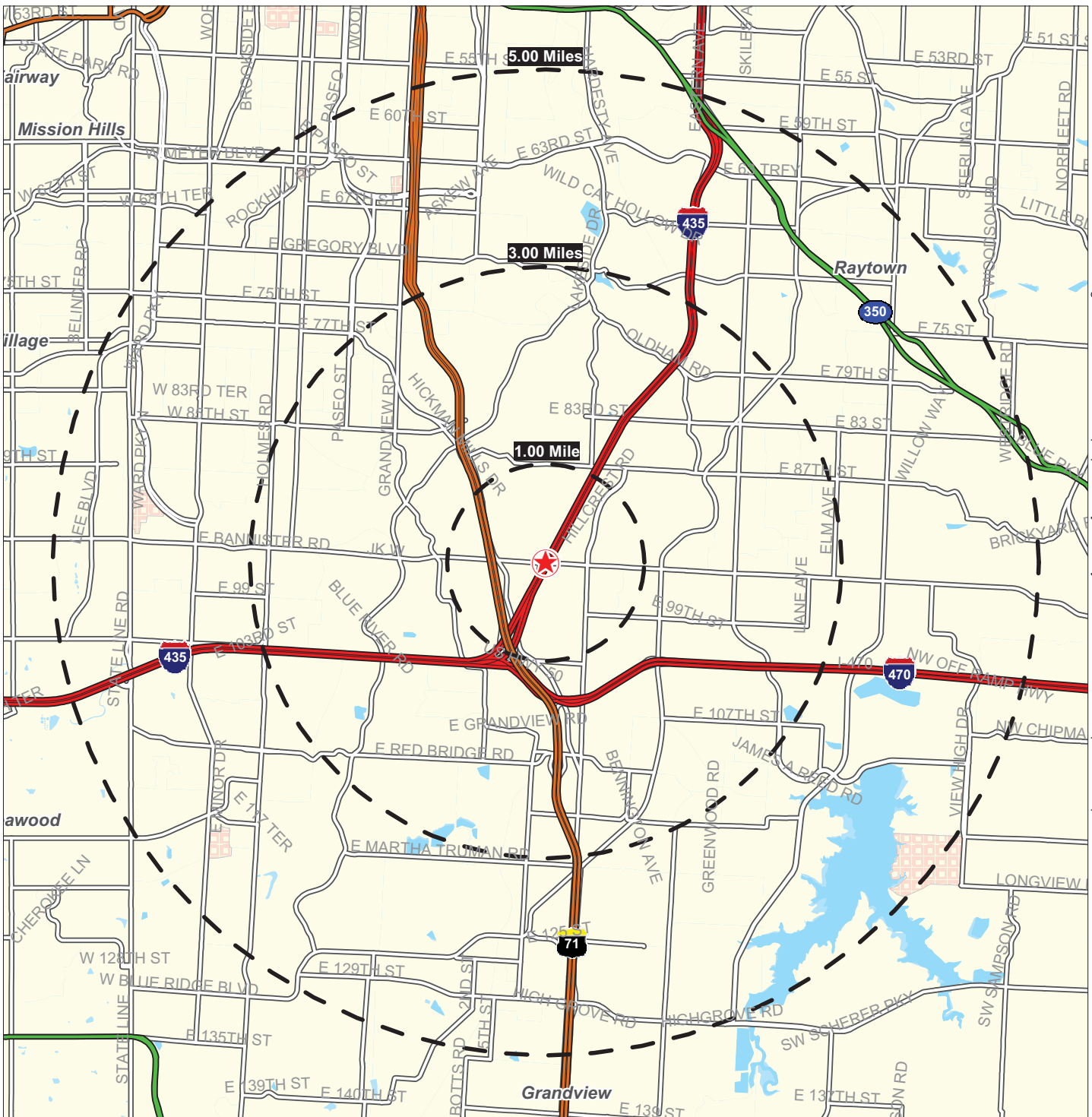
5373 Bannister Road, Kansas City, Missouri



5373 Bannister Road, Kansas City, Missouri



Lat: 38.9534 Lon: -94.5297 Zoom: 11 mi Logos are for identification purposes only and may be trademarks of their respective companies.



Interstate 435 & Bannister Road Kansas City, Missouri

February 2010

This map was produced using data from private and government sources deemed to be reliable. The information herein is provided without representation or warranty.

SUMMARY DEMOGRAPHIC PROFILE

1990 - 2000 Census, 2009 Estimates & 2014 Projections

Calculated using Proportional Block Groups

Lat/Lon: 38.95337/-94.52973

February 2010

RS1

Interstate 435 & Bannister Road Kansas City, Missouri		1.00 mi radius	3.00 mi radius	5.00 mi radius
POPULATION	2009 Estimated Population	4,597	52,062	158,756
	2014 Projected Population	4,300	49,638	152,288
	2000 Census Population	4,866	54,485	164,772
	1990 Census Population	4,922	55,945	168,624
	Historical Annual Growth 1990 to 2009	-0.3%	-0.4%	-0.3%
	Projected Annual Growth 2009 to 2014	-1.3%	-0.9%	-0.8%
	2009 Median Age	31.5	34.7	38.1
HOUSEHOLDS	2009 Estimated Households	2,010	21,230	67,233
	2014 Projected Households	1,881	20,335	64,350
	2000 Census Households	2,106	22,012	69,331
	1990 Census Households	2,172	22,266	68,221
	Historical Annual Growth 1990 to 2009	-0.4%	-0.2%	-0.1%
	Projected Annual Growth 2009 to 2014	-1.3%	-0.8%	-0.9%
POPULATION BY RACE	2009 Estimated White	44.2%	52.2%	59.0%
	2009 Estimated Black or African American	49.3%	42.0%	35.9%
	2009 Estimated Asian & Pacific Islander	1.5%	1.3%	1.3%
	2009 Estimated American Indian & Native Alaskan	0.3%	0.3%	0.3%
	2009 Estimated Other Races	4.7%	4.1%	3.5%
	2009 Estimated Hispanic	7.2%	6.8%	6.3%
INCOME	2009 Estimated Average Household Income	\$ 42,658	\$ 46,489	\$ 54,270
	2009 Estimated Median Household Income	\$ 44,725	\$ 46,483	\$ 52,682
	2009 Estimated Per Capita Income	\$ 18,867	\$ 19,253	\$ 23,427
EDUCATION (AGE 25+)	2009 Elementary	1.7%	1.9%	1.8%
	2009 Some High School	8.5%	7.6%	7.1%
	2009 High School Graduate	30.3%	32.5%	29.3%
	2009 Some College	25.2%	26.2%	24.1%
	2009 Associates Degree Only	8.4%	8.1%	7.1%
	2009 Bachelors Degree Only	17.0%	15.9%	19.4%
	2009 Graduate Degree	8.9%	7.8%	11.1%
BUSINESS	Number of Businesses	115	1,200	5,681
	Total Number of Employees	2,607	22,109	82,099
	Employee Population per Business	22.7	18.4	14.5
	Residential Population per Business	40.1	43.4	27.9

This report was produced using data from private and government sources deemed to be reliable. The information herein is provided without representation or warranty.