

GROCERY ANCHORED NEW MARK S.C.

End Cap & In-Line Spaces For Lease



1,142 Sq Ft to 7,142 Sq Ft Spaces Available
102nd Street & N. Oak Trafficway, Kansas City, Missouri



Estimated Population
88,128

Average Household Income
\$78,095

Five Mile Radius

- End cap spaces of 1,200 sq ft and 2,975 sq ft
In-line spaces ranging from 1,142 sq ft to 7,124 sq ft
Former restaurant space of 4,800 sq ft
- Located two miles north of 152 Highway
& 1/2 mile east of 169 Highway
- Anchored by 52,000 sq ft high volume Sun Fresh Grocery
- N. Oak Trafficway recently improved to four lanes
- Great neighborhood center surrounded by residential

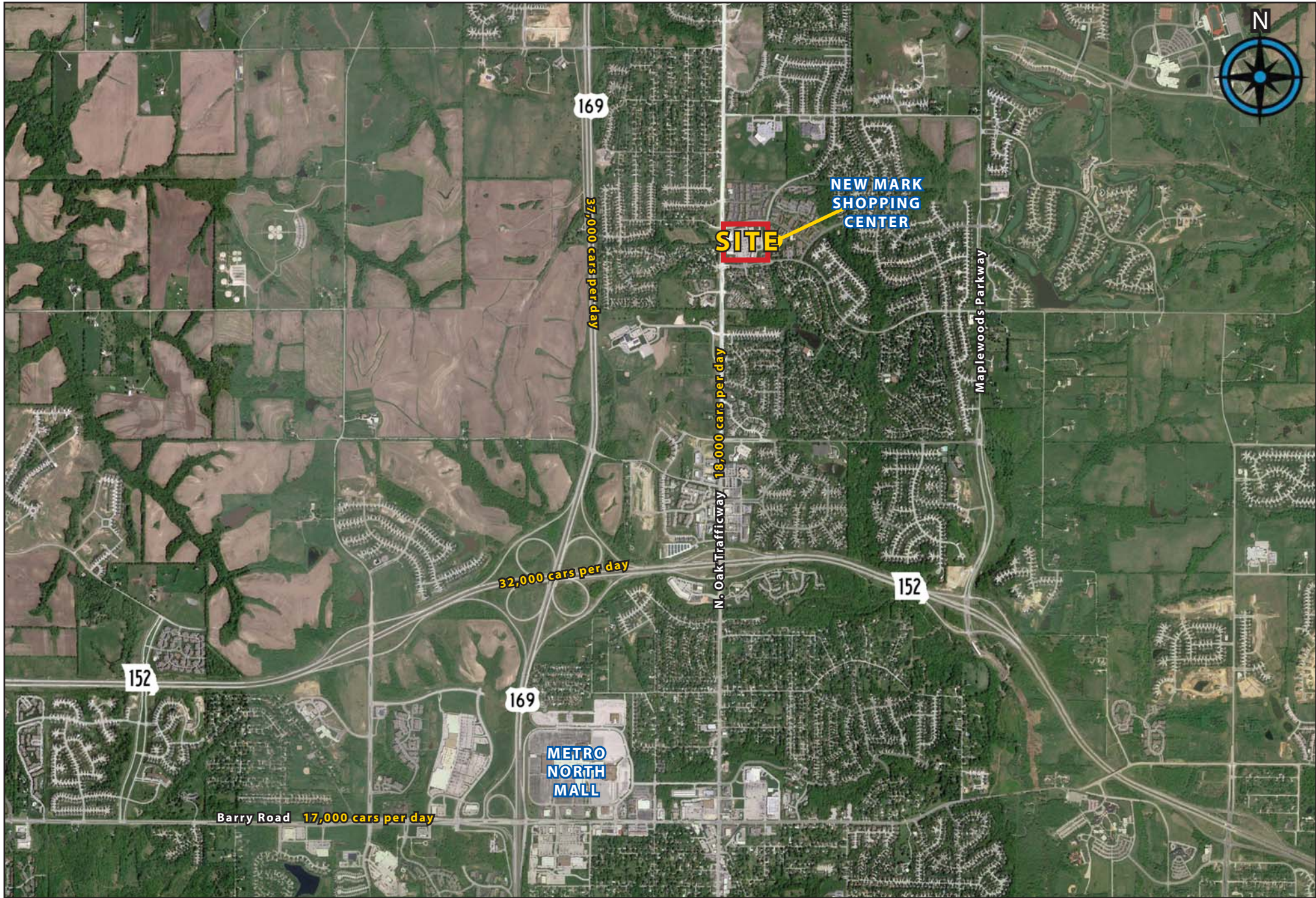
BLOCK & COMPANY, INC., Realtors 816.753.6000
In the Skelly Building on the Country Club Plaza
605 West 47th Street, Suite 200, Kansas City, Missouri 64112

For Information Contact:

Jody Minder
816.412.7358
jminder@blockandco.com

David Block
816.412.7400
dblock@blockandco.com

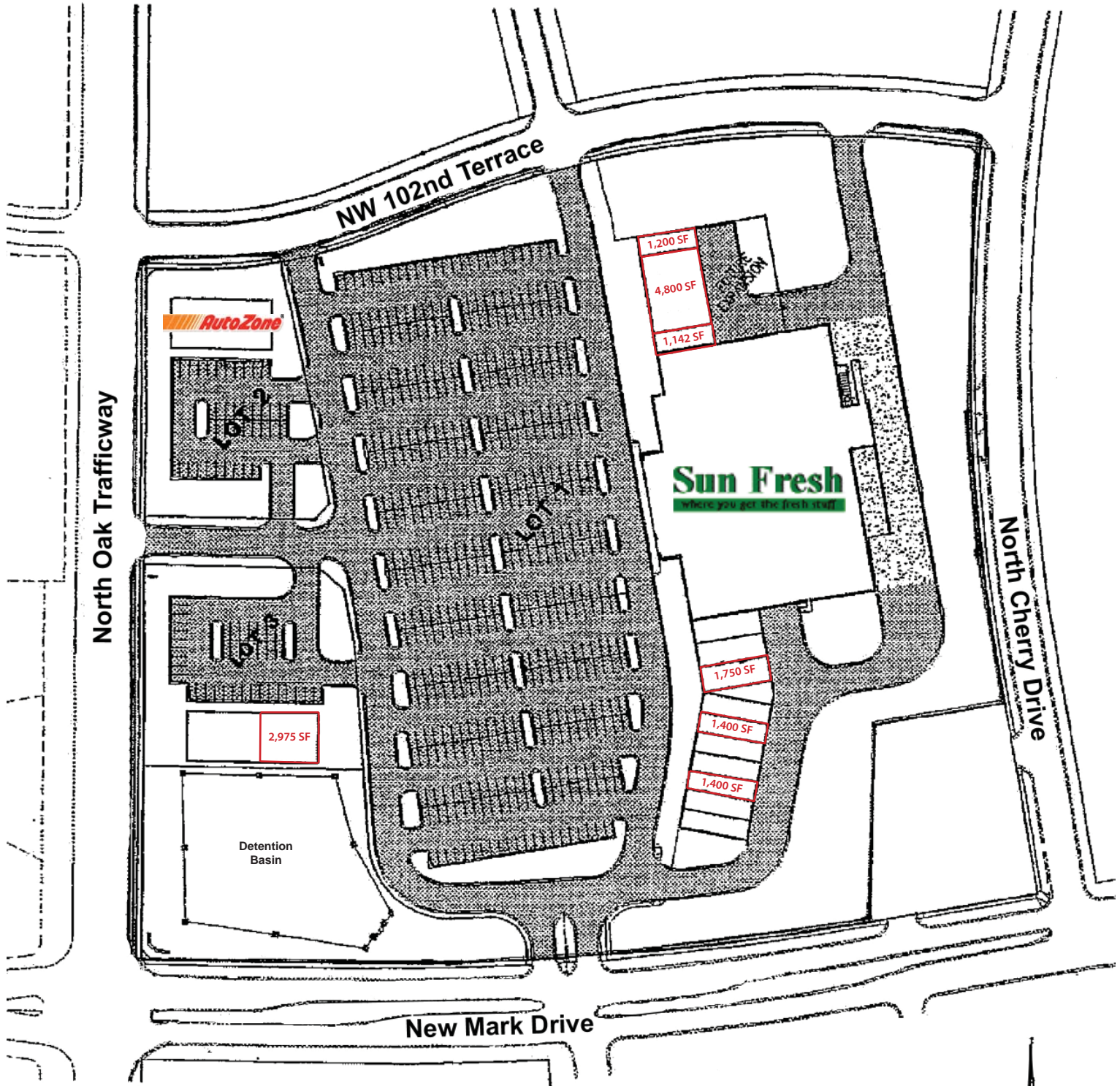
NEW MARK SHOPPING CENTER | 102nd Street & N. Oak Trafficway, Kansas City, Missouri

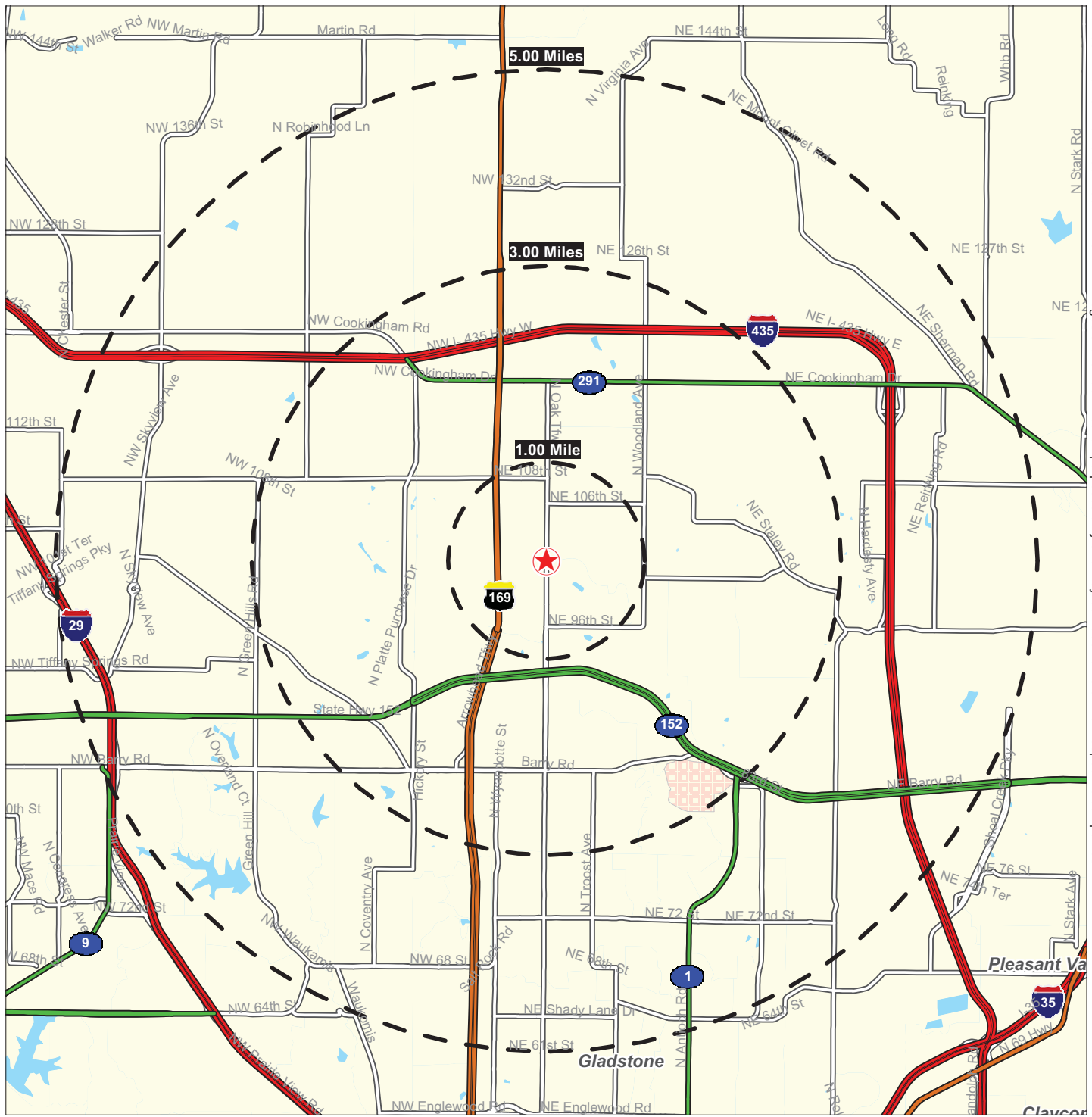


102nd Street & N. Oak Trafficway, Kansas City, Missouri



102nd Street & North Oak Trafficway, Kansas City, Missouri





©2012, SITES USA Inc., Chandler, AZ (480) 491-1112. All Rights Reserved.

102nd Street & N. Oak Trafficway Kansas City, Missouri

January 2012

This map was produced using data from private and government sources deemed to be reliable. The information herein is provided without representation or warranty.

SUMMARY DEMOGRAPHIC PROFILE

2000 - 2010 Census, 2011 Estimates & 2016 Projections

Calculated using Proportional Block Groups

Lat/Lon: 39.27729/-94.57561

January 2012

RS1

102nd Street & N. Oak Trafficway Kansas City, Missouri		1.00 mi radius	3.00 mi radius	5.00 mi radius
POPULATION	2011 Estimated Population	7,644	35,025	88,128
	2016 Projected Population	7,807	36,321	92,808
	2010 Census Population	7,315	34,412	86,176
	2000 Census Population	6,501	24,164	62,767
	Historical Annual Growth 2000 to 2011	1.6%	4.1%	3.7%
	Projected Annual Growth 2011 to 2016	0.4%	0.7%	1.1%
	2011 Median Age	34.1	35.9	36.2
HOUSEHOLDS	2011 Estimated Households	2,914	13,572	35,623
	2016 Projected Households	2,976	14,117	37,763
	2010 Census Households	2,777	13,320	34,870
	2000 Census Households	2,349	8,982	25,449
	Historical Annual Growth 2000 to 2011	1.1%	2.4%	1.9%
	Projected Annual Growth 2011 to 2016	0.4%	0.8%	1.2%
POPULATION BY RACE	2011 Estimated White	88.5%	86.9%	85.2%
	2011 Estimated Black or African American	4.9%	6.2%	7.0%
	2011 Estimated Asian & Pacific Islander	1.9%	2.1%	2.6%
	2011 Estimated American Indian & Native Alaskan	0.5%	0.4%	0.5%
	2011 Estimated Other Races	4.2%	4.4%	4.7%
	2011 Estimated Hispanic	6.3%	6.6%	6.7%
INCOME	2011 Estimated Average Household Income	\$ 81,003	\$ 78,999	\$ 78,095
	2011 Estimated Median Household Income	\$ 79,127	\$ 72,237	\$ 67,317
	2011 Estimated Per Capita Income	\$ 30,954	\$ 30,906	\$ 31,716
EDUCATION (AGE 25+)	2011 Elementary	1.4%	1.5%	1.6%
	2011 Some High School	4.2%	4.1%	4.4%
	2011 High School Graduate	26.3%	27.5%	26.8%
	2011 Some College	20.1%	23.9%	23.6%
	2011 Associates Degree Only	11.5%	8.6%	8.1%
	2011 Bachelors Degree Only	26.3%	22.5%	24.7%
	2011 Graduate Degree	10.3%	12.0%	10.8%
BUSINESS	Number of Businesses	89	698	2,028
	Total Number of Employees	941	9,904	27,433
	Employee Population per Business	10.6	14.2	13.5
	Residential Population per Business	86.2	50.1	43.4

This report was produced using data from private and government sources deemed to be reliable. The information herein is provided without representation or warranty.