

EXISTING DRIVE-THRU RESTAURANT

For Sale or Lease



2,400 Sq Ft Restaurant Building with Full Kitchen

8120 Santa Fe Drive, Overland Park, Kansas 66204



Estimated Population
216,641

Average Household Income
\$109,041

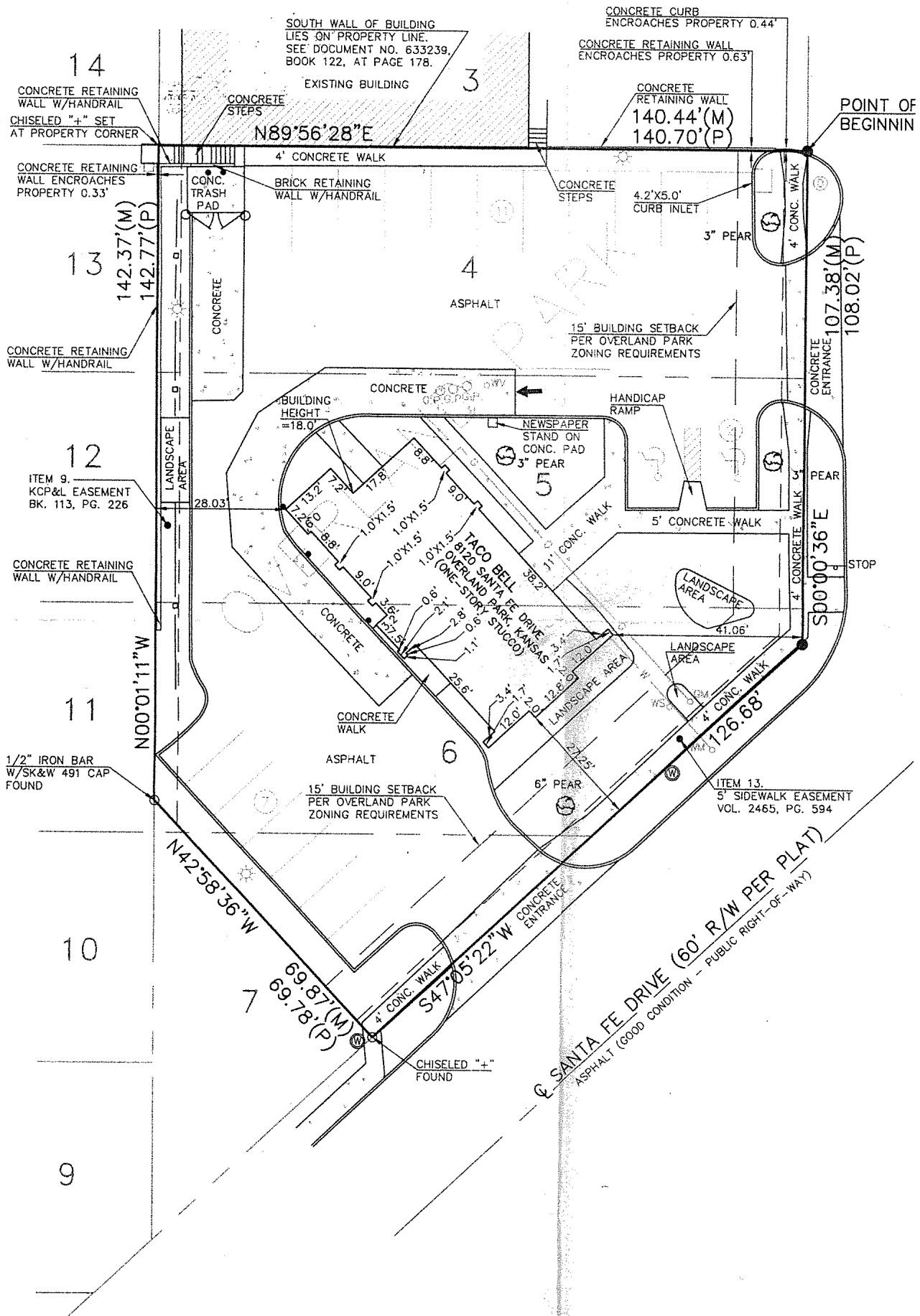
Five Mile Radius

- 2,400 sq ft main floor and 2,400 sq ft basement
- Existing drive-thru restaurant with hood system, grease trap, and walk-in cooler
- Great access and visibility
- Great demographics - densely populated
- Well established community
- Located in the heart of Johnson County

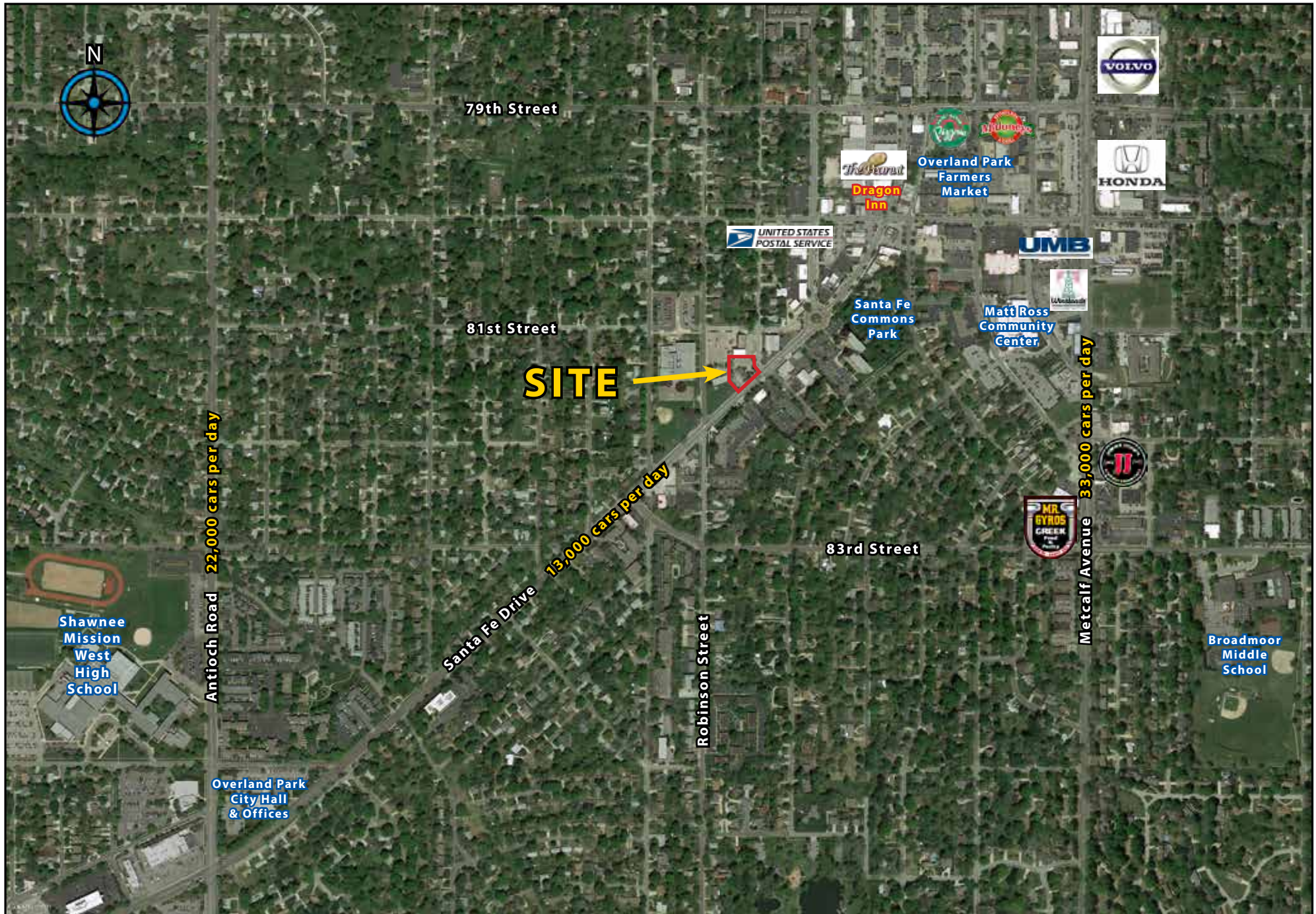
8120 Santa Fe Drive, Overland Park, Kansas 66204



8120 Santa Fe Drive, Overland Park, Kansas 66204



8120 Santa Fe Drive, Overland Park, Kansas 66204

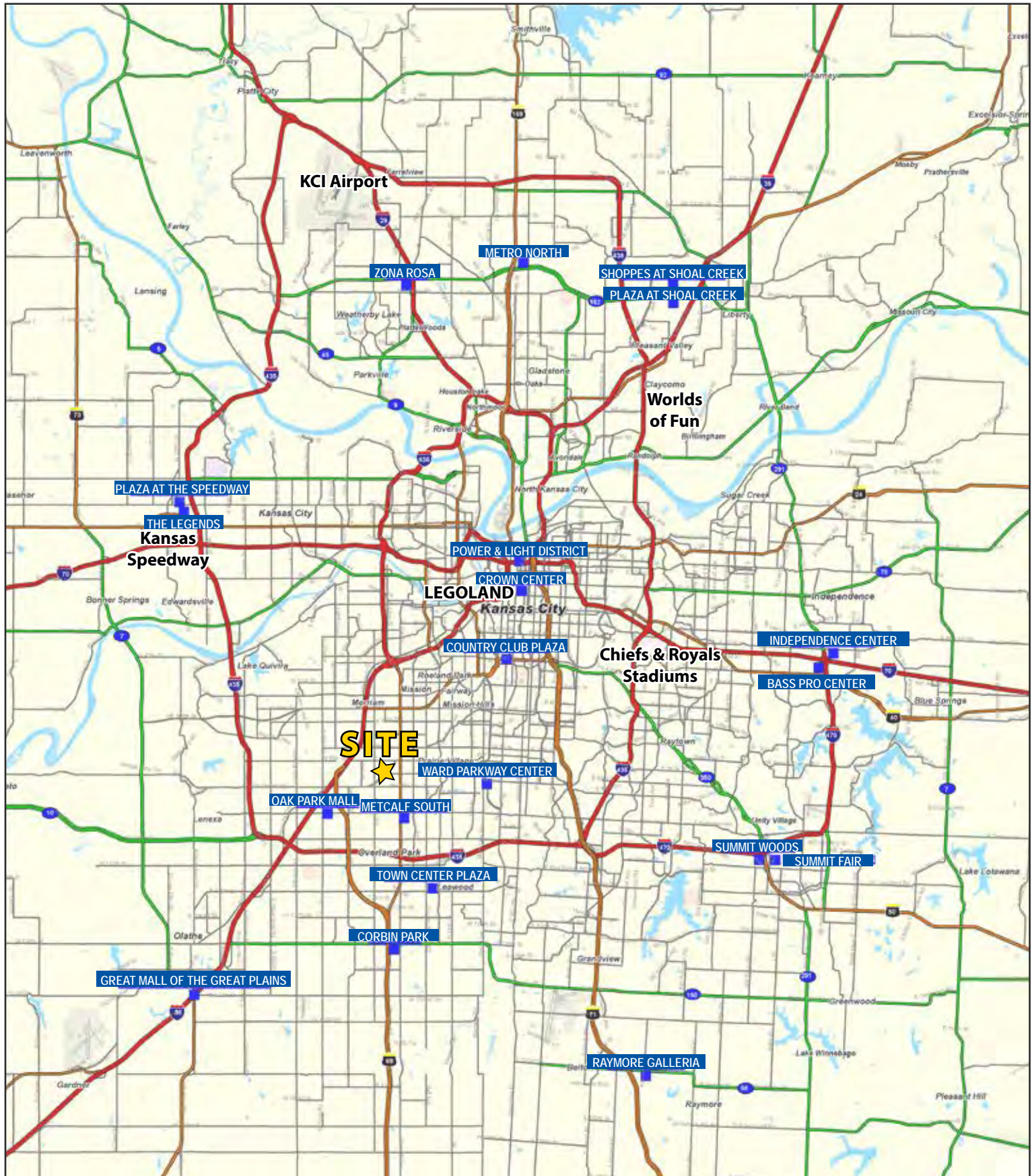


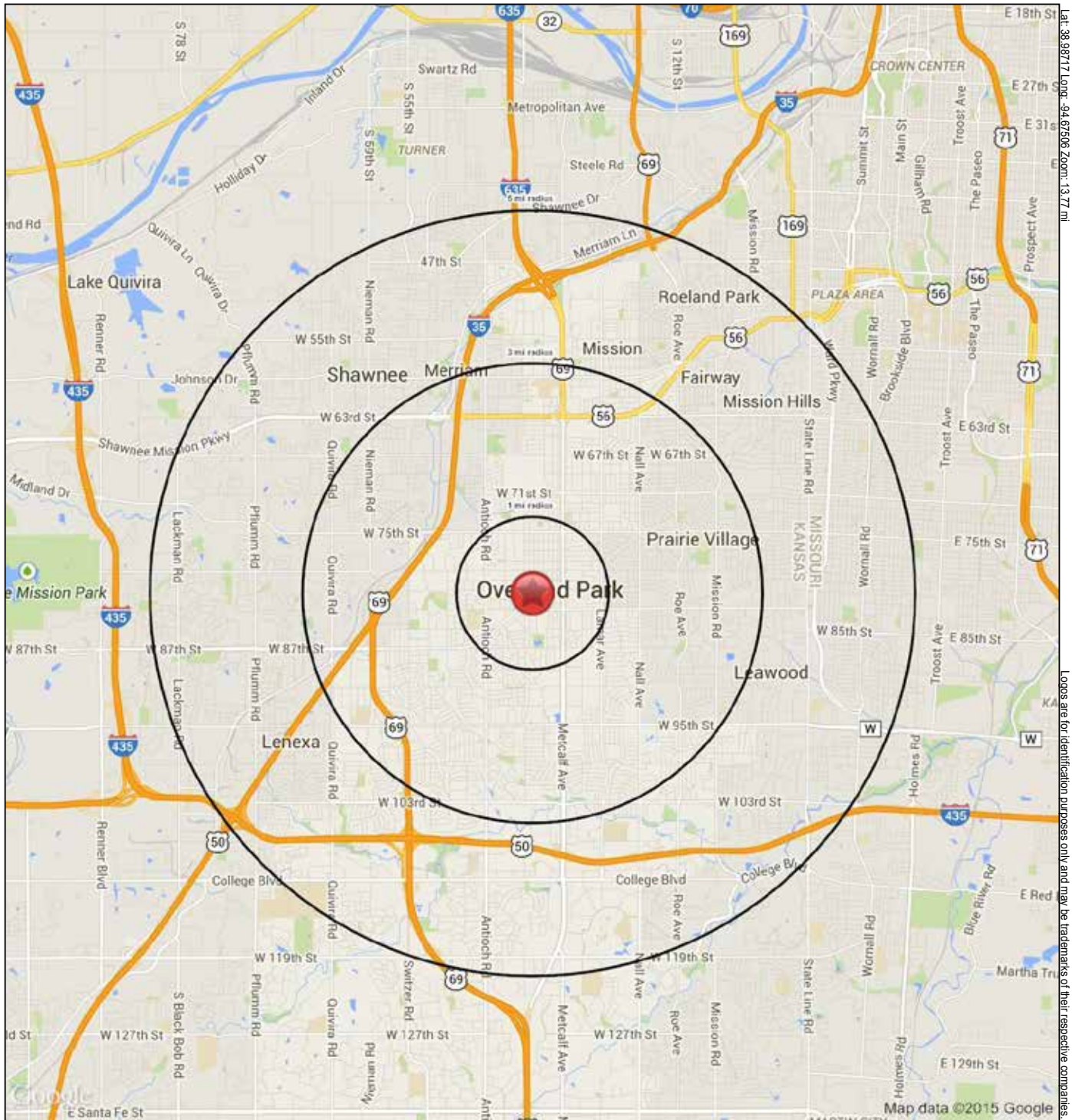
Adjacent New Development to 8120 Santa Fe Drive



Apr 06, 2015 - 9:02am Printed by: Brod.Costa V:\J20060\DAC\Eng\Sheet\J20060-SMTS-JCPA-SITE.dwg Layout: Layout2







8120 Santa Fe Drive
Overland Park, KS 66204

February 2015

This map was produced using data from private and government sources deemed to be reliable. The information herein is provided without representation or warranty.

SUMMARY PROFILE

2000-2010 Census, 2014 Estimates with 2019 Projections

Calculated using Proportional Block Groups

Lat/Lon: 38.9815/-94.6751

RS1

8120 Santa Fe Drive

Overland Park, KS 66204

1 mi radius 3 mi radius 5 mi radius

POPULATION	2014 Estimated Population	12,636	102,403	257,494
	2019 Projected Population	13,133	106,453	266,857
	2010 Census Population	12,354	100,111	251,824
	2000 Census Population	13,066	102,784	256,699
	Projected Annual Growth 2014 to 2019	0.8%	0.8%	0.7%
	Historical Annual Growth 2000 to 2014	-0.2%	-	-
	2014 Median Age	38.7	39.6	40.1
HOUSEHOLDS	2014 Estimated Households	5,971	46,800	115,594
	2019 Projected Households	6,288	49,286	121,352
	2010 Census Households	5,747	45,052	111,350
	2000 Census Households	6,019	45,698	110,669
	Projected Annual Growth 2014 to 2019	1.1%	1.1%	1.0%
	Historical Annual Growth 2000 to 2014	-0.1%	0.2%	0.3%
RACE AND ETHNICITY	2014 Estimated White	84.0%	85.1%	85.7%
	2014 Estimated Black or African American	4.4%	5.3%	5.3%
	2014 Estimated Asian or Pacific Islander	2.7%	2.6%	3.0%
	2014 Estimated American Indian or Native Alaskan	0.6%	0.4%	0.4%
	2014 Estimated Other Races	8.3%	6.6%	5.7%
	2014 Estimated Hispanic	13.4%	10.5%	8.9%
INCOME	2014 Estimated Average Household Income	\$60,134	\$74,723	\$86,259
	2014 Estimated Median Household Income	\$52,888	\$63,220	\$70,814
	2014 Estimated Per Capita Income	\$28,486	\$34,191	\$38,783
EDUCATION (AGE 25+)	2014 Estimated Elementary (Grade Level 0 to 8)	4.3%	2.4%	2.3%
	2014 Estimated Some High School (Grade Level 9 to 11)	3.8%	3.4%	3.3%
	2014 Estimated High School Graduate	21.3%	17.8%	17.4%
	2014 Estimated Some College	24.8%	22.6%	21.6%
	2014 Estimated Associates Degree Only	8.6%	7.0%	6.4%
	2014 Estimated Bachelors Degree Only	24.1%	30.2%	30.6%
	2014 Estimated Graduate Degree	13.1%	16.7%	18.5%
BUSINESS	2014 Estimated Total Businesses	686	5,982	16,268
	2014 Estimated Total Employees	6,863	73,660	209,675
	2014 Estimated Employee Population per Business	10.0	12.3	12.9
	2014 Estimated Residential Population per Business	18.4	17.1	15.8

This report was produced using data from private and government sources deemed to be reliable. The information herein is provided without representation or warranty.