

**FOR LEASE**  
**Premier Retail & Restaurant Site**  
**Next to Advance Auto**



**7,300 Sq Ft Available - Will Divide**  
**5360 Johnson Drive, Mission, Kansas**



Estimated Population  
**269,363**

Average Household Income  
**\$64,349**

Five Mile Radius

- Across from Mission Mart Shopping Center
- 1/2 block from The Gateway - proposed mixed-use development
- One minute from Shawnee Mission Parkway, five minutes from I-35, and eight minutes from the Country Club Plaza
- Johnson Drive carries over 15,000 cars per day

**BLOCK & COMPANY, INC., Realtors** 816.753.6000  
In the Skelly Building on the Country Club Plaza  
605 West 47th Street, Suite 200, Kansas City, Missouri 64112

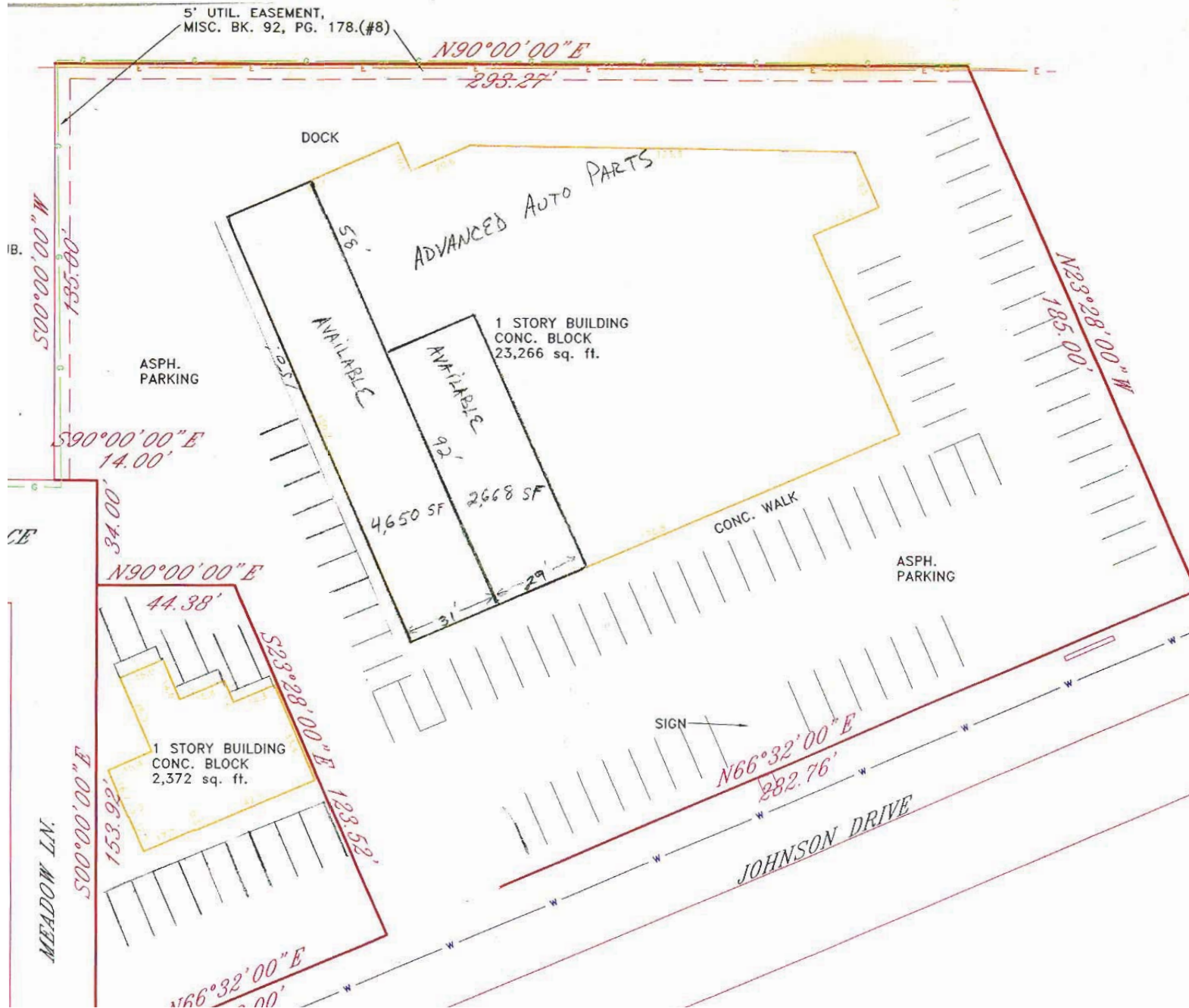
For Information Contact:

**Tony DeTommaso**  
816.412.7308  
tdetomasso@blockandco.com

**David Block**  
816.412.7400  
dblock@blockandco.com



# 5360 Johnson Drive, Mission, Kansas



Lat: 39.0232 Lon: -94.6464 Zoom: 11.01 mi Logos are for identification purposes only and may be trademarks of their respective companies.



©2009, SITES USA Inc., Chandler, AZ (480) 491-1112. All Rights Reserved.

## 5360 Johnson Drive Mission, Kansas

February 2009

This map was produced using data from private and government sources deemed to be reliable. The information herein is provided without representation or warranty.



# SUMMARY DEMOGRAPHIC PROFILE

1990 - 2000 Census, 2006 Estimates & 2011 Projections

Calculated using Proportional Block Groups

Lat/Lon: 39.023195/-94.646363

February 2009

RS1

5360 Johnson Drive Mission, Kansas		1.00 mi radius	3.00 mi radius	5.00 mi radius
<b>POPULATION</b>	2006 Estimated Population	11,515	94,660	269,363
	2011 Projected Population	11,698	95,630	269,899
	2000 Census Population	11,443	94,379	270,956
	1990 Census Population	11,897	97,899	284,638
	Historical Annual Growth 1990 to 2006	-0.2%	-0.2%	-0.3%
	Projected Annual Growth 2006 to 2011	0.3%	0.2%	0.0%
	2006 Median Age	40.3	37.5	36.6
<b>HOUSEHOLDS</b>	2006 Estimated Households	5,419	43,324	122,014
	2011 Projected Households	5,545	44,281	123,531
	2000 Census Households	5,351	42,630	121,303
	1990 Census Households	5,264	42,641	123,698
	Historical Annual Growth 1990 to 2006	0.2%	0.1%	-0.1%
	Projected Annual Growth 2006 to 2011	0.5%	0.4%	0.2%
<b>POPULATION BY RACE</b>	2006 Estimated White	94.8%	89.7%	77.8%
	2006 Estimated Black or African American	1.3%	3.6%	13.9%
	2006 Estimated Asian & Pacific Islander	1.3%	2.4%	2.7%
	2006 Estimated American Indian & Native Alaskan	0.3%	0.4%	0.4%
	2006 Estimated Other Races	2.4%	3.8%	5.1%
	2006 Estimated Hispanic	5.7%	10.0%	11.5%
<b>INCOME</b>	2006 Estimated Average Household Income	\$ 70,892	\$ 79,282	\$ 64,349
	2006 Estimated Median Household Income	\$ 62,208	\$ 66,575	\$ 54,190
	2006 Estimated Per Capita Income	\$ 34,382	\$ 36,792	\$ 29,741
<b>EDUCATION (AGE 25+)</b>	2006 Elementary	0.8%	1.3%	1.8%
	2006 Some High School	1.5%	3.3%	4.9%
	2006 High School Graduate	17.9%	17.6%	20.6%
	2006 Some College	19.9%	19.4%	21.5%
	2006 Associates Degree Only	8.5%	8.6%	8.6%
	2006 Bachelors Degree Only	34.6%	31.3%	26.9%
	2006 Graduate Degree	16.8%	18.5%	15.7%
<b>BUSINESS</b>	Number of Businesses	892	4,625	14,657
	Total Number of Employees	8,891	57,282	189,467
	Employee Population per Business	10.0	12.4	12.9
	Residential Population per Business	12.9	20.5	18.4

This report was produced using data from private and government sources deemed to be reliable. The information herein is provided without representation or warranty.