

RUSKIN HEIGHTS SHOPPING CENTER

Retail Space For Lease



1,088 - 13,056 Sq Ft Available
Red Bridge Road & Blue Ridge Boulevard (SWC), Kansas City, Missouri



Estimated Population
123,242

Average Household Income
\$62,508

Five Mile Radius

- Pylon sign
- Join Co-tenants like Dollar General, Title Max, US Post Office, Cash America Pawn, and more
- Excellent visibility and access to Blue Ridge
- Across from Ruskin High School and Stadium, located near 71 Highway
- Center faces Blue Ridge Blvd which carries over 11,600 cars per day
- Minutes from I-435, 71 Highway, and Bannister area

BLOCK & COMPANY, INC., Realtors 816.753.6000
In the Skelly Building on the Country Club Plaza
605 West 47th Street, Suite 200, Kansas City, Missouri 64112

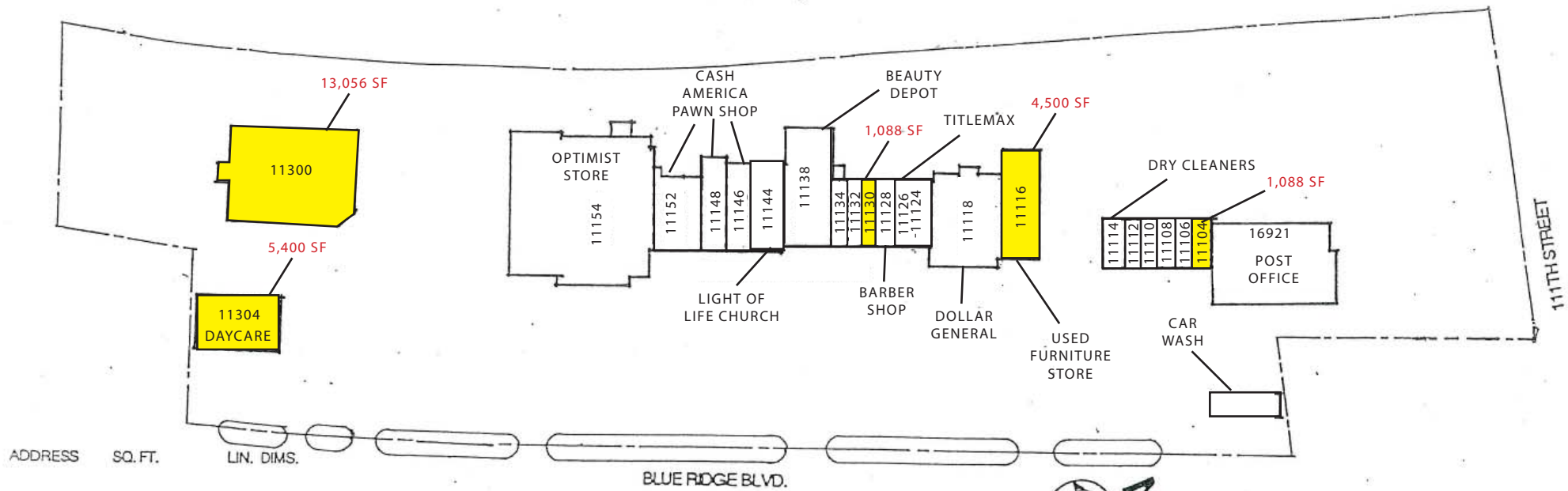
For Information Contact:

Darren Siegel
816.412.7377
dsiegel@blockandco.com

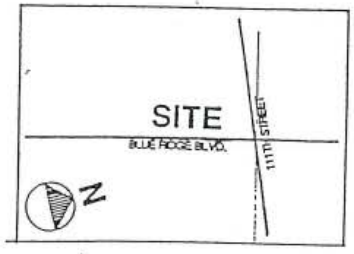
Ruskin Heights Shopping Center
11102-11498 Blue Ridge Boulevard, Kansas City, Missouri



Red Bridge Road & Blue Ridge Boulevard (SWC), Kansas City, Missouri

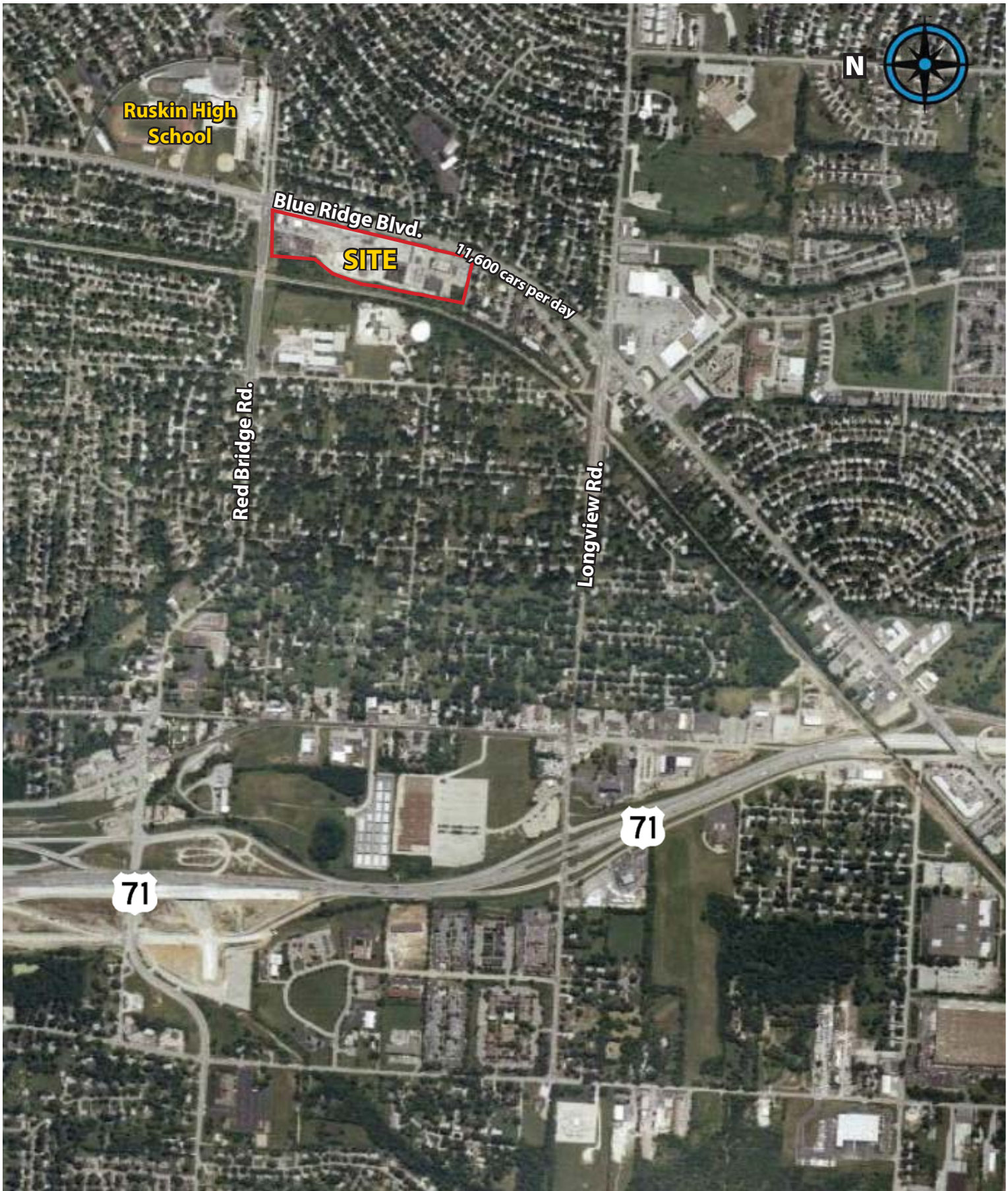


ADDRESS	SQ. FT.	LIN. DIMS.
11104	1000	19'-6" X 53'-6"
11106	625	12'-0" X 53'-6"
11108	1503	24'-6" X 53'-6"
11110	403	12'-6" X 16'-6"
11112	625	16'-6" X 40'-6"
11114	1605	11'-9" X 53'-6"
11116	4500	30'-0" X 53'-6"
11118	6915	41'-0" X 110'-0"
11124	1156	70'-0" X 99'-0"
11126	1292	17'-0" X 68'-0"
11128	1000	19'-0" X 68'-0"
11130	1088	14'-8" X 68'-0"
11132	1156	16'-0" X 68'-0"
11134	1088	17'-0" X 68'-0"
11136	200	17'-6" X 68'-0"
11138	9600	51'-0" X 120'-0"
1145	1710	38'-0" X 90'-6"
1148	2750	19'-0" X 90'-6"
1152	3750	30'-0" X 92'-0"
1154	23,000	50'-0" X 75'-0"
1300	13,056	156'-6" X 147'-0"
1304	5400	95'-0" X 137'-6"
1498	1500	60'-0" X 90'-0"
6921	10,369	

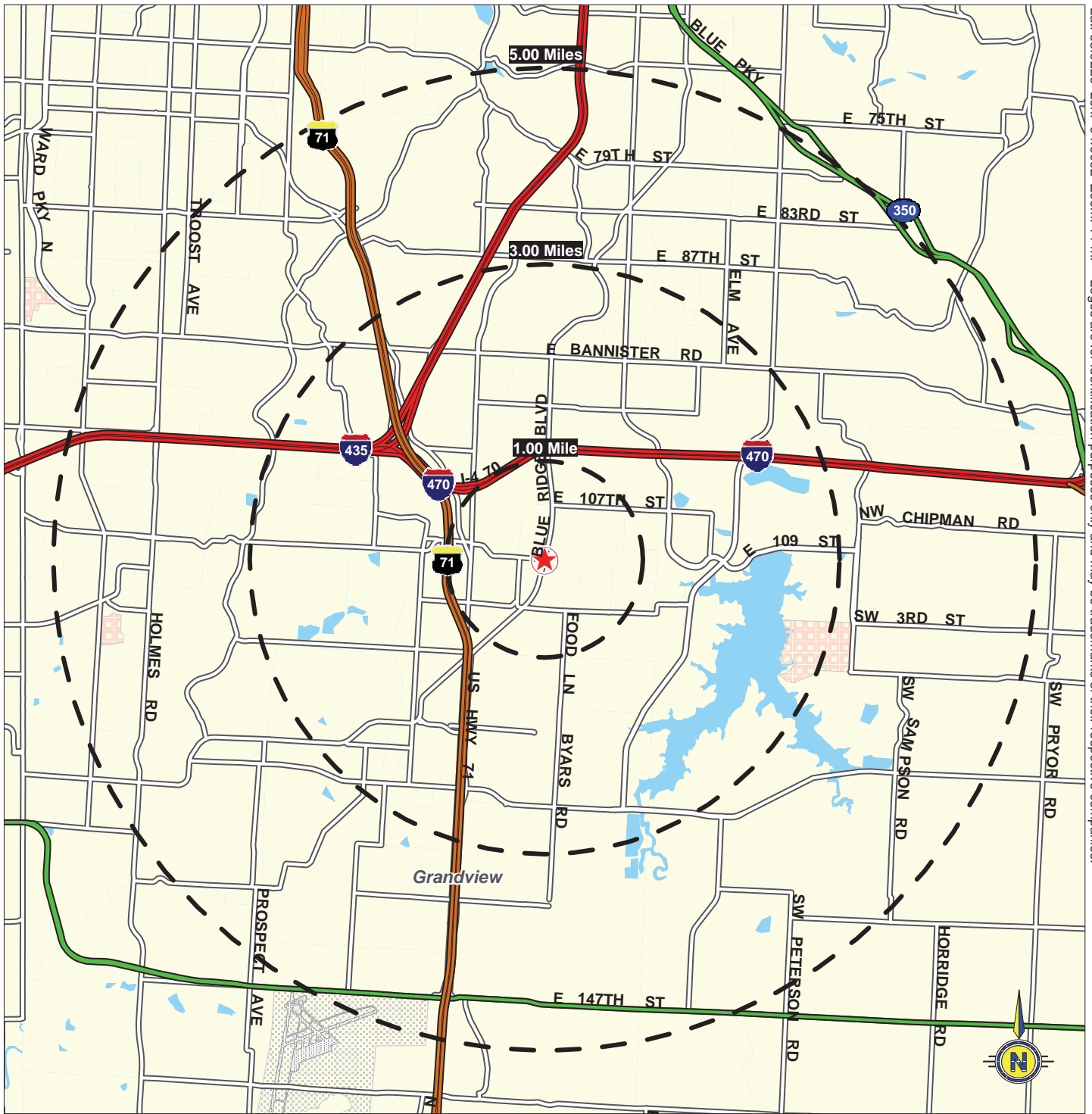


Ruskin Heights Shopping Center

11102-11498 Blue Ridge Boulevard, Kansas City, Missouri



Lat: 38.9226 Lon: -94.5092 Zoom: 1:1 mi Logos are for identification purposes only and may be trademarks of their respective companies.



©2008, SITES USA Inc., Chandler, AZ (480) 491-1112. All Rights Reserved.

11102-11498 Blue Ridge Boulevard
Kansas City, Missouri

January 2008

This map was produced using data from private and government sources deemed to be reliable. The information herein is provided without representation or warranty.

SUMMARY DEMOGRAPHIC PROFILE

1990 - 2000 Census, 2010 Estimates & 2015 Projections

Calculated using Proportional Block Groups

Prepared For

Lat/Lon: 38.92252/-94.50934

October 2011

RS1

Red Bridge Road & Blue Ridge Boulevard Kansas City, Missouri		1.00 mi radius	3.00 mi radius	5.00 mi radius
POPULATION	2010 Estimated Population	10,708	56,728	123,242
	2015 Projected Population	11,143	59,054	129,232
	2000 Census Population	10,452	53,884	113,112
	1990 Census Population	10,675	54,195	110,822
	Historical Annual Growth 1990 to 2010	0.0%	0.2%	0.6%
	Projected Annual Growth 2010 to 2015	0.8%	0.8%	1.0%
	2010 Median Age	32.4	34.8	36.7
HOUSEHOLDS	2010 Estimated Households	3,767	20,965	46,775
	2015 Projected Households	3,757	20,927	46,962
	2000 Census Households	3,895	21,081	46,059
	1990 Census Households	3,923	20,596	43,929
	Historical Annual Growth 1990 to 2010	-0.2%	0.1%	0.3%
	Projected Annual Growth 2010 to 2015	-0.1%	-0.0%	0.1%
POPULATION BY RACE	2010 Estimated White	52.1%	57.0%	65.4%
	2010 Estimated Black or African American	42.3%	37.5%	29.1%
	2010 Estimated Asian & Pacific Islander	1.0%	1.6%	1.8%
	2010 Estimated American Indian & Native Alaskan	0.6%	0.5%	0.5%
	2010 Estimated Other Races	3.9%	3.5%	3.1%
	2010 Estimated Hispanic	6.8%	6.7%	6.5%
INCOME	2010 Estimated Average Household Income	\$ 47,662	\$ 55,092	\$ 62,508
	2010 Estimated Median Household Income	\$ 40,846	\$ 46,589	\$ 52,182
	2010 Estimated Per Capita Income	\$ 16,791	\$ 20,651	\$ 24,054
EDUCATION (AGE 25+)	2010 Elementary	2.5%	2.2%	2.1%
	2010 Some High School	11.0%	7.8%	6.6%
	2010 High School Graduate	34.0%	30.3%	28.6%
	2010 Some College	26.9%	27.0%	25.1%
	2010 Associates Degree Only	7.5%	8.7%	8.7%
	2010 Bachelors Degree Only	12.2%	15.7%	18.0%
	2010 Graduate Degree	5.8%	8.2%	10.9%
BUSINESS	Number of Businesses	238	1,334	2,951
	Total Number of Employees	1,811	16,638	48,543
	Employee Population per Business	7.6	12.5	16.5
	Residential Population per Business	45.0	42.5	41.8

This report was produced using data from private and government sources deemed to be reliable. The information herein is provided without representation or warranty.