

**FOR LEASE**  
Reasonably Priced Office Space



**14,000 Sq Ft Available**  
4224 Port Drive, Lee's Summit, Missouri



Estimated Population  
**88,322**

Average Household Income  
**\$74,145**

Five Mile Radius

- Great location
- Easy access off 291 Highway
- \$10.00 / sq ft

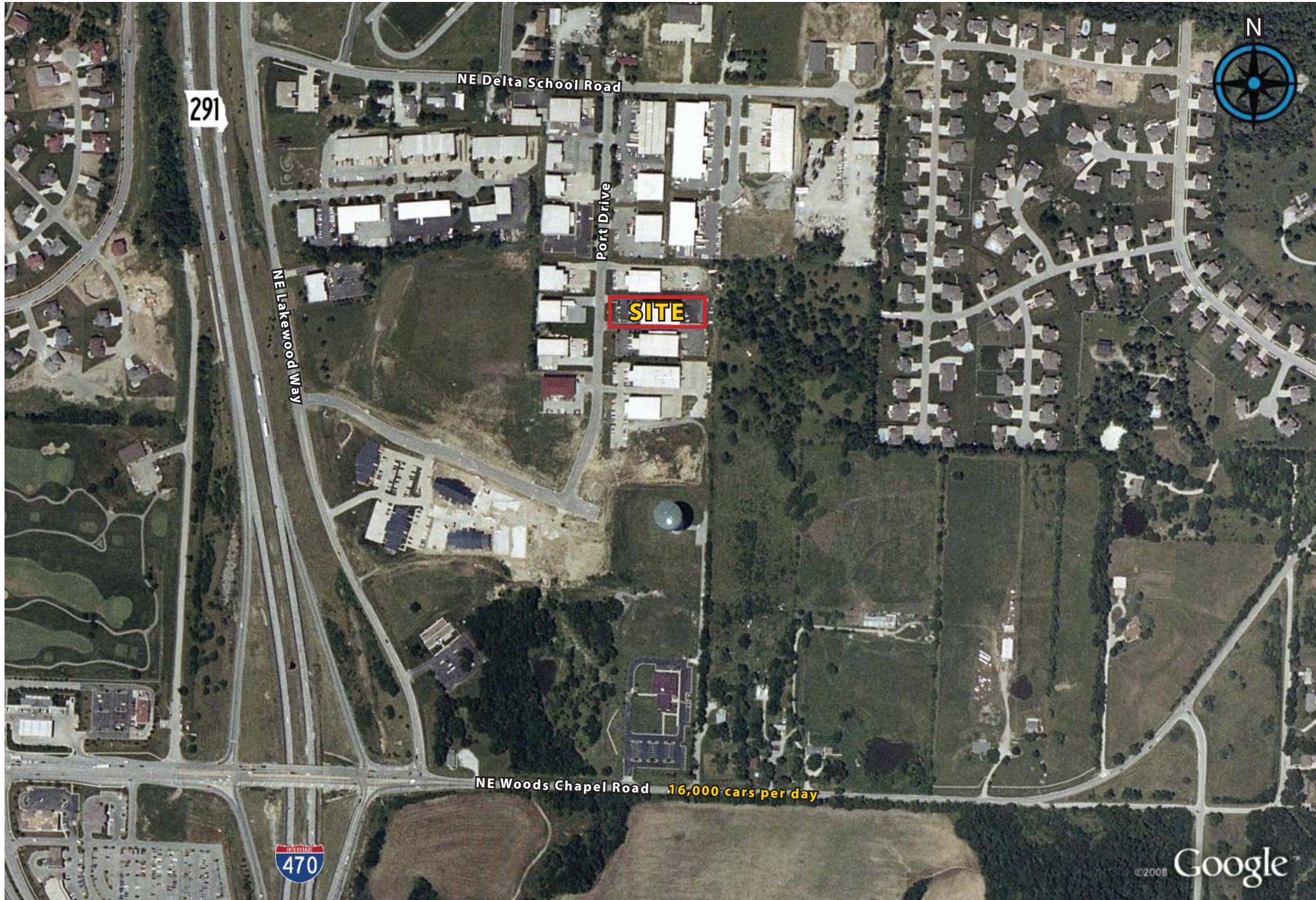
BLOCK & COMPANY, INC., Realtors  
4141 NE Lakewood Way, Suite A  
Lee's Summit, Missouri 64064

816.753.6000

For Information Contact:

William Glasgow  
816.412.7210  
wglasgow@blockandco.com

# 4224 Port Drive, Kansas City, Missouri





©2008, SITES USA Inc., Chandler, AZ (480) 491-1112. All Rights Reserved.

**4224 NE Port Drive**  
**Lee's Summit, Missouri**

November 2008

This map was produced using data from private and government sources deemed to be reliable. The information herein is provided without representation or warranty.

# SUMMARY DEMOGRAPHIC PROFILE

1990 - 2000 Census, 2006 Estimates & 2011 Projections

Calculated using Proportional Block Groups

Lat/Lon: 38.98814/-94.35196

November 2008

RS1

4224 NE Port Drive Lee's Summit, Missouri		1.00 mi radius	3.00 mi radius	5.00 mi radius
<b>POPULATION</b>	2006 Estimated Population	2,542	21,127	88,322
	2011 Projected Population	2,779	22,786	91,680
	2000 Census Population	2,226	18,532	83,617
	1990 Census Population	1,020	12,452	67,000
	Historical Annual Growth 1990 to 2006	9.3%	4.4%	2.0%
	Projected Annual Growth 2006 to 2011	1.9%	1.6%	0.8%
	2006 Median Age	40.6	38.1	36.6
<b>HOUSEHOLDS</b>	2006 Estimated Households	920	7,733	33,429
	2011 Projected Households	1,008	8,379	34,870
	2000 Census Households	803	6,728	31,454
	1990 Census Households	359	4,400	24,262
	Historical Annual Growth 1990 to 2006	9.7%	4.7%	2.4%
	Projected Annual Growth 2006 to 2011	1.9%	1.7%	0.9%
<b>POPULATION BY RACE</b>	2006 Estimated White	89.2%	89.9%	89.9%
	2006 Estimated Black or African American	6.3%	5.9%	5.8%
	2006 Estimated Asian & Pacific Islander	2.2%	1.7%	1.4%
	2006 Estimated American Indian & Native Alaskan	0.1%	0.2%	0.2%
	2006 Estimated Other Races	2.2%	2.4%	2.7%
	2006 Estimated Hispanic	3.3%	3.8%	4.3%
<b>INCOME</b>	2006 Estimated Average Household Income	\$ 143,717	\$ 100,423	\$ 74,145
	2006 Estimated Median Household Income	\$ 106,860	\$ 87,048	\$ 67,587
	2006 Estimated Per Capita Income	\$ 52,334	\$ 37,384	\$ 28,516
<b>EDUCATION (AGE 25+)</b>	2006 Elementary	0.3%	0.6%	0.6%
	2006 Some High School	1.8%	2.8%	3.8%
	2006 High School Graduate	17.9%	20.0%	25.2%
	2006 Some College	22.2%	24.2%	26.4%
	2006 Associates Degree Only	6.3%	8.6%	9.9%
	2006 Bachelors Degree Only	28.6%	26.8%	22.4%
	2006 Graduate Degree	23.0%	17.1%	11.6%
<b>BUSINESS</b>	Number of Businesses	111	734	3,679
	Total Number of Employees	967	6,917	36,580
	Employee Population per Business	8.7	9.4	9.9
	Residential Population per Business	22.9	28.8	24.0

This report was produced using data from private and government sources deemed to be reliable. The information herein is provided without representation or warranty.