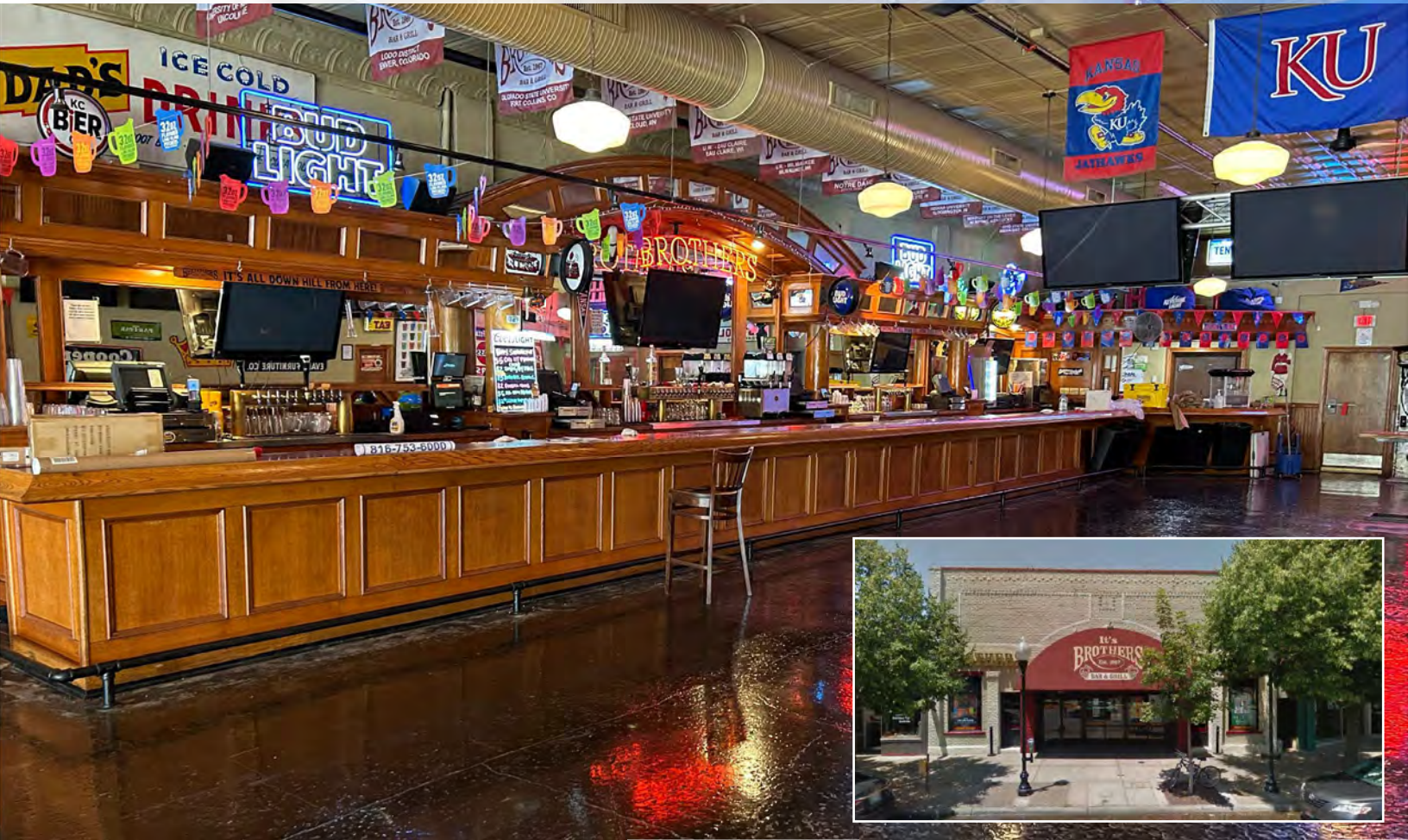




FORMER BROTHER'S BAR & GRILL

BUSINESS FOR SALE | 1105 Massachusetts St., Lawrence, KS



BUSINESS PRICE: \$399,000 | 7,500 SF

DEMOGRAPHICS

	1 mile	3 miles	5 miles
Estimated Population	16,184	67,111	96,316
Avg. Household Income	\$76,932	\$83,356	\$95,091

- Long standing Lawrence bar opportunity
- RARE Liquor License
- Located in the heart of Downtown Mass Street district
- Favorable lease rate
- Seller open to creative financing

 [CLICK HERE TO VIEW MORE LISTING INFORMATION](#)

For More Information Contact:
PAUL MASSALI | 816.412.7409 | pmassali@blockandco.com
PHIL PECK | 816.412.7364 | ppeck@blockandco.com

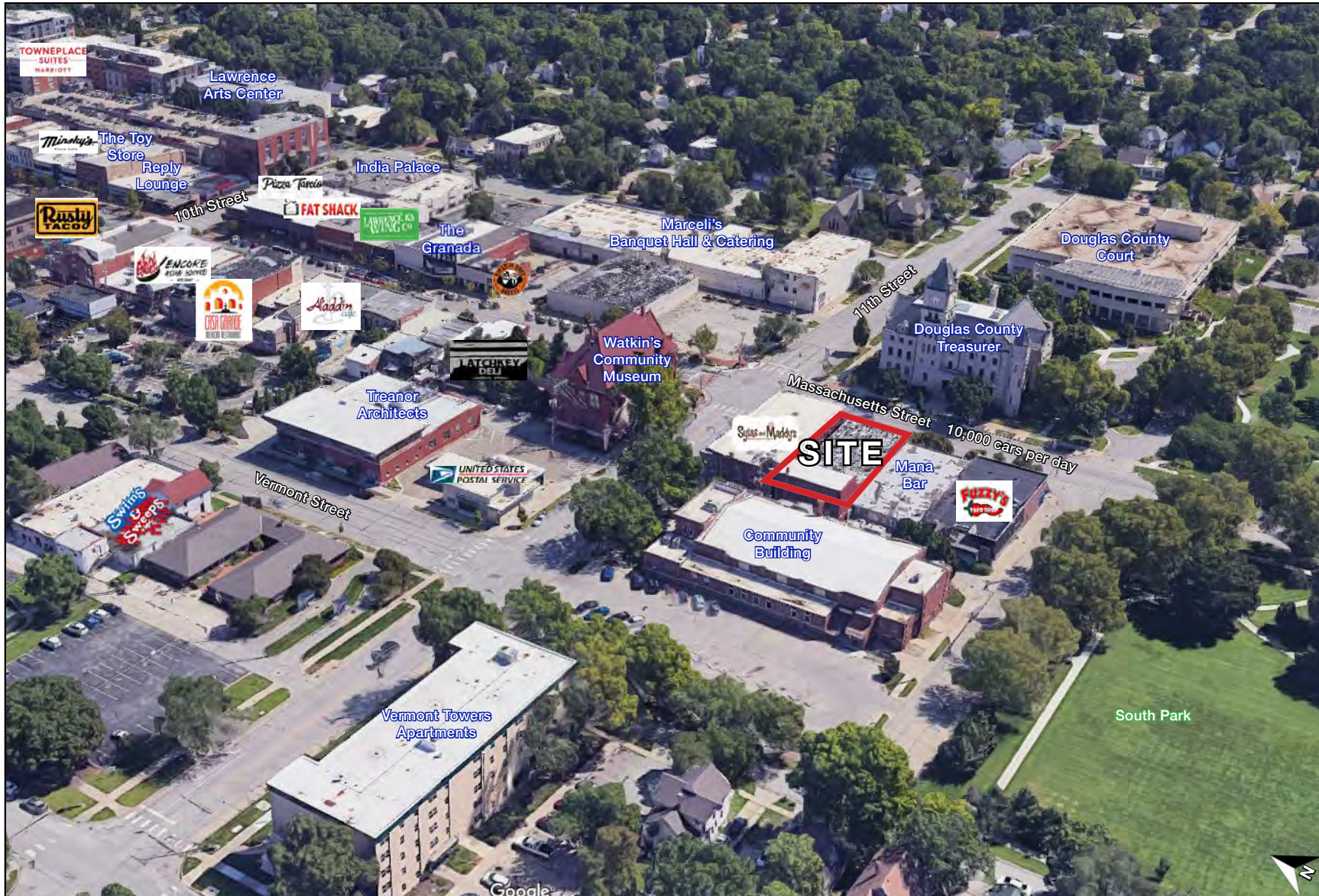




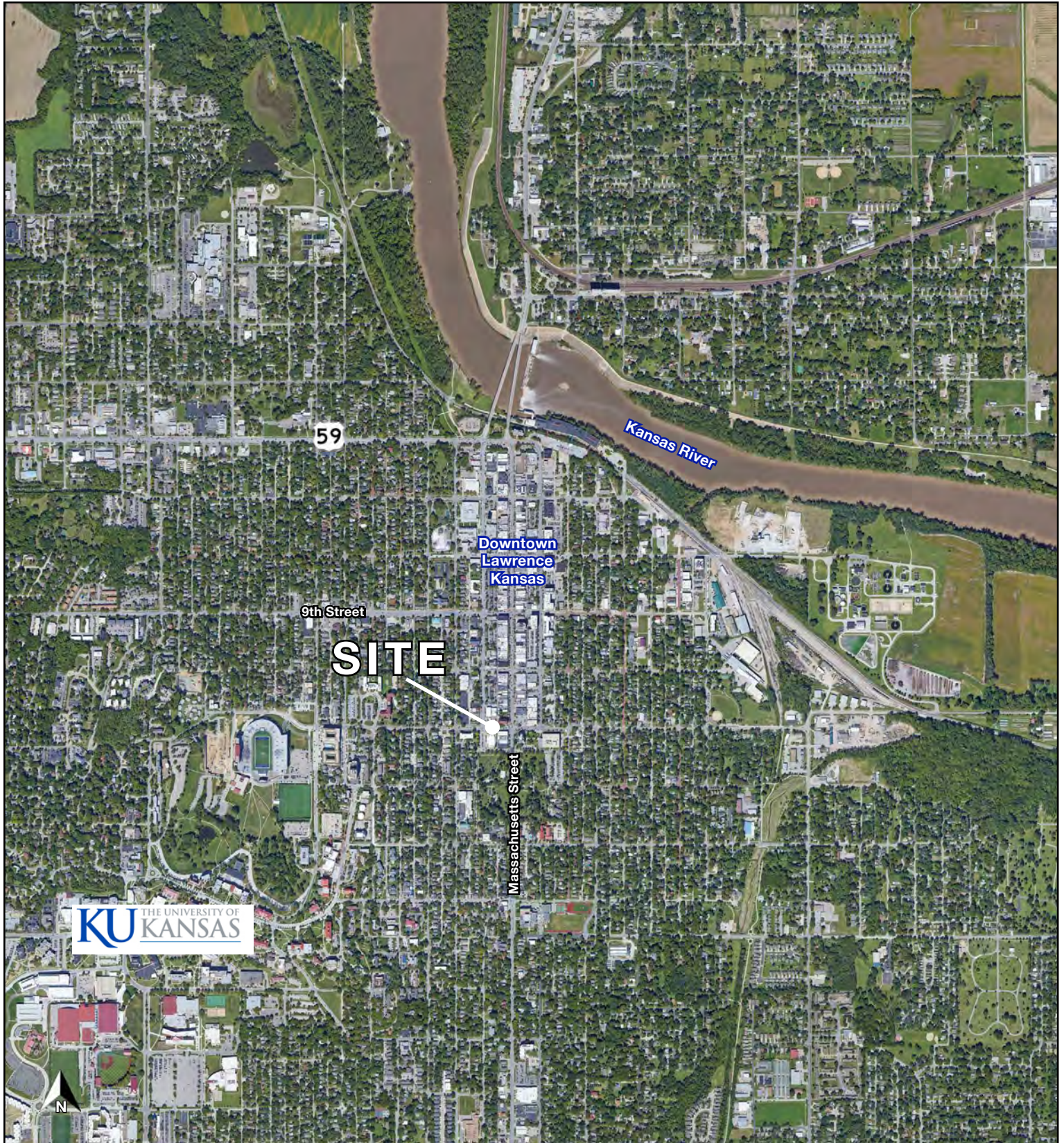
FORMER BROTHER'S BAR & GRILL

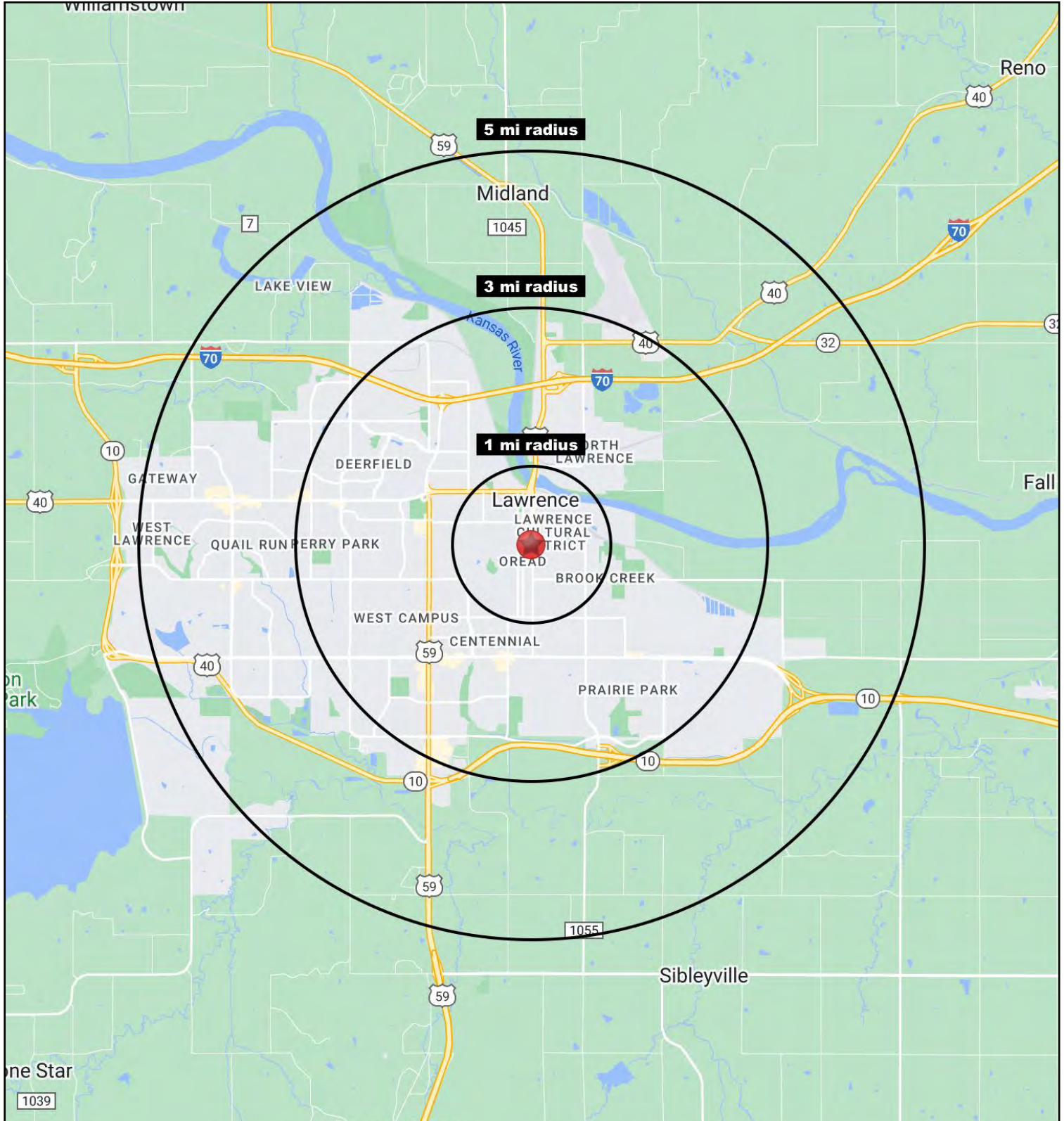
BUSINESS FOR SALE | 1105 Massachusetts St., Lawrence, KS

AERIAL



AERIAL







FORMER BROTHER'S BAR & GRILL

BUSINESS FOR SALE | 1105 Massachusetts St., Lawrence, KS

1105 Massachusetts St Lawrence, KS 66044	1 mi radius	3 mi radius	5 mi radius
Population			
2023 Estimated Population	16,184	67,111	96,316
2028 Projected Population	16,761	68,912	98,473
2020 Census Population	15,979	66,623	95,683
2010 Census Population	15,407	66,770	88,957
Projected Annual Growth 2023 to 2028	0.7%	0.5%	0.4%
Historical Annual Growth 2010 to 2023	0.4%	-	0.6%
2023 Median Age	26.3	29.2	31.0
Households			
2023 Estimated Households	6,719	28,308	40,765
2028 Projected Households	7,005	29,132	41,720
2020 Census Households	6,519	27,729	39,961
2010 Census Households	6,013	26,582	35,501
Projected Annual Growth 2023 to 2028	0.9%	0.6%	0.5%
Historical Annual Growth 2010 to 2023	0.9%	0.5%	1.1%
Race and Ethnicity			
2023 Estimated White	67.0%	69.2%	72.2%
2023 Estimated Black or African American	3.4%	5.5%	5.4%
2023 Estimated Asian or Pacific Islander	21.1%	15.0%	12.4%
2023 Estimated American Indian or Native Alaskan	1.0%	1.6%	1.4%
2023 Estimated Other Races	7.4%	8.8%	8.7%
2023 Estimated Hispanic	6.7%	7.4%	7.1%
Income			
2023 Estimated Average Household Income	\$76,932	\$83,356	\$95,091
2023 Estimated Median Household Income	\$50,680	\$58,669	\$68,760
2023 Estimated Per Capita Income	\$32,978	\$35,815	\$40,727
Education (Age 25+)			
2023 Estimated Elementary (Grade Level 0 to 8)	0.8%	1.0%	0.9%
2023 Estimated Some High School (Grade Level 9 to 11)	2.3%	3.2%	2.8%
2023 Estimated High School Graduate	15.8%	17.7%	16.9%
2023 Estimated Some College	20.0%	18.6%	17.5%
2023 Estimated Associates Degree Only	6.1%	6.2%	6.1%
2023 Estimated Bachelors Degree Only	33.6%	29.9%	29.7%
2023 Estimated Graduate Degree	21.3%	23.2%	26.1%
Business			
2023 Estimated Total Businesses	767	2,415	3,187
2023 Estimated Total Employees	6,482	27,095	34,581
2023 Estimated Employee Population per Business	8.4	11.2	10.8
2023 Estimated Residential Population per Business	21.1	27.8	30.2

©2023. Sites USA. Chandler, Arizona. 480-491-1112 Demographic Source: Applied Geographic Solutions 4/2023. TIGER Geographv - RS1

