



## Freestanding Restaurant For Sale or Lease

### FIRST TIME LISTED FOR SALE!

#### DEMOGRAPHICS

	1 mile	3 miles	5 miles
Estimated Population	10,252	113,638	275,670
Avg. Household Income	\$160,949	\$112,048	\$90,946

- 6,186 sf restaurant space with basement and second floor office
- Located in the Fairway Shops neighborhood center
- Anchored by Hen House Grocery
- Great access and parking
- Excellent exposure to Shawnee Mission Parkway
- Shawnee Mission Pkwy carries over 30,000 CPD



CLICK HERE TO VIEW MORE LISTING INFORMATION

For More Information Contact:

DAVID BLOCK | 816.412.7400 | [dblock@blockandco.com](mailto:dblock@blockandco.com)

ALEX BLOCK | 816.412.7373 | [ablock@blockandco.com](mailto:ablock@blockandco.com)

Exclusive Agents





# Fairway Restaurant For Sale or Lease

## FIRST TIME LISTED FOR SALE!

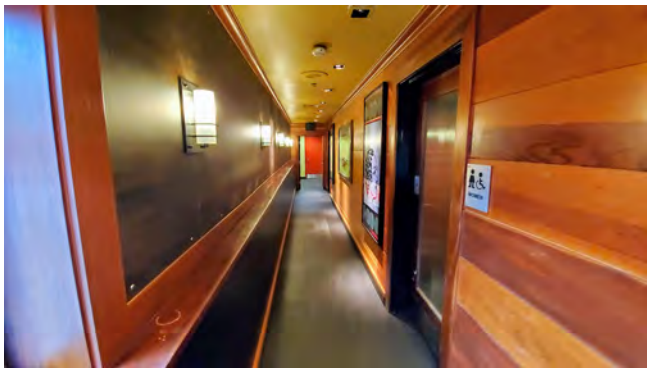
2820 W 53rd Street, Fairway, Kansas

### PHOTOS





### PHOTOS



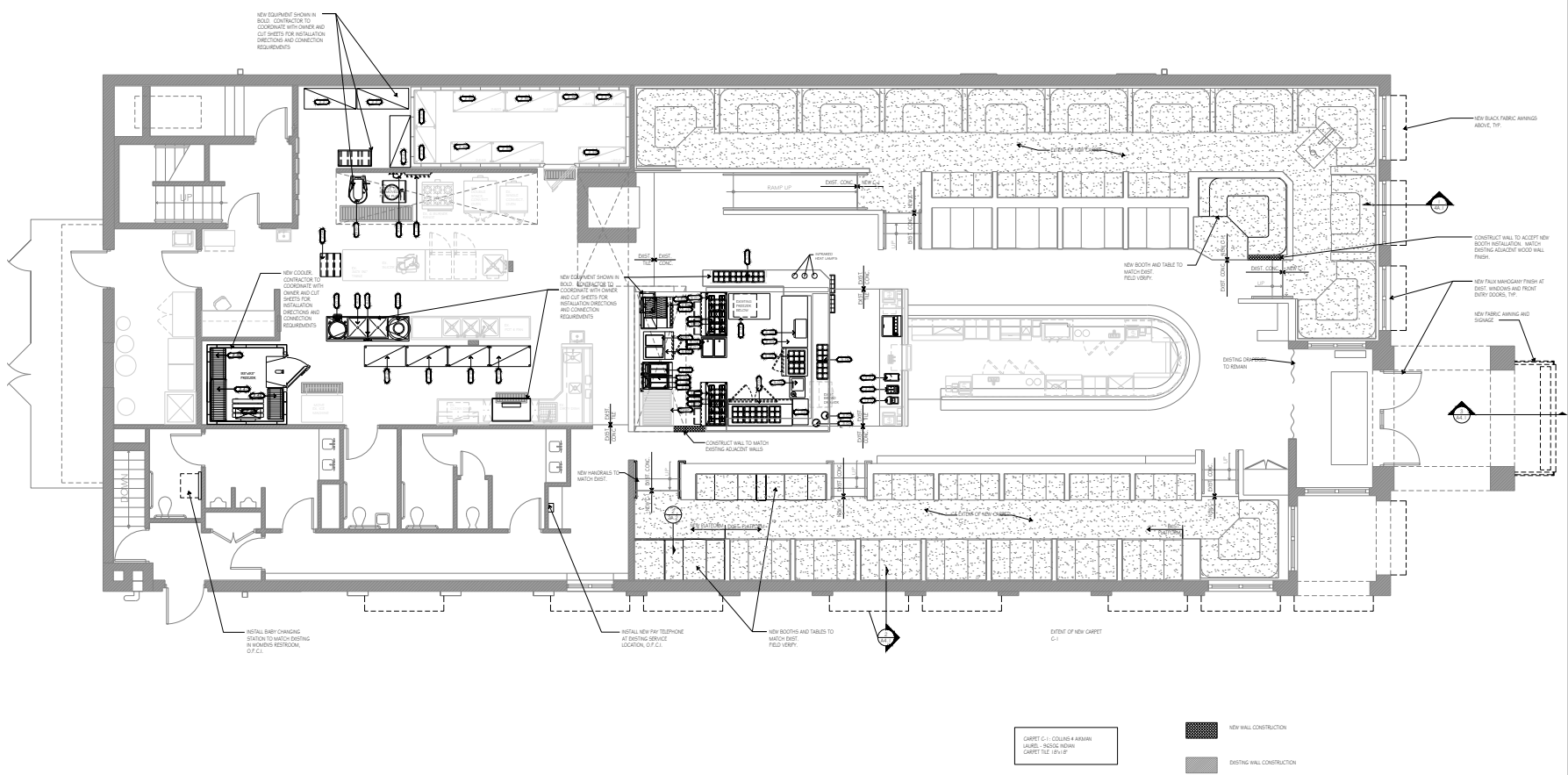
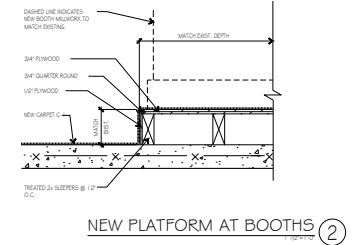


# Fairway Restaurant For Sale or Lease

## FIRST TIME LISTED FOR SALE!

2820 W 53rd Street, Fairway, Kansas

### FLOOR PLAN



All information furnished regarding property for sale or lease is from sources deemed reliable, but no warranty or representation is made as to the accuracy thereof and the same is subject to errors, omissions, changes of prices, rental or other conditions, prior sale or lease or withdrawal without notice.





# Fairway Restaurant For Sale or Lease

## FIRST TIME LISTED FOR SALE!

2820 W 53rd Street, Fairway, Kansas

AERIAL





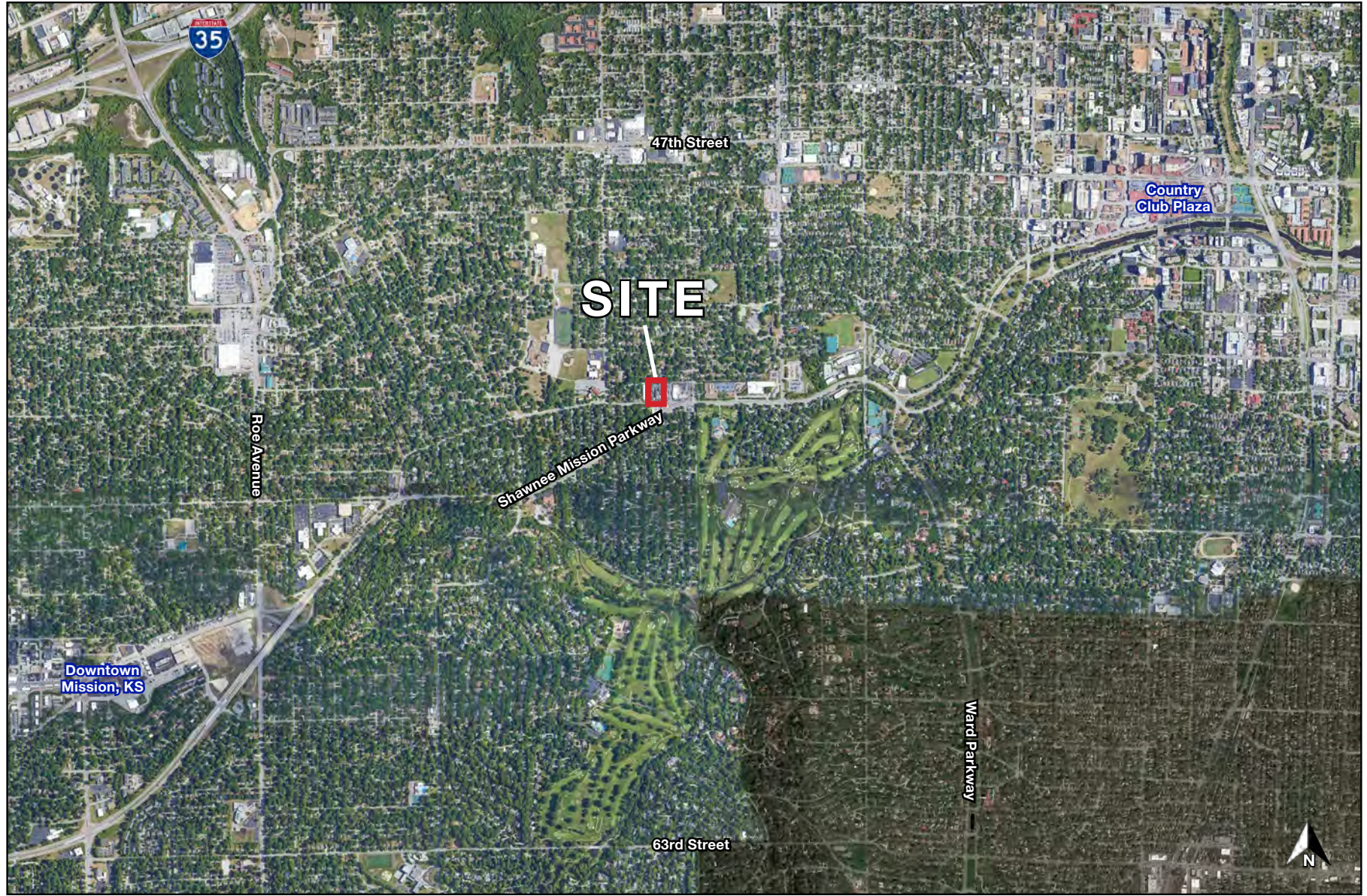


# Fairway Restaurant For Sale or Lease

## FIRST TIME LISTED FOR SALE!

2820 W 53rd Street, Fairway, Kansas

AERIAL



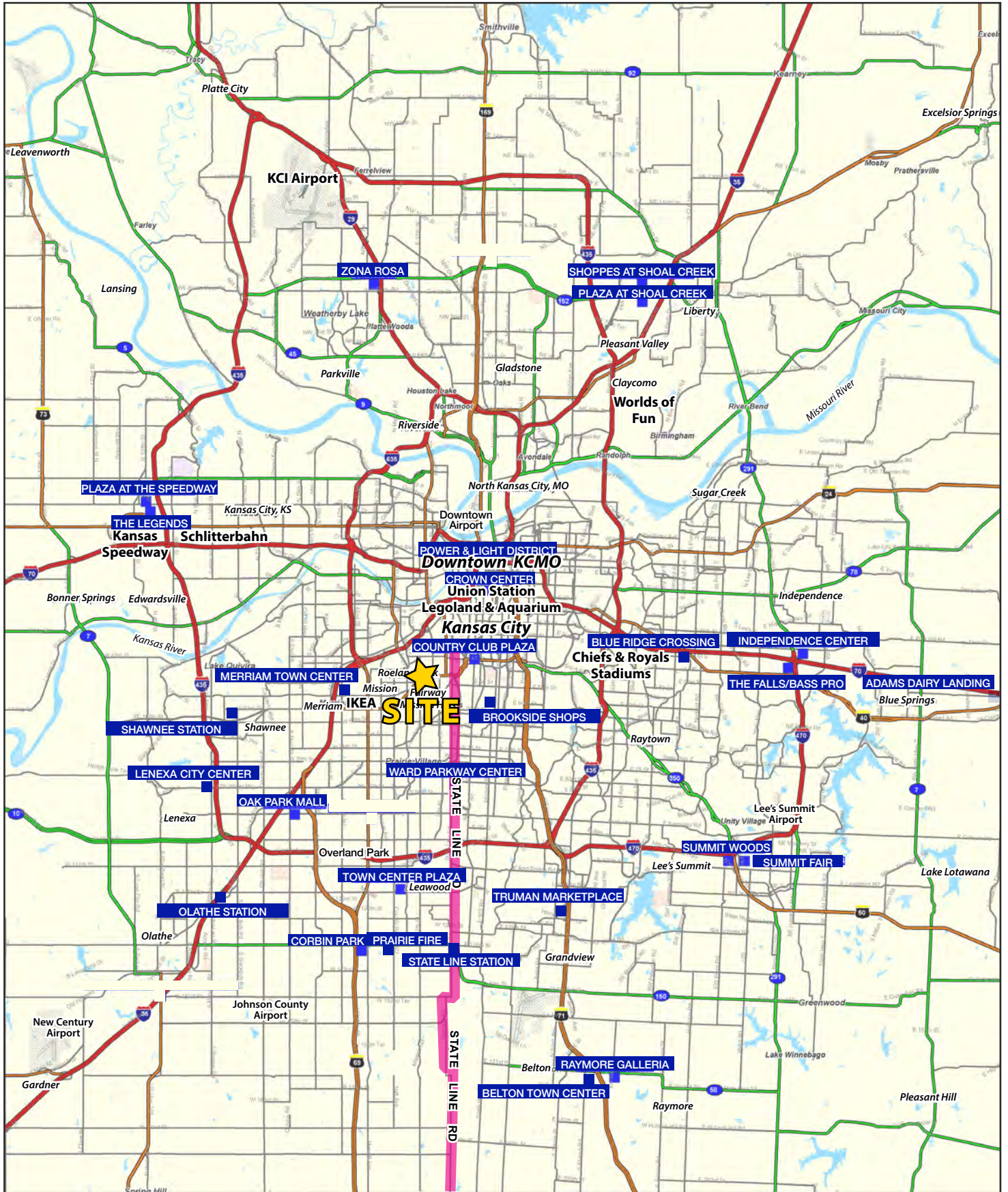




# Fairway Restaurant For Sale or Lease

## FIRST TIME LISTED FOR SALE!

2820 W 53rd Street, Fairway, Kansas



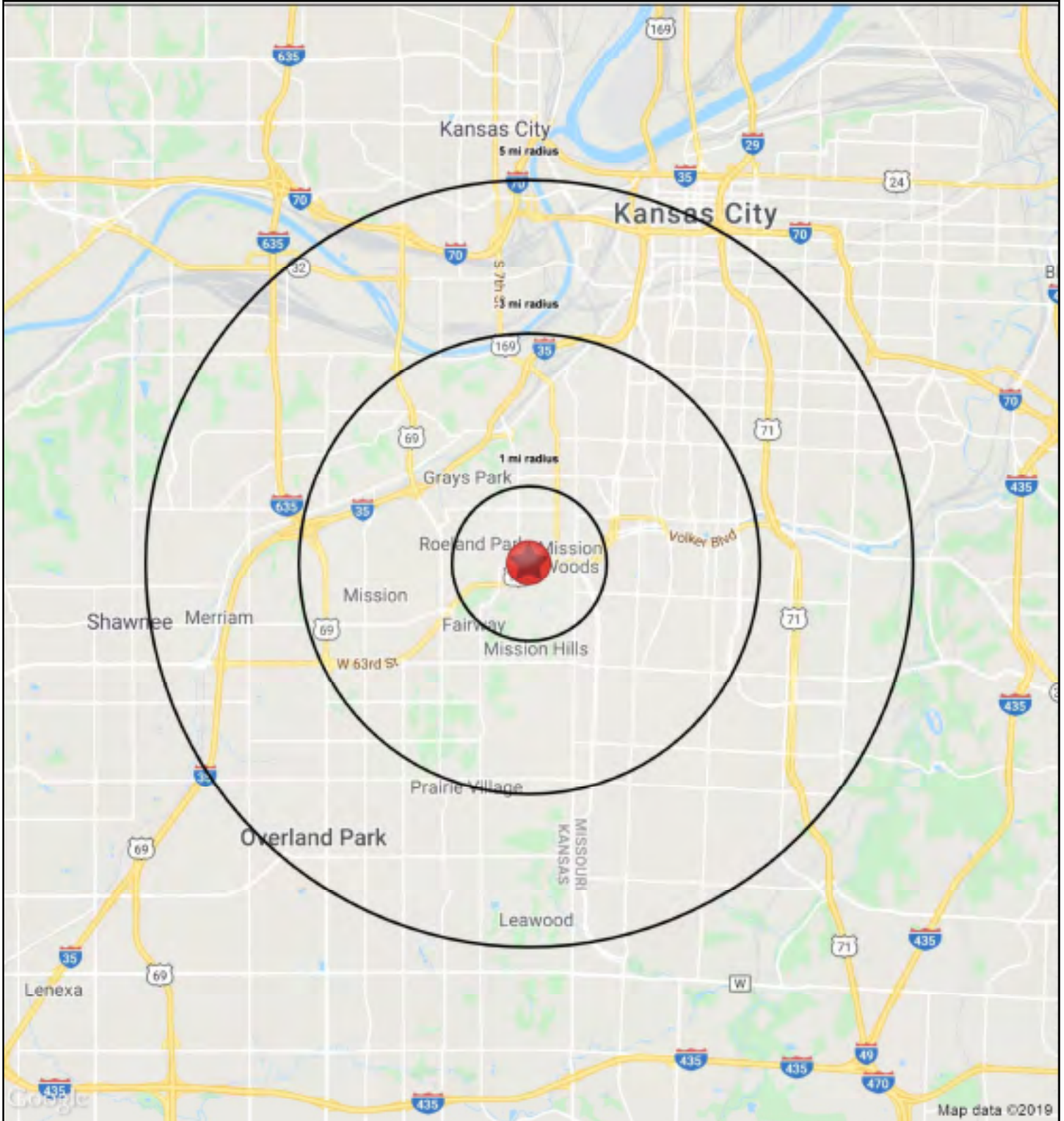




# Fairway Restaurant For Sale or Lease

## FIRST TIME LISTED FOR SALE!

2820 W 53rd Street, Fairway, Kansas







# Fairway Restaurant For Sale or Lease

## FIRST TIME LISTED FOR SALE!

2820 W 53rd Street, Fairway, Kansas

2820 W 53rd St Fairway, KS 66205	1 mi radius	3 mi radius	5 mi radius
<b>Population</b>			
2022 Estimated Population	10,252	113,638	275,670
2027 Projected Population	10,402	115,613	280,927
2020 Census Population	10,271	113,652	273,166
2010 Census Population	9,648	108,724	260,273
Projected Annual Growth 2022 to 2027	0.3%	0.3%	0.4%
Historical Annual Growth 2010 to 2022	0.5%	0.4%	0.5%
2022 Median Age	41.1	36.9	37.1
<b>Households</b>			
2022 Estimated Households	4,512	54,092	123,483
2027 Projected Households	4,640	55,057	125,820
2020 Census Households	4,509	53,773	122,457
2010 Census Households	4,348	51,601	115,755
Projected Annual Growth 2022 to 2027	0.6%	0.4%	0.4%
Historical Annual Growth 2010 to 2022	0.3%	0.4%	0.6%
<b>Race and Ethnicity</b>			
2022 Estimated White	86.9%	75.8%	62.6%
2022 Estimated Black or African American	2.1%	9.9%	21.6%
2022 Estimated Asian or Pacific Islander	2.5%	4.2%	3.0%
2022 Estimated American Indian or Native Alaskan	0.2%	0.4%	0.5%
2022 Estimated Other Races	8.3%	9.7%	12.3%
2022 Estimated Hispanic	8.4%	10.3%	13.5%
<b>Income</b>			
2022 Estimated Average Household Income	\$160,949	\$112,048	\$90,946
2022 Estimated Median Household Income	\$110,740	\$80,656	\$69,668
2022 Estimated Per Capita Income	\$70,842	\$53,507	\$40,955
<b>Education (Age 25+)</b>			
2022 Estimated Elementary (Grade Level 0 to 8)	1.1%	1.7%	3.4%
2022 Estimated Some High School (Grade Level 9 to 11)	1.1%	2.7%	5.1%
2022 Estimated High School Graduate	10.2%	13.5%	20.9%
2022 Estimated Some College	13.8%	15.1%	17.8%
2022 Estimated Associates Degree Only	5.5%	5.1%	6.2%
2022 Estimated Bachelors Degree Only	36.2%	35.1%	27.3%
2022 Estimated Graduate Degree	32.1%	26.7%	19.3%
<b>Business</b>			
2022 Estimated Total Businesses	377	6,141	14,118
2022 Estimated Total Employees	3,790	112,106	232,696
2022 Estimated Employee Population per Business	10.0	18.3	16.5
2022 Estimated Residential Population per Business	27.2	18.5	19.5

©2023, Sites USA, Chandler, Arizona, 480-491-1112 Demographic Source: Applied Geographic Solutions 11/2022, TIGER Geography - RS1

