



MISSION, KS OFFICE BUILDING

5845 Horton St., Mission, KS | A Kansas City Suburb



LEASE RATE: \$20/SF | 320-1,050 SF AVAILABLE

DEMOGRAPHICS

	1 mile	3 miles	5 miles
Estimated Population	11,426	88,337	261,775
Avg. Household Income	\$105,120	\$129,223	\$121,454

- Small office suites available - FOR LEASE
- Located off main Johnson Drive corridor
- Easy highway access
- Full service lease
- Surrounded by numerous retailers and restaurants

 [CLICK HERE TO VIEW MORE LISTING INFORMATION](#)

For More Information Contact:

PHIL PECK, CCIM | 816.412.7364 | ppeck@blockandco.com

Exclusive Agent



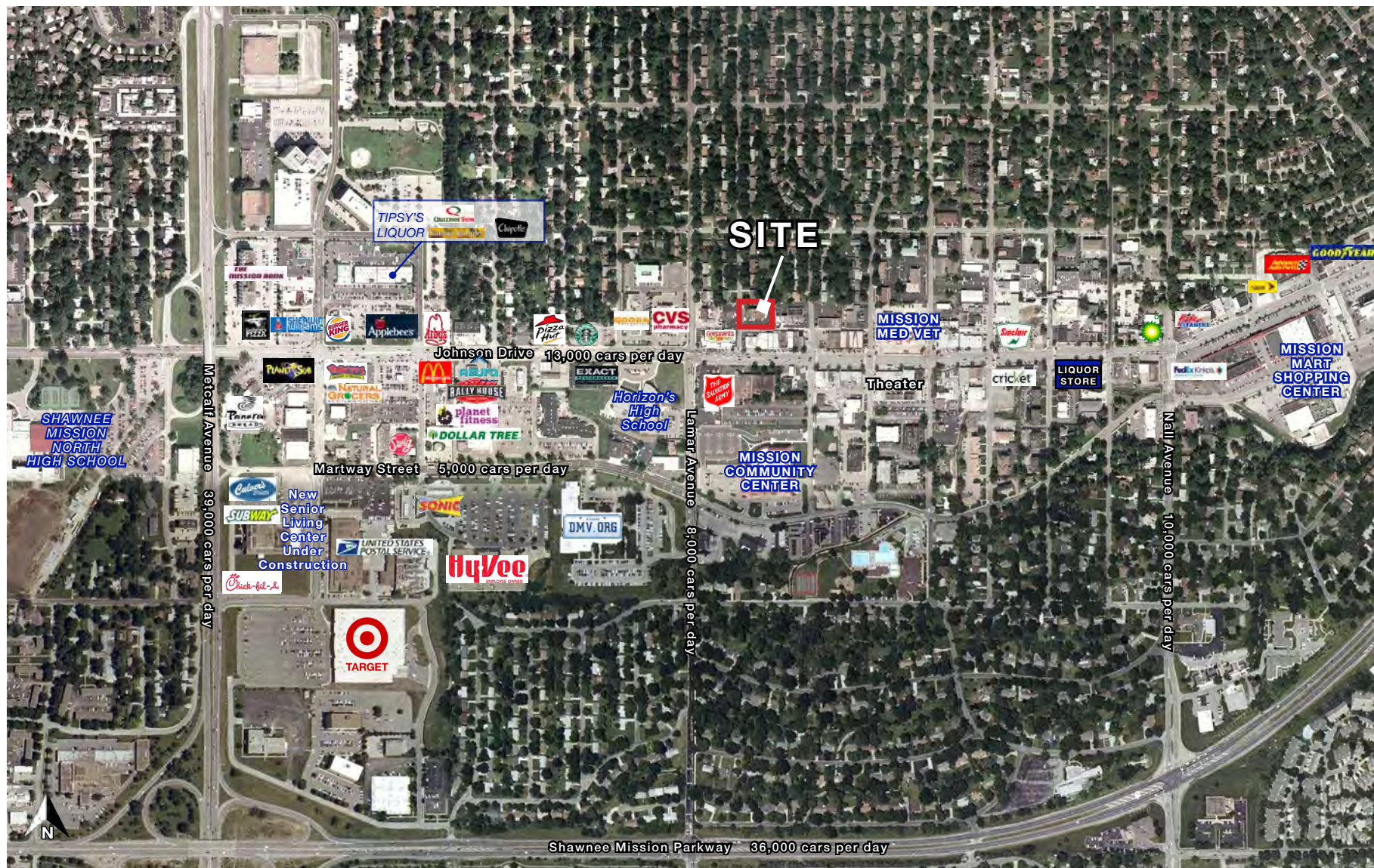


MISSION, KS OFFICE BUILDING

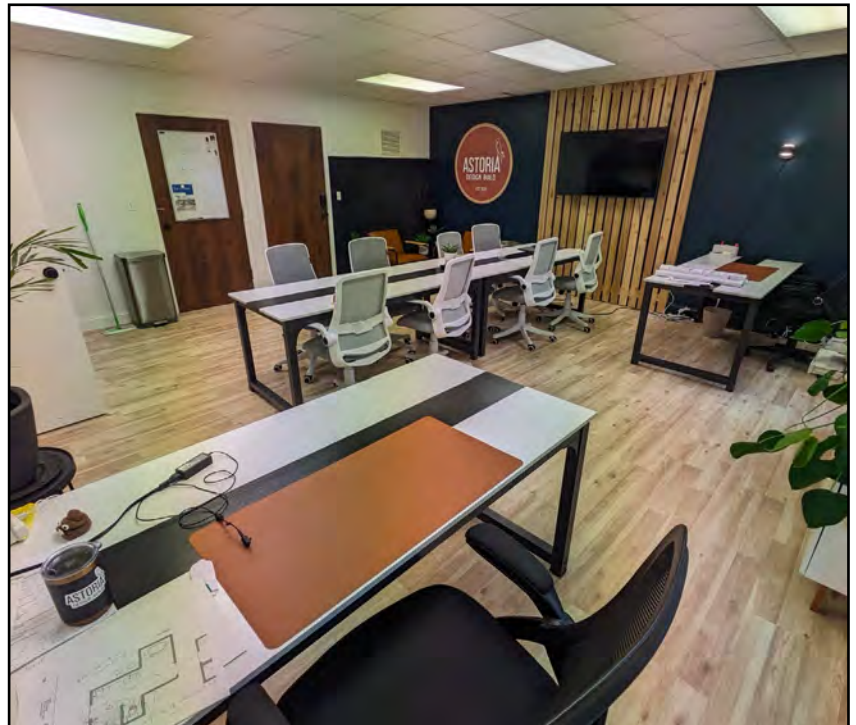
5845 Horton St., Mission, KS | A Kansas City Suburb

200-710 SF OFFICE
SUITES AVAILABLE
FOR LEASE

AERIAL



PHOTOS





MISSION, KS OFFICE BUILDING

5845 Horton St., Mission, KS | A Kansas City Suburb

200-710 SF OFFICE SUITES AVAILABLE FOR LEASE

UPPER LEVEL FLOOR PLAN



	PROJECT HORTON OFFICES	PROJECT NUMBER 1902.1	<small>© 2015 Luxe Architects, LLC. All rights reserved. No part of this document may be reproduced or stored in any form without the prior written authorization of Luxe Architects, LLC.</small>
	5845 HORTON MISSION, KS 66202	SHEET AUTHOR Author	SHEET NUMBER PE13

SCALE: 3/16" = 1'-0"
UPPER LEVEL

LUXE ARCHITECTS/CSO/01



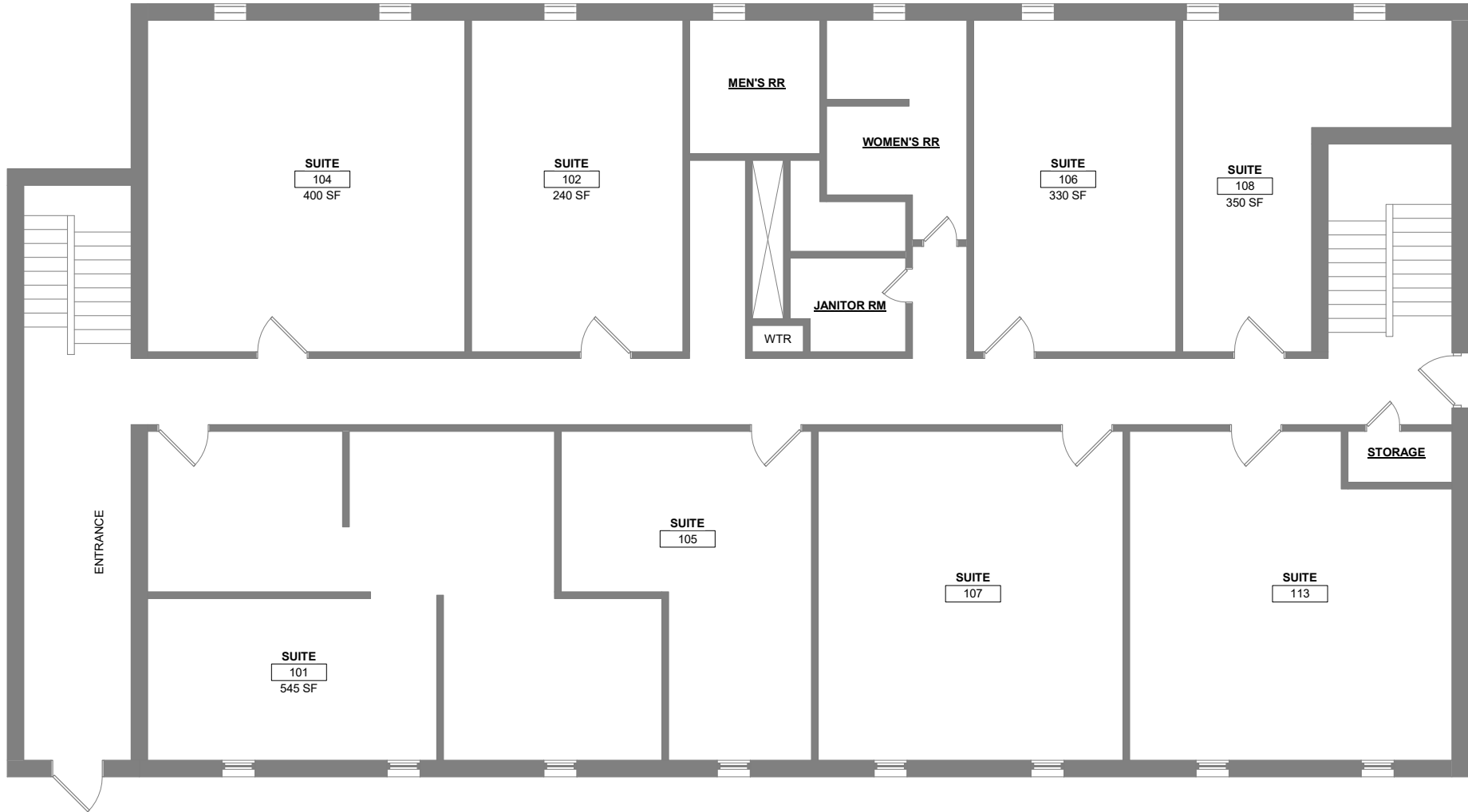


MISSION, KS OFFICE BUILDING

5845 Horton St., Mission, KS | A Kansas City Suburb

200-710 SF OFFICE SUITES AVAILABLE FOR LEASE

MAIN LEVEL FLOOR PLAN



	PROJECT HORTON OFFICES	PROJECT NUMBER 1902.1	<small>© 2015 Luxe Architects, LLC. All rights reserved. No part of this document may be reproduced or utilized in any form without the prior written authorization of Luxe Architects, LLC.</small>
	5845 HORTON MISSION, KS 66202	SHEET AUTHOR P.J.P.	SHEET NUMBER PE12

SCALE: 3/16" = 1'-0"
MAIN LEVEL

LUXEARCHITECTS.COM





MISSION, KS OFFICE BUILDING

5845 Horton St., Mission, KS | A Kansas City Suburb

200-710 SF OFFICE SUITES AVAILABLE FOR LEASE

LOWER LEVEL FLOOR PLAN



	PROJECT HORTON OFFICES 5845 HORTON MISSION, KS 66202	PROJECT NUMBER 1902-1 <small>©2019 Luxe Architects, LLC. All rights reserved. No part of this document may be reproduced or utilized in any form without the prior written authorization of Luxe Architects, LLC.</small>	LUXEARCHITECTS.COM
	SHEET AUTHOR Author	SHEET NUMBER PE11	

SCALE: 3/16" = 1'-0"
LOWER LEVEL



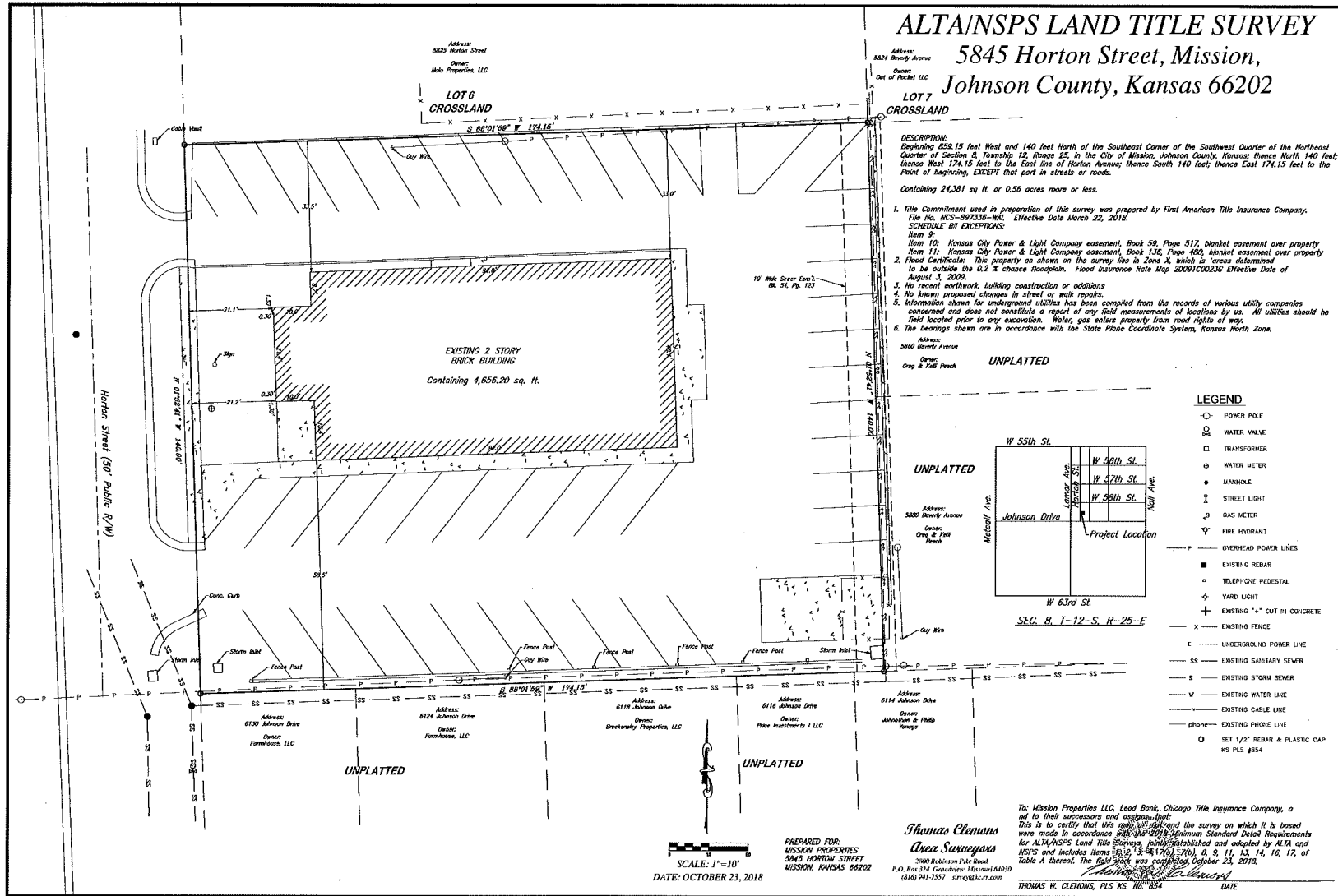


MISSION, KS OFFICE BUILDING

5845 Horton St., Mission, KS | A Kansas City Suburb

200-710 SF OFFICE
SUITES AVAILABLE
FOR LEASE

SURVEY

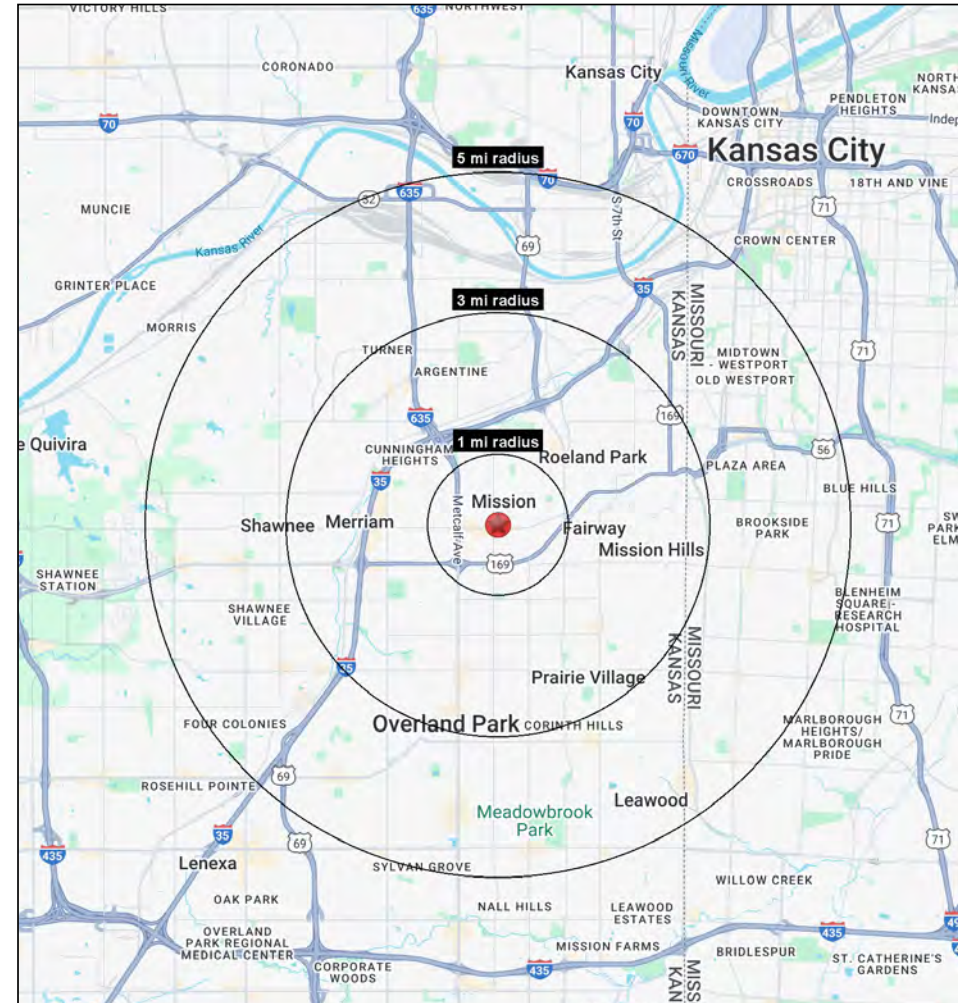
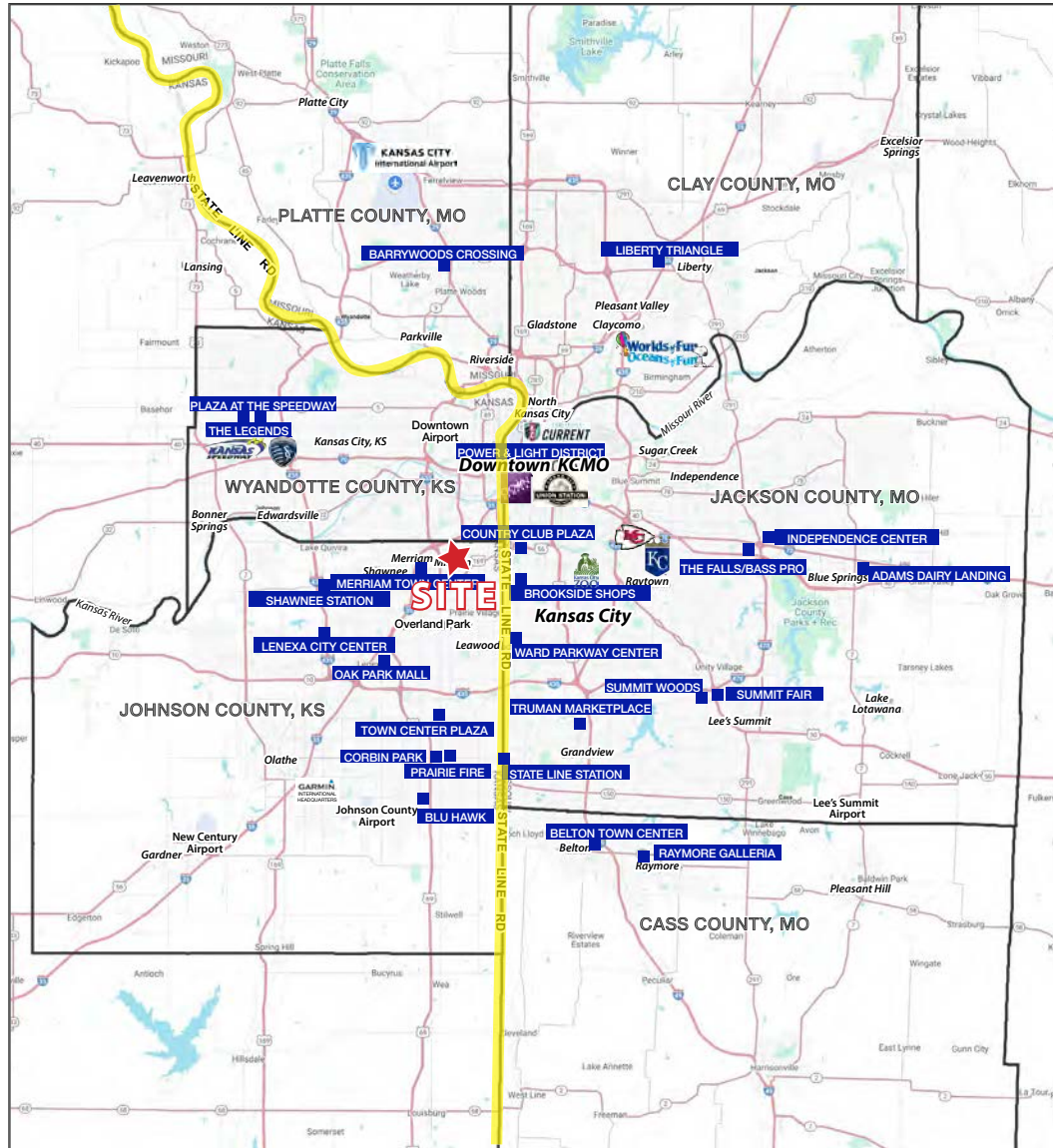




MISSION, KS OFFICE BUILDING

5845 Horton St., Mission, KS | A Kansas City Suburb

200-710 SF OFFICE SUITES AVAILABLE FOR LEASE





MISSION, KS OFFICE BUILDING

5845 Horton St., Mission, KS | A Kansas City Suburb

5845 Horton Street Mission, KS 66202	1 mi radius	3 mi radius	5 mi radius
Population			
2025 Estimated Population	11,426	88,337	261,775
2030 Projected Population	11,526	86,230	259,938
2020 Census Population	11,000	88,995	258,764
2010 Census Population	10,473	86,616	248,865
Projected Annual Growth 2025 to 2030	0.2%	-0.5%	-0.1%
Historical Annual Growth 2010 to 2025	0.6%	0.1%	0.3%
2025 Median Age	38.3	37.3	37.0
Households			
2025 Estimated Households	5,846	40,333	120,339
2030 Projected Households	6,065	40,198	121,786
2020 Census Households	5,457	39,448	116,462
2010 Census Households	5,200	38,504	111,686
Projected Annual Growth 2025 to 2030	0.8%	-	0.2%
Historical Annual Growth 2010 to 2025	0.8%	0.3%	0.5%
Race and Ethnicity			
2025 Estimated White	82.6%	77.5%	74.4%
2025 Estimated Black or African American	4.6%	5.6%	8.6%
2025 Estimated Asian or Pacific Islander	2.7%	3.2%	3.3%
2025 Estimated American Indian or Native Alaskan	0.3%	0.5%	0.5%
2025 Estimated Other Races	9.8%	13.3%	13.2%
2025 Estimated Hispanic	10.8%	15.2%	14.8%
Income			
2025 Estimated Average Household Income	\$105,120	\$129,223	\$121,454
2025 Estimated Median Household Income	\$95,030	\$96,891	\$93,391
2025 Estimated Per Capita Income	\$53,870	\$59,077	\$55,970
Education (Age 25+)			
2025 Estimated Elementary (Grade Level 0 to 8)	1.1%	2.2%	2.4%
2025 Estimated Some High School (Grade Level 9 to 11)	1.4%	2.9%	3.3%
2025 Estimated High School Graduate	12.7%	16.9%	17.0%
2025 Estimated Some College	23.9%	18.2%	17.1%
2025 Estimated Associates Degree Only	6.4%	7.3%	6.8%
2025 Estimated Bachelors Degree Only	33.9%	31.5%	31.8%
2025 Estimated Graduate Degree	20.5%	21.1%	21.6%
Business			
2025 Estimated Total Businesses	794	3,543	13,435
2025 Estimated Total Employees	10,696	41,400	149,444
2025 Estimated Employee Population per Business	13.5	11.7	11.1
2025 Estimated Residential Population per Business	14.4	24.9	19.5

©2025, Sites USA, Chandler, Arizona, 480-491-1112 Demographic Source: Applied Geographic Solutions 11/2025, TIGER Geography - RS1

