



40,000 SF RETAIL BUILDING

905 NE Colbern Road, Lee's Summit, MO

FOR LEASE




\$8.50/SF GROSS | 40,000 SF BUILDING

DEMOGRAPHICS

	1 mile	3 miles	5 miles
Estimated Population	6,633	43,411	85,592
Avg. Household Income	\$97,993	\$88,326	\$101,870

- Great location
- Easy ingress and egress
- Lots of parking
- Good household income
- Heavily populated

 **CLICK HERE TO VIEW MORE LISTING INFORMATION**

[For More Information Contact:](#)

WILLIAM GLASGOW | 816.412.7394 | wglasgow@blockandco.com

Exclusive Agent



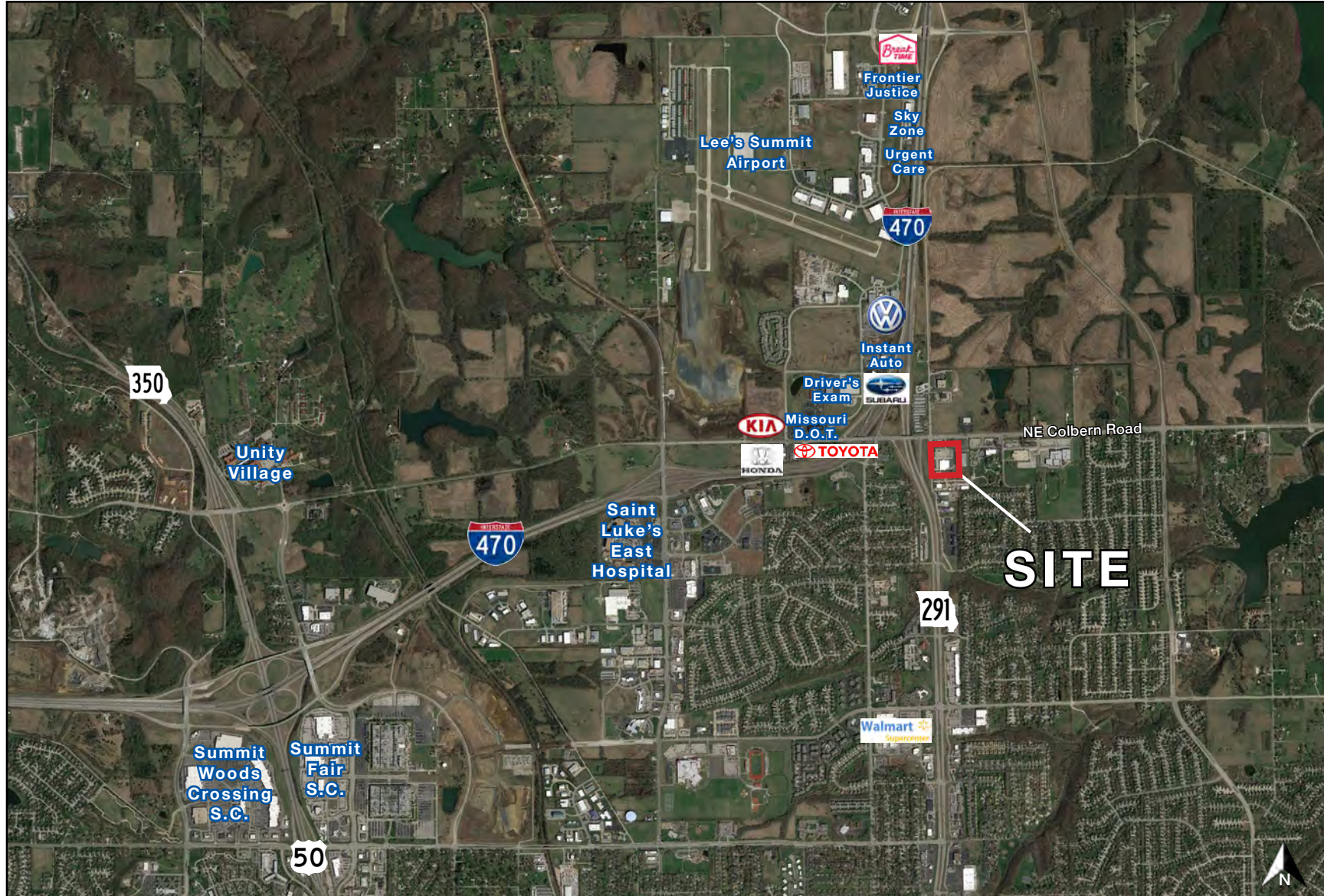


40,000 SF RETAIL BUILDING

905 NE Colbern Road, Lee's Summit, MO

FOR
LEASE

AERIAL

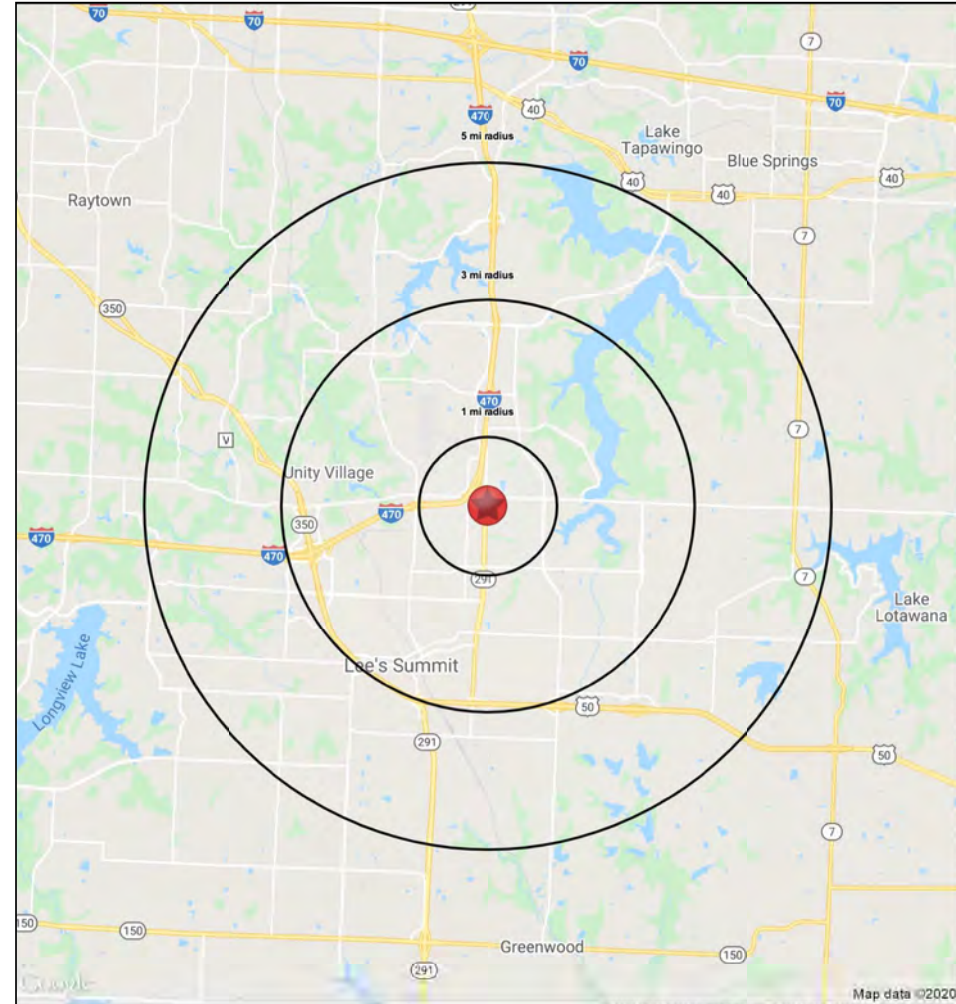
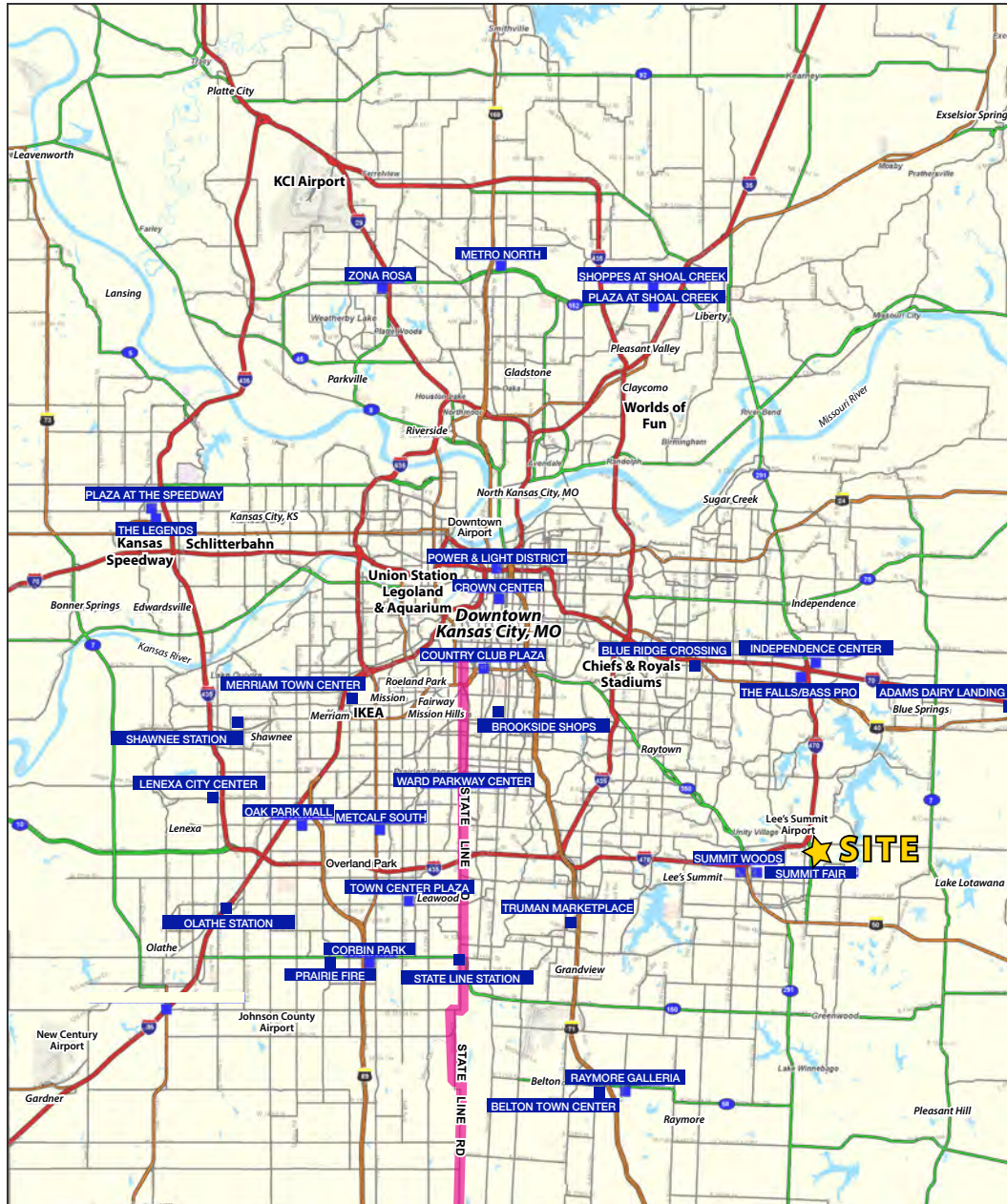




40,000 SF RETAIL BUILDING

905 NE Colbern Road, Lee's Summit, MO

FOR LEASE





40,000 SF RETAIL BUILDING

905 NE Colbern Road, Lee's Summit, MO

FOR
LEASE

905 NE Colbern Road		1 mi radius	3 mi radius	5 mi radius
Lee's Summit, MO 64086				
POPULATION	2020 Estimated Population	6,633	43,411	85,592
	2025 Projected Population	6,812	43,850	86,633
	2010 Census Population	6,426	41,176	78,953
	2000 Census Population	6,258	39,050	69,157
	Projected Annual Growth 2020 to 2025	0.5%	0.2%	0.2%
	Historical Annual Growth 2000 to 2020	0.3%	0.6%	1.2%
	2020 Median Age	35.5	35.9	38.6
HOUSEHOLDS	2020 Estimated Households	2,495	17,831	34,711
	2025 Projected Households	2,518	17,694	34,524
	2010 Census Households	2,293	16,009	30,303
	2000 Census Households	2,155	14,729	26,079
	Projected Annual Growth 2020 to 2025	0.2%	-0.2%	-0.1%
	Historical Annual Growth 2000 to 2020	0.8%	1.1%	1.7%
RACE AND ETHNICITY	2020 Estimated White	84.9%	83.9%	84.7%
	2020 Estimated Black or African American	8.3%	9.0%	8.3%
	2020 Estimated Asian or Pacific Islander	2.3%	1.8%	2.4%
	2020 Estimated American Indian or Native Alaskan	0.3%	0.4%	0.3%
	2020 Estimated Other Races	4.2%	4.9%	4.2%
	2020 Estimated Hispanic	4.8%	5.4%	4.7%
INCOME	2020 Estimated Average Household Income	\$97,993	\$88,326	\$101,870
	2020 Estimated Median Household Income	\$86,141	\$73,915	\$85,610
	2020 Estimated Per Capita Income	\$36,935	\$36,340	\$41,375
EDUCATION (AGE 25+)	2020 Estimated Elementary (Grade Level 0 to 8)	0.7%	0.5%	1.0%
	2020 Estimated Some High School (Grade Level 9 to 11)	3.3%	2.9%	2.5%
	2020 Estimated High School Graduate	17.7%	22.3%	20.4%
	2020 Estimated Some College	23.2%	26.0%	23.5%
	2020 Estimated Associates Degree Only	9.2%	8.3%	8.6%
	2020 Estimated Bachelors Degree Only	32.4%	26.6%	27.4%
	2020 Estimated Graduate Degree	13.5%	13.4%	16.6%
BUSINESS	2020 Estimated Total Businesses	384	2,662	3,805
	2020 Estimated Total Employees	3,458	31,062	47,947
	2020 Estimated Employee Population per Business	9.0	11.7	12.6
	2020 Estimated Residential Population per Business	17.3	16.3	22.5

