



# FORMER CATHOLIC SCHOOL

5840 Swope Parkway, Kansas City, Missouri



PRICE REDUCED!

## SALE PRICE: \$650,000 | 42,000 SF BUILDING

### DEMOGRAPHICS

	1 mile	3 miles	5 miles
Estimated Population	8,627	79,089	227,465
Avg. Household Income	\$47,112	\$79,437	\$80,617

- Two, three-story buildings on 2.02 acre lot
- Originally St. Martin De Porres Catholic School
- Previously Renaissance West - built out for addiction recovery
- Possible multi-family, senior living, or charter school academy use



CLICK HERE TO VIEW MORE LISTING INFORMATION

For More Information Contact:

BILL MAAS, CCIM | 816.412.7392 | [bmaas@blockandco.com](mailto:bmaas@blockandco.com)

Exclusive Agent

PHOTOS



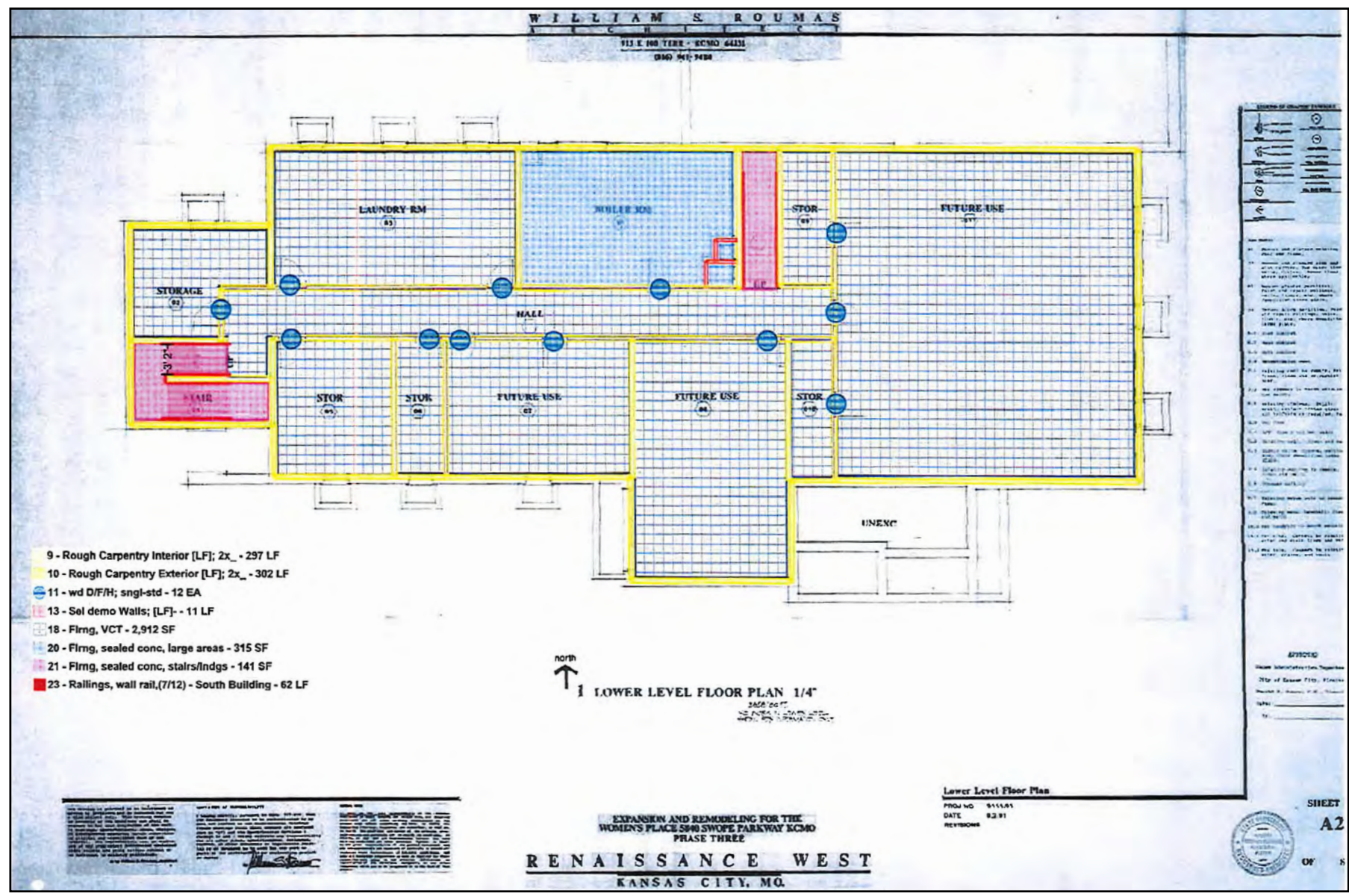




# FORMER KC PUBLIC SCHOOL

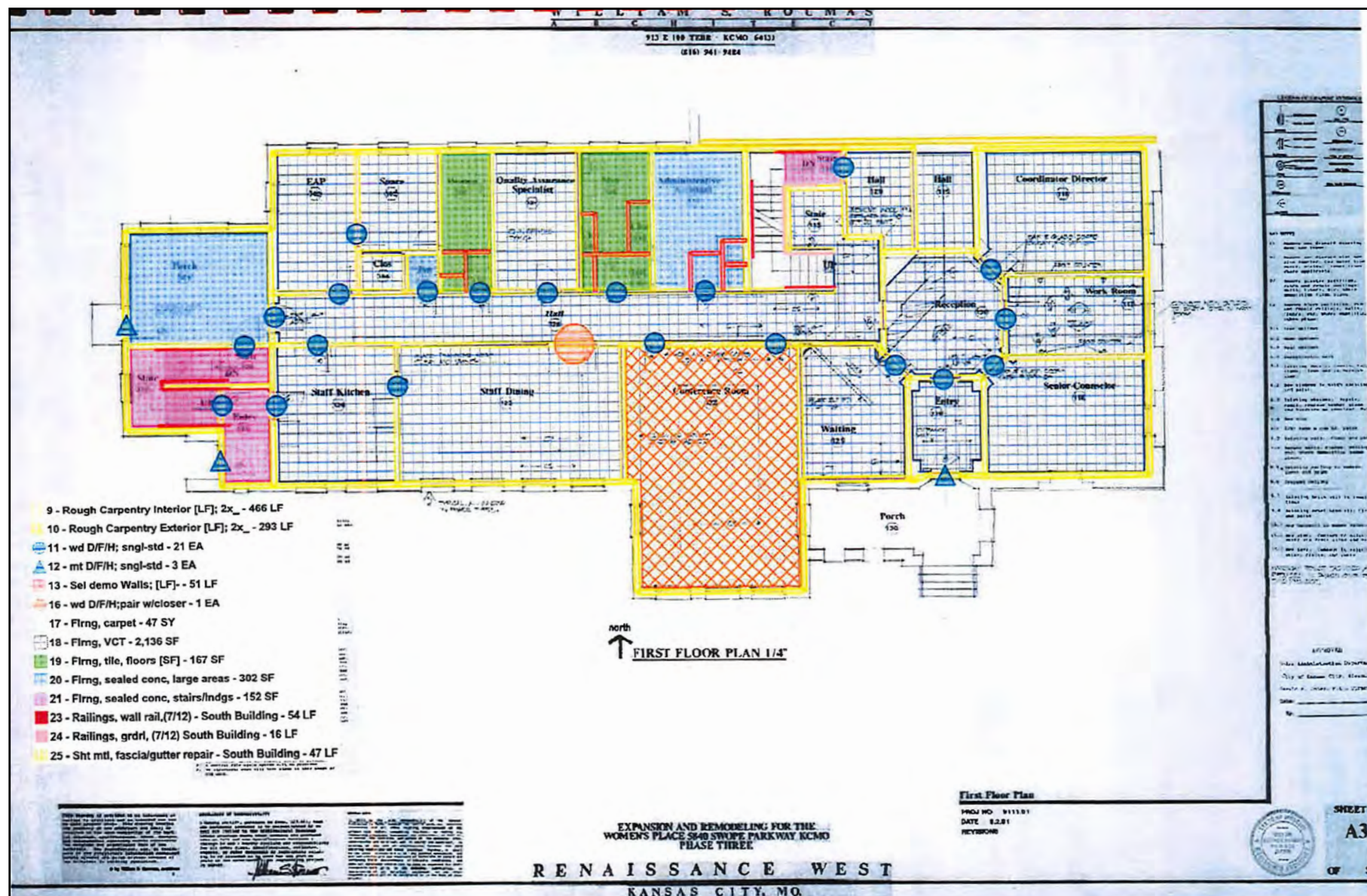
5840 Swope Parkway, Kansas City, Missouri

## FLOOR PLAN



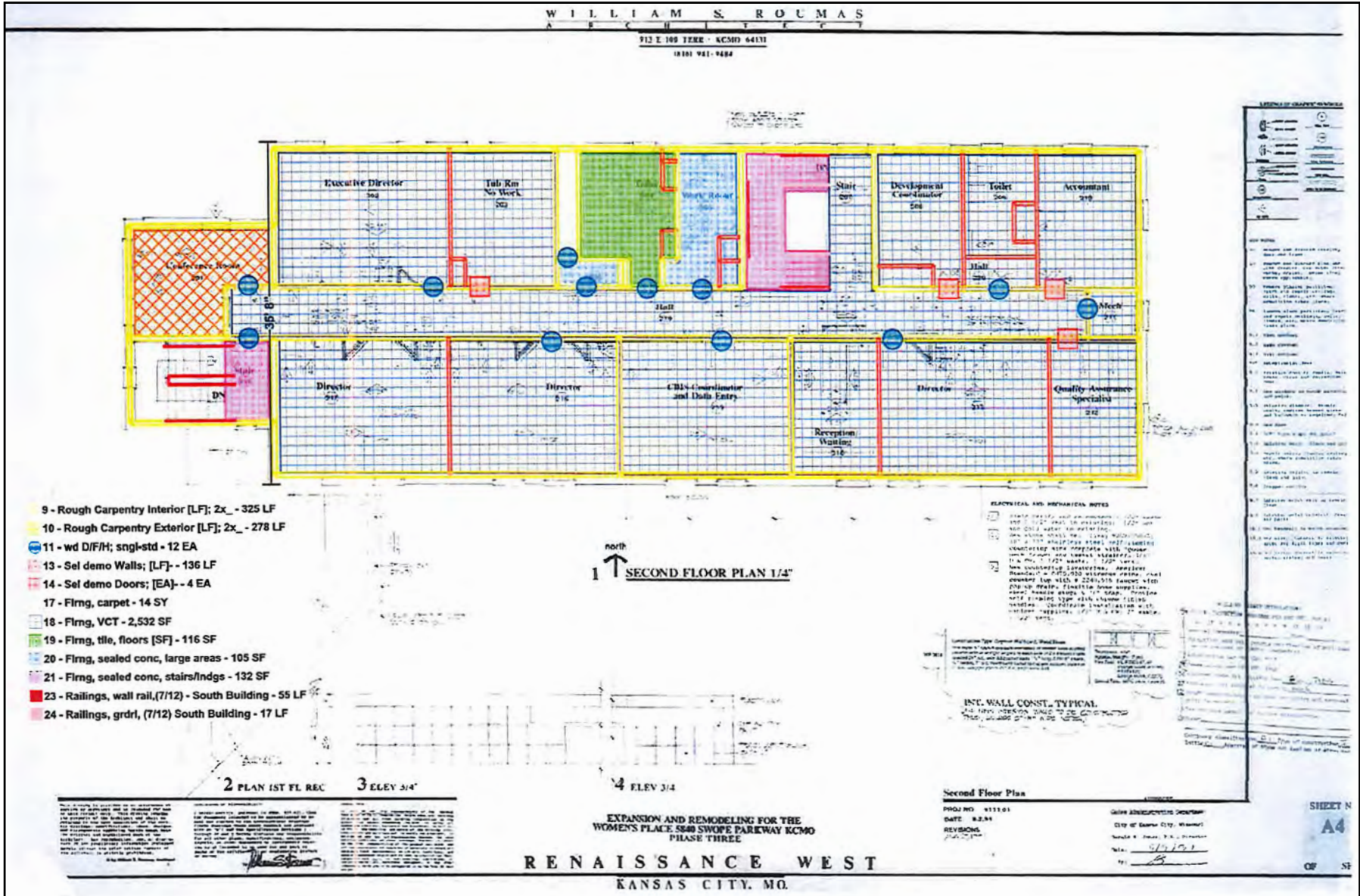


## FLOOR PLAN



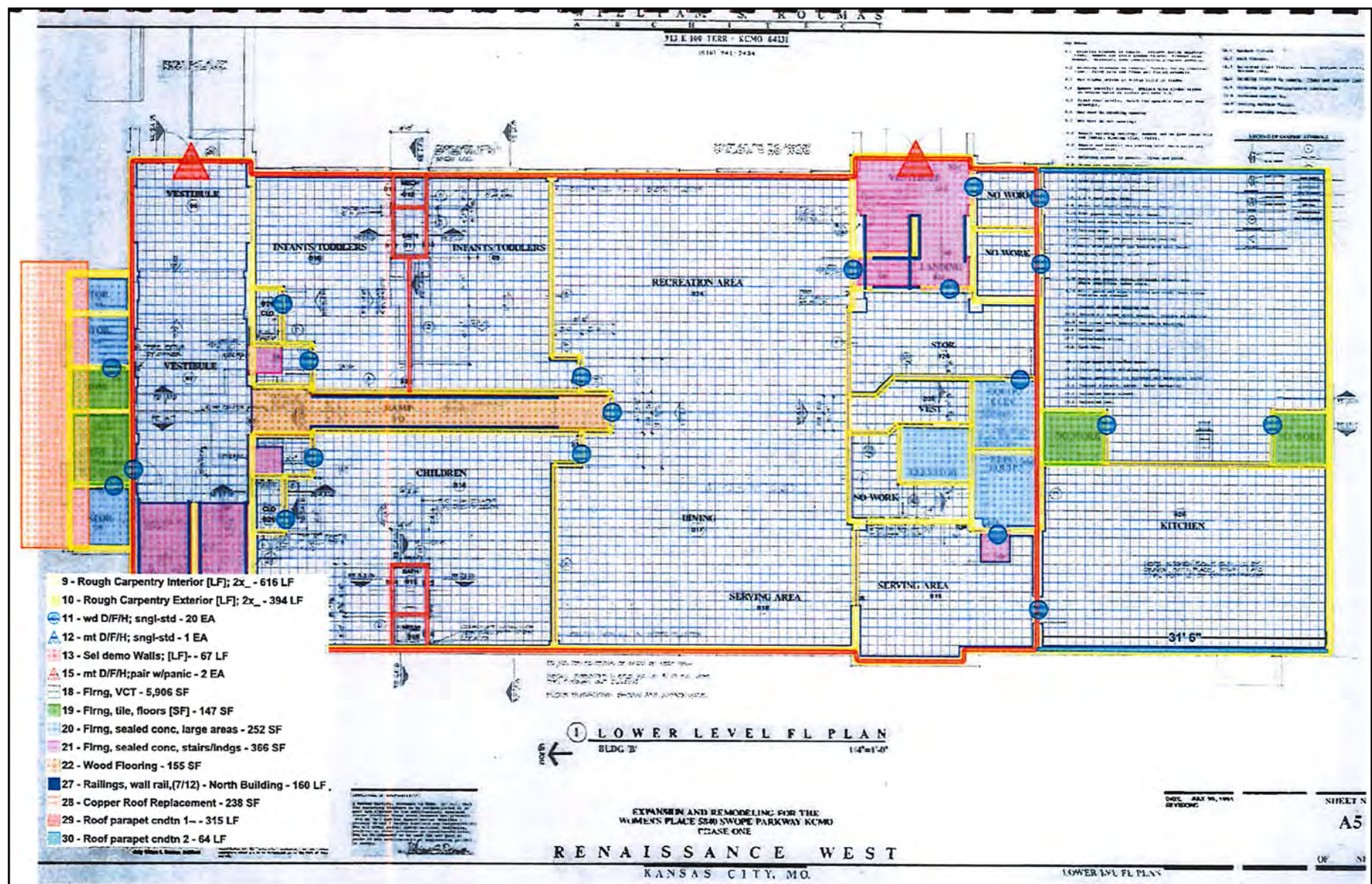


## FLOOR PLAN





## FLOOR PLAN

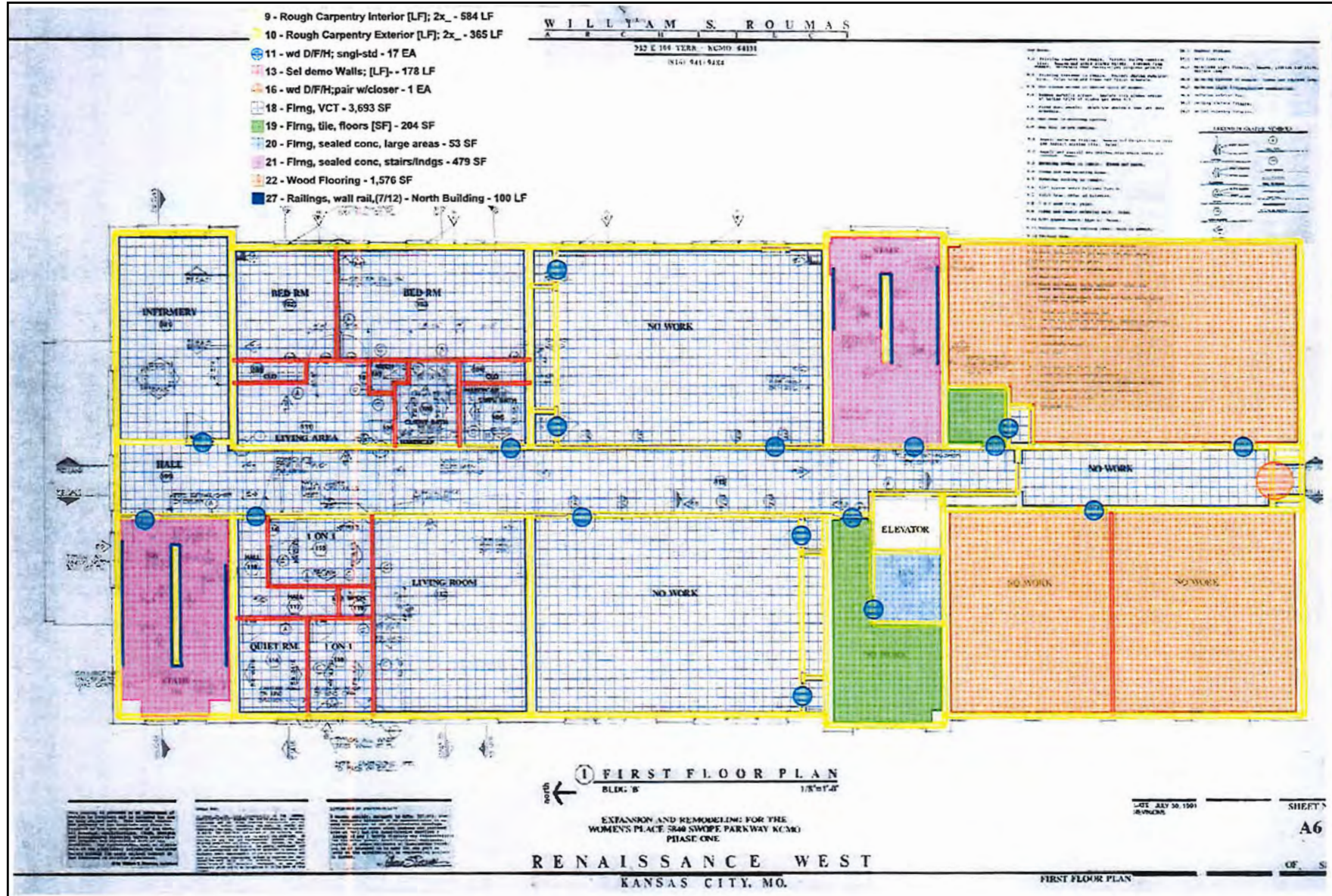




# FORMER KC PUBLIC SCHOOL

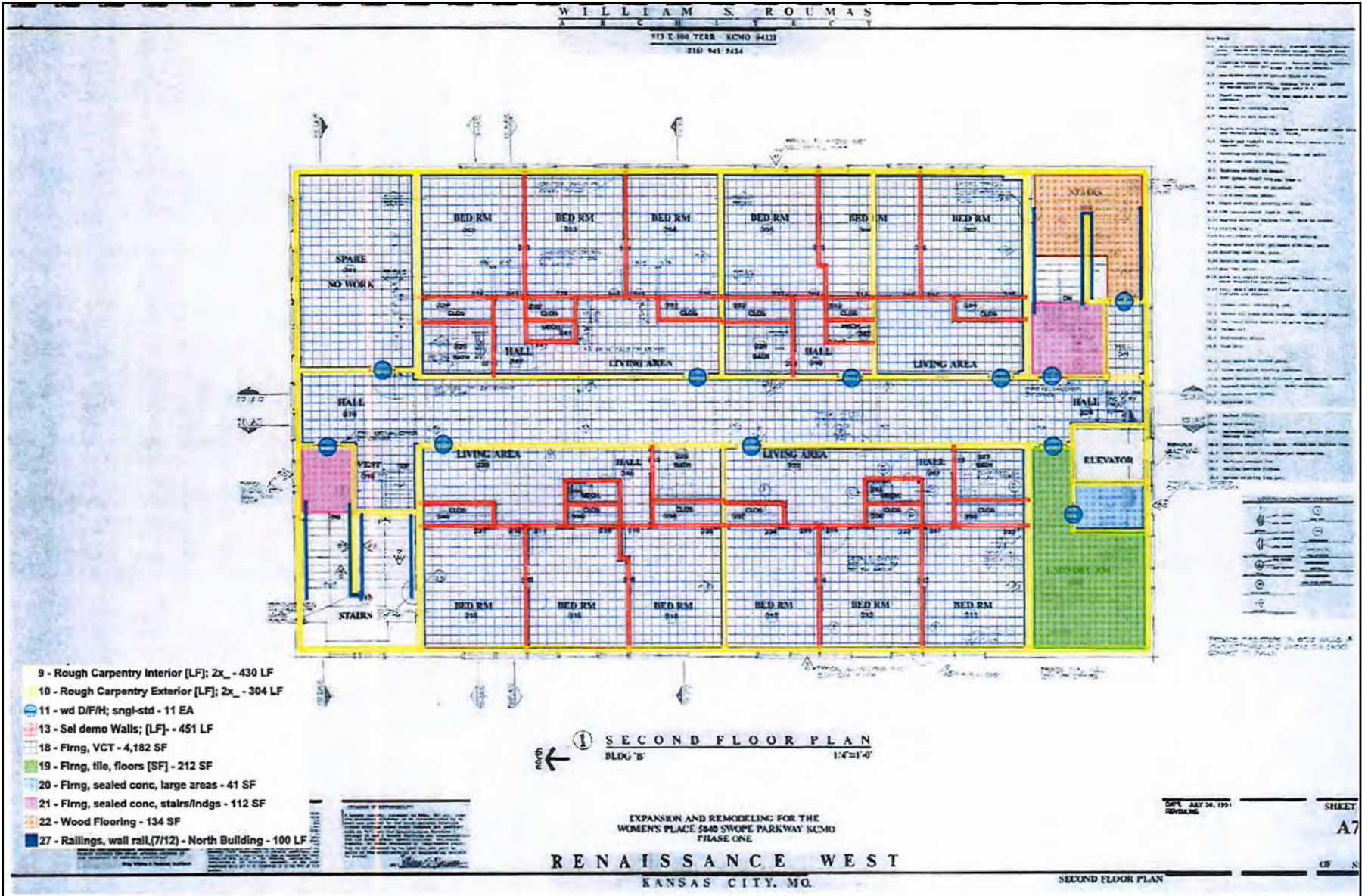
5840 Swope Parkway, Kansas City, Missouri

## FLOOR PLAN





## FLOOR PLAN



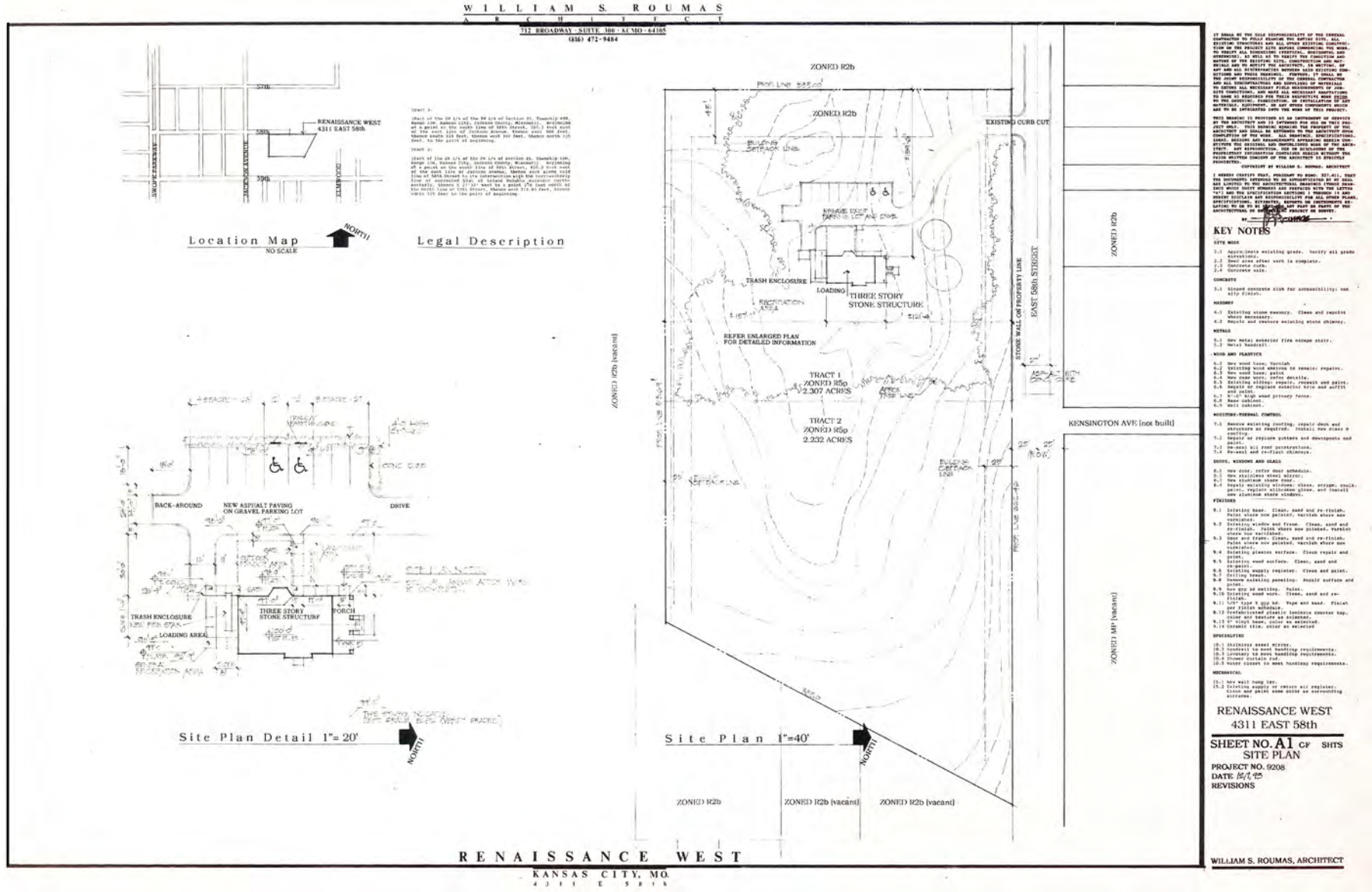




# FORMER KC PUBLIC SCHOOL

## 5840 Swope Parkway, Kansas City, Missouri

### SURVEY



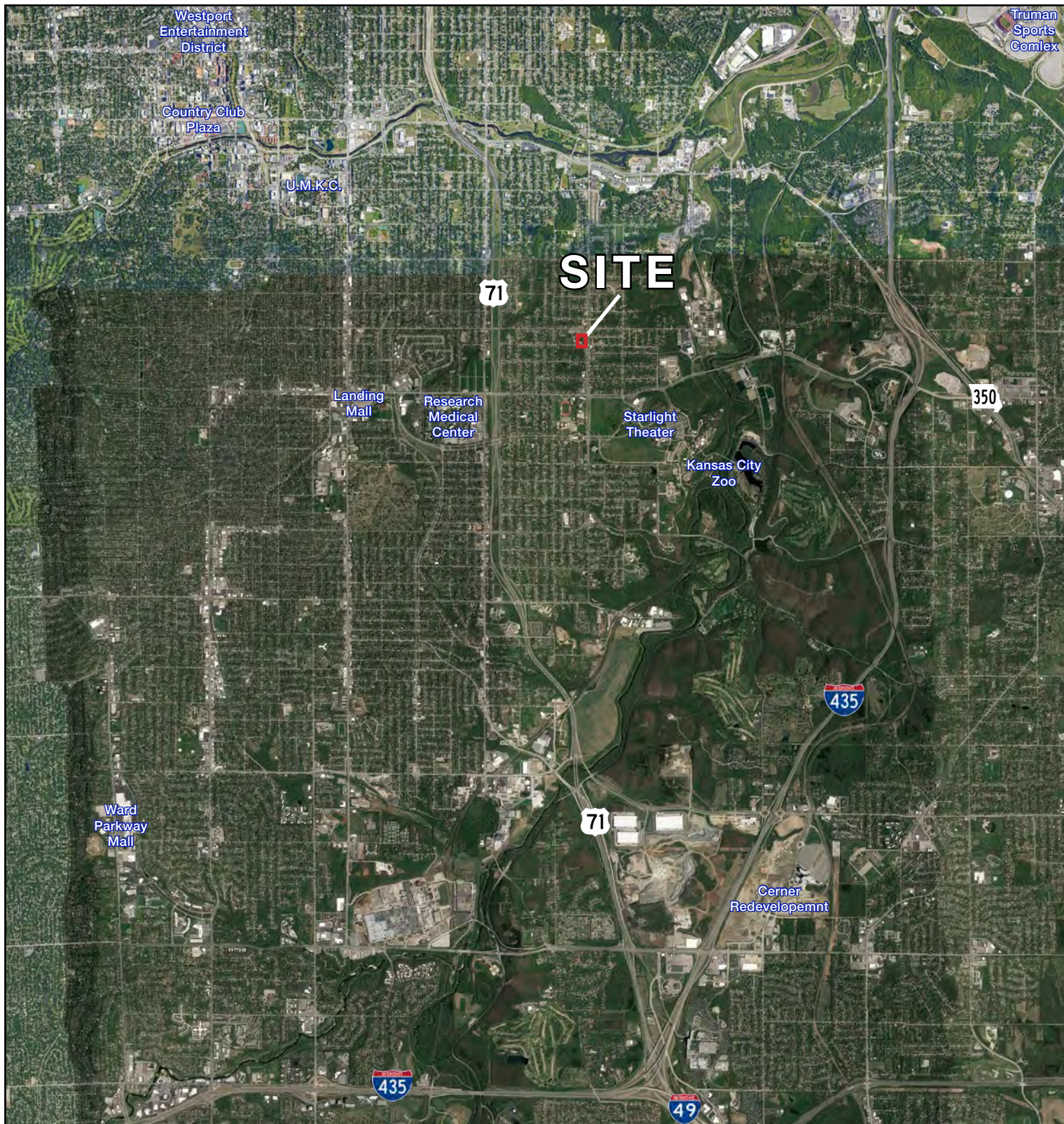


## AERIAL





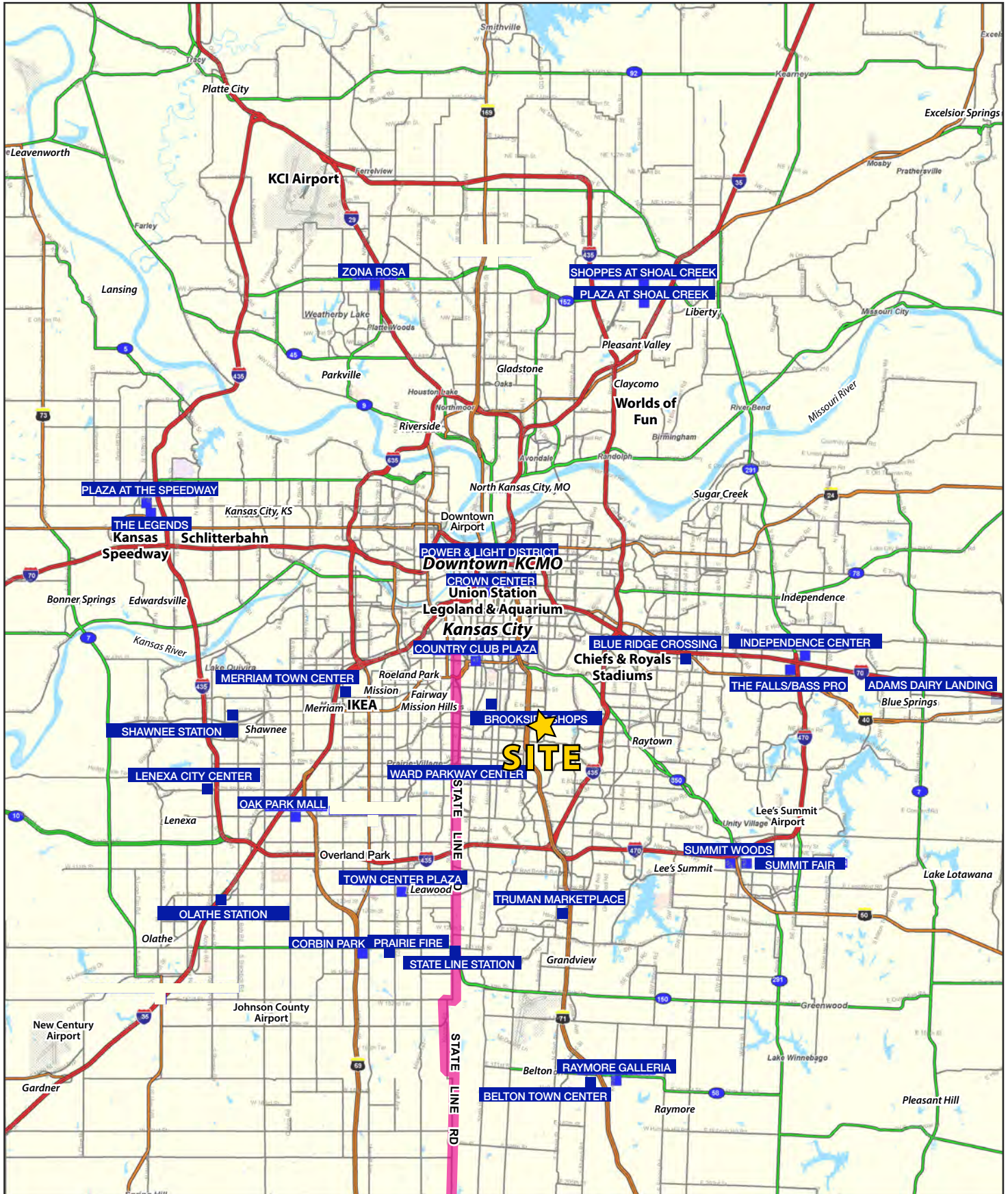
## AERIAL





# FORMER KC PUBLIC SCHOOL

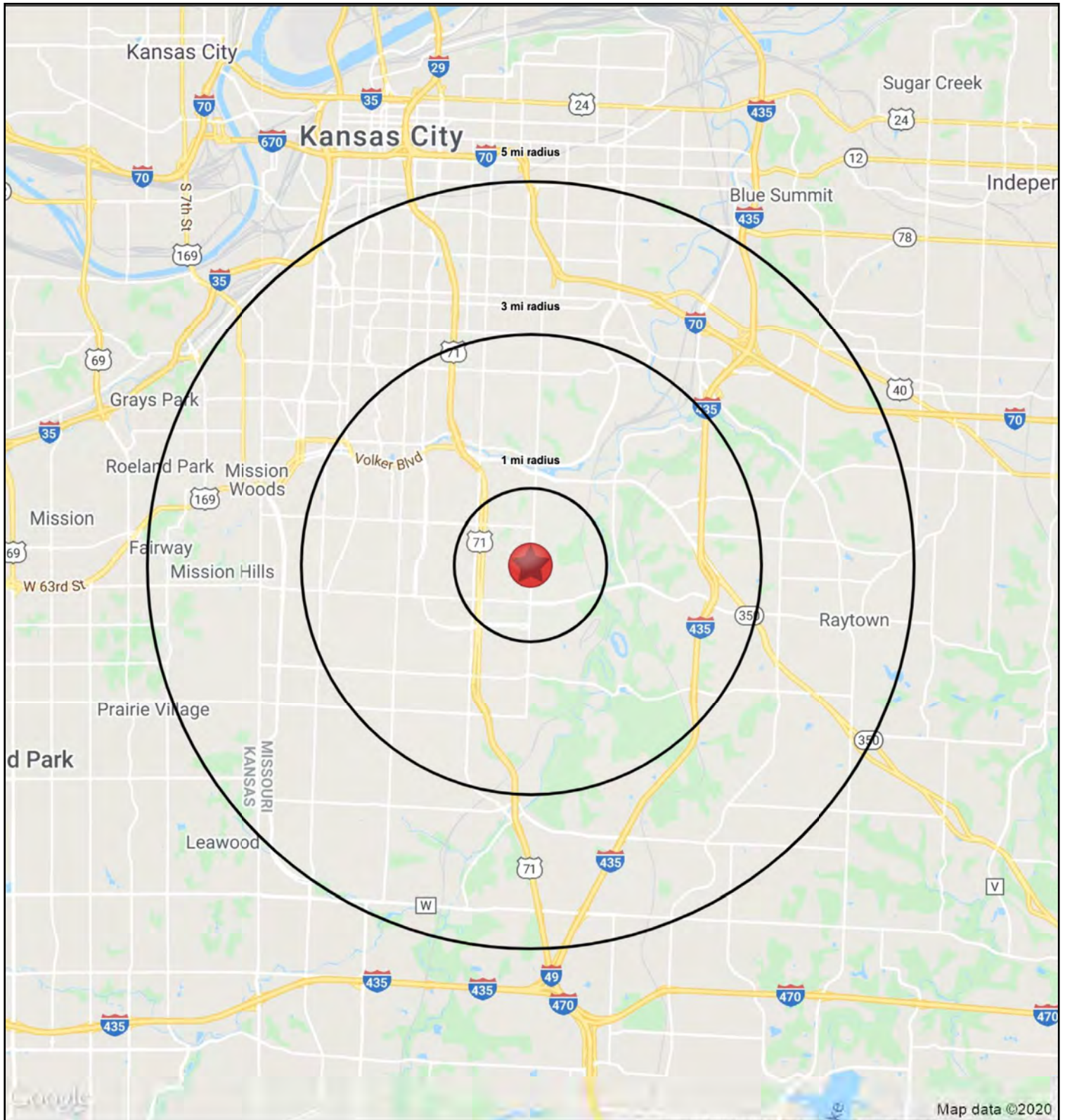
5840 Swope Parkway, Kansas City, Missouri





# FORMER KC PUBLIC SCHOOL

5840 Swope Parkway, Kansas City, Missouri







# FORMER KC PUBLIC SCHOOL

5840 Swope Parkway, Kansas City, Missouri

RS1

5840 Swope Parkway		1 mi radius	3 mi radius	5 mi radius
Kansas City, MO 64130				
POPULATION	2020 Estimated Population	8,627	79,089	227,465
	2025 Projected Population	9,431	84,496	237,088
	2010 Census Population	8,447	77,649	218,177
	2000 Census Population	10,533	89,661	242,869
	Projected Annual Growth 2020 to 2025	1.9%	1.4%	0.8%
	Historical Annual Growth 2000 to 2020	-0.9%	-0.6%	-0.3%
	2020 Median Age	39.5	37.3	36.8
HOUSEHOLDS	2020 Estimated Households	3,658	35,180	106,875
	2025 Projected Households	3,954	37,033	109,343
	2010 Census Households	3,403	32,753	96,925
	2000 Census Households	3,959	36,568	106,126
	Projected Annual Growth 2020 to 2025	1.6%	1.1%	0.5%
	Historical Annual Growth 2000 to 2020	-0.4%	-0.2%	-
RACE AND ETHNICITY	2020 Estimated White	4.6%	33.3%	48.7%
	2020 Estimated Black or African American	89.7%	59.8%	41.3%
	2020 Estimated Asian or Pacific Islander	0.2%	1.9%	2.3%
	2020 Estimated American Indian or Native Alaskan	0.4%	0.4%	0.5%
	2020 Estimated Other Races	5.0%	4.7%	7.2%
	2020 Estimated Hispanic	3.1%	3.9%	8.3%
INCOME	2020 Estimated Average Household Income	\$47,112	\$79,437	\$80,617
	2020 Estimated Median Household Income	\$35,612	\$56,149	\$59,340
	2020 Estimated Per Capita Income	\$20,111	\$35,464	\$37,999
EDUCATION (AGE 25+)	2020 Estimated Elementary (Grade Level 0 to 8)	3.1%	2.1%	2.4%
	2020 Estimated Some High School (Grade Level 9 to 11)	13.2%	8.5%	6.7%
	2020 Estimated High School Graduate	39.2%	28.6%	24.7%
	2020 Estimated Some College	26.2%	22.4%	21.7%
	2020 Estimated Associates Degree Only	5.3%	5.8%	6.3%
	2020 Estimated Bachelors Degree Only	8.1%	19.2%	22.6%
	2020 Estimated Graduate Degree	4.9%	13.4%	15.5%
BUSINESS	2020 Estimated Total Businesses	117	2,622	11,904
	2020 Estimated Total Employees	2,495	35,379	161,590
	2020 Estimated Employee Population per Business	21.4	13.5	13.6
	2020 Estimated Residential Population per Business	74.0	30.2	19.1