



## SALE PRICE: \$185,000 | 13,057 SF BUILDING

### DEMOGRAPHICS

	1 mile	3 miles	5 miles
Estimated Population	1,084	1,303	1,607
Avg. Household Income	\$57,622	\$58,902	\$59,305

- Three story office building
- 0.22 acre lot
- Well maintained building
- The Heart of Downtown Princeton, Missouri
- Priced below replacement value



CLICK HERE TO VIEW MORE  
LISTING INFORMATION

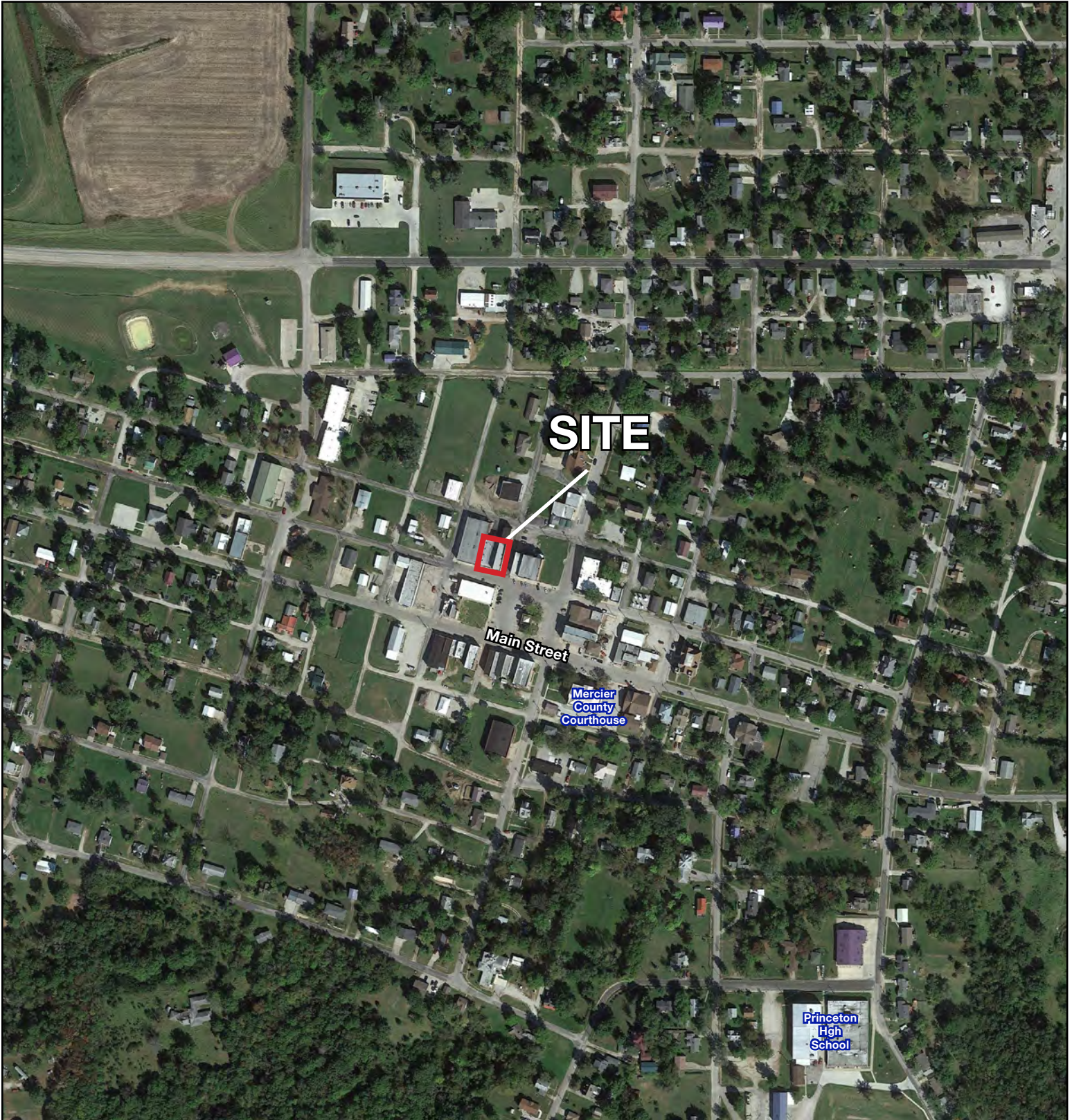
For More Information Contact:

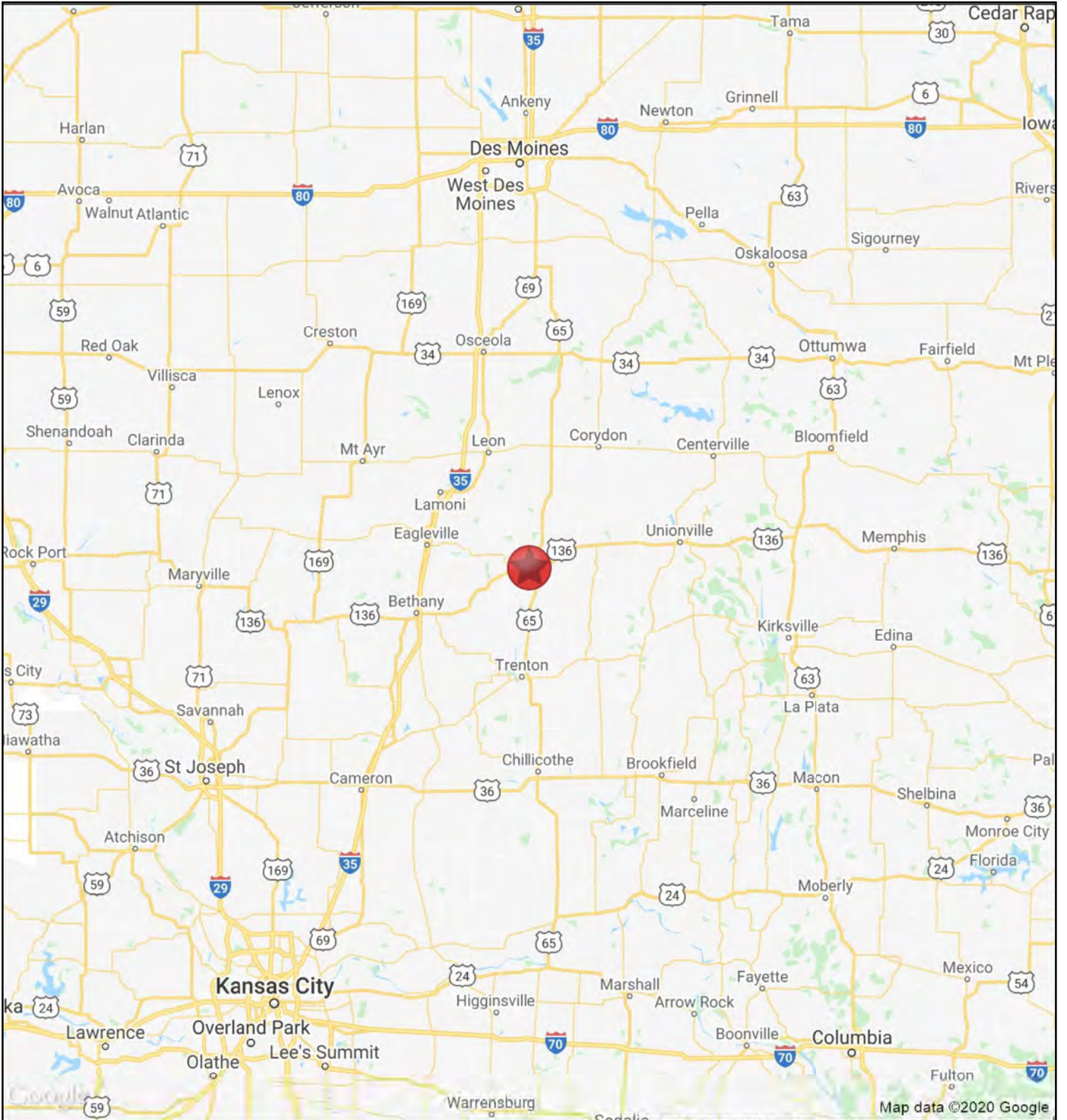
DANIEL BROCATO | 816.412.7303 | [dbrocato@blockandco.com](mailto:dbrocato@blockandco.com)

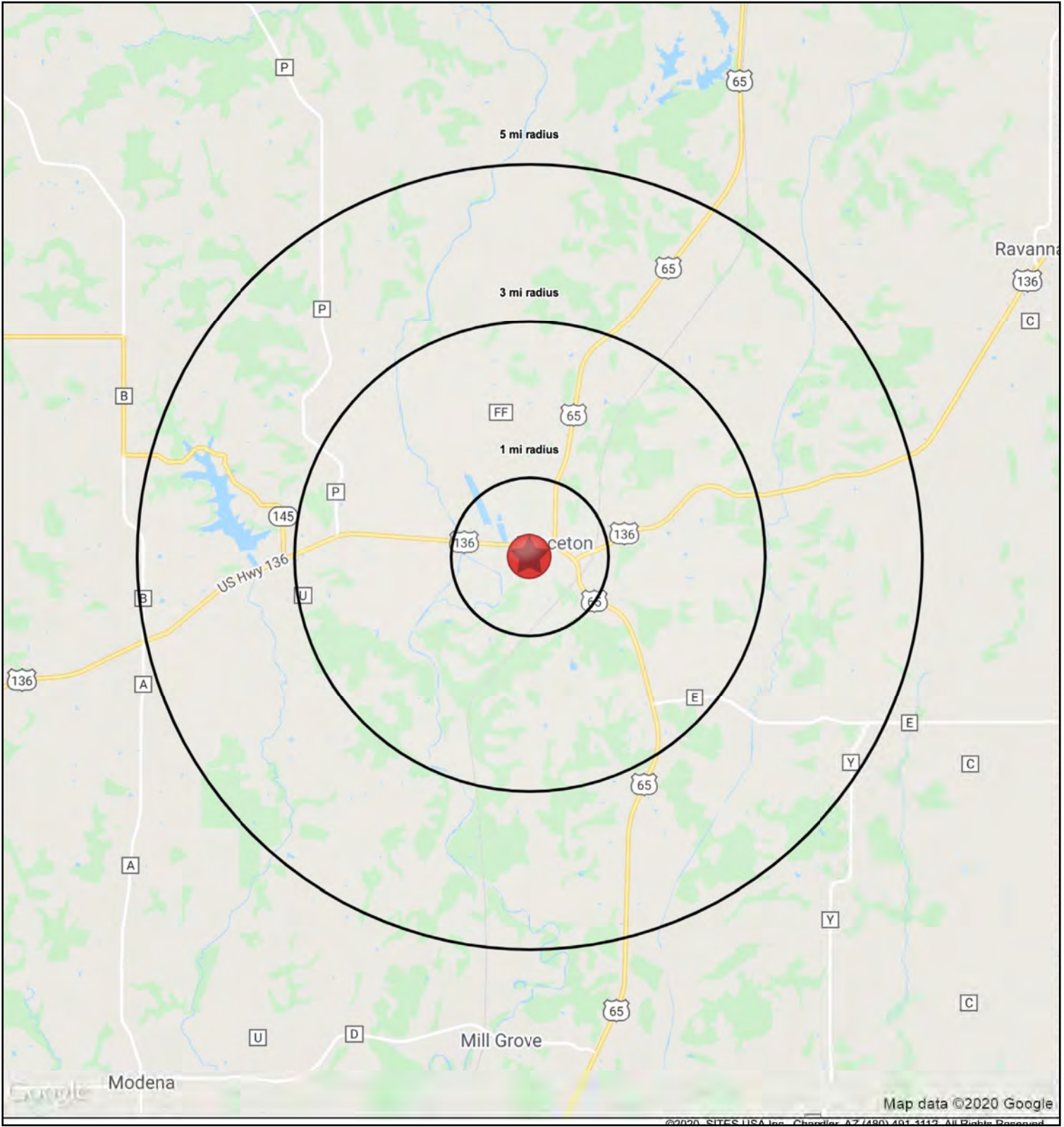
MARSHAL BLOUNT | 816.412.7342 | [mblount@blockandco.com](mailto:mblount@blockandco.com)

Exclusive Agents

AERIAL







HS1

201 Washington Street Princeton, MO 64673		1 mi radius	3 mi radius	5 mi radius
<b>POPULATION</b>	2020 Estimated Population	1,084	1,303	1,607
	2025 Projected Population	1,041	1,252	1,547
	2010 Census Population	1,171	1,401	1,713
	2000 Census Population	1,058	1,265	1,554
	Projected Annual Growth 2020 to 2025	-0.8%	-0.8%	-0.8%
	Historical Annual Growth 2000 to 2020	0.1%	0.1%	0.2%
	2020 Median Age	39.1	39.2	39.3
<b>HOUSEHOLDS</b>	2020 Estimated Households	419	503	620
	2025 Projected Households	403	484	597
	2010 Census Households	480	573	700
	2000 Census Households	464	553	678
	Projected Annual Growth 2020 to 2025	-0.8%	-0.8%	-0.7%
	Historical Annual Growth 2000 to 2020	-0.5%	-0.5%	-0.4%
<b>RACE AND ETHNICITY</b>	2020 Estimated White	95.6%	95.7%	95.7%
	2020 Estimated Black or African American	0.7%	0.7%	0.7%
	2020 Estimated Asian or Pacific Islander	0.7%	0.7%	0.7%
	2020 Estimated American Indian or Native Alaskan	0.6%	0.6%	0.6%
	2020 Estimated Other Races	2.4%	2.4%	2.3%
	2020 Estimated Hispanic	3.0%	3.0%	3.0%
<b>INCOME</b>	2020 Estimated Average Household Income	\$57,622	\$58,902	\$59,305
	2020 Estimated Median Household Income	\$50,956	\$51,496	\$51,551
	2020 Estimated Per Capita Income	\$22,416	\$22,855	\$23,003
<b>EDUCATION (AGE 25+)</b>	2020 Estimated Elementary (Grade Level 0 to 8)	4.3%	4.4%	4.4%
	2020 Estimated Some High School (Grade Level 9 to 11)	5.1%	5.1%	5.1%
	2020 Estimated High School Graduate	43.0%	43.2%	43.4%
	2020 Estimated Some College	24.7%	24.3%	23.9%
	2020 Estimated Associates Degree Only	6.3%	6.2%	6.1%
	2020 Estimated Bachelors Degree Only	9.8%	10.0%	10.1%
	2020 Estimated Graduate Degree	6.8%	6.9%	6.9%
<b>BUSINESS</b>	2020 Estimated Total Businesses	113	115	115
	2020 Estimated Total Employees	720	737	740
	2020 Estimated Employee Population per Business	6.4	6.4	6.4
	2020 Estimated Residential Population per Business	9.6	11.4	14.0