



Downtown Parkville Redevelopment

207 Main Street, Parkville, Missouri



SALE PRICE: \$125,000 | 6,000 SF BUILDING

DEMOGRAPHICS

	1 mile	3 miles	5 miles
Estimated Population	2,178	29,277	110,028
Avg. Household Income	\$79,423	\$113,909	\$90,251

- Redevelopment project in downtown Parkville, MO
- Zoned Old Town District, allowing both commercial and residential
- Drive in door on lower level
- Excellent value add project for an investor or owner/user
- 3,200 SF lot



CLICK HERE TO VIEW MORE LISTING INFORMATION

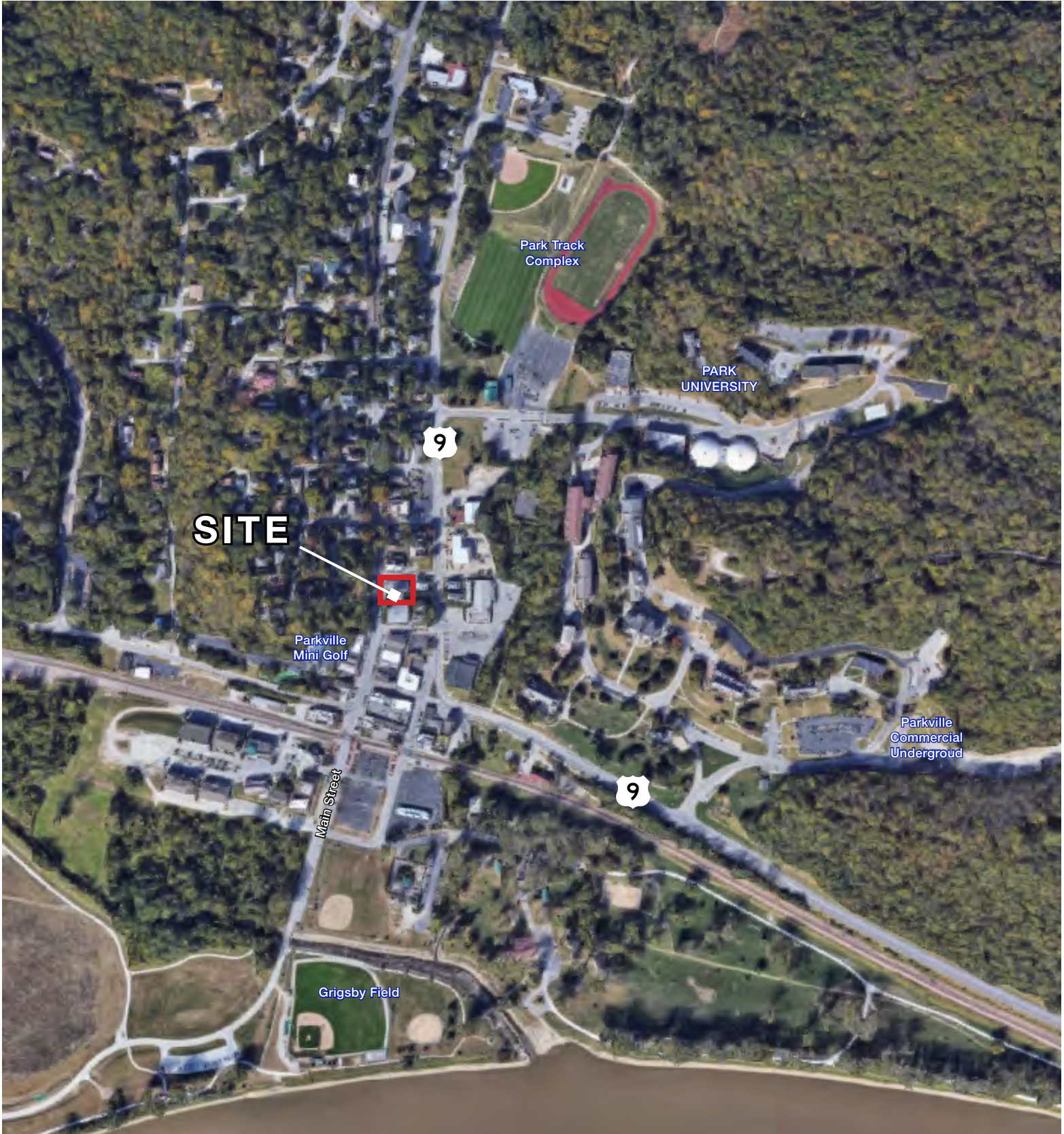
For More Information Contact:

GARRETT COHOON | 816.412.7315 | gcohoon@blockandco.com

Exclusive Agent

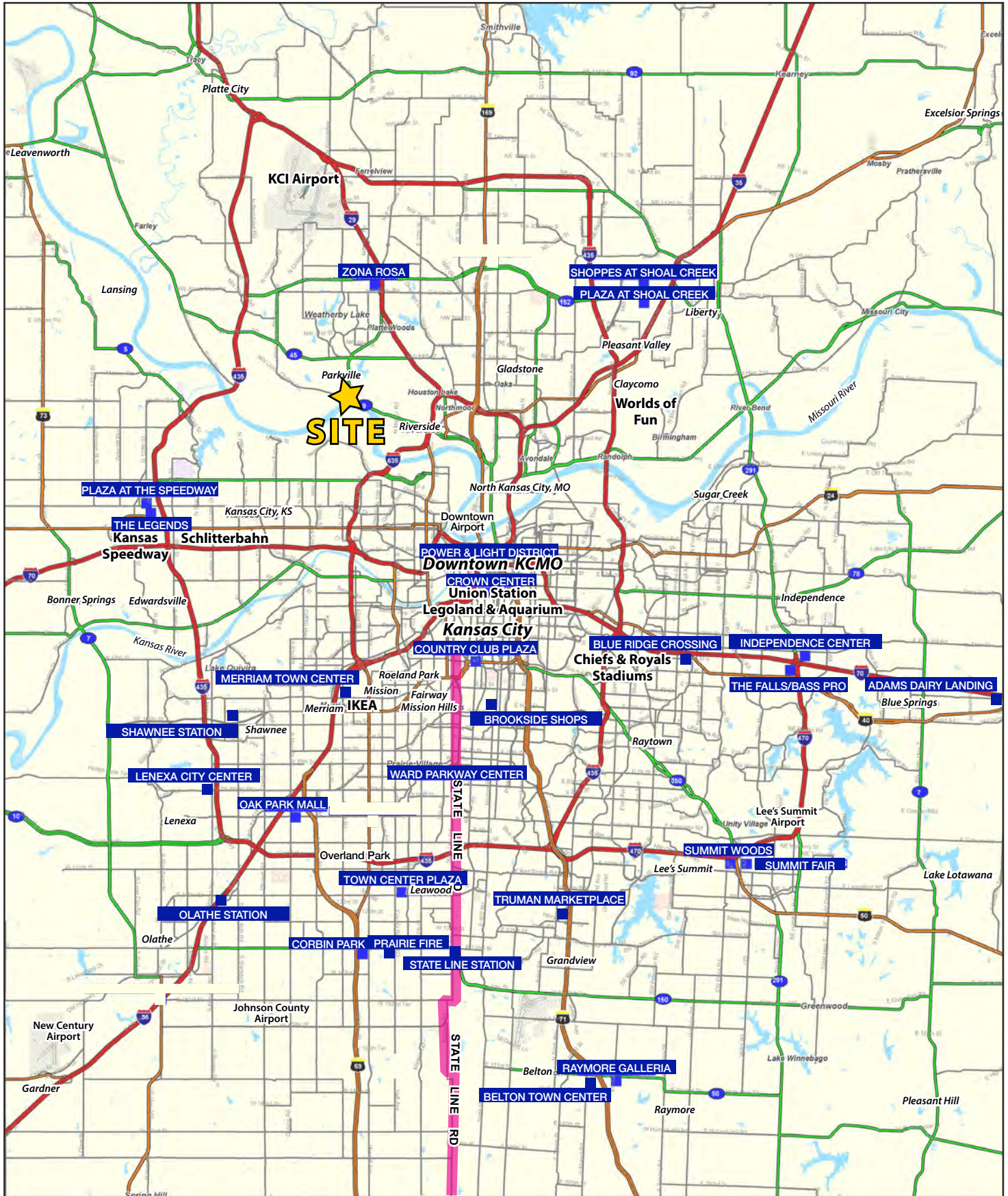


AERIAL



Downtown Parkville Redevelopment

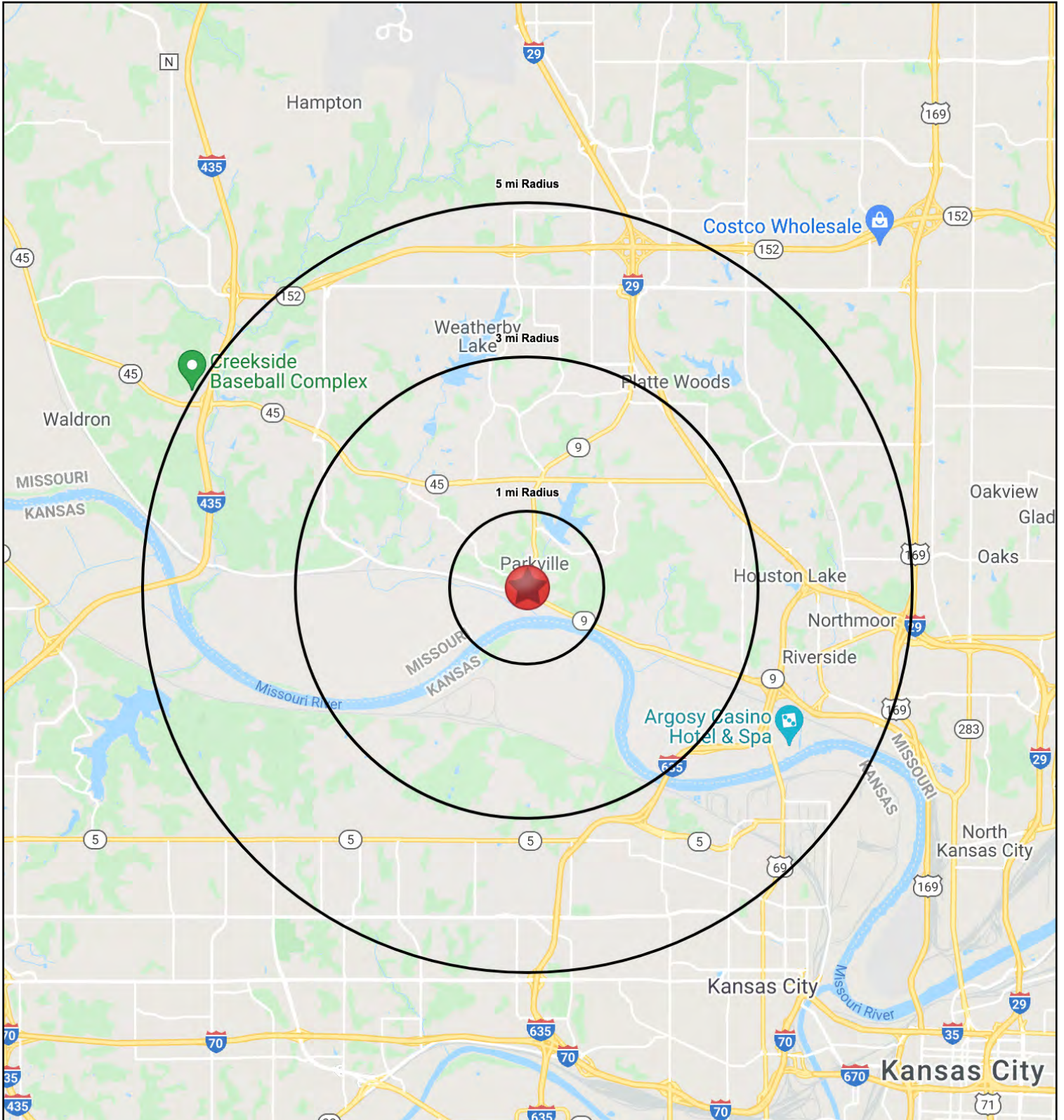
207 Main Street, Parkville, Missouri





Downtown Parkville Redevelopment

207 Main Street, Parkville, Missouri





Downtown Parkville Redevelopment

207 Main Street, Parkville, Missouri

207 Main Street Parkville, MO 64152	1 mi radius	3 mi radius	5 mi radius
Population			
2021 Estimated Population	2,178	29,277	110,028
2026 Projected Population	2,314	31,836	115,041
2010 Census Population	1,873	24,394	98,988
2000 Census Population	1,698	23,277	94,779
Projected Annual Growth 2021 to 2026	1.3%	1.7%	0.9%
Historical Annual Growth 2000 to 2021	1.3%	1.2%	0.8%
2021 Median Age	33.3	38.8	36.6
Households			
2021 Estimated Households	813	11,299	42,588
2026 Projected Households	860	12,083	44,058
2010 Census Households	707	9,592	38,932
2000 Census Households	726	9,103	37,075
Projected Annual Growth 2021 to 2026	1.1%	1.4%	0.7%
Historical Annual Growth 2000 to 2021	0.6%	1.1%	0.7%
Race and Ethnicity			
2021 Estimated White	79.1%	80.6%	65.2%
2021 Estimated Black or African American	9.8%	9.6%	19.8%
2021 Estimated Asian or Pacific Islander	5.3%	4.0%	5.2%
2021 Estimated American Indian or Native Alaskan	0.3%	0.4%	0.6%
2021 Estimated Other Races	5.5%	5.3%	9.1%
2021 Estimated Hispanic	7.0%	7.6%	12.8%
Income			
2021 Estimated Average Household Income	\$79,423	\$113,909	\$90,251
2021 Estimated Median Household Income	\$86,619	\$86,194	\$70,961
2021 Estimated Per Capita Income	\$30,492	\$44,044	\$34,998
Education (Age 25+)			
2021 Estimated Elementary (Grade Level 0 to 8)	2.6%	1.7%	4.5%
2021 Estimated Some High School (Grade Level 9 to 11)	4.1%	3.4%	5.6%
2021 Estimated High School Graduate	17.2%	21.9%	25.5%
2021 Estimated Some College	17.2%	19.9%	21.2%
2021 Estimated Associates Degree Only	9.2%	8.2%	8.9%
2021 Estimated Bachelors Degree Only	21.6%	27.3%	21.0%
2021 Estimated Graduate Degree	28.0%	17.7%	13.3%
Business			
2021 Estimated Total Businesses	179	899	2,718
2021 Estimated Total Employees	4,335	13,844	38,297
2021 Estimated Employee Population per Business	24.3	15.4	14.1
2021 Estimated Residential Population per Business	12.2	32.6	40.5

©2021. Sites USA. Chandler, Arizona. 480-491-1112 Demographic Source: Applied Geographic Solutions 5/2021. TIGER Geographv - RS1

