



NET LEASED INVESTMENT SALE

6250 N. Oak Trafficway, Kansas City, Missouri



SALE PRICE: \$950,000 | 2025 CAP RATE: 8.9%

DEMOGRAPHICS

	1 mile	3 miles	5 miles
Estimated Population	11,726	81,636	175,823
Avg. Household Income	\$57,774	\$76,202	\$78,874

- Great commercial street
- Large lot - 1.15 acres
- 3,824 SF building
- 2025 CAP Rate = 8.9%, following years = 9.3%
- Absolute NNN lease

 [CLICK HERE TO VIEW MORE LISTING INFORMATION](#)

For More Information Contact: *Exclusive Agents*
COLTIN DIEHL | 816.412.7339 | cdiehl@blockandco.com
JAY FRIEDMAN | 816.412.7334 | jfriedman@blockandco.com

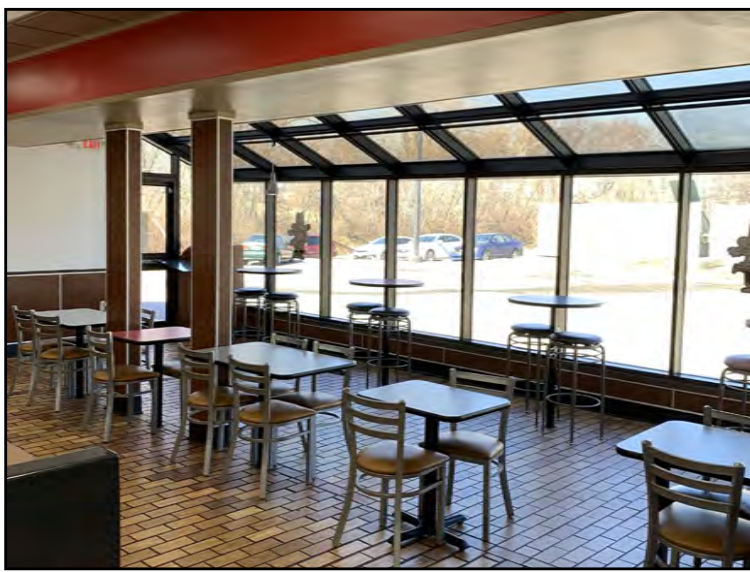




NET LEASED INVESTMENT SALE

6250 N. Oak Trafficway, Kansas City, Missouri

PHOTOS





NET LEASED INVESTMENT SALE

6250 N. Oak Trafficway, Kansas City, Missouri

DRONE PHOTO

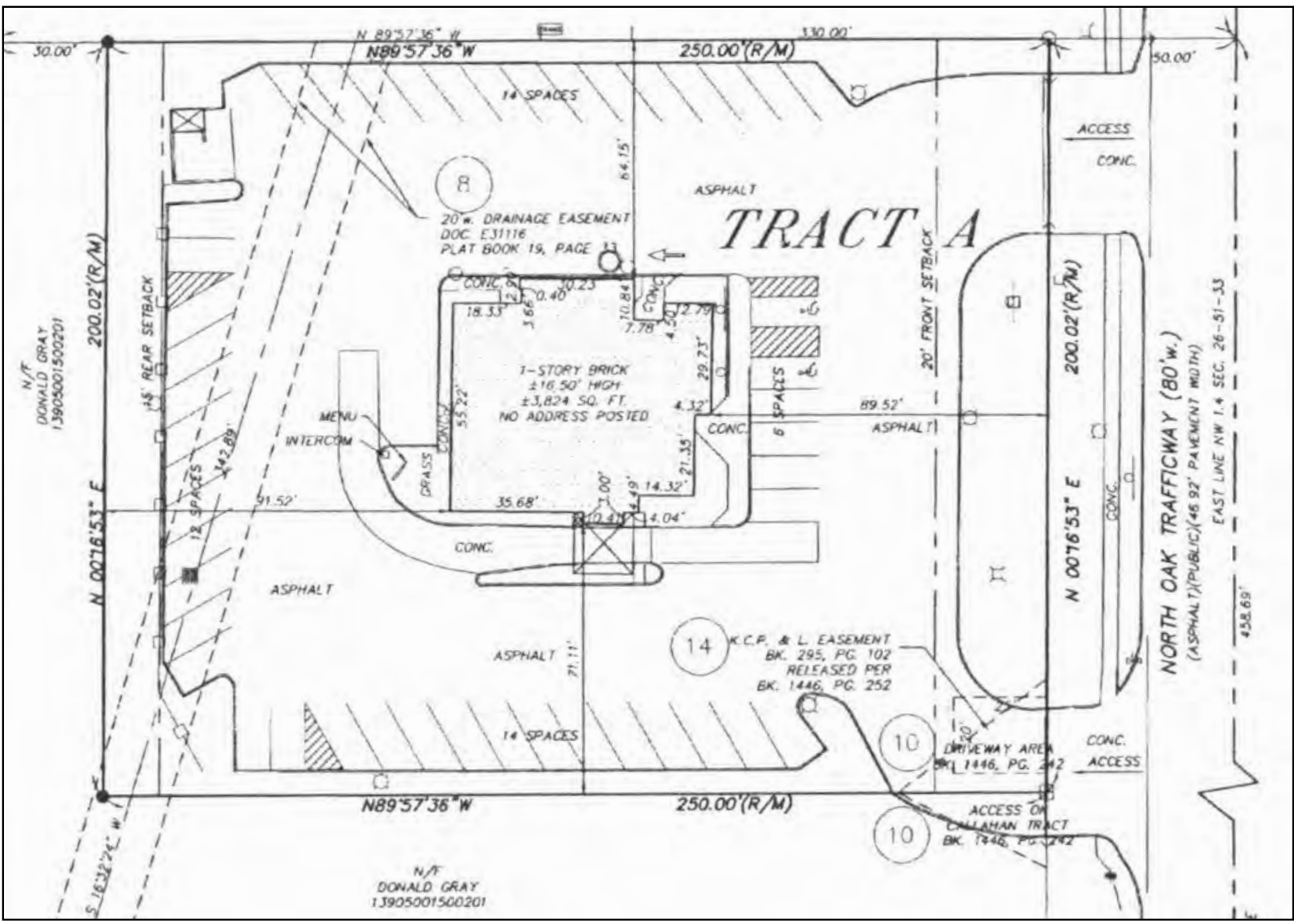




NET LEASED INVESTMENT SALE

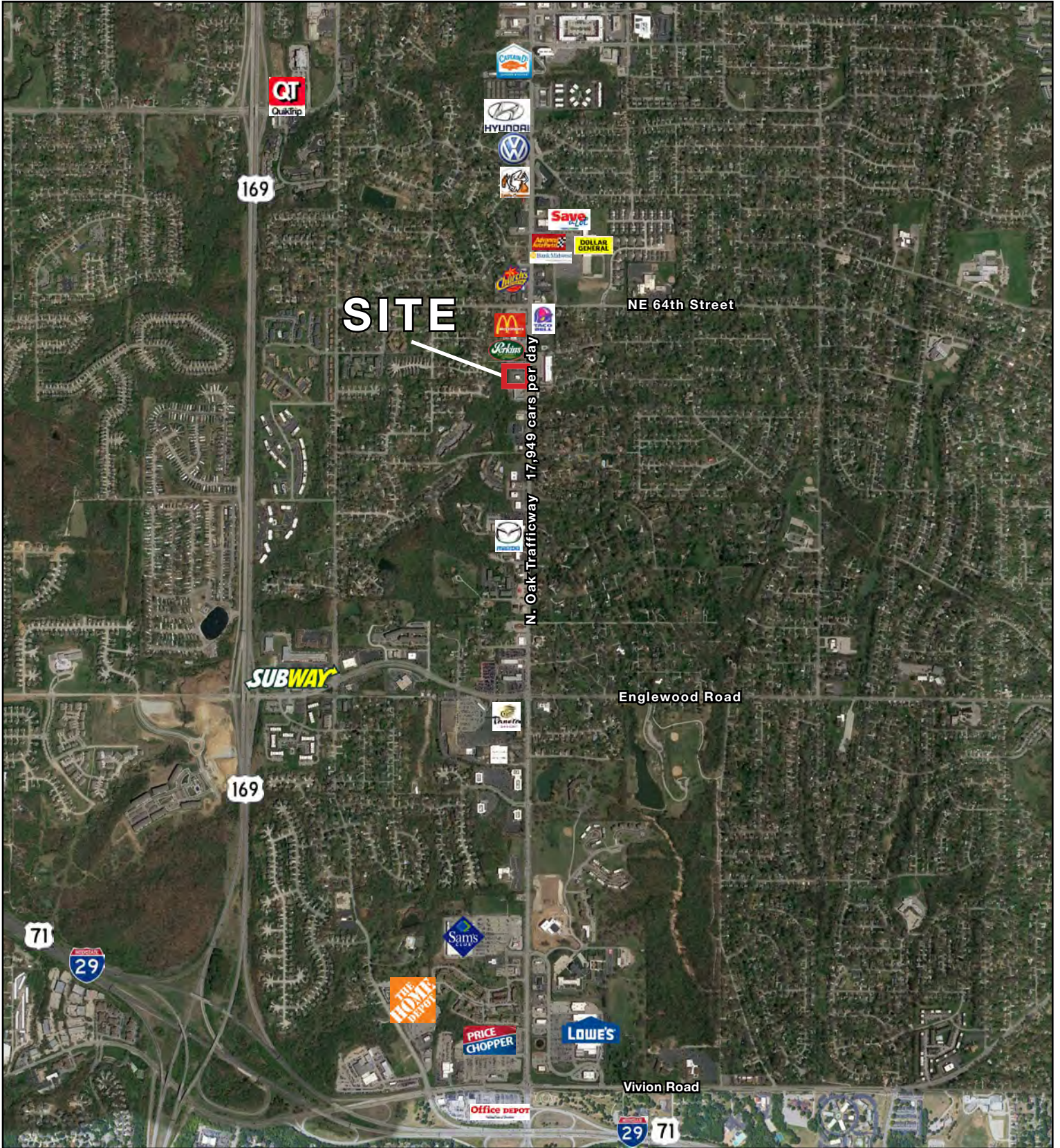
6250 N. Oak Trafficway, Kansas City, Missouri

SITE PLAN



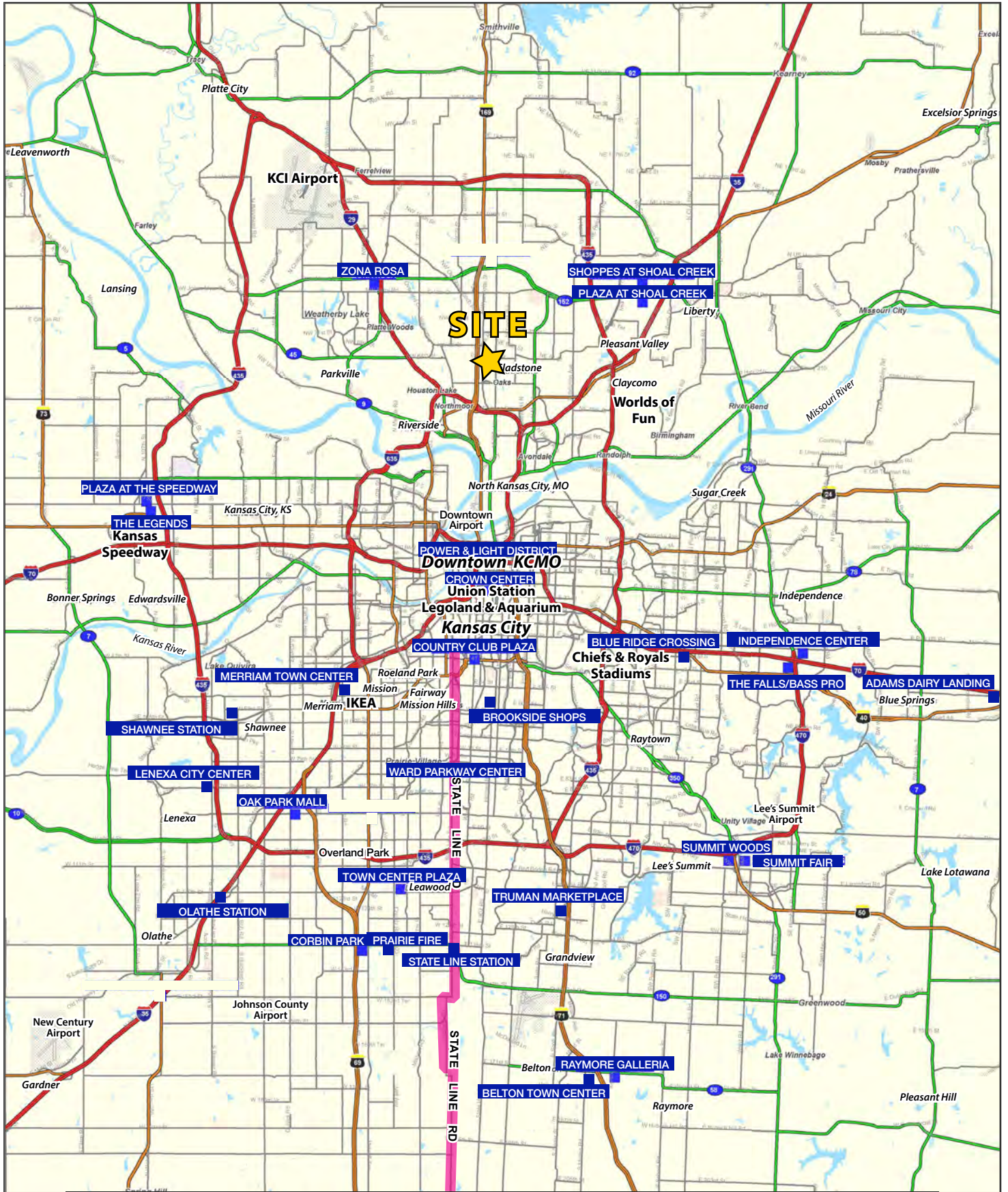
All information furnished regarding property for sale or lease is from sources deemed reliable, but no warranty or representation is made as to the accuracy thereof and the same is subject to errors, omissions, changes of prices, rental or other conditions, prior sale or lease or withdrawal without notice.

AERIAL



NET LEASED INVESTMENT SALE

6250 N. Oak Trafficway, Kansas City, Missouri

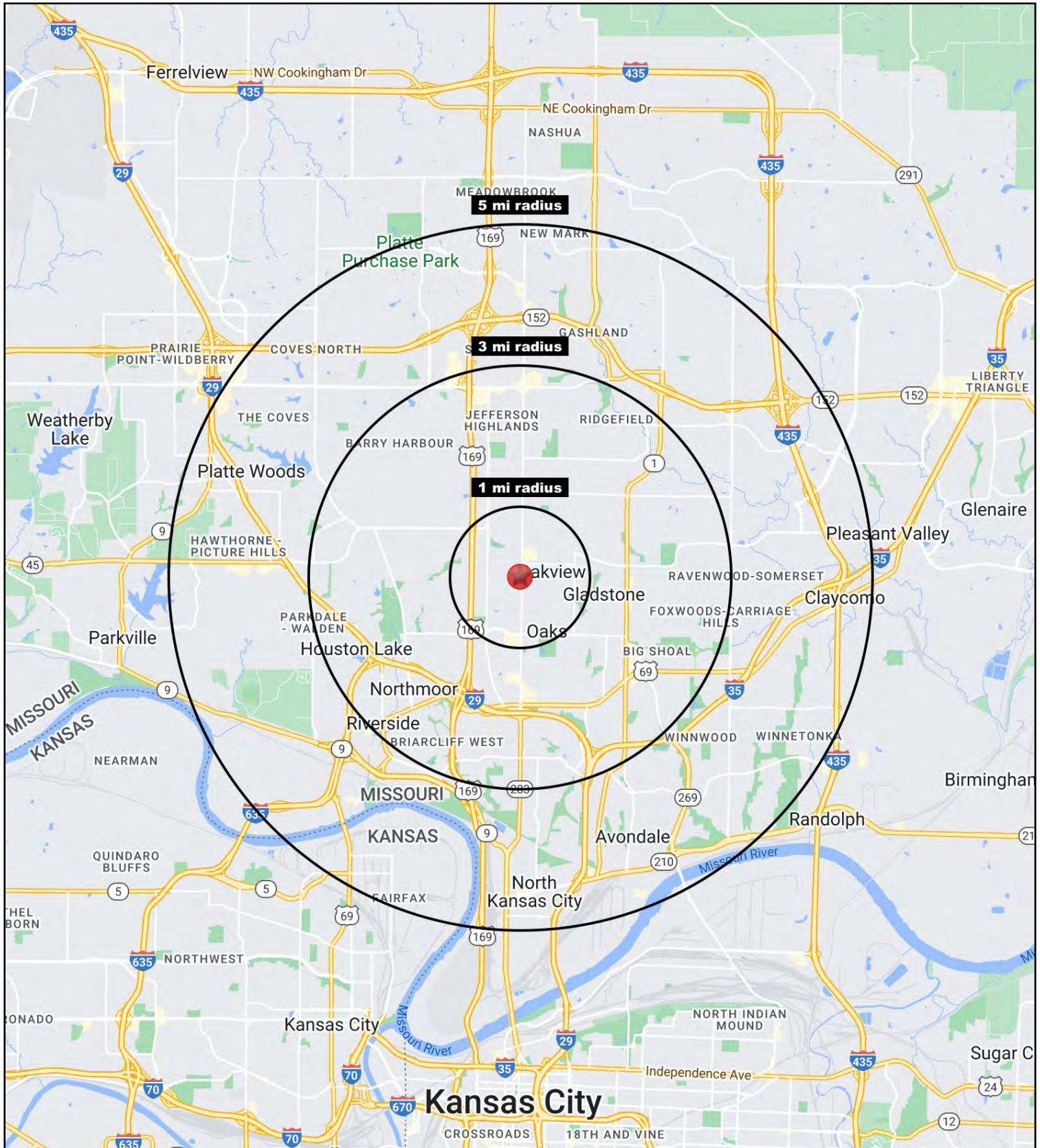


All information furnished regarding property for sale or lease is from sources deemed reliable, but no warranty or representation is made as to the accuracy thereof and the same is subject to errors, omissions, changes of prices, rental or other conditions, prior sale or lease or withdrawal without notice.



NET LEASED INVESTMENT SALE

6250 N. Oak Trafficway, Kansas City, Missouri





NET LEASED INVESTMENT SALE

6250 N. Oak Trafficway, Kansas City, Missouri

6250 N. Oak Trafficway Kansas City, MO 64118	1 mi radius	3 mi radius	5 mi radius
Population			
2022 Estimated Population	11,726	81,636	175,823
2027 Projected Population	11,920	84,514	185,809
2020 Census Population	11,661	80,548	172,417
2010 Census Population	10,582	73,541	150,288
Projected Annual Growth 2022 to 2027	0.3%	0.7%	1.1%
Historical Annual Growth 2010 to 2022	0.9%	0.9%	1.4%
2022 Median Age	37.5	39.4	38.1
Households			
2022 Estimated Households	5,190	35,024	74,573
2027 Projected Households	5,374	36,948	80,457
2020 Census Households	5,125	34,316	72,519
2010 Census Households	4,647	31,582	63,671
Projected Annual Growth 2022 to 2027	0.7%	1.1%	1.6%
Historical Annual Growth 2010 to 2022	1.0%	0.9%	1.4%
Race and Ethnicity			
2022 Estimated White	76.2%	75.1%	75.4%
2022 Estimated Black or African American	10.5%	11.2%	11.3%
2022 Estimated Asian or Pacific Islander	2.9%	4.3%	4.1%
2022 Estimated American Indian or Native Alaskan	0.5%	0.4%	0.4%
2022 Estimated Other Races	9.9%	9.1%	8.8%
2022 Estimated Hispanic	10.1%	9.1%	8.8%
Income			
2022 Estimated Average Household Income	\$57,774	\$76,202	\$78,874
2022 Estimated Median Household Income	\$56,538	\$68,238	\$72,878
2022 Estimated Per Capita Income	\$25,576	\$32,736	\$33,500
Education (Age 25+)			
2022 Estimated Elementary (Grade Level 0 to 8)	2.7%	2.6%	2.2%
2022 Estimated Some High School (Grade Level 9 to 11)	5.2%	4.5%	4.5%
2022 Estimated High School Graduate	30.3%	28.3%	26.7%
2022 Estimated Some College	25.1%	22.7%	22.6%
2022 Estimated Associates Degree Only	9.1%	8.9%	8.7%
2022 Estimated Bachelors Degree Only	18.5%	21.0%	22.7%
2022 Estimated Graduate Degree	9.2%	11.9%	12.6%
Business			
2022 Estimated Total Businesses	411	2,144	4,962
2022 Estimated Total Employees	3,151	20,608	59,498
2022 Estimated Employee Population per Business	7.7	9.6	12.0
2022 Estimated Residential Population per Business	28.5	38.1	35.4

©2023, Sites USA, Chandler, Arizona, 480-491-1112 Demographic Source: Applied Geographic Solutions 11/2022, TIGER Geography - RS1

