



NEW 24 HIGHWAY RETAIL BUILDING

11112-11116 E. US 24 Highway, Sugar Creek, MO



LEASE RATE: \$18/SF NNN | 1,749 SF END CAP

DEMOGRAPHICS

	1 mile	3 miles	5 miles
Estimated Population	10,624	52,468	139,458
Avg. Household Income	\$64,016	\$71,579	\$71,407

- Immediate access, visibility, and signage to US 24 Highway with 17,000 VPD
- Newly white boxed space ready for occupancy, including one bathroom and office
- Co-tenancy with 80th percentile Domino's in the Nation
- Center averages 34k visits/month per Alpha Maps



CLICK HERE TO VIEW MORE LISTING INFORMATION

For More Information Contact:

KARSYN SMITH | 816.412.7372 | karsynsmith@blockandco.com

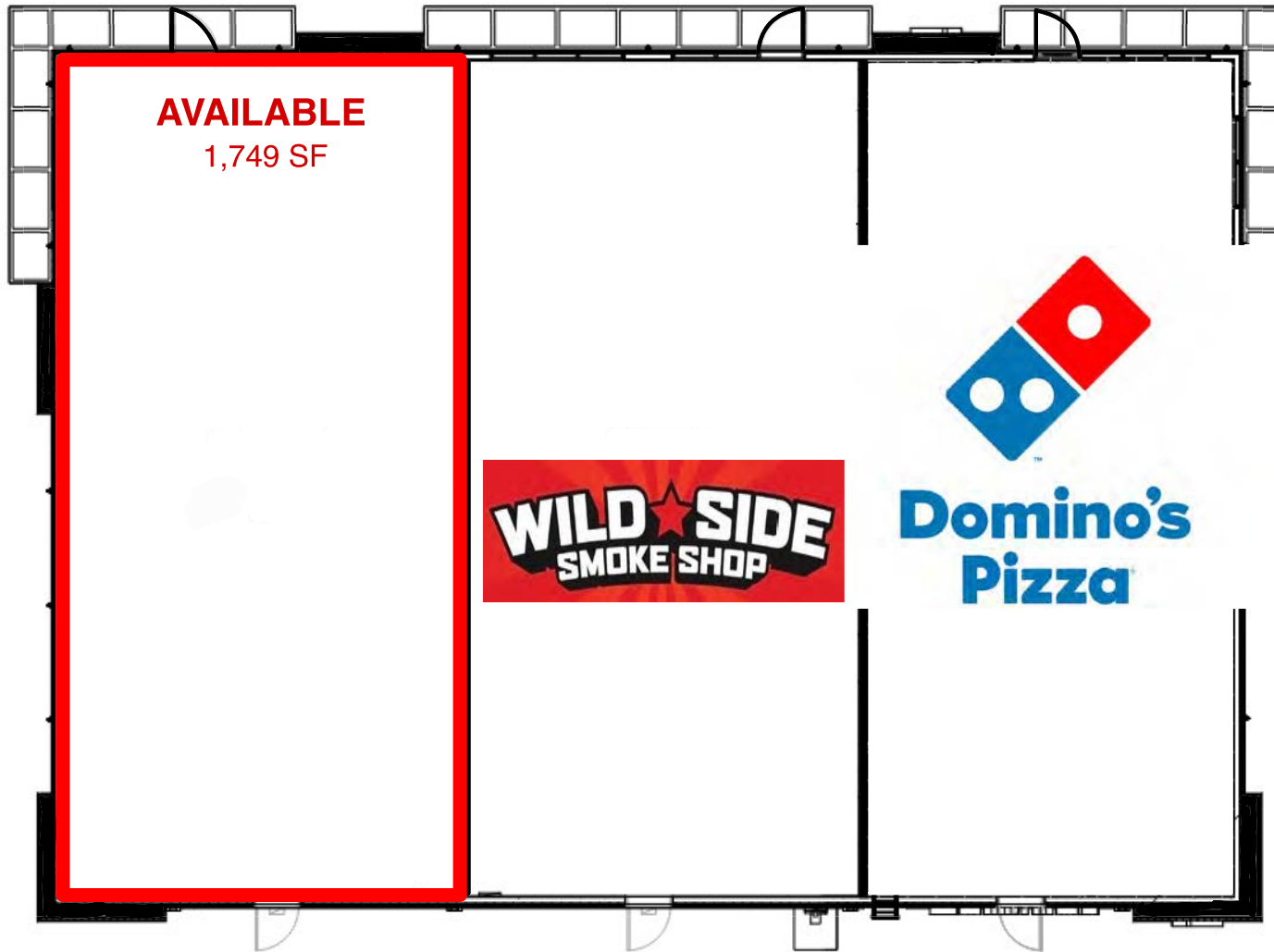
Exclusive Agent



PHOTOS



SITE PLAN

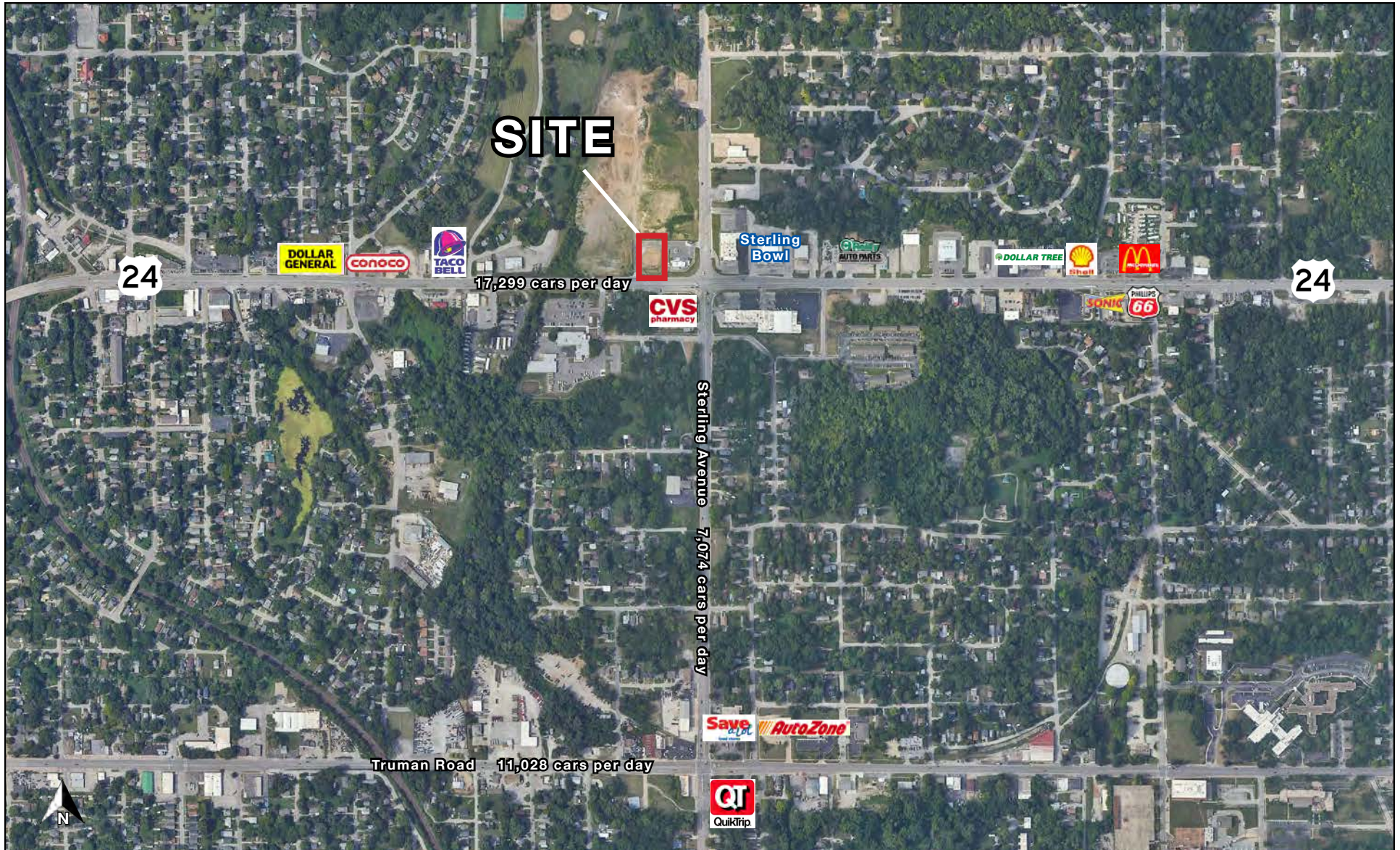




NEW SUGAR CREEK RETAIL BUILDING

11112-11116 E. US 24 Highway, Sugar Creek, MO

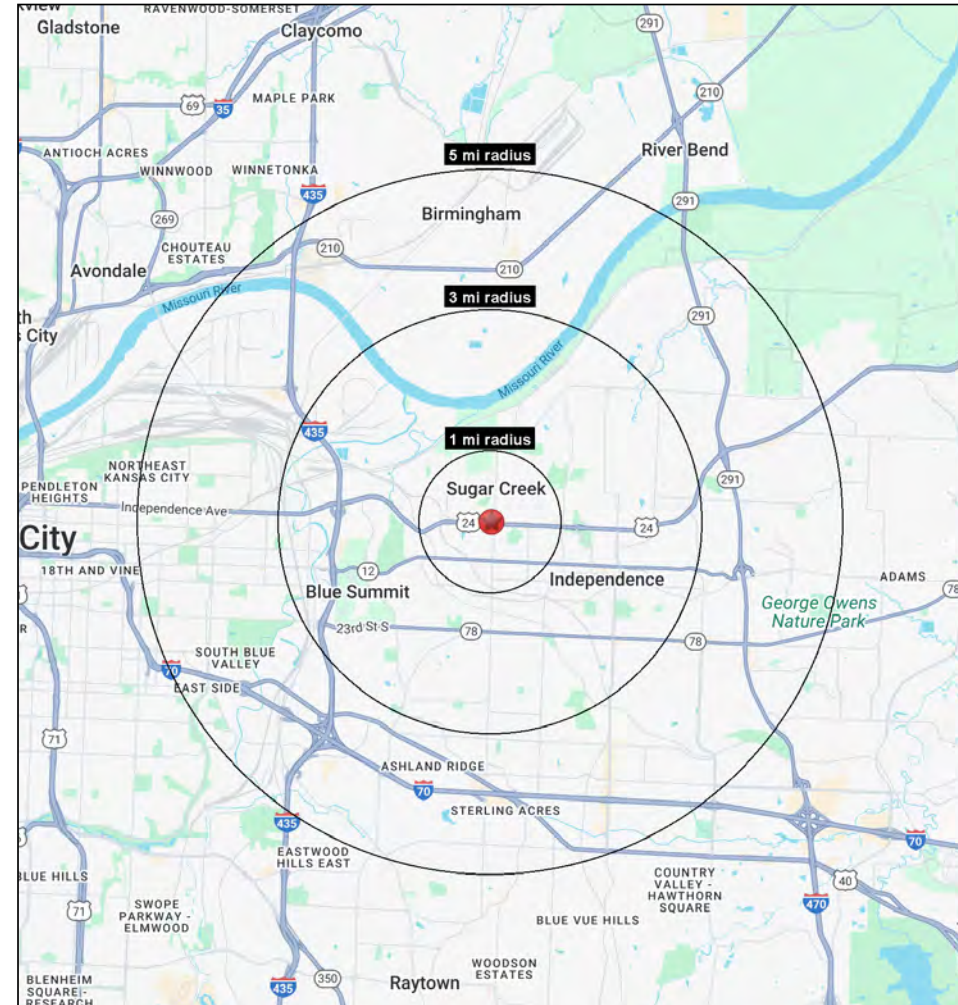
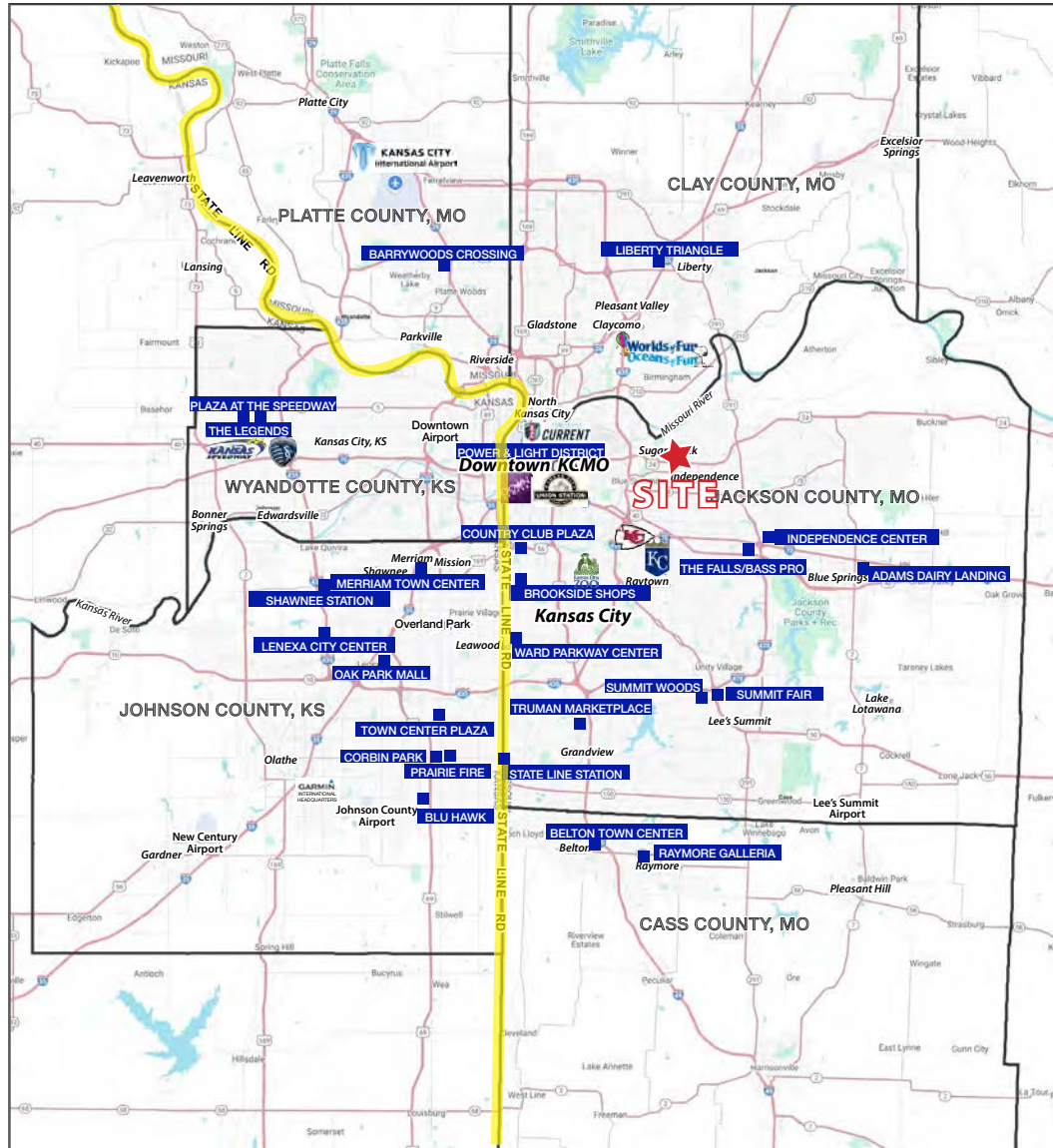
AERIAL





NEW SUGAR CREEK RETAIL BUILDING

11112-11116 E. US 24 Highway, Sugar Creek, MO





NEW SUGAR CREEK RETAIL BUILDING

11112-11116 E. US 24 Highway, Sugar Creek, MO

11112-11116 E US Hwy 24 Sugar Creek, MO 64054	1 mi radius	3 mi radius	5 mi radius
Population			
2025 Estimated Population	10,624	52,468	139,458
2030 Projected Population	10,448	51,800	136,946
2020 Census Population	10,139	51,862	138,001
2010 Census Population	10,046	51,062	136,028
Projected Annual Growth 2025 to 2030	-0.3%	-0.3%	-0.4%
Historical Annual Growth 2010 to 2025	0.4%	0.2%	0.2%
2025 Median Age	39.3	37.6	36.2
Households			
2025 Estimated Households	4,407	21,921	55,637
2030 Projected Households	4,361	21,881	55,132
2020 Census Households	4,289	21,591	55,270
2010 Census Households	4,271	21,340	54,207
Projected Annual Growth 2025 to 2030	-0.2%	-	-0.2%
Historical Annual Growth 2010 to 2025	0.2%	0.2%	0.2%
Race and Ethnicity			
2025 Estimated White	73.2%	71.3%	60.0%
2025 Estimated Black or African American	9.7%	10.6%	15.3%
2025 Estimated Asian or Pacific Islander	1.3%	1.3%	2.7%
2025 Estimated American Indian or Native Alaskan	0.5%	0.7%	0.8%
2025 Estimated Other Races	15.2%	16.1%	21.2%
2025 Estimated Hispanic	15.9%	17.0%	23.0%
Income			
2025 Estimated Average Household Income	\$64,016	\$71,579	\$71,407
2025 Estimated Median Household Income	\$52,623	\$54,636	\$55,503
2025 Estimated Per Capita Income	\$26,839	\$30,061	\$28,580
Education (Age 25+)			
2025 Estimated Elementary (Grade Level 0 to 8)	5.1%	4.7%	5.3%
2025 Estimated Some High School (Grade Level 9 to 11)	12.4%	9.2%	8.9%
2025 Estimated High School Graduate	35.8%	36.7%	36.8%
2025 Estimated Some College	23.3%	25.3%	22.4%
2025 Estimated Associates Degree Only	4.8%	6.7%	8.6%
2025 Estimated Bachelors Degree Only	13.7%	11.6%	11.6%
2025 Estimated Graduate Degree	4.9%	5.9%	6.3%
Business			
2025 Estimated Total Businesses	261	1,535	4,498
2025 Estimated Total Employees	1,943	12,575	50,448
2025 Estimated Employee Population per Business	7.5	8.2	11.2
2025 Estimated Residential Population per Business	40.8	34.2	31.0

©2026, Sites USA, Chandler, Arizona, 480-491-1112 Demographic Source: Applied Geographic Solutions 11/2025, TIGER Geography - RS1

