



RESIDENTIAL DEVELOPMENT LAND

6015 Parallel Parkway, Kansas City, Kansas



SITE

SALE PRICE: \$2,700,000 | 41.465 ACRES

DEMOGRAPHICS

	1 mile	3 miles	5 miles
Estimated Population	7,804	48,176	102,143
Avg. Household Income	\$64,709	\$70,981	\$71,256

- Conceptual plan for 66 lot housing development
- Great location for multi-family or single family homes
- Frontage on Parallel Parkway for potential commercial development
- Close proximity to Community College, High School, Middle School, Elementary School, and Early Childhood Center

 [CLICK HERE TO VIEW MORE LISTING INFORMATION](#)

For More Information Contact: *Exclusive Agent*
GRANT SUMMERS | 816.412.7307 | gsummers@blockandco.com



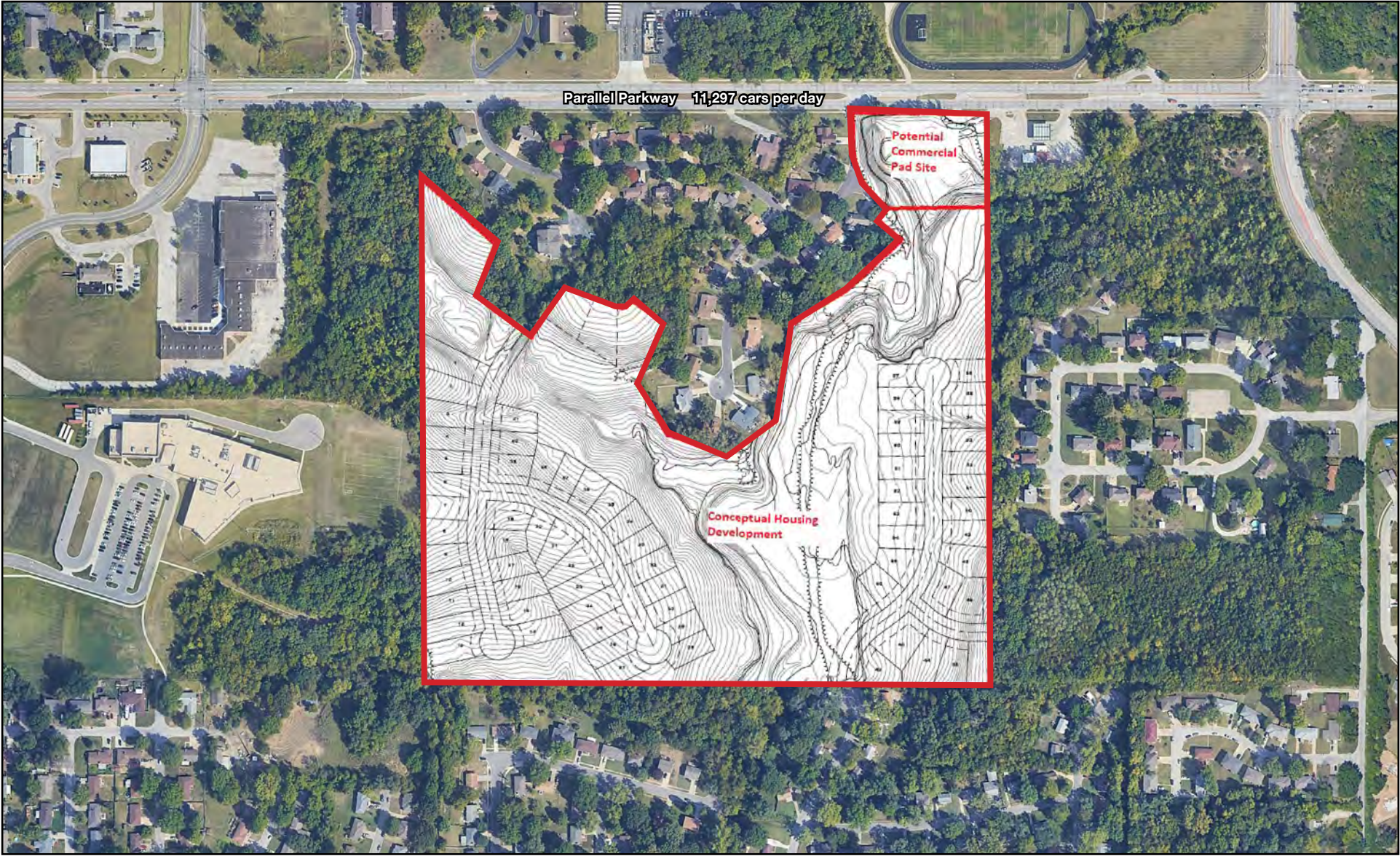
All information furnished regarding property for sale or lease is from sources deemed reliable, but no warranty or representation is made as to the accuracy thereof and the same is subject to errors, omissions, changes of prices, rental or other conditions, prior sale or lease or withdrawal without notice.



RESIDENTIAL DEVELOPMENT LAND

6015 Parallel Parkway, Kansas City, Kansas

AERIAL

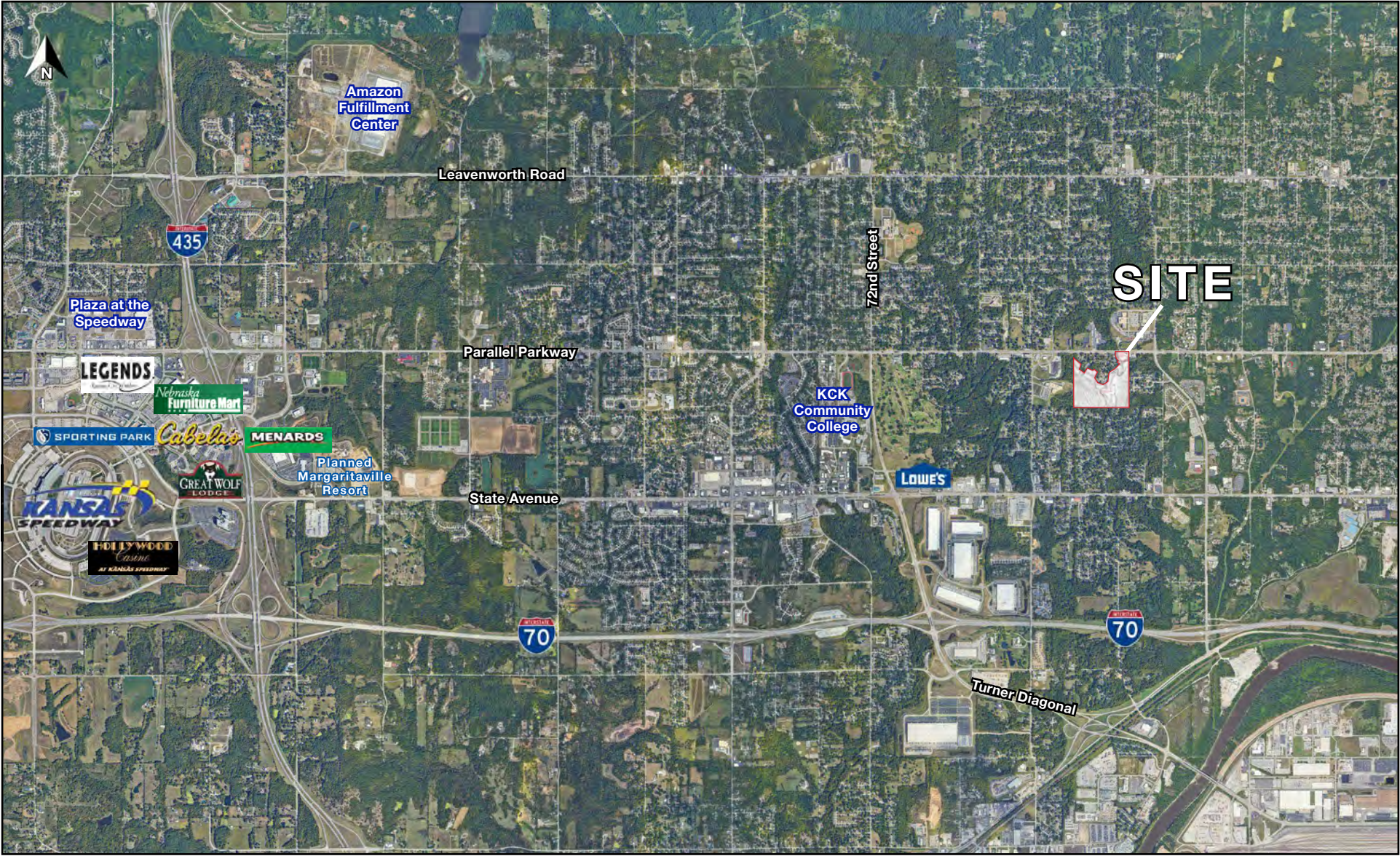




RESIDENTIAL DEVELOPMENT LAND

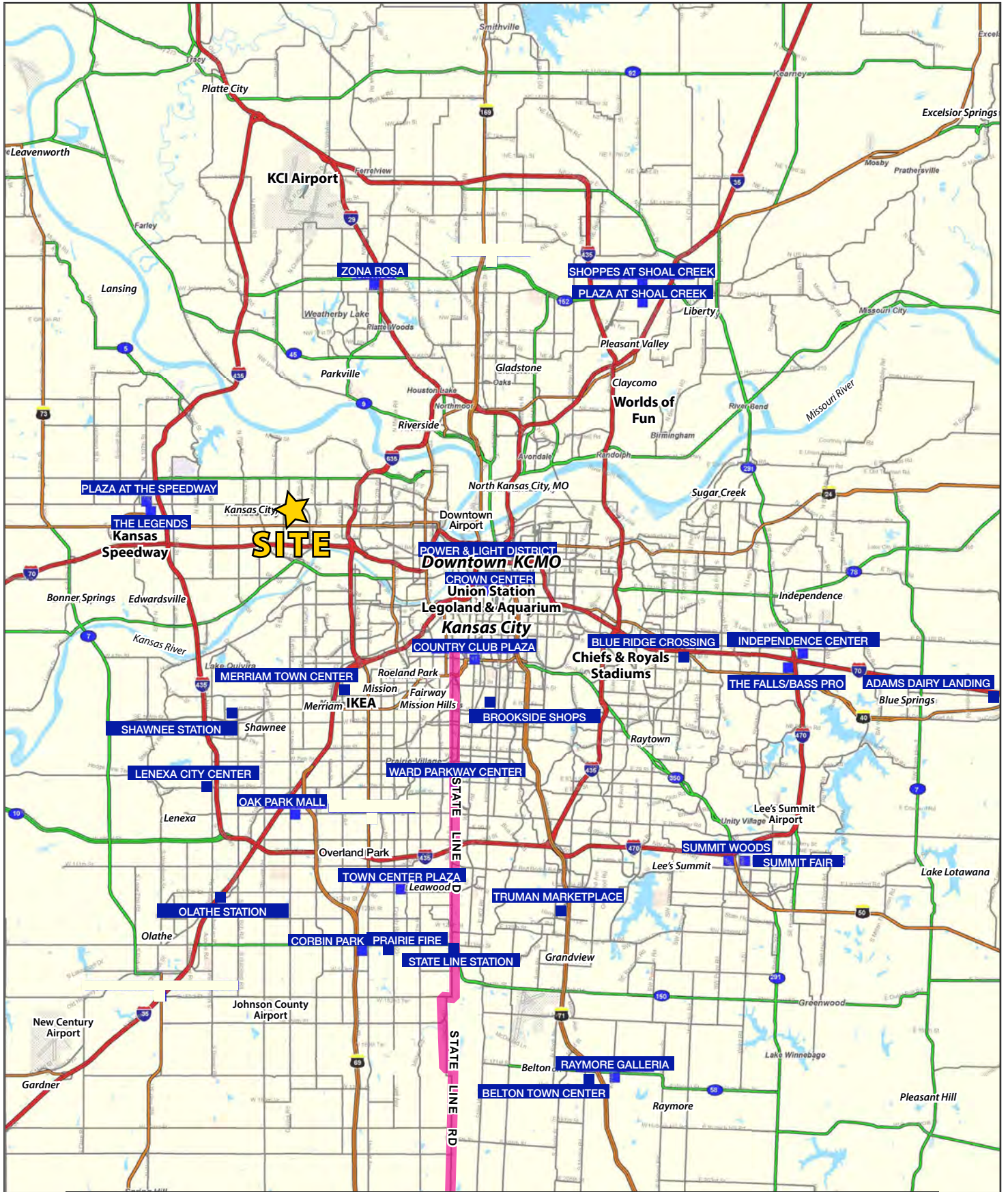
6015 Parallel Parkway, Kansas City, Kansas

AERIAL



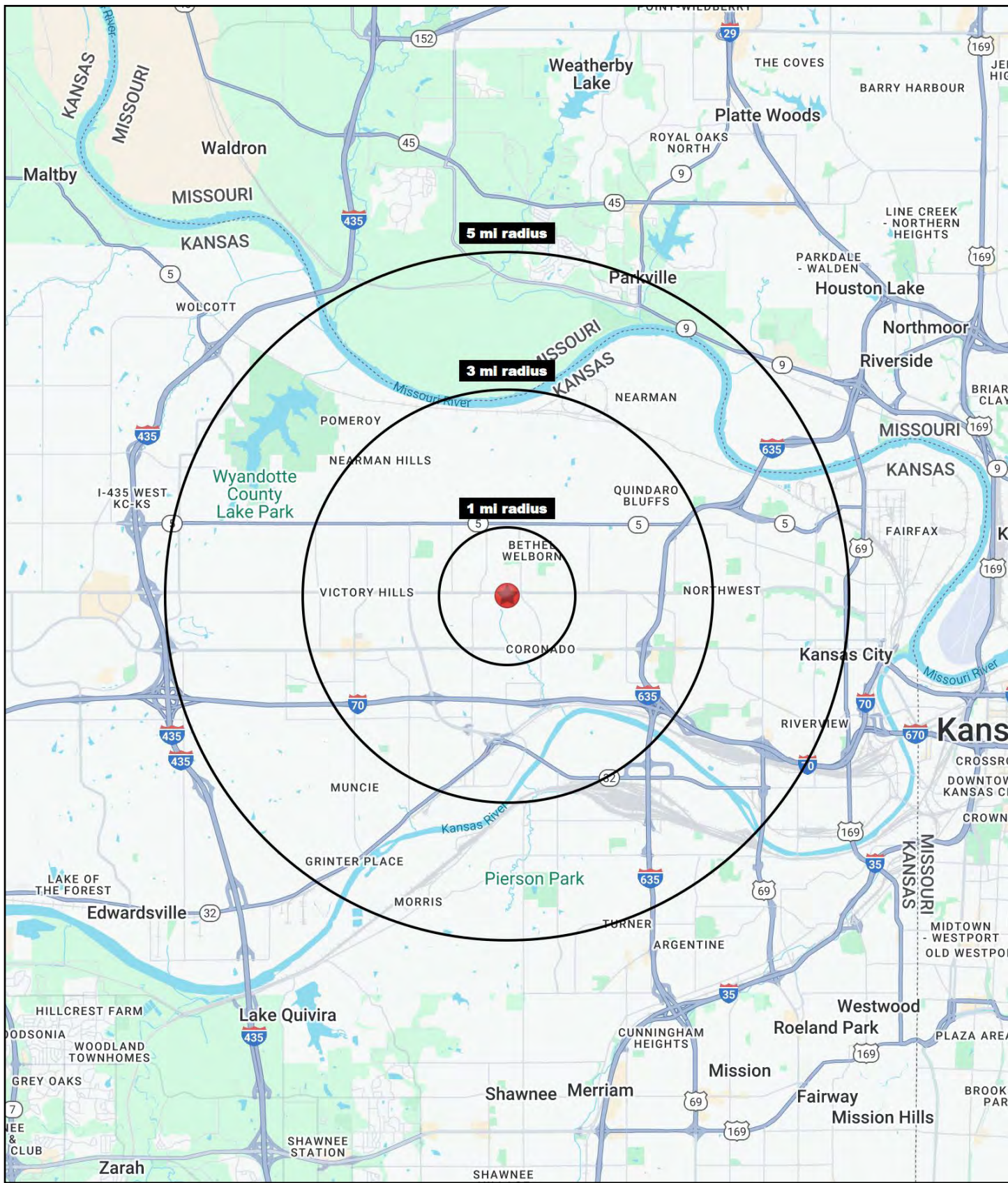
RESIDENTIAL DEVELOPMENT LAND

6015 Parallel Parkway, Kansas City, Kansas



RESIDENTIAL DEVELOPMENT LAND

6015 Parallel Parkway, Kansas City, Kansas





RESIDENTIAL DEVELOPMENT LAND

6015 Parallel Parkway, Kansas City, Kansas

6015 Parallel Parkway Kansas City, KS 66102	1 mi radius	3 mi radius	5 mi radius
Population			
2024 Estimated Population	7,804	48,176	102,143
2029 Projected Population	7,516	47,188	100,516
2020 Census Population	7,268	46,462	100,356
2010 Census Population	6,768	44,692	97,369
Projected Annual Growth 2024 to 2029	-0.7%	-0.4%	-0.3%
Historical Annual Growth 2010 to 2024	1.1%	0.6%	0.4%
2024 Median Age	33.0	33.9	33.4
Households			
2024 Estimated Households	2,726	17,794	36,888
2029 Projected Households	2,650	17,544	36,395
2020 Census Households	2,667	17,713	36,734
2010 Census Households	2,475	17,057	35,695
Projected Annual Growth 2024 to 2029	-0.6%	-0.3%	-0.3%
Historical Annual Growth 2010 to 2024	0.7%	0.3%	0.2%
Race and Ethnicity			
2024 Estimated White	32.7%	36.8%	38.3%
2024 Estimated Black or African American	35.0%	29.8%	25.2%
2024 Estimated Asian or Pacific Islander	9.8%	9.3%	6.9%
2024 Estimated American Indian or Native Alaskan	0.9%	0.9%	1.0%
2024 Estimated Other Races	21.6%	23.2%	28.6%
2024 Estimated Hispanic	27.0%	28.5%	35.0%
Income			
2024 Estimated Average Household Income	\$64,709	\$70,981	\$71,256
2024 Estimated Median Household Income	\$51,512	\$56,093	\$56,577
2024 Estimated Per Capita Income	\$22,725	\$26,321	\$25,813
Education (Age 25+)			
2024 Estimated Elementary (Grade Level 0 to 8)	12.3%	9.9%	10.4%
2024 Estimated Some High School (Grade Level 9 to 11)	11.0%	11.0%	11.3%
2024 Estimated High School Graduate	28.8%	29.9%	31.6%
2024 Estimated Some College	25.8%	23.4%	21.0%
2024 Estimated Associates Degree Only	9.9%	8.6%	8.8%
2024 Estimated Bachelors Degree Only	6.4%	10.7%	11.1%
2024 Estimated Graduate Degree	6.0%	6.4%	5.9%
Business			
2024 Estimated Total Businesses	103	970	2,232
2024 Estimated Total Employees	2,243	16,080	34,743
2024 Estimated Employee Population per Business	21.8	16.6	15.6
2024 Estimated Residential Population per Business	75.9	49.7	45.8

©2025, Sites USA, Chandler, Arizona, 480-491-1112 Demographic Source: Applied Geographic Solutions 11/2024, TIGER Geography - RS1

