



# SECOND GENERATION KITCHEN

8133 Wornall Road, Kansas City, MO



Wornall Road 15,000 cars per day

## CALL FOR PRICING | 1,100 SF FOR LEASE

### DEMOGRAPHICS

	1 mile	3 miles	5 miles
Estimated Population	12,424	90,050	230,347
Avg. Household Income	\$100,761	\$143,369	\$128,261

- Second Generation Kitchen including 8' hood system, grease trap, gas oven, 3 compartment sink
- Neighboring businesses include: Taco Bell, Go Car Wash, Sonic, Andy's Frozen Custard, Summit Grill, Jovitos's Italian Café & Deli, Waldo Pizza, Chipotle, and Pickleman's Gourmet Cafe
- Minutes from the premier 75th & Waldo corridor and located within the Waldo business association
- Dedicated Parking lot with loading ramp
- Excellent visibility and access with 70' of frontage on Wornall Road
- Exterior Signage available
- Heavily traveled corridor with over 15,000 cars daily



CLICK HERE TO VIEW MORE LISTING INFORMATION

For More Information Contact:

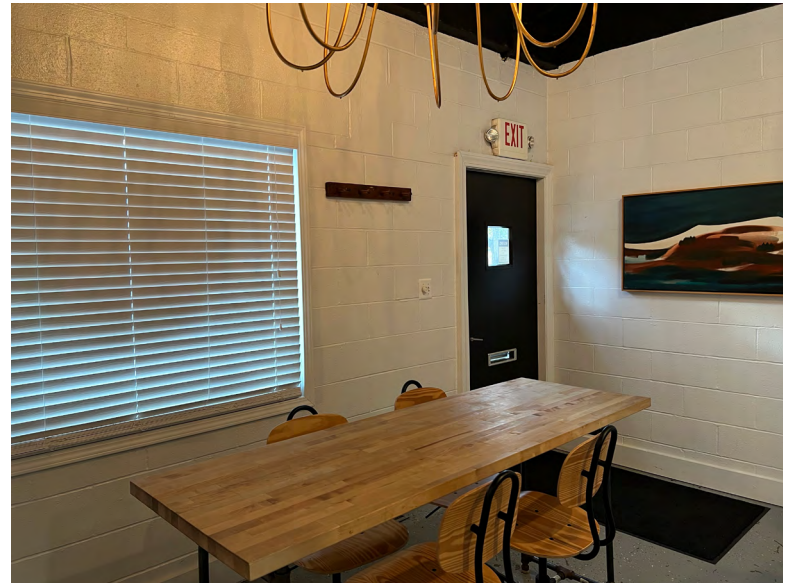
GARRETT COHOON | 816.412.7315 | [gcohoon@blockandco.com](mailto:gcohoon@blockandco.com)

DAKOTA GRIZZLE | 816.412.7395 | [dgrizzle@blockandco.com](mailto:dgrizzle@blockandco.com)

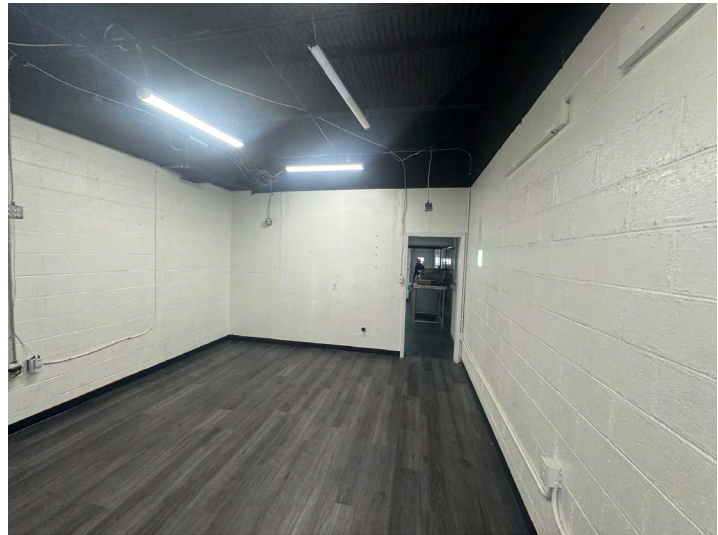
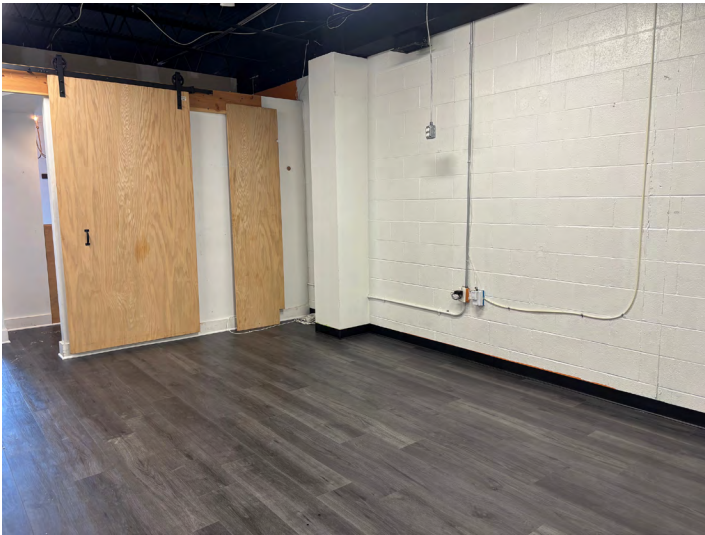
Exclusive Agents



## PHOTOS



## PHOTOS

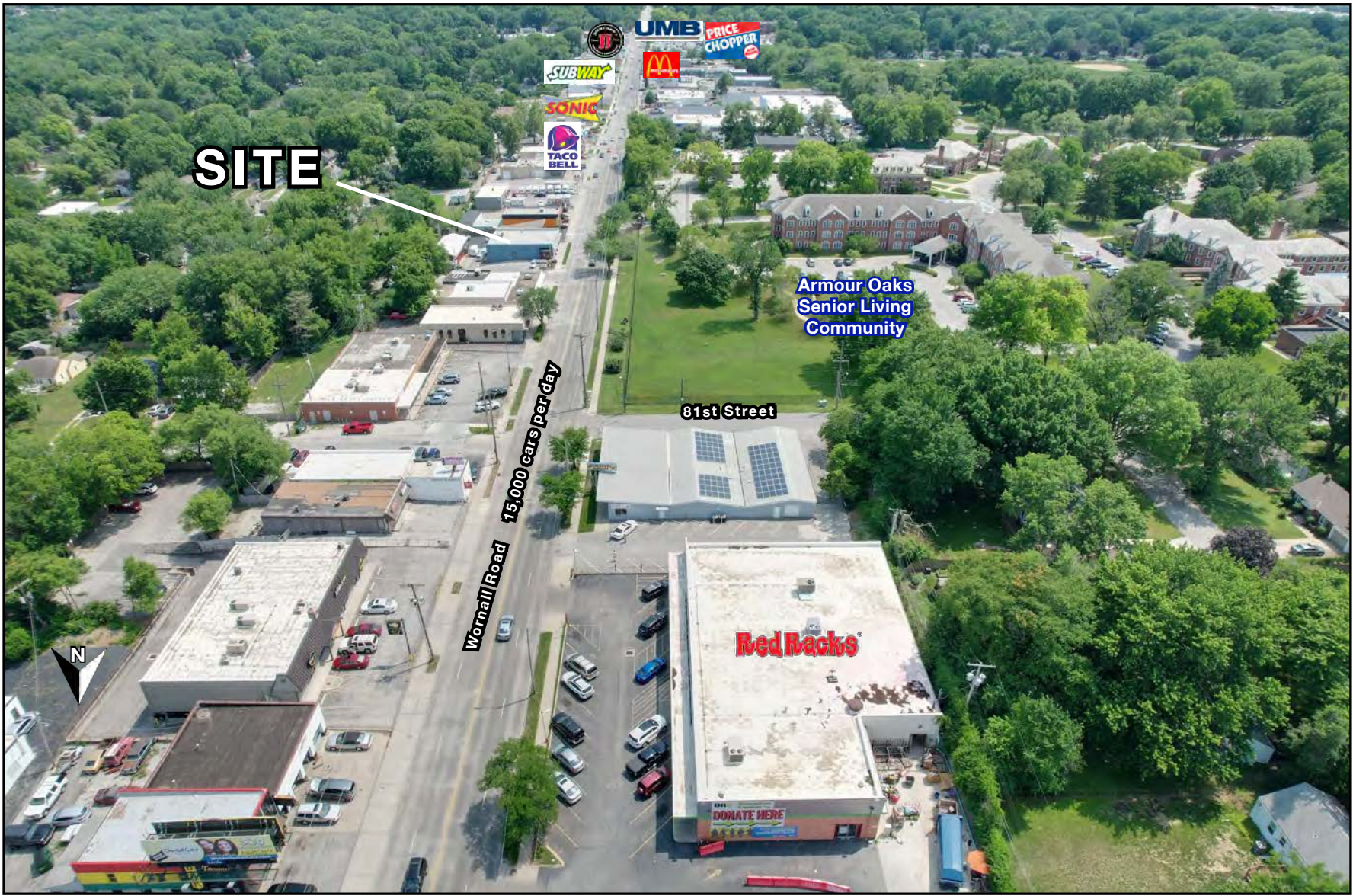




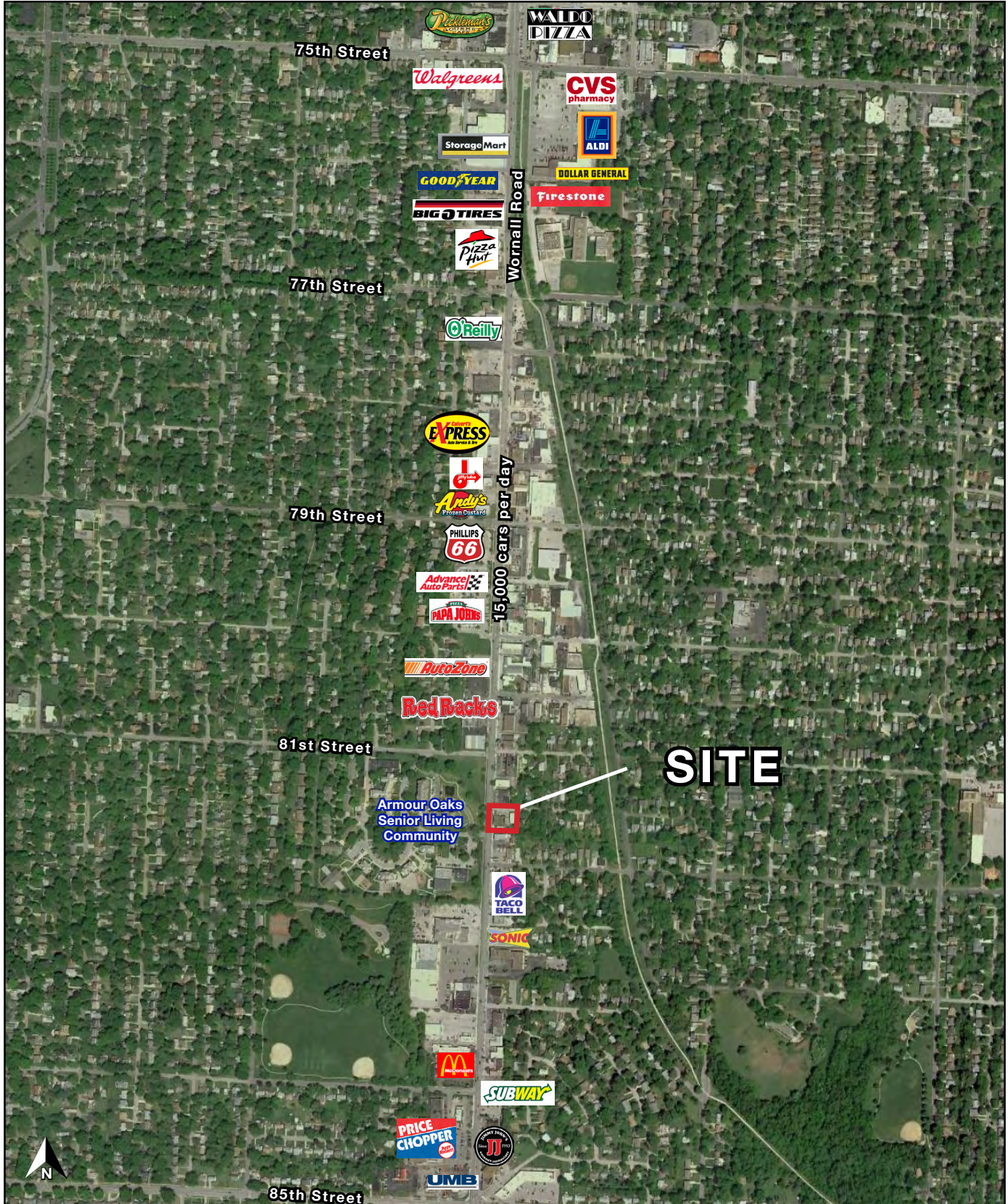
# SECOND GENERATION KITCHEN

8133 Wornall Road, Kansas City, MO

AERIAL



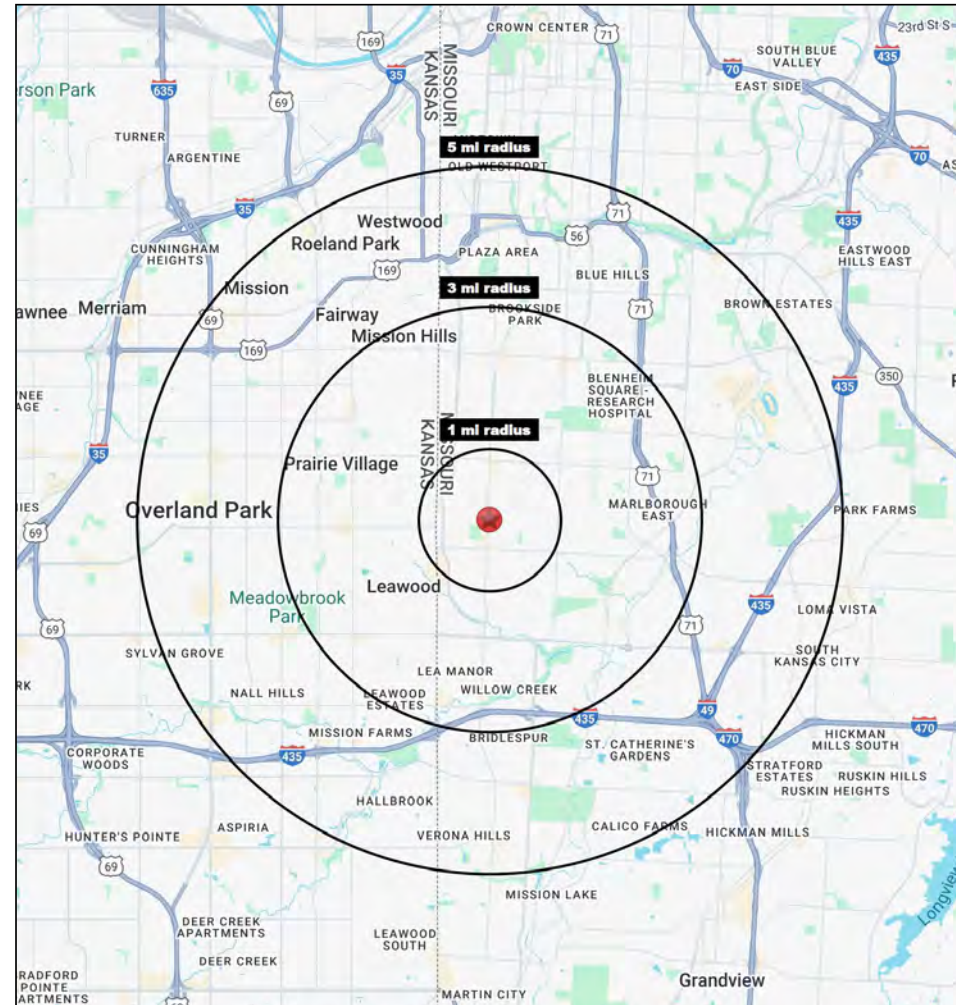
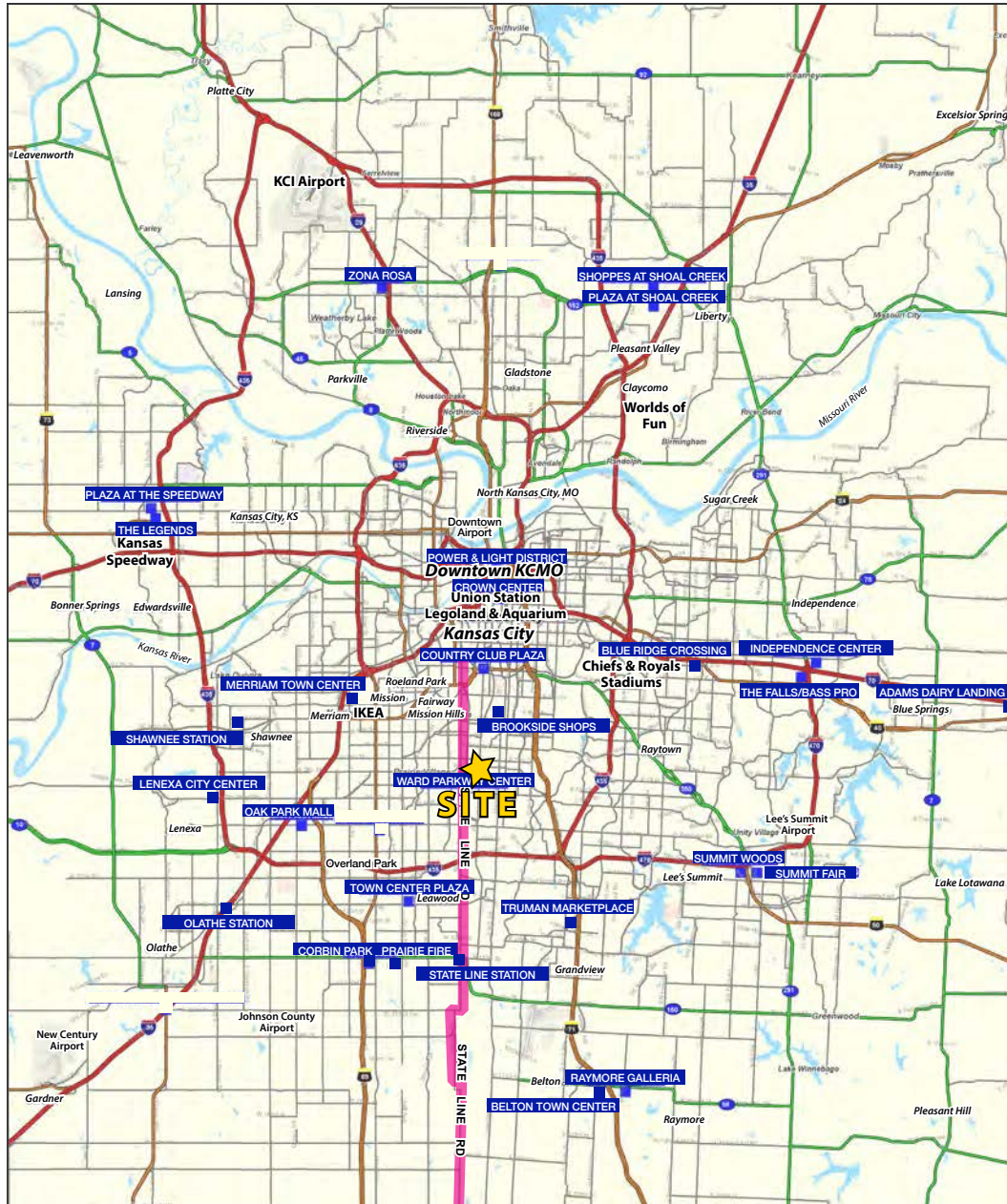
## AERIAL





# SECOND GENERATION KITCHEN

8133 Wornall Road, Kansas City, MO





# SECOND GENERATION KITCHEN

8133 Wornall Road, Kansas City, MO

8131-8133 Wornall Rd Kansas City, MO 64114	1 mi radius	3 mi radius	5 mi radius
<b>Population</b>			
2024 Estimated Population	12,424	90,050	230,347
2029 Projected Population	12,165	89,530	229,721
2020 Census Population	12,788	89,957	229,569
2010 Census Population	12,466	87,112	220,391
Projected Annual Growth 2024 to 2029	-0.4%	-0.1%	-
Historical Annual Growth 2010 to 2024	-	0.2%	0.3%
2024 Median Age	36.5	39.3	38.7
<b>Households</b>			
2024 Estimated Households	6,534	40,733	107,109
2029 Projected Households	6,393	40,629	107,276
2020 Census Households	6,733	40,445	104,432
2010 Census Households	6,454	39,068	99,751
Projected Annual Growth 2024 to 2029	-0.4%	-	-
Historical Annual Growth 2010 to 2024	-	0.3%	0.5%
<b>Race and Ethnicity</b>			
2024 Estimated White	73.9%	70.9%	69.6%
2024 Estimated Black or African American	15.9%	20.9%	20.1%
2024 Estimated Asian or Pacific Islander	1.8%	1.6%	2.4%
2024 Estimated American Indian or Native Alaskan	0.3%	0.3%	0.3%
2024 Estimated Other Races	8.0%	6.3%	7.6%
2024 Estimated Hispanic	7.6%	5.9%	7.5%
<b>Income</b>			
2024 Estimated Average Household Income	\$100,761	\$143,369	\$128,261
2024 Estimated Median Household Income	\$80,812	\$105,594	\$96,075
2024 Estimated Per Capita Income	\$53,042	\$64,924	\$59,770
<b>Education (Age 25+)</b>			
2024 Estimated Elementary (Grade Level 0 to 8)	1.1%	1.4%	1.5%
2024 Estimated Some High School (Grade Level 9 to 11)	3.6%	2.9%	3.0%
2024 Estimated High School Graduate	16.3%	14.5%	16.3%
2024 Estimated Some College	18.6%	17.4%	18.5%
2024 Estimated Associates Degree Only	6.4%	5.7%	6.1%
2024 Estimated Bachelors Degree Only	35.3%	32.9%	32.0%
2024 Estimated Graduate Degree	18.9%	25.2%	22.6%
<b>Business</b>			
2024 Estimated Total Businesses	800	4,360	11,775
2024 Estimated Total Employees	6,414	40,596	140,641
2024 Estimated Employee Population per Business	8.0	9.3	11.9
2024 Estimated Residential Population per Business	15.5	20.7	19.6

©2025. Sites USA. Chandler, Arizona. 480-491-1112 Demographic Source: Applied Geographic Solutions 11/2024. TIGER Geographv - RS1

