



OFFICE SPACE FOR LEASE

6301 Main Street, Kansas City, Missouri




Lease Rate: \$900/Month MG | 813 SF Space

DEMOGRAPHICS

	1 mile	3 miles	5 miles
Estimated Population	15,463	119,321	251,877
Avg. Household Income	\$188,634	\$132,517	\$114,839

- Prime location and visibility on 63rd Street
- Private parking behind building
- Located in the heart of Brookside
- Private exterior entrance
- All utilities paid
- Private kitchen and restroom

 [CLICK HERE TO VIEW MORE LISTING INFORMATION](#)

[For More Information Contact:](#)

CAMREN SINCLAIR | 816.412.7352 | csinclair@blockandco.com

DANIEL BROCATO | 816.412.7330 | dbrocato@blockandco.com

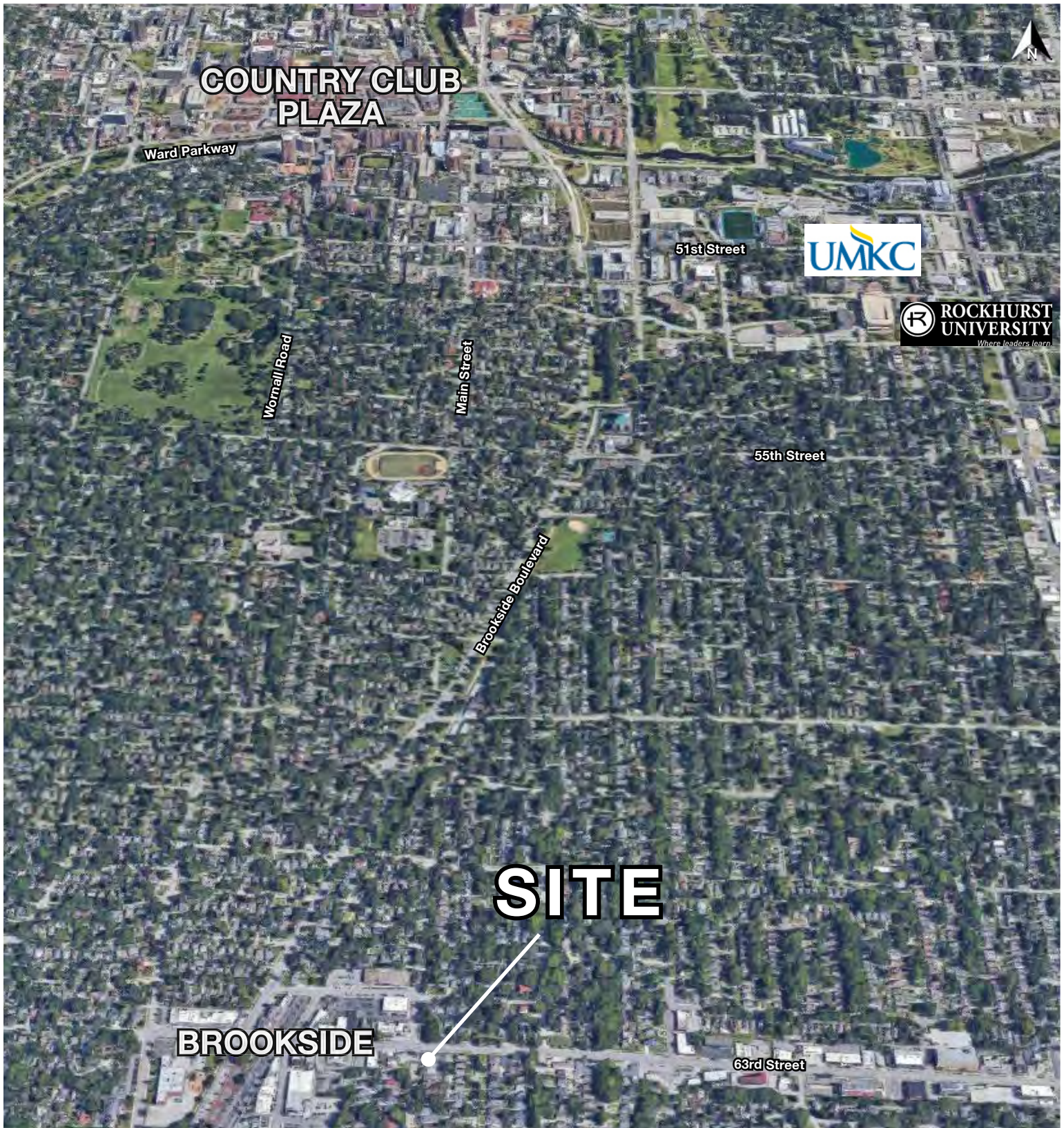
Exclusive Agents



PHOTOS



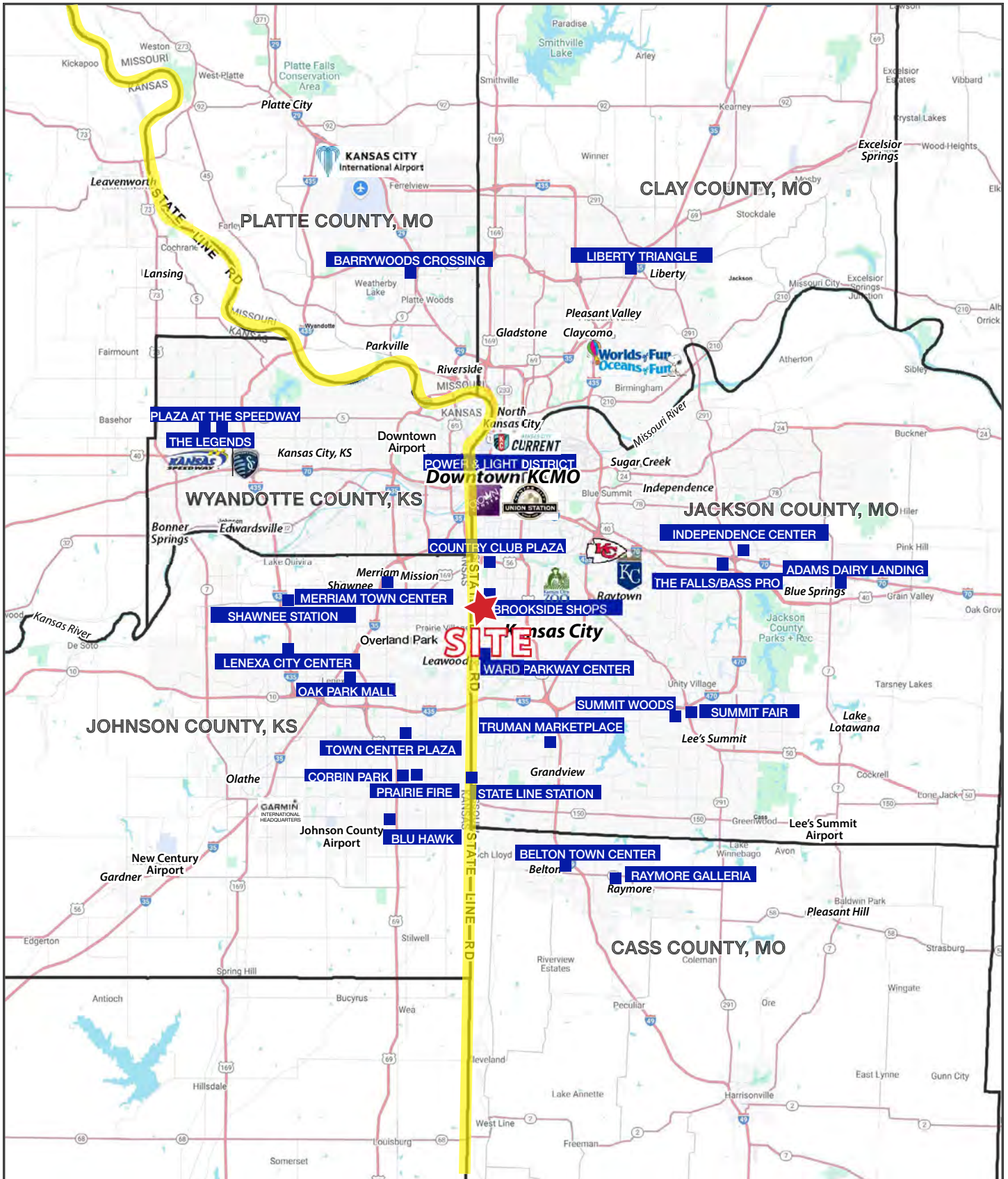
AERIAL





OFFICE SPACE FOR LEASE

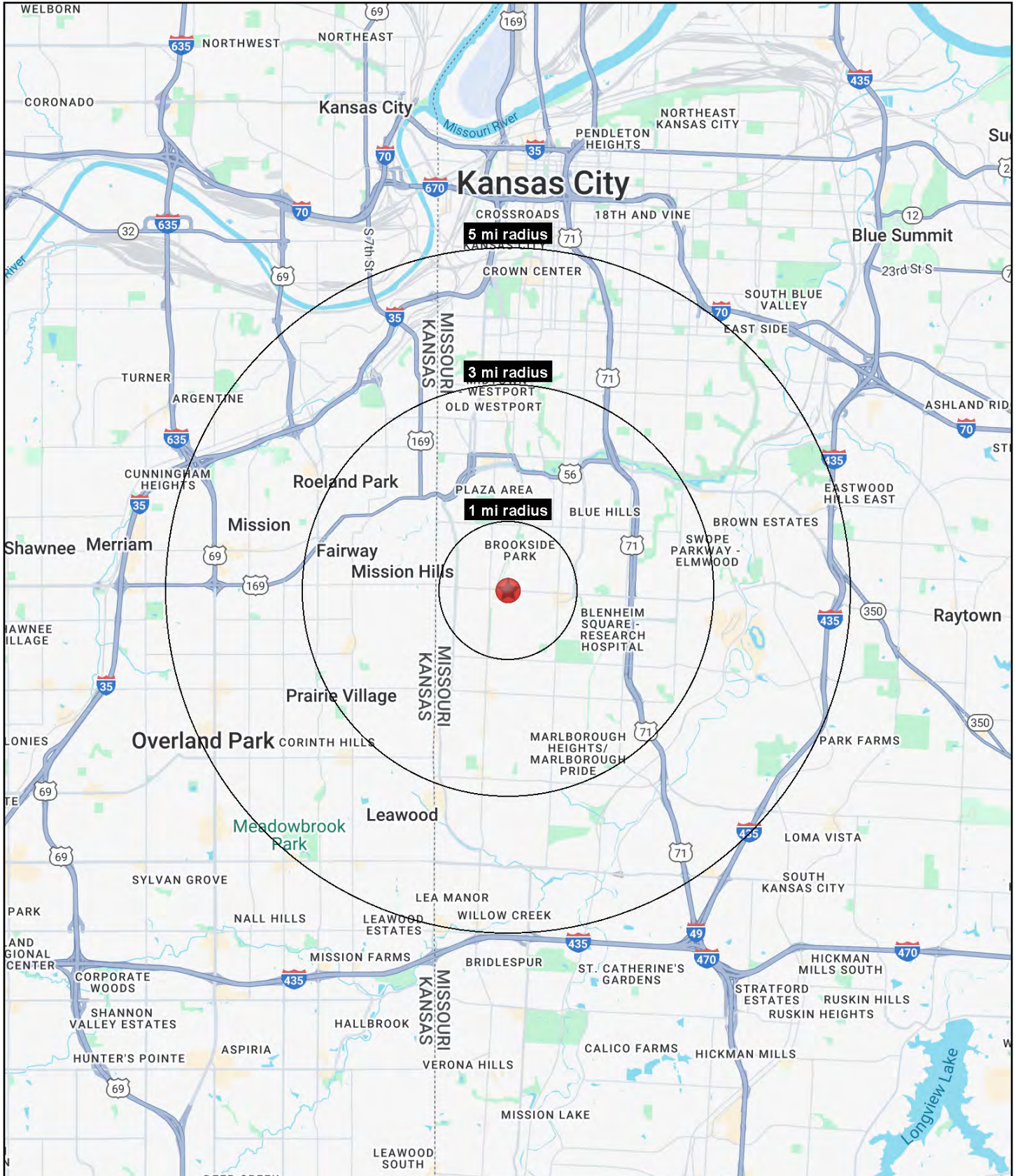
6301 Main Street, Kansas City, Missouri





OFFICE SPACE FOR LEASE

6301 Main Street, Kansas City, Missouri





OFFICE SPACE FOR LEASE

6301 Main Street, Kansas City, Missouri

6301 Main Street Kansas City, MO 64113	1 mi radius	3 mi radius	5 mi radius
Population			
2025 Estimated Population	15,463	119,321	251,877
2030 Projected Population	15,586	118,457	252,295
2020 Census Population	15,931	118,673	244,371
2010 Census Population	15,219	114,934	234,702
Projected Annual Growth 2025 to 2030	0.2%	-0.1%	-
Historical Annual Growth 2010 to 2025	0.1%	0.3%	0.5%
2025 Median Age	40.3	36.9	36.7
Households			
2025 Estimated Households	6,749	55,299	118,321
2030 Projected Households	6,857	55,624	120,288
2020 Census Households	6,930	54,236	112,532
2010 Census Households	6,519	52,355	107,538
Projected Annual Growth 2025 to 2030	0.3%	0.1%	0.3%
Historical Annual Growth 2010 to 2025	0.2%	0.4%	0.7%
Race and Ethnicity			
2025 Estimated White	84.6%	63.9%	61.3%
2025 Estimated Black or African American	7.9%	26.0%	26.1%
2025 Estimated Asian or Pacific Islander	1.7%	2.1%	2.4%
2025 Estimated American Indian or Native Alaskan	0.2%	0.3%	0.4%
2025 Estimated Other Races	5.6%	7.6%	9.8%
2025 Estimated Hispanic	5.4%	7.5%	10.2%
Income			
2025 Estimated Average Household Income	\$188,634	\$132,517	\$114,839
2025 Estimated Median Household Income	\$148,096	\$95,480	\$85,096
2025 Estimated Per Capita Income	\$82,380	\$61,567	\$54,099
Education (Age 25+)			
2025 Estimated Elementary (Grade Level 0 to 8)	0.8%	1.7%	2.3%
2025 Estimated Some High School (Grade Level 9 to 11)	0.9%	3.5%	4.0%
2025 Estimated High School Graduate	7.4%	17.7%	19.5%
2025 Estimated Some College	10.1%	16.3%	18.4%
2025 Estimated Associates Degree Only	3.5%	5.2%	5.9%
2025 Estimated Bachelors Degree Only	37.2%	31.3%	29.4%
2025 Estimated Graduate Degree	40.1%	24.3%	20.7%
Business			
2025 Estimated Total Businesses	970	6,590	13,204
2025 Estimated Total Employees	6,157	60,664	151,868
2025 Estimated Employee Population per Business	6.3	9.2	11.5
2025 Estimated Residential Population per Business	15.9	18.1	19.1

©2025, Sites USA, Chandler, Arizona, 480-491-1112 Demographic Source: Applied Geographic Solutions 11/2025, TIGER Geography - RS1

