



# PRIME RETAIL SPACE - BARRY ROAD

6001-6005 NW Barry Road, Kansas City, Missouri

**4,096 SF  
SPACE  
FOR LEASE**



## 4,096 SF IN-LINE SPACE FOR LEASE

### DEMOGRAPHICS

	1 mile	3 miles	5 miles
Estimated Population	10,764	56,710	123,216
Avg. Household Income	\$95,904	\$92,443	\$90,252

- Former Pier 1 Imports space that has been demised
- Located on the strong retail corridor of I-29 & NW Barry Road
- Over 700,000 SF of existing retail and restaurants at this intersection
- Approximately 102,000 cars per day at this intersection
- Excellent visibility and access

 **CLICK HERE TO VIEW MORE LISTING INFORMATION**

For More Information Contact:

*Exclusive Agents*

**PHIL PECK, CCIM | 816.412.7364 | [ppeck@blockandco.com](mailto:ppeck@blockandco.com)**

**DAVID BLOCK | 816.412.7400 | [dblock@blockandco.com](mailto:dblock@blockandco.com)**





# PRIME RETAIL SPACE - BARRY ROAD

6001-6005 NW Barry Road, Kansas City, Missouri

4,096 SF  
SPACE  
FOR LEASE

AERIAL



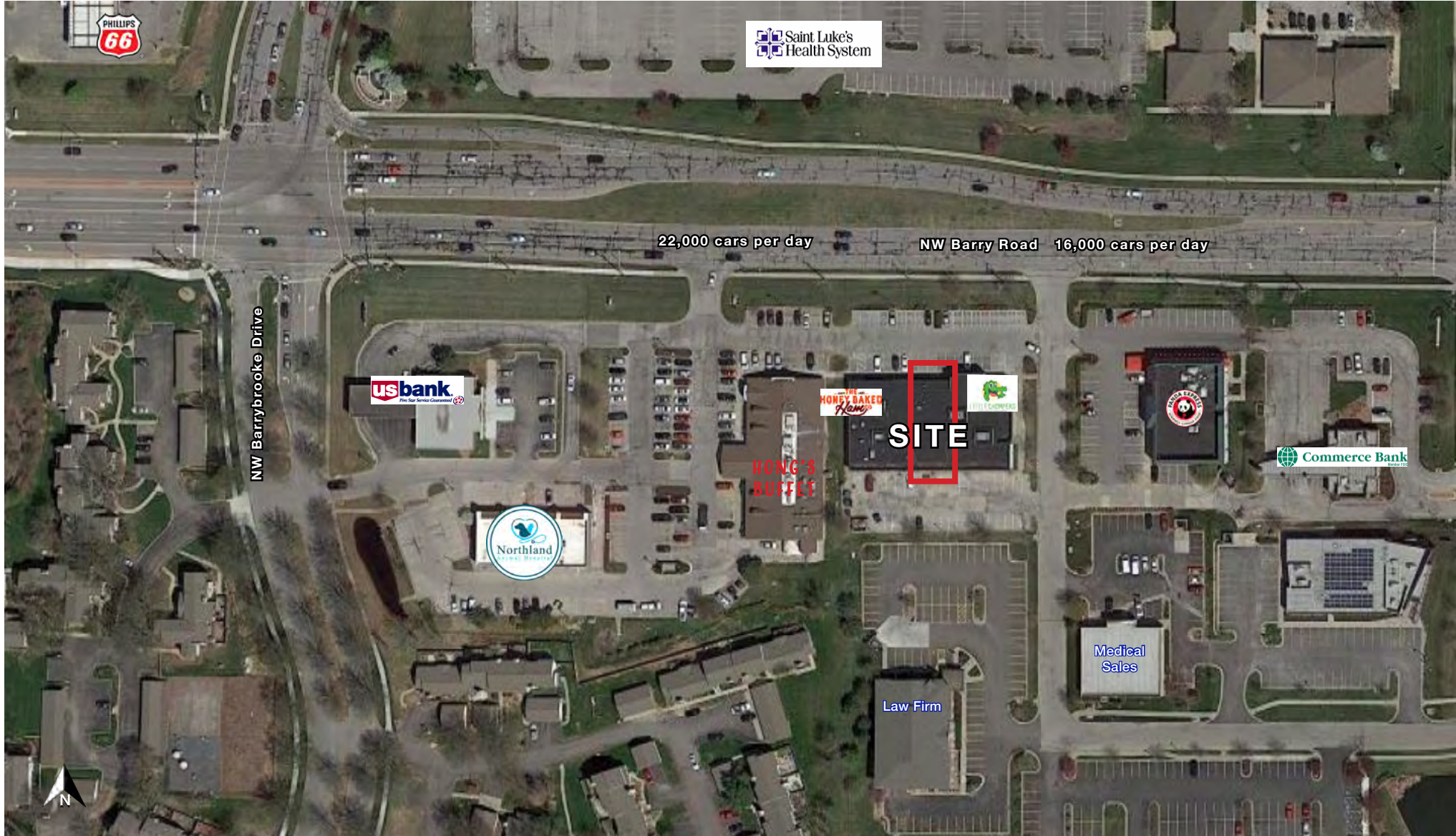


# PRIME RETAIL SPACE - BARRY ROAD

6001-6005 NW Barry Road, Kansas City, Missouri

4,096 SF  
SPACE  
FOR LEASE

## AERIAL





# PRIME RETAIL SPACE - BARRY ROAD

6001-6005 NW Barry Road, Kansas City, Missouri

4,096 SF  
SPACE  
FOR LEASE

## DRONE AERIAL





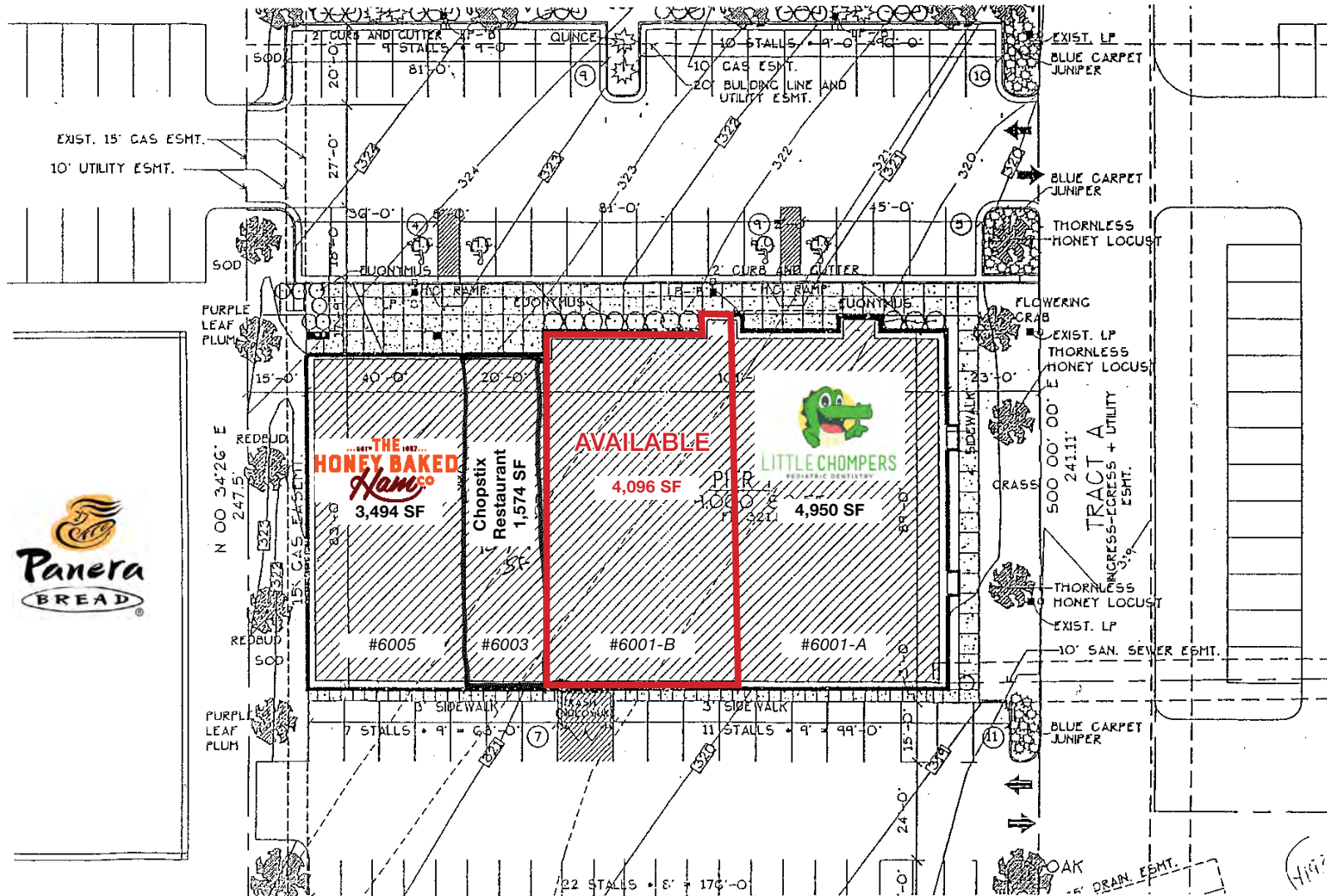
# PRIME RETAIL SPACE - BARRY ROAD

6001-6005 NW Barry Road, Kansas City, Missouri

4,096 SF  
SPACE  
FOR LEASE

## PLAN

NW Barry Road 17,875 cars per day

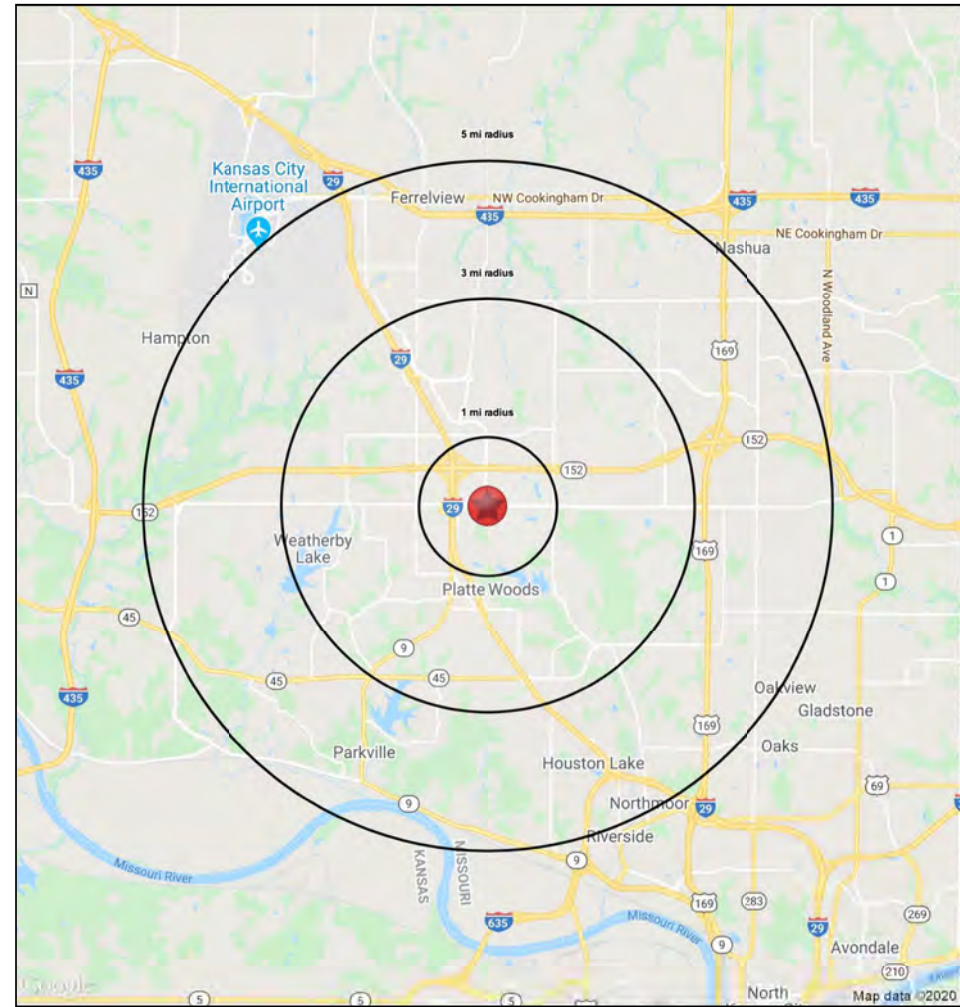
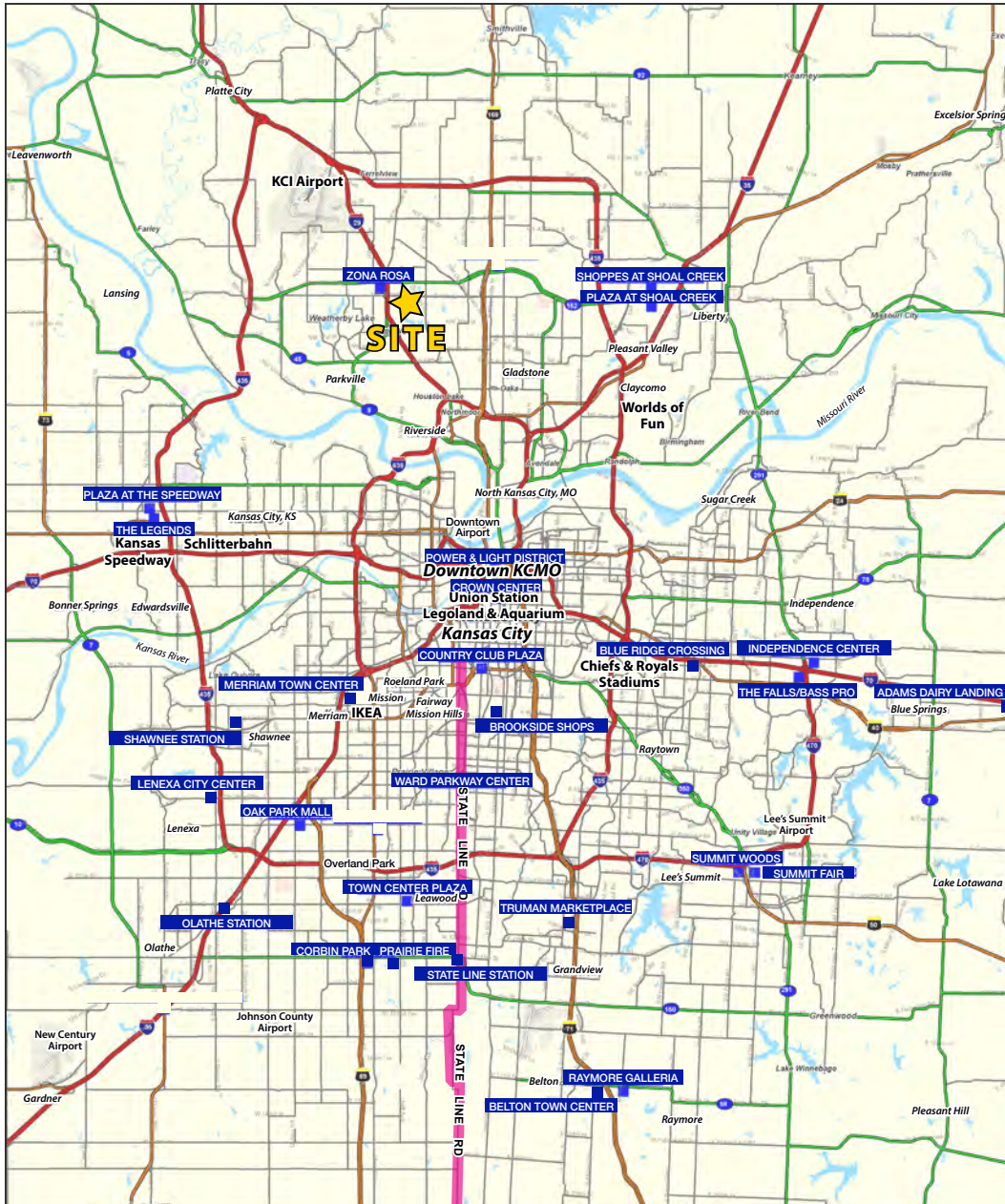




# PRIME RETAIL SPACE - BARRY ROAD

6001-6005 NW Barry Road, Kansas City, Missouri

4,096 SF  
SPACE  
FOR LEASE





# PRIME RETAIL SPACE - BARRY ROAD

6001-6005 NW Barry Road, Kansas City, Missouri

**4,096 SF  
SPACE  
FOR LEASE**

6001-6005 NW Barry Rd Kansas City, MO 64154	1 mi radius	3 mi radius	5 mi radius
<b>Population</b>			
2022 Estimated Population	10,764	56,710	123,216
2027 Projected Population	11,357	60,656	133,275
2020 Census Population	10,418	54,760	119,419
2010 Census Population	9,630	45,284	100,997
Projected Annual Growth 2022 to 2027	1.1%	1.4%	1.6%
Historical Annual Growth 2010 to 2022	1.0%	2.1%	1.8%
2022 Median Age	36.9	37.9	37.5
<b>Households</b>			
2022 Estimated Households	4,655	23,968	50,663
2027 Projected Households	5,053	26,346	56,231
2020 Census Households	4,484	23,104	48,802
2010 Census Households	4,244	19,438	41,689
Projected Annual Growth 2022 to 2027	1.7%	2.0%	2.2%
Historical Annual Growth 2010 to 2022	0.8%	1.9%	1.8%
<b>Race and Ethnicity</b>			
2022 Estimated White	73.5%	76.9%	77.0%
2022 Estimated Black or African American	12.8%	10.7%	10.5%
2022 Estimated Asian or Pacific Islander	4.9%	4.3%	4.1%
2022 Estimated American Indian or Native Alaskan	0.4%	0.3%	0.4%
2022 Estimated Other Races	8.5%	7.8%	8.1%
2022 Estimated Hispanic	8.8%	7.7%	7.9%
<b>Income</b>			
2022 Estimated Average Household Income	\$95,904	\$92,443	\$90,252
2022 Estimated Median Household Income	\$81,886	\$87,217	\$81,748
2022 Estimated Per Capita Income	\$41,527	\$39,117	\$37,162
<b>Education (Age 25+)</b>			
2022 Estimated Elementary (Grade Level 0 to 8)	0.6%	1.1%	1.5%
2022 Estimated Some High School (Grade Level 9 to 11)	2.3%	2.4%	3.1%
2022 Estimated High School Graduate	16.3%	18.8%	22.5%
2022 Estimated Some College	22.9%	21.6%	22.3%
2022 Estimated Associates Degree Only	9.5%	8.4%	8.4%
2022 Estimated Bachelors Degree Only	29.4%	29.1%	26.4%
2022 Estimated Graduate Degree	18.9%	18.6%	15.8%
<b>Business</b>			
2022 Estimated Total Businesses	627	1,610	3,532
2022 Estimated Total Employees	6,872	16,571	46,049
2022 Estimated Employee Population per Business	11.0	10.3	13.0
2022 Estimated Residential Population per Business	17.2	35.2	34.9

